

HALLIBURTON

**ARRAY COMPENSATED
RESISTIVITY**

SP ONLY IN TRACK ONE

1 IN = 100 FT MD

COMPANY	CROWN DRILLING INCORPORATED		
WELL	MERMENTAU MINERALS & LAND CO 13 #1		
FIELD	MERMENTAU		
PARISH	CAMERON		
STATE	LA		
Permanent Datum	GL		Elev. 1.0 ft
Log measured from	DF		13.0 ft above perm. Datum
Drilling measured from	DF		GL
			15.0 ft
			14.0 ft
			1.0 ft

Run No.	ONE		
Depth - Driller	8619.00 ft		
Depth - Logger	8594.0 ft		
Bottom - Logged Interval	8584.0 ft		
Top - Logged Interval	2526.0 ft		
Casing - Driller	9.625 in	@ 2524.0 ft	
Casing - Logger	2526.0 ft		
Bit Size	8.500 in		
Type Fluid in Hole	WBM		
Density	10.0 ppg	43.00 s/qt	
PH	9.50 pH	4.0 cp/m	
Source of Sample	FLOW LINE		
Rm @ Meas. Temperature	0.650 ohmm	@ 85.00 degF	@
Rmf @ Meas. Temperature	0.60 ohmm	@ 85.00 degF	@
Rmc @ Meas. Temperature	0.687 ohmm	@ 85.00 degF	@
Source Rmf	MEASURED	MEASURED	
Rm @ BHT	0.31 ohmm	@ 183.0 degF	@
Time Since Circulation	10.6 hr		
Time on Bottom	10-Oct-11 18:07		
Max. Rec. Temperature	183.0 degF	@ 8594.0 ft	@
Equipment	10959019	NEW IBERIA	
Recorded By	J. NICHOLSON		
Witnessed By	HERBERT ANTIE		

Service Ticket No.: 8535317 API Serial No.: 17023230860000 PGM Version: WL INSITE R3.4.2 (Build 2)

CHANGE IN MUD TYPE OR ADDITIONAL SAMPLE				RESISTIVITY SCALE CHANGES				
Date	Sample No.			Type Log	Depth	Scale Up Hole	Scale Down Hole	
Depth-Driller								
Type Fluid in Hole								
Density	Viscosity							
Ph	Fluid Loss							
Source of Sample				RESISTIVITY EQUIPMENT DATA				
Rm @ Meas. Temp		@	@	Run No.	Tool Type & No.	Pad Type	Tool Pos.	Other
Rmf @ Meas. Temp.		@	@	ONE	ACRT	N/A	1.5" S.O.	N/A
Rmc @ Meas. Temp.		@	@		10982661			
Source Rmf	Rmc	MEAS	MEAS		10976085			
Rm @ BHT		0.31 ohmm @ 183 deg F	@					
Rmf @ BHT		0.29 ohmm @ 183 deg F	@					
Rmc @ BHT		0.33 ohmm @ 183 deg F	@					

EQUIPMENT DATA							
GAMMA		ACOUSTIC		DENSITY		NEUTRON	
Run No.	ONE	Run No.		Run No.	ONE	Run No.	ONE
Serial No.	10964330	Serial No.		Serial No.	11012605	Serial No.	11277439
Model No.	GTET	Model No.		Model No.	SDLT	Model No.	DSNT
Diameter	3.625"	No. of Cent.		Diameter	4.5"	Diameter	3.625"
Detector Model No.	T-102A	Spacing		Log Type	GAM -GAM	Log Type	NEU -NEU
Type	SCINT			Source Type	Cs 137	Source Type	Am241Be
Length	8"	LSA [Y/N]		Serial No.	20790B	Serial No.	DSN - 412
Distance to Source	N/A	FWDA [Y/N]		Strength	1.5 Ci	Strength	15 Ci

LOGGING DATA

Run No.	GENERAL		Speed ft/min	GAMMA		ACOUSTIC		Matrix	DENSITY		NEUTRON			
	Depth			Scale		Scale			Matrix		Scale			
	From	To		L	R	L	R		L	R	L	R		
ONE	8594	2526	REC	0	150				60.0 %	0.0 %	2.65 g/cc	60.0 %	0.0 %	SAND

DIRECTIONAL INFORMATION

Maximum Deviation	20.60 deg	@	7998.00 ft	KOP	@	3800.00 ft
-------------------	-----------	---	------------	-----	---	------------

Remarks: GTET-DSNT-SDLT-ACRT RAN IN COMBINATION
LOG TIED INTO DIRECTIONAL SURVEY DATED OCTOBER 9, 2011
ANNULAR HOLE VOLUME CALCULATED FOR 5.5 IN PRODUCTION CASING
MAX TEMP: 183 deg F, 183 deg F, 182 deg F
CHLORIDES: (CaCl) 3300 mg/L

RIG: CROWN #2
CREW: D. VARNADO, C. THOMAS, D. SIMON
THANK YOU FOR CHOOSING HALLIBURTON ENERGY SERVICES -- NEW IBERIA, LA -- 337.367.9261

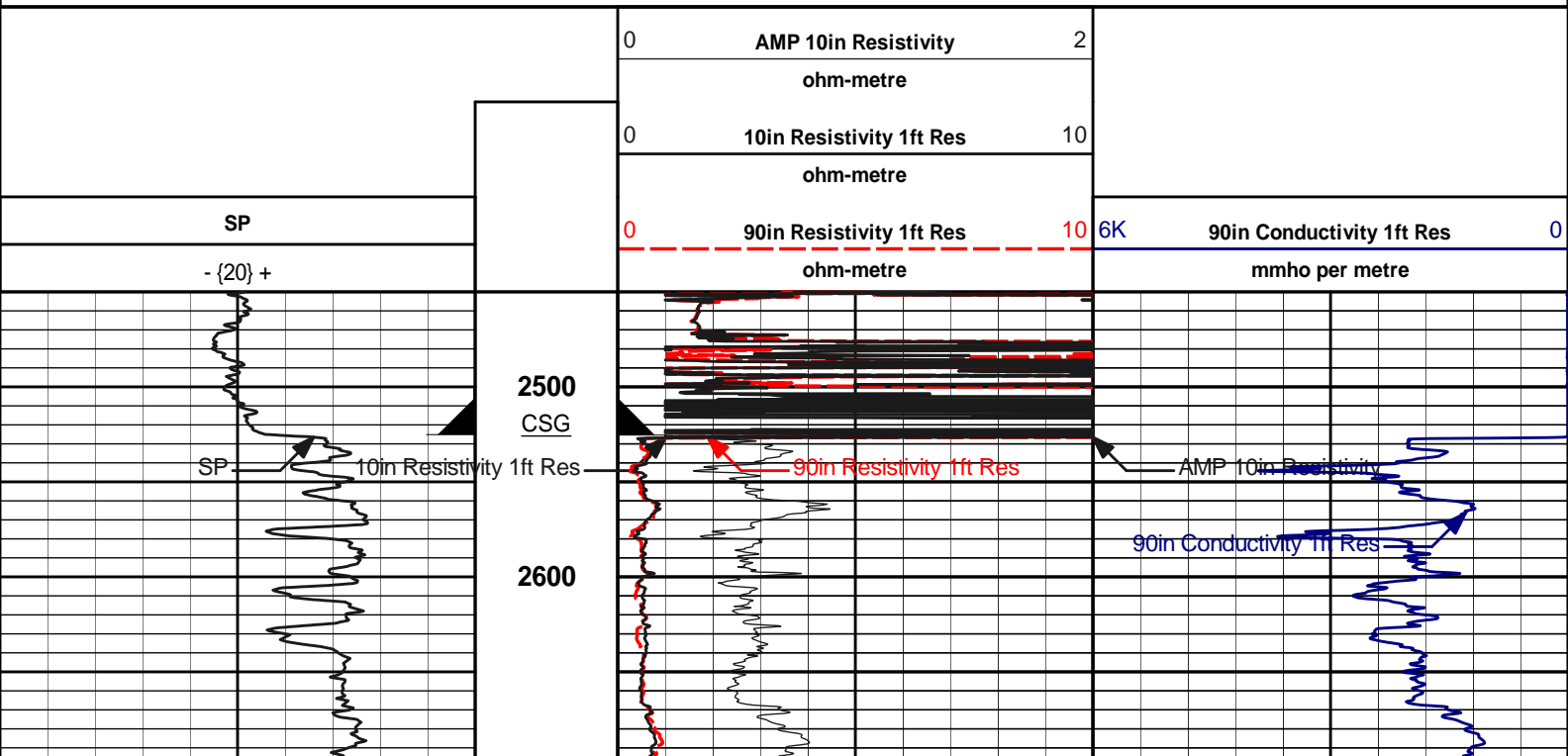
HALLIBURTON DOES NOT GUARANTEE THE ACCURACY OF ANY INTERPRETATION OF THE LOG DATA, CONVERSION OF LOG DATA TO PHYSICAL ROCK PARAMETERS OR RECOMMENDATIONS WHICH MAY BE GIVEN BY HALLIBURTON PERSONNEL OR WHICH APPEAR ON THE LOG OR IN ANY OTHER FORM. ANY USER OF SUCH DATA, INTERPRETATIONS, CONVERSIONS, OR RECOMMENDATIONS AGREES THAT HALLIBURTON IS NOT RESPONSIBLE EXCEPT WHERE DUE TO GROSS NEGLIGENCE OR WILLFUL MISCONDUCT, FOR ANY LOSS, DAMAGES, OR EXPENSES RESULTING FROM THE USE THEREOF.

HALLIBURTON



Plot Time: 10-Oct-11 21:24:23
Plot Range: 2450 ft to 8617.75 ft
Data: 10_10_CROWNWell Based\DAQ-0001-003\
Plot File: \\1IN_MD_NO_GR\1IN_MD_NO_GR

1 IN = 100 FT MD
MAIN PASS
NO GAMMA RAY



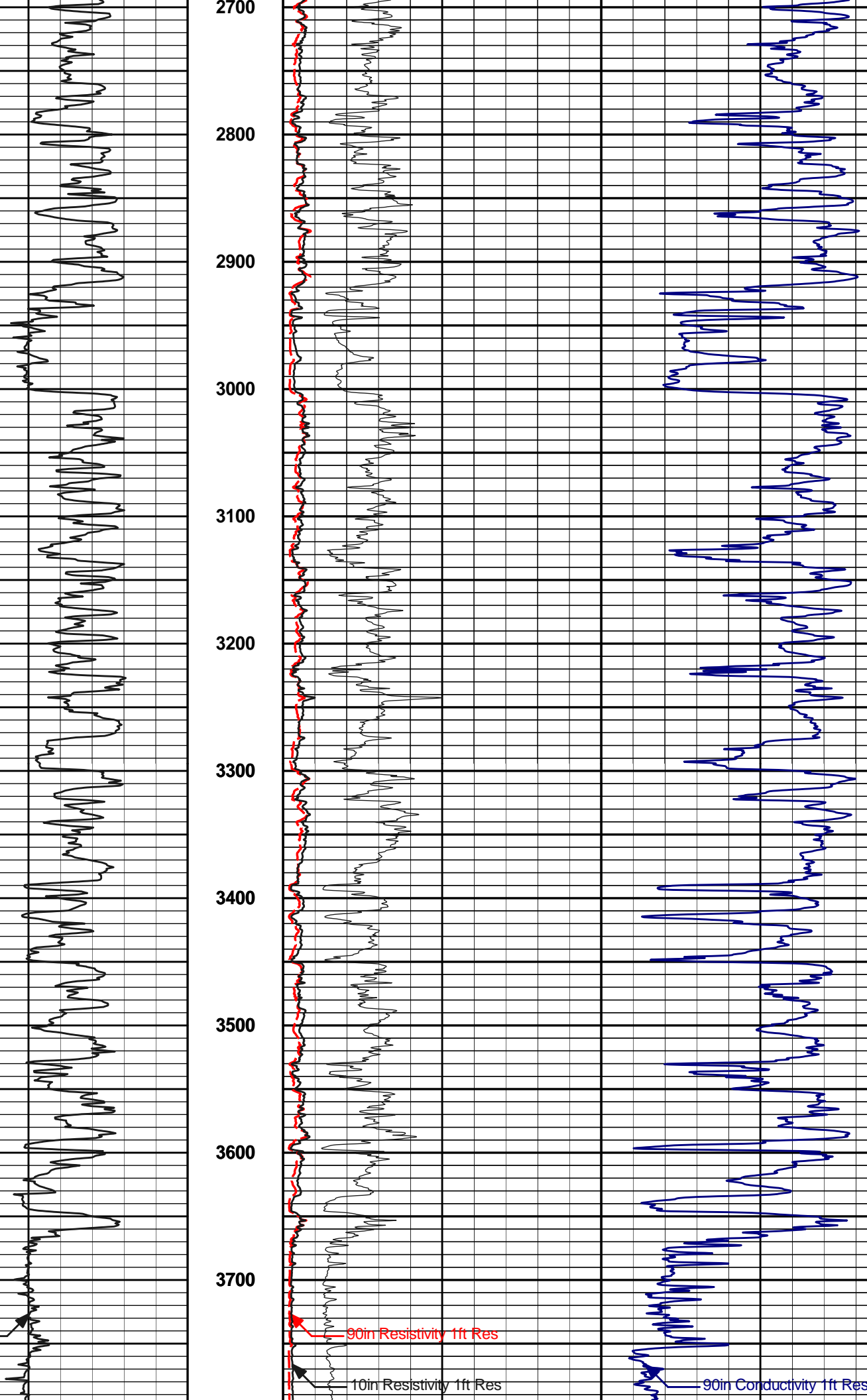
SP

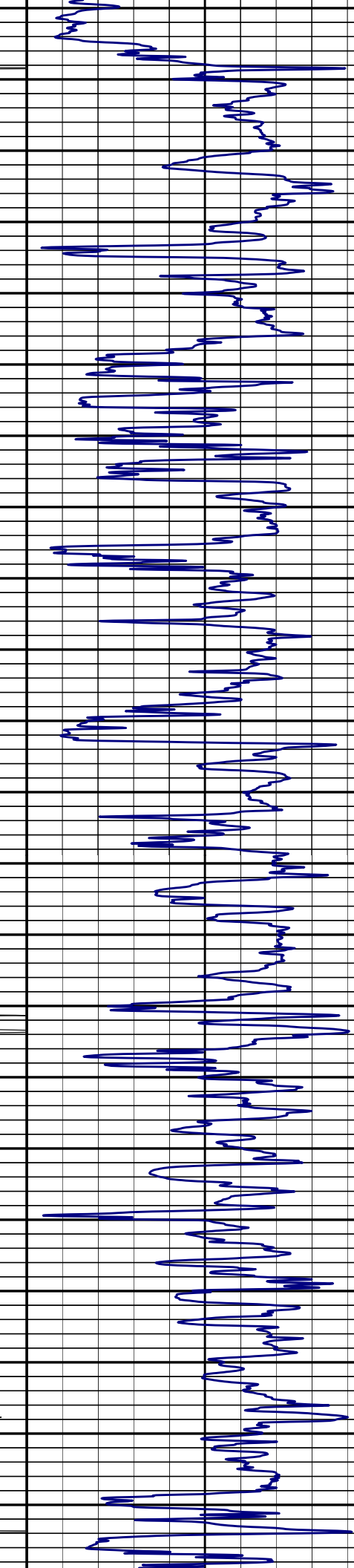
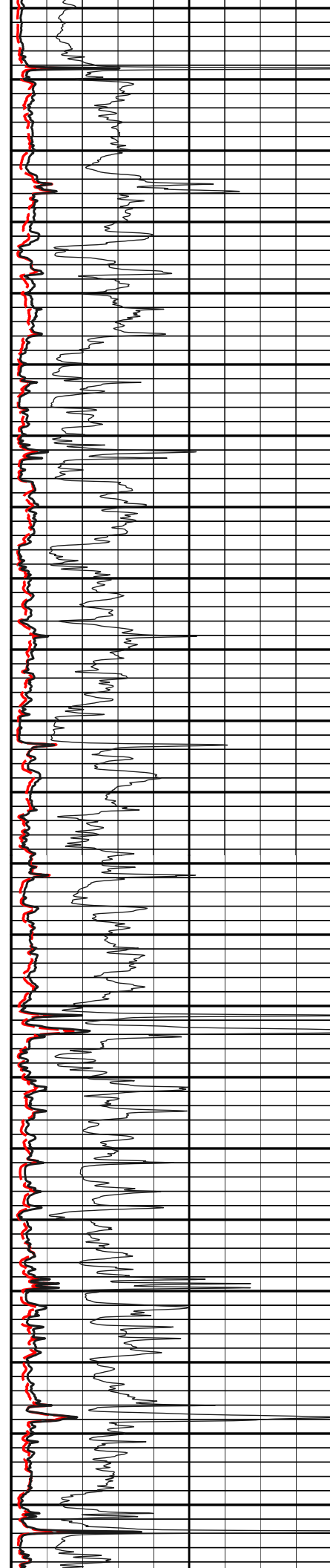
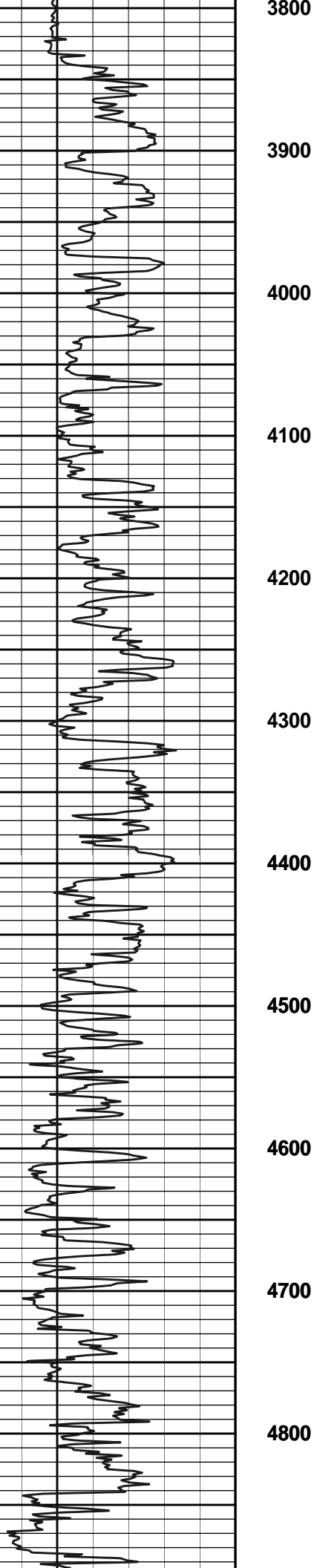
2700
2800
2900
3000
3100
3200
3300
3400
3500
3600
3700

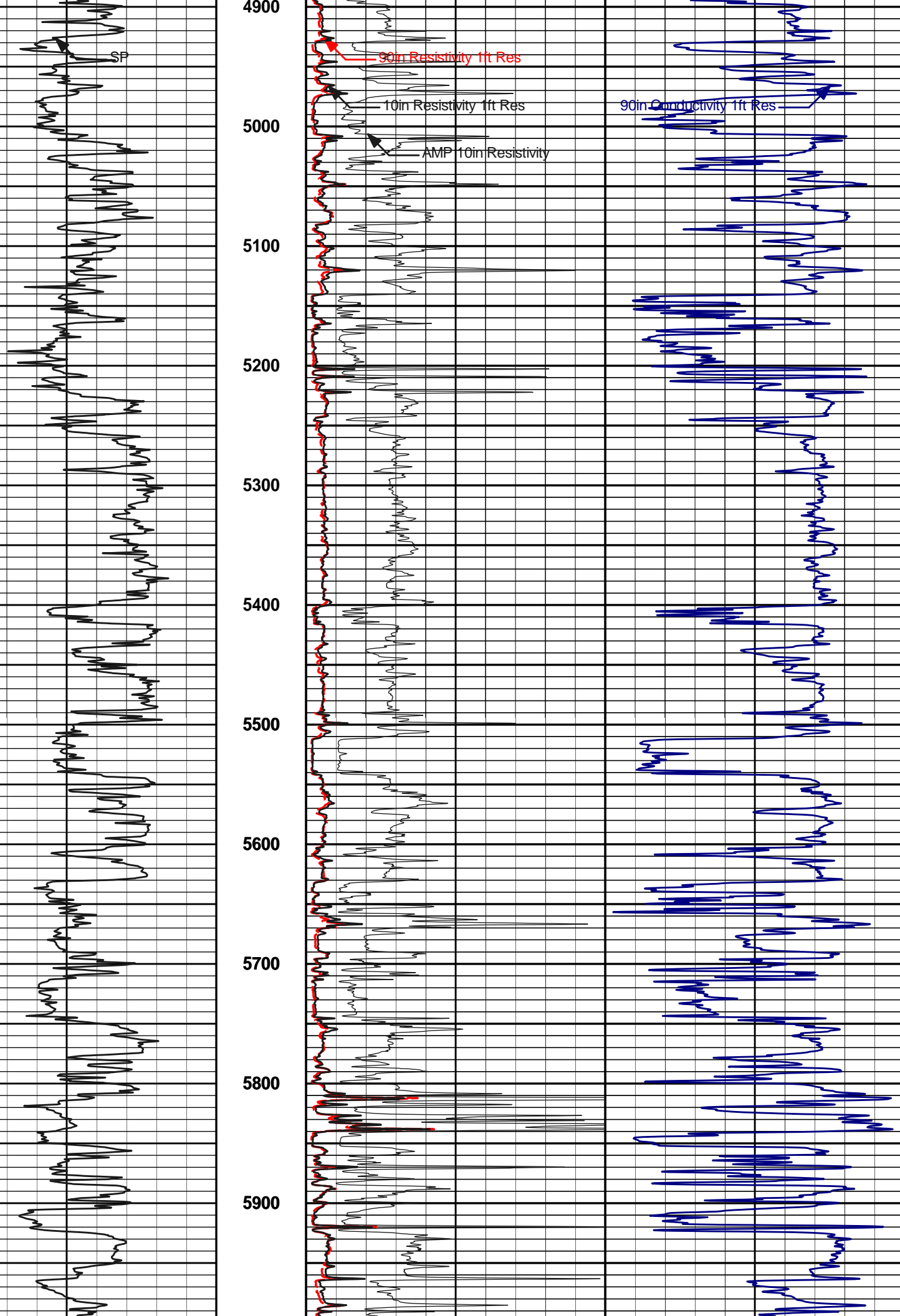
90in Resistivity 1ft Res

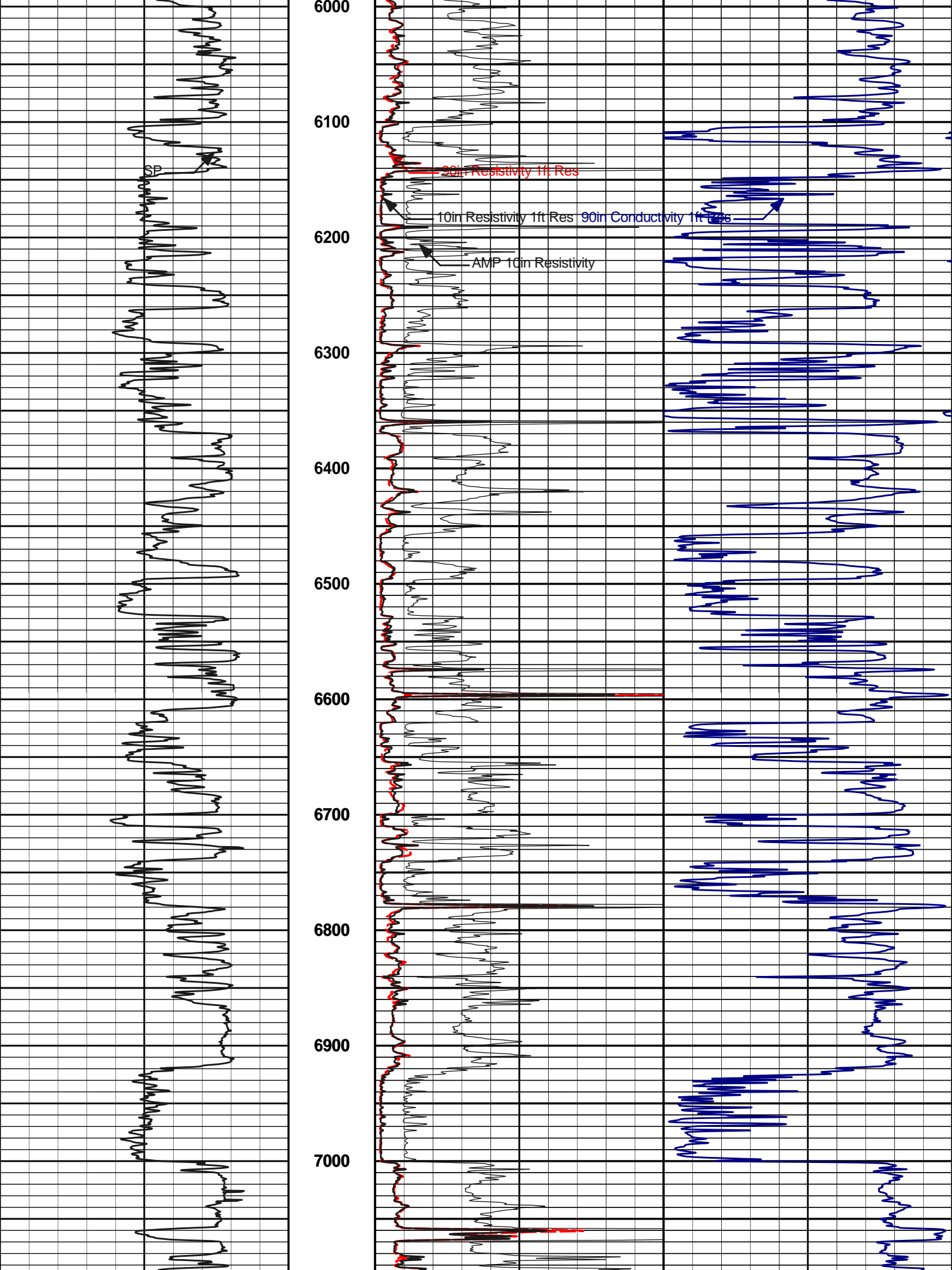
10in Resistivity 1ft Res

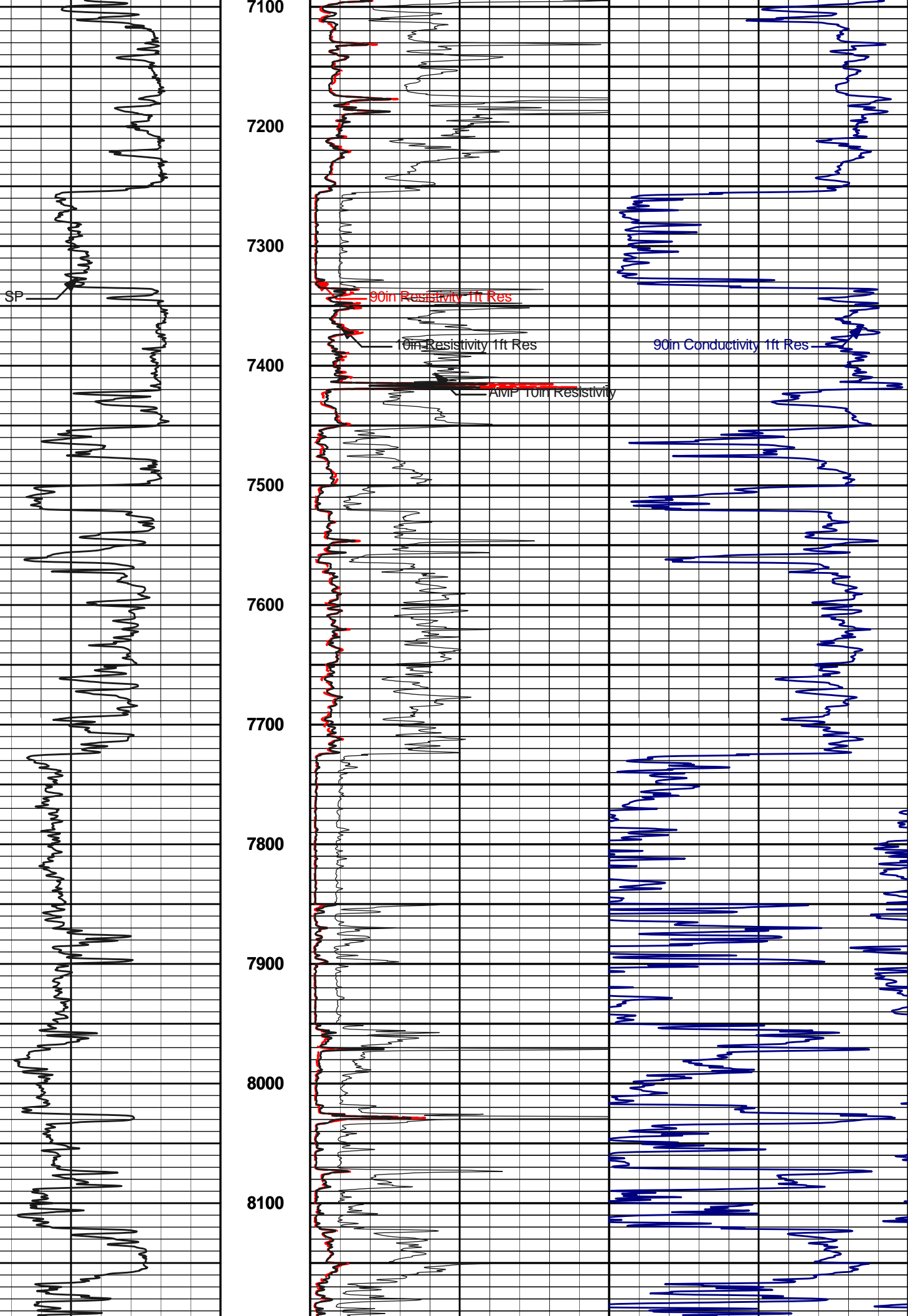
90in Conductivity 1ft Res

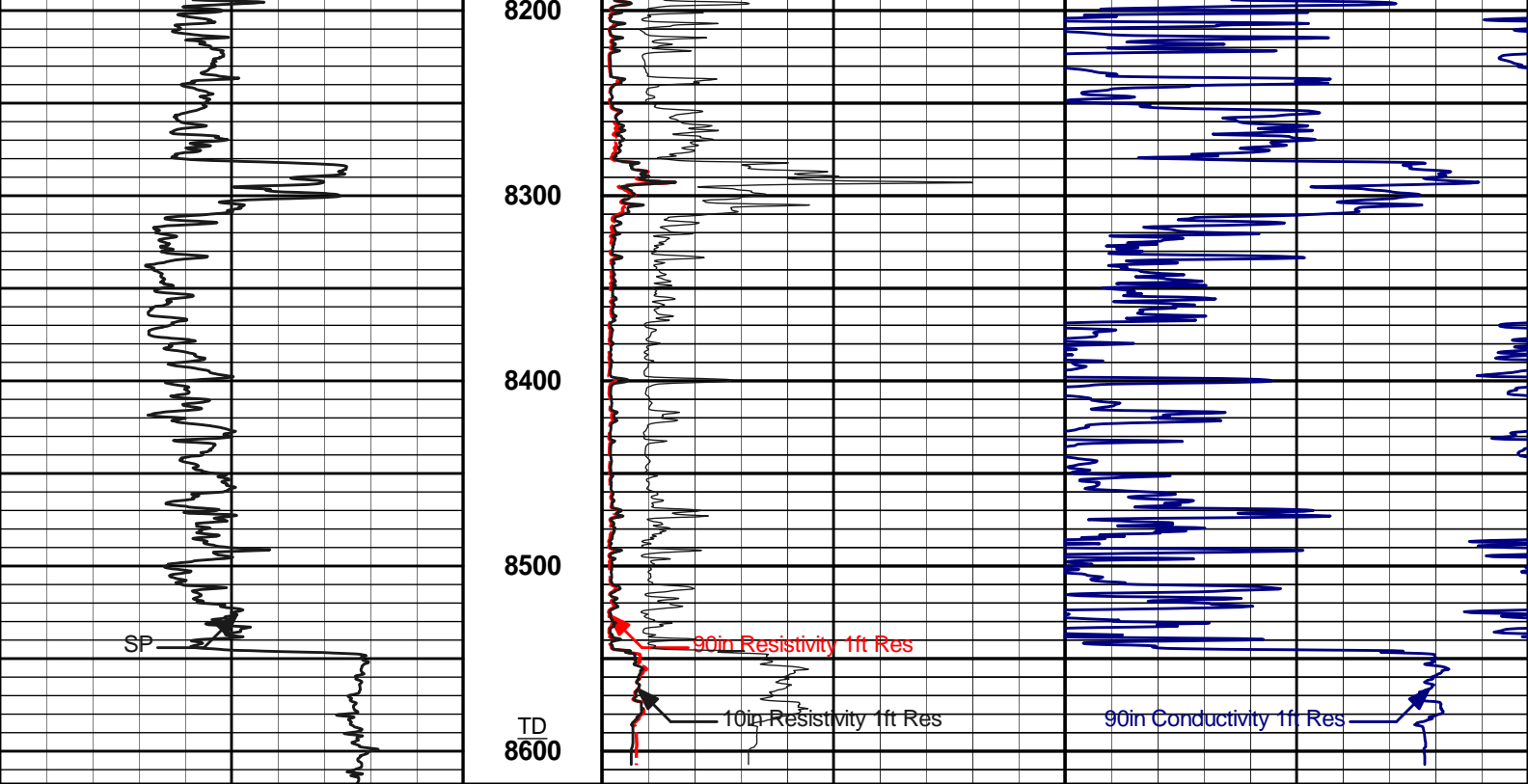












SP	0	90in Resistivity 1ft Res	10	6K	90in Conductivity 1ft Res	0
- {20} +	ohm-metre		mmho per metre			
	0	10in Resistivity 1ft Res	10			
	ohm-metre					
	0	AMP 10in Resistivity	2			
	ohm-metre					

HALLIBURTON Plot Time: 10-Oct-11 21:24:34
 Plot Range: 2450 ft to 8617.75 ft
 Data: 10_10_CROWNWell Based\DAQ-0001-003\
 Plot File: \\1IN_MD_NO_GR\1IN_MD_NO_GR

1 IN = 100 FT MD
 MAIN PASS
 NO GAMMA RAY

COMPANY	CROWN DRILLING INCORPORATED		
WELL	MERMENTAU MINERALS & LAND CO 13 #1		
FIELD	MERMENTAU		
PARISH	CAMERON	STATE	LA

HALLIBURTON ARRAY COMPENSATED RESISTIVITY
 SP ONLY IN TRACK ONE
 1 IN = 100 FT MD