

Smith Production Company
 N. R. Broussard Landing, Inc. No. 1
 Abbeville Field
 Bayou Kenny Brookshire Prospect
 Vermilion Parish, Louisiana
 Section 068, T12S-R03E

Victor P. Smith Oil Company

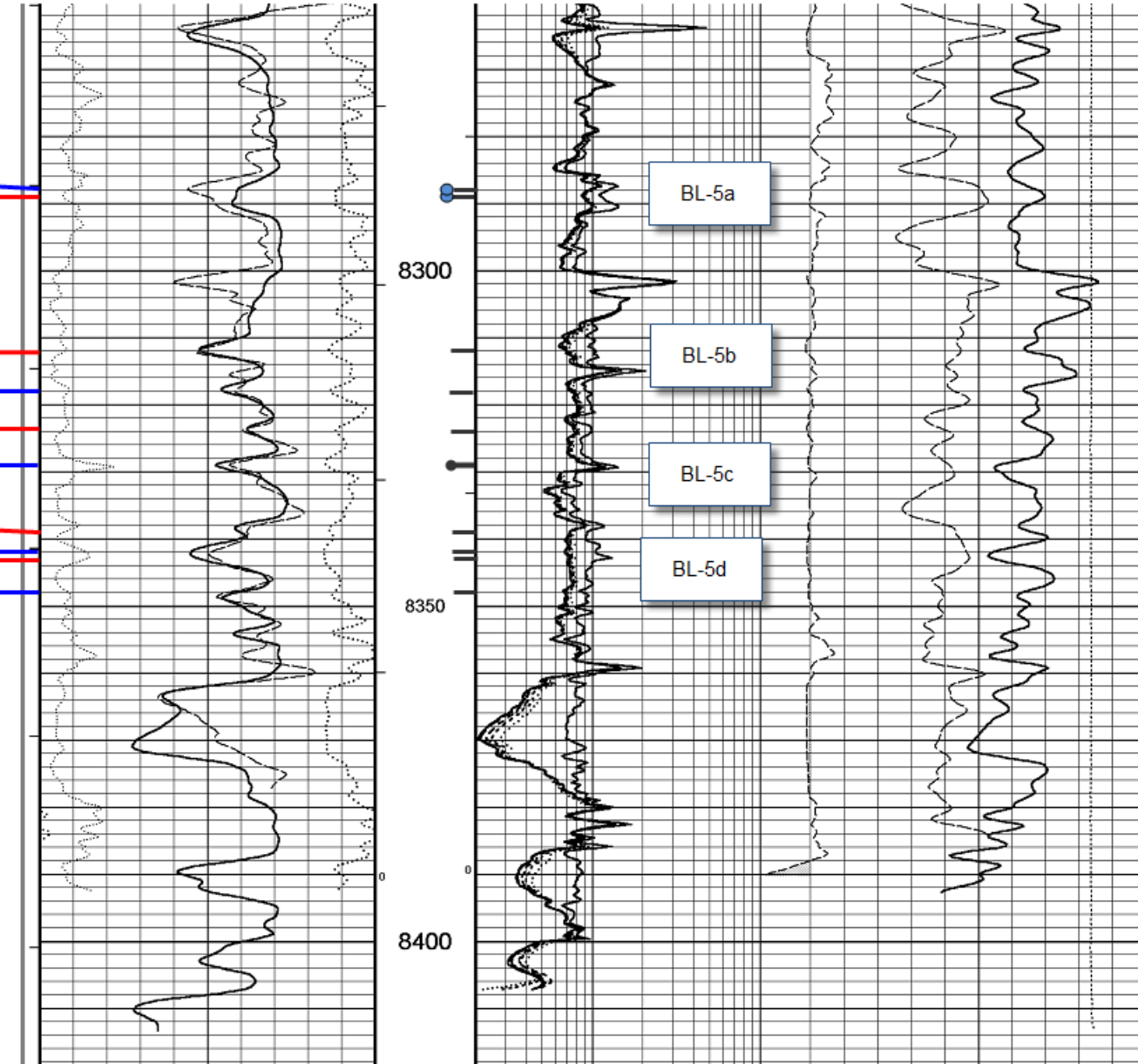
Broussard Landing #1

Core Display by: David Broadbridge

FILE NO.: LL-52953
 ANALYST: L. Simon
 TECH: A. Broussard
 DATE: July 9, 2011
 CORES: Weatherford
 API No.: 17113224310000

In. Rec.	Sample Depth Feet	Permeability mD	Porosity %	Pore Volume Saturation		Prob Prod	Bulk Volume Saturation		Comb. Gas	Crit. Water %	QA Factor	Core Lithology
				Oil %	Water %		Oil %	Gas %				
				0.3	8288.0		82.0	24.4				
0.3	8289.0	44.0	23.0	0.6	77.8	Wtr	0.1	5.0	0	58	2m	Sd vfg vslyt shy scalc vft flu
0.5	8312.0	2.4	15.4	0.0	87.5	(6)	0.0	1.9	0	65	2m	Sd vfg vslyt vshy lam scalc no flu
	8318.0											Lost
0.8	8324.0	4.9	16.3	0.0	81.4	(6)	0.0	3.0	0	63	1	Sd vf-fg slty vshy foss no flu
0.5	8329.0	13.0	21.0	4.0	67.2	Cond	0.8	6.0	20	66	1	Sd vfg slty vshy calc mott ft yl flu
1.0	8339.0	0.7	14.9	0.0	84.9	(6)	0.0	2.3	0	69	1	Sd vfg slty vshy calc no flu
	8342.0											Lost
	8343.0											Lost
0.5	8348.0	1.1	14.5	0.0	88.9	(6)	0.0	1.6	0	67	1	Sd vfg slty vshy lam no flu

In. Rec.	Sample Depth Feet	Permeability mD	Porosity %	Pore Volume Saturation		Prob Prod	Bulk Volume Saturation		Comb. Gas	Crit. Water %	QA Factor	Core Lithology
				Oil %	Water %		Oil %	Gas %				



Smith Production Company
 N. R. Broussard Landing, Inc. No. 1
 Abbeville Field
 Bayou Kenny Brookshire Prospect
 Vermilion Parish, Louisiana
 Section 068, T12S-R03E

Victor P. Smith Oil Company
Broussard Landing #1
 Core Display by: David Broadbridge

FILE NO.: LL-52953
 ANALYST: L. Simon
 TECH: A. Broussard
 DATE: July 9, 2011
 CORES: Weatherford
 API No.: 17113224310000

In. Rec.	Sample Depth Feet	Permeability mD	Porosity %	Pore Volume Saturation		Prob Prod	Bulk Volume Saturation		Comb. Gas	Crit. Water %	QA Factor	Core Lithology
				Oil %	Water %		Oil %	Gas %				
	7850.0											Lost
0.3	7851.0	750.0	28.2	2.2	72.5	Cond	0.6	7.1	16	35	2f	Sd vfg sslyt ssly ft yl flu
0.3	7852.0	720.0	27.7	2.9	74.8	Cond	0.8	6.2	8	36	2f	Sd vfg sslyt ssly ft yl flu
0.3	7853.0	785.0	28.3	4.0	72.1	Cond	1.1	6.8	20	35	2f	Sd vfg sslyt ssly ft yl flu
0.3	7854.0	1.5	15.6	0.0	84.4	(6)	0.0	2.4	0	67	2f	Sd vfg vslyt vsly no flu
0.5	7855.0	0.9	14.7	0.0	84.0	(6)	0.0	2.4	0	67	2f	Sd vfg vslyt vsly no flu
0.5	7856.0	6.9	17.4	3.8	76.9	(6)	0.7	3.3	15	64	1	Sd vfg slty vsly lam vft flu
	7860.0											Lost
	7861.0											Lost
	7862.0											Lost
0.3	7863.0	605.0	27.5	0.7	73.2	Cond	0.2	7.2	10	37	2fs	Sd vfg sslyt ssly ft yl flu
0.5	7865.0	590.0	26.9	3.6	74.5	Cond	1.0	5.9	30	36	2fs	Sd vfg sslyt ssly vft flu
0.5	7866.0	600.0	27.2	0.5	72.6	Cond	0.1	7.3	15	36	2fs	Sd vfg sslyt ssly vft flu
0.5	7867.0	535.0	27.0	3.7	67.0	Cond	1.0	7.9	27	38	2fs	Sd vfg sslyt ssly vft flu
0.3	7868.0	505.0	27.0	0.6	78.2	Cond	0.2	5.7	0	38	4fm	Sd vfg sslyt ssly ft yl flu
0.3	7870.0	650.0	27.9	9.0	63.8	Oil	2.5	7.6	45	36	3fm	Sd vfg sslyt ssly ft yl flu 39° API
0.3	7872.0	580.0	27.4	0.6	78.9	Wtr	0.2	5.6	19	36	4fm	Sd vfg sslyt ssly ft yl flu
0.3	7874.0	545.0	27.7	0.8	83.2	Wtr	0.2	4.4	0	39	3fm	Sd vfg slty ssly vft flu
0.5	7894.0	6.4	17.8	0.0	78.3	(6)	0.0	3.9	0	66	1	Sd vfg slty vsly lam no flu
0.5	7895.0	205.0	26.7	0.5	72.2	Cond	0.1	7.3	32	46	1	Sd vfg slty shy lam stks ft yl flu
0.5	7896.0	455.0	27.2	5.4	68.3	Cond	1.5	7.1	30	38	2f	Sd vfg slty ssly yl flu

