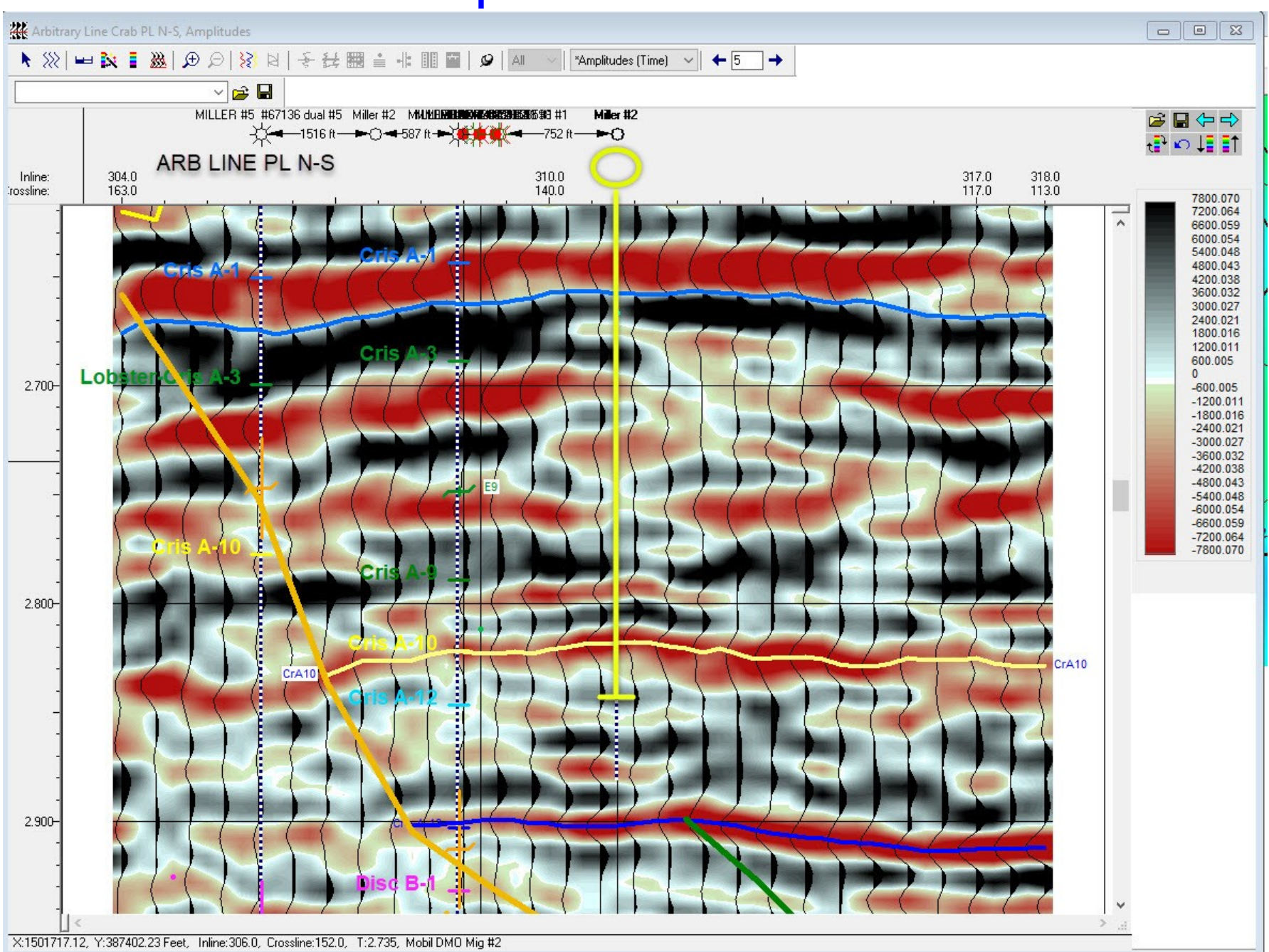
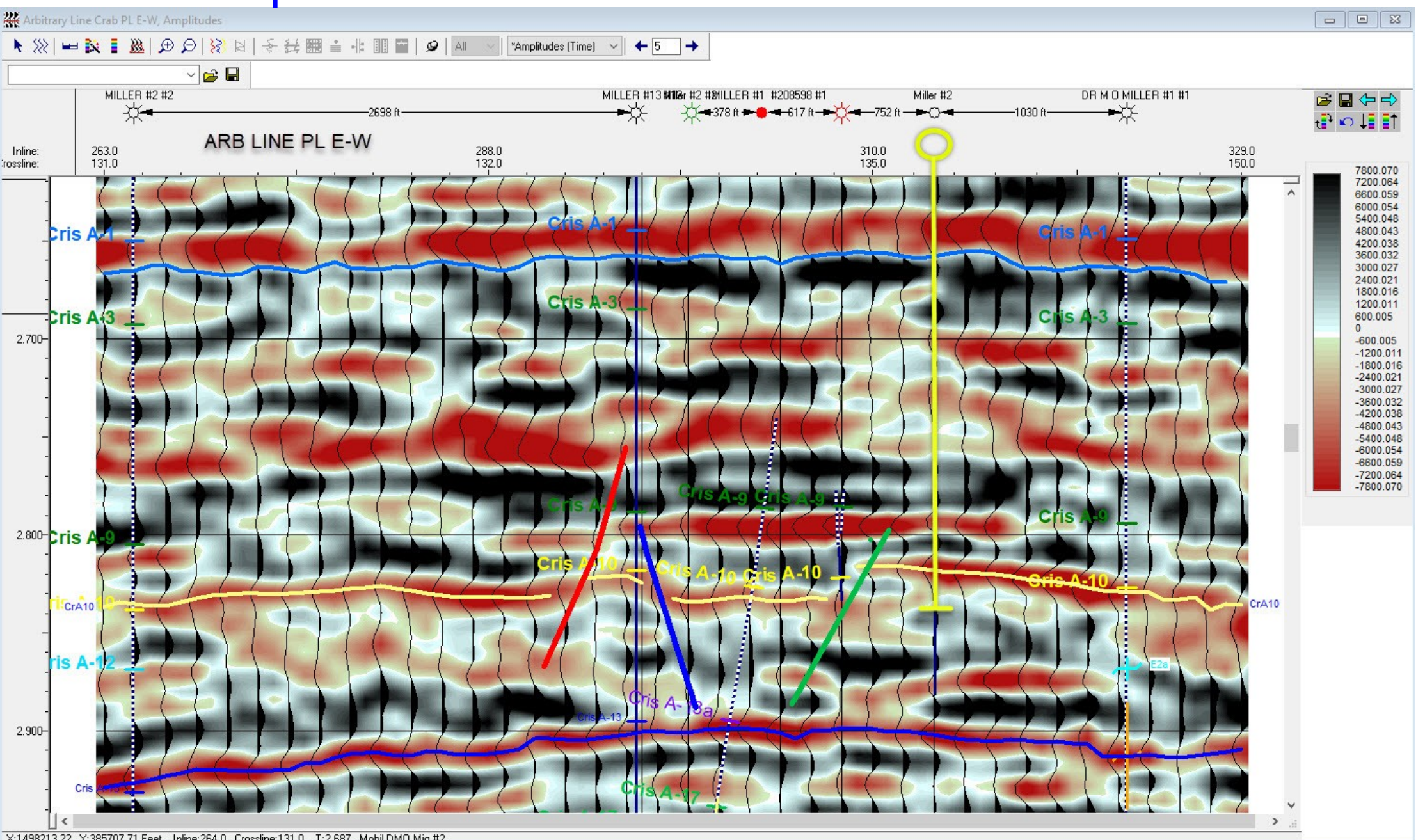
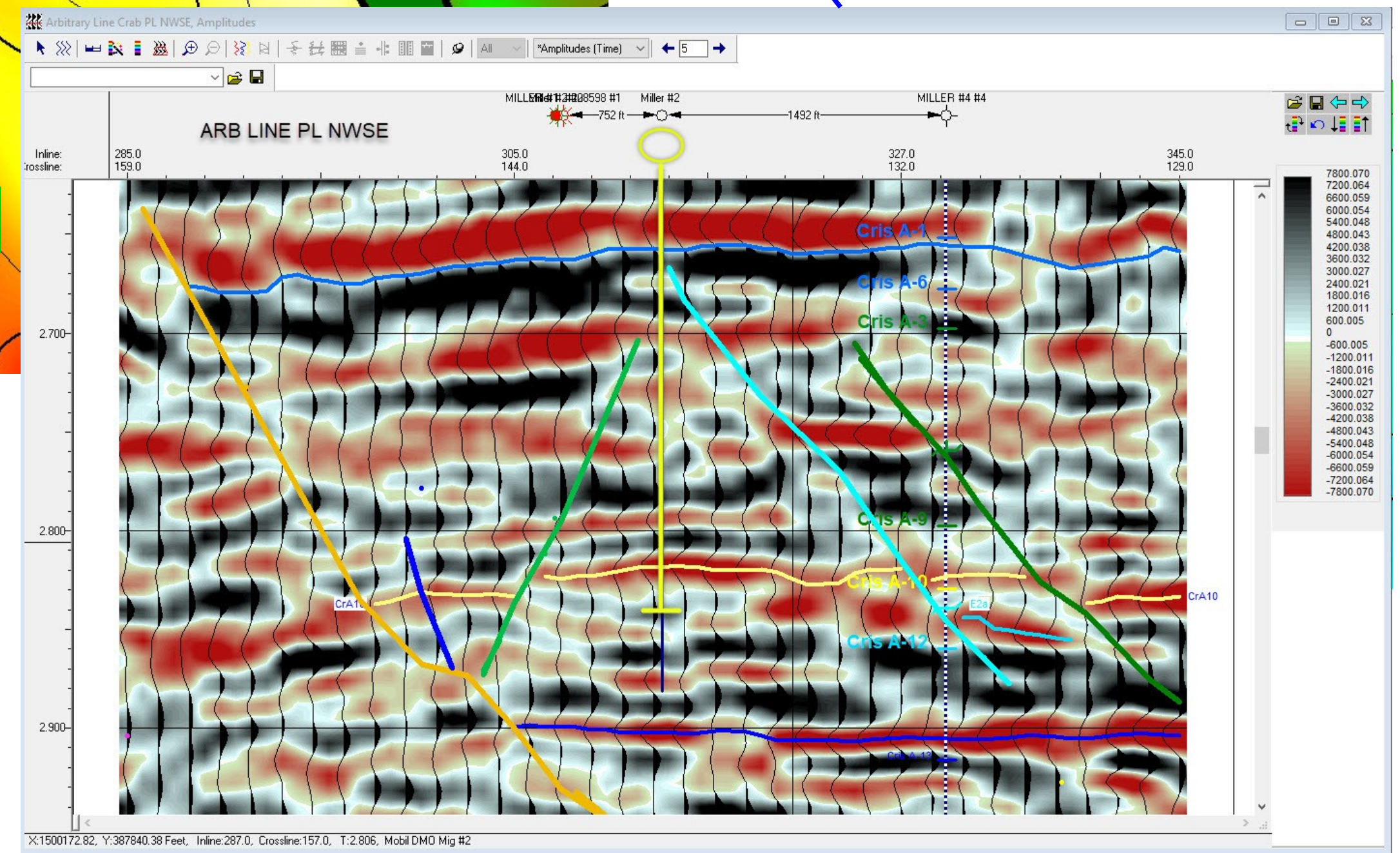
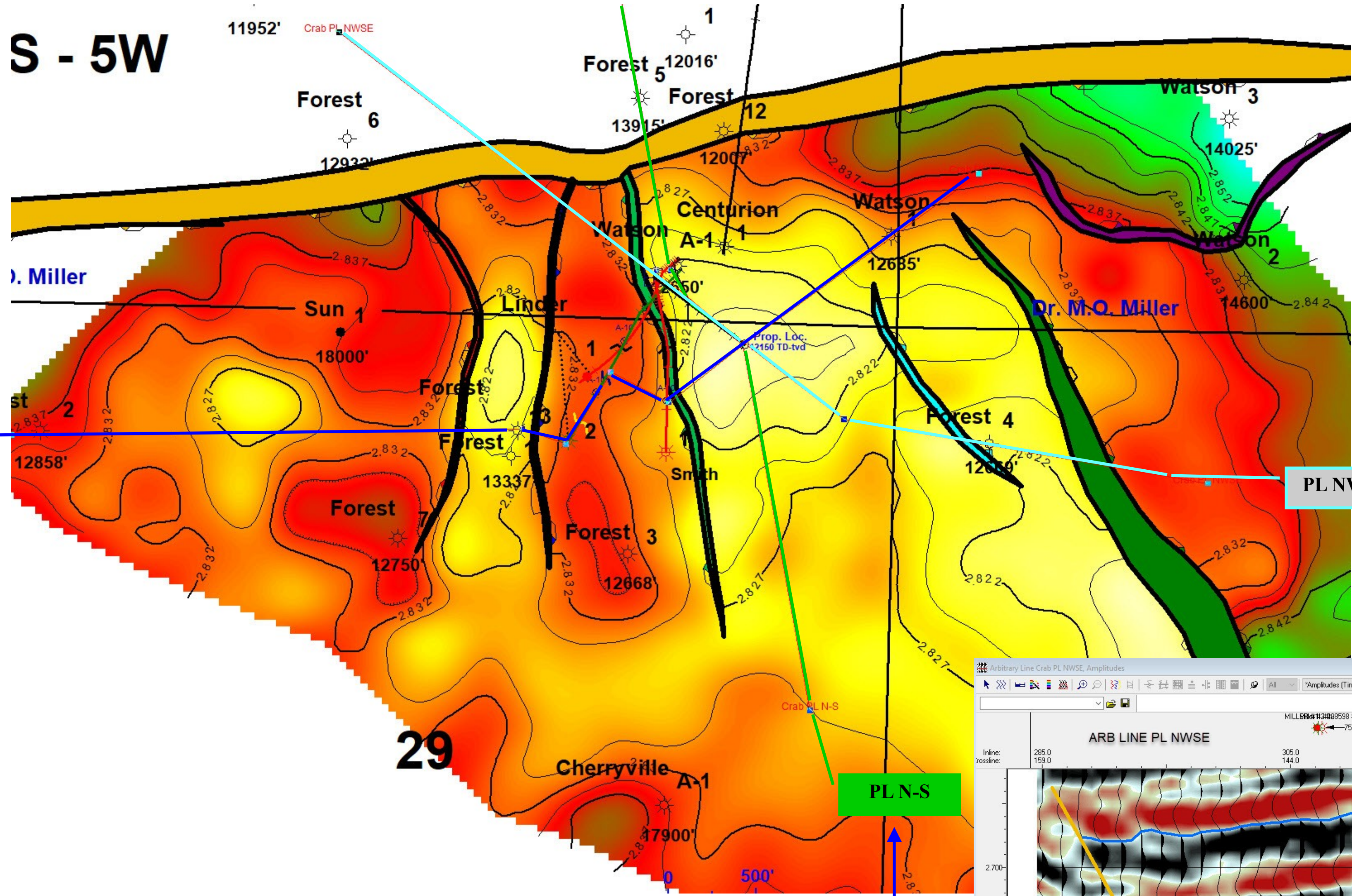


**BRIDGE EXPLORATION CO.**

Crab Lake Field  
Cameron Parish, LA

Cris A-10 and Cris A-12a  
structural relationships across  
trapping key fault

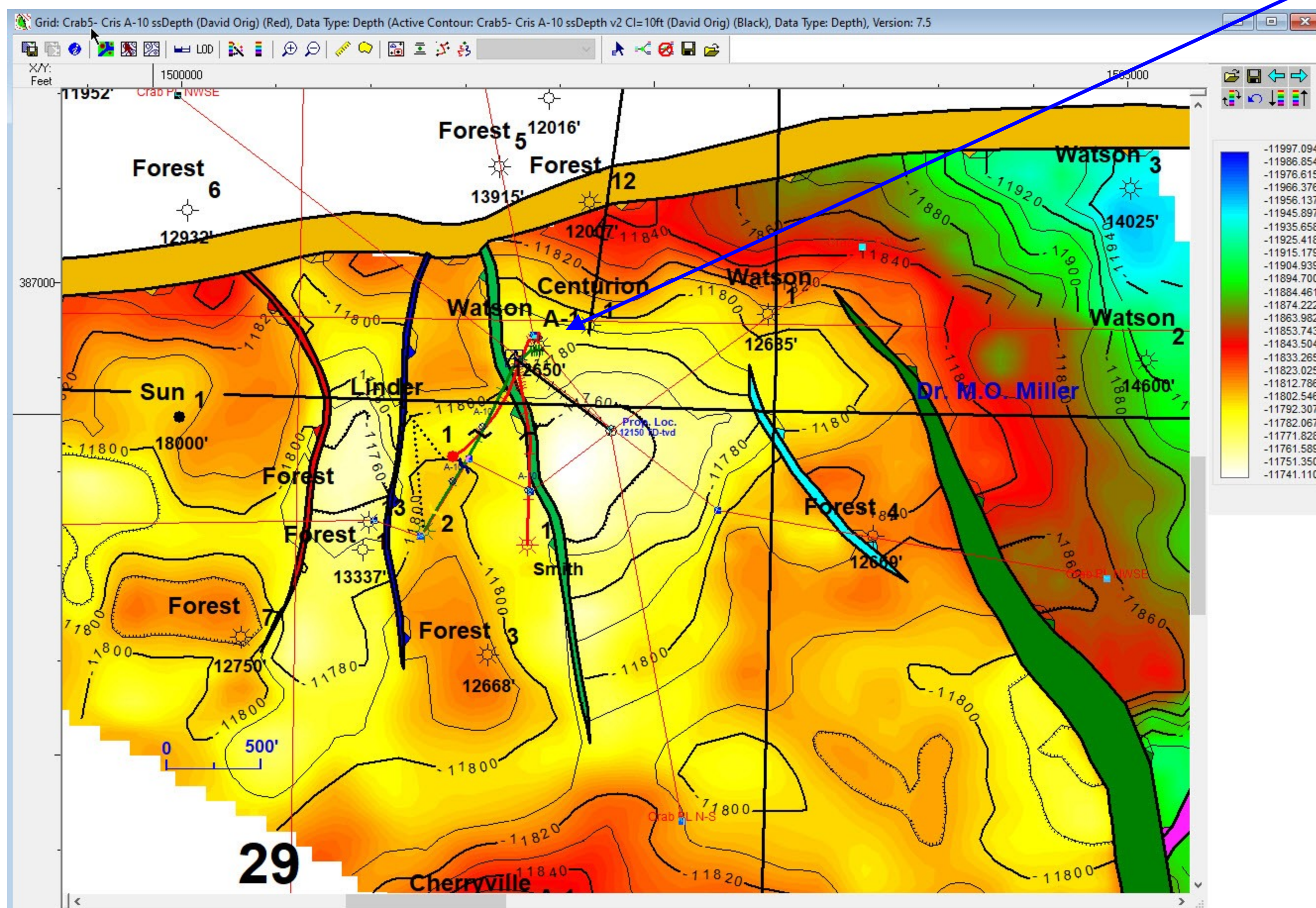
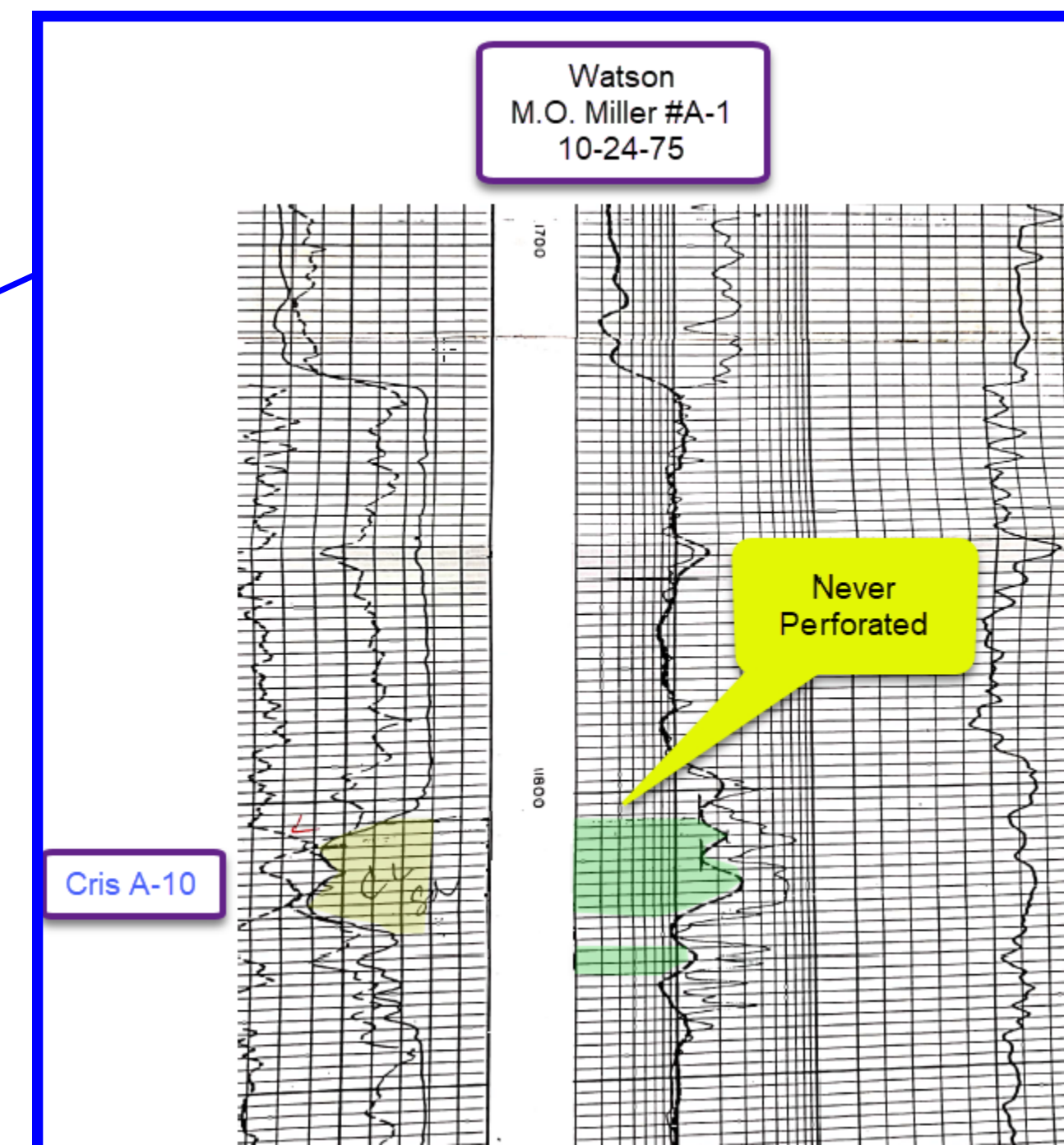
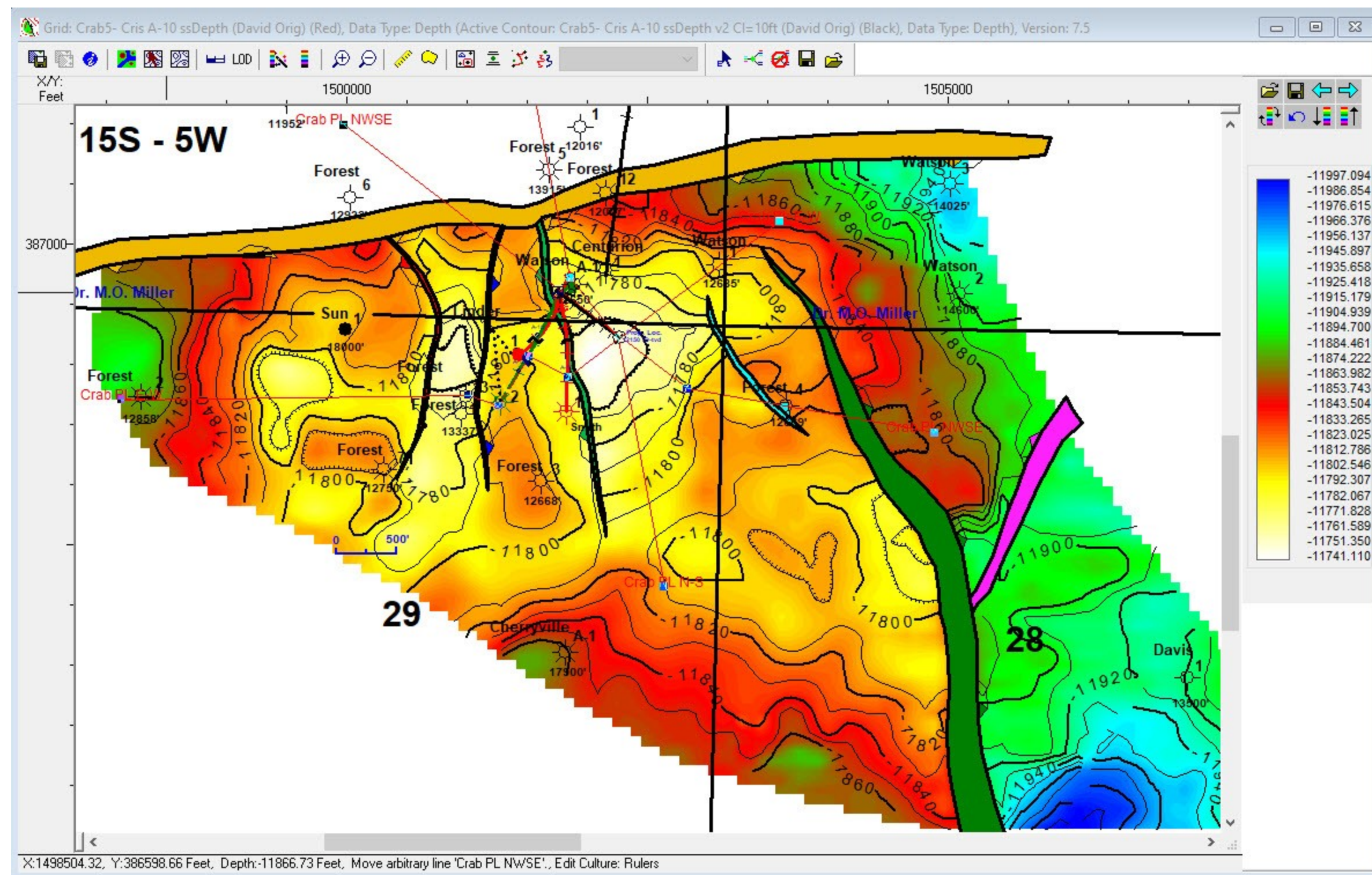
S - 5W



**BRIDGE EXPLORATION CO.**

Crab Lake Field  
Cameron Parish, LA

Cris A-10 Oil Sand  
TIME MAP & ARB LINES

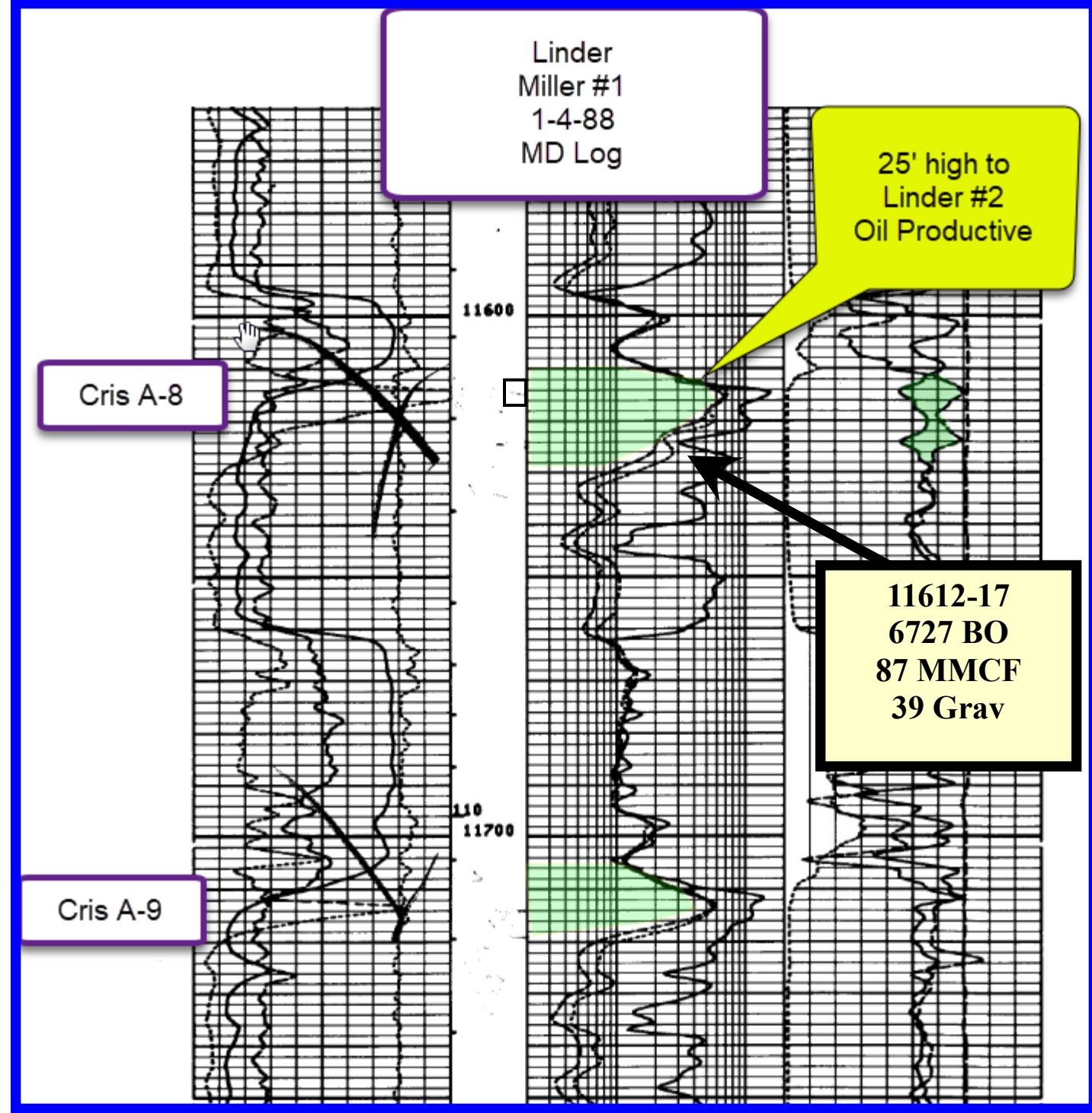


**BRIDGE EXPLORATION CO.**

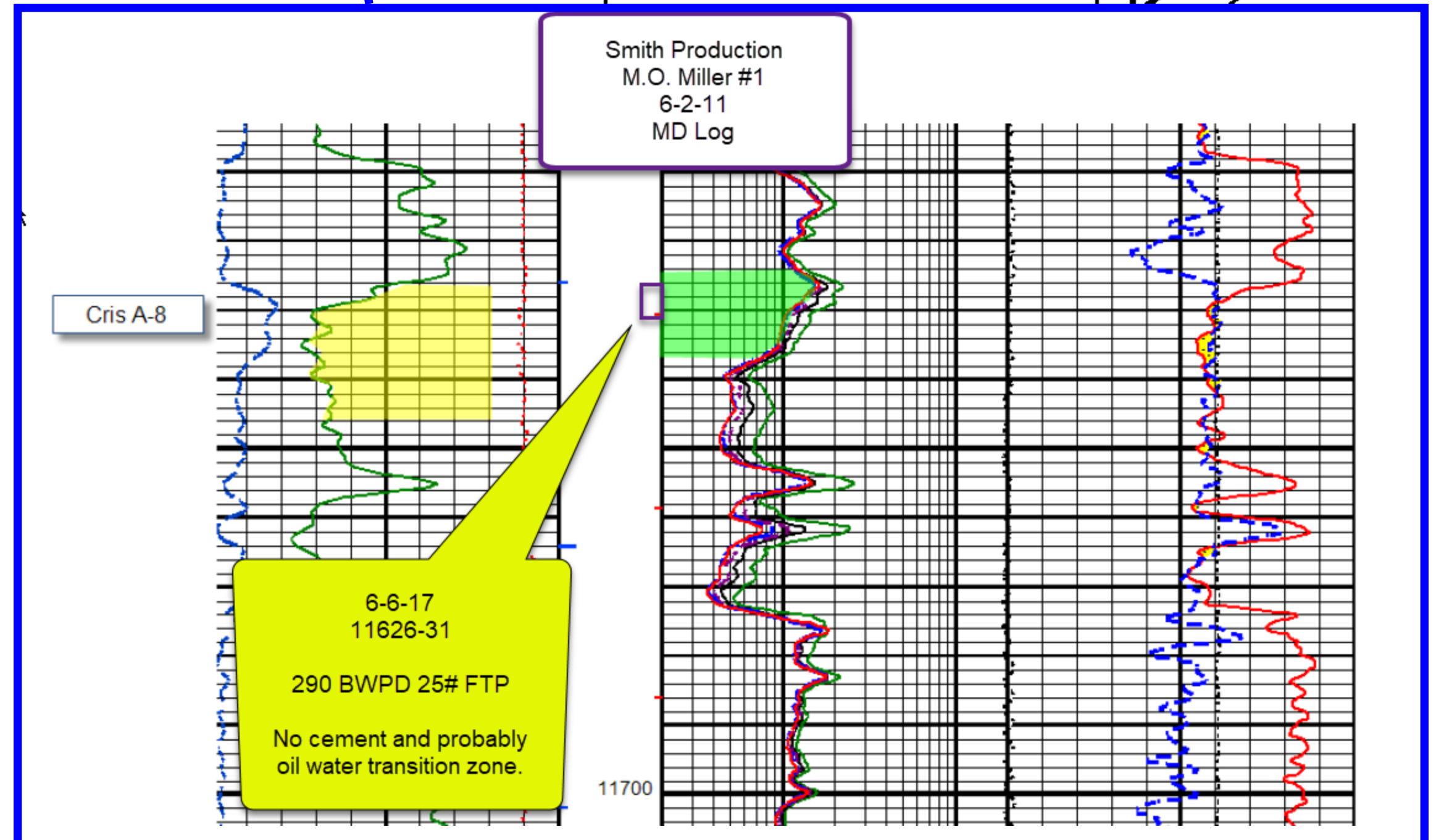
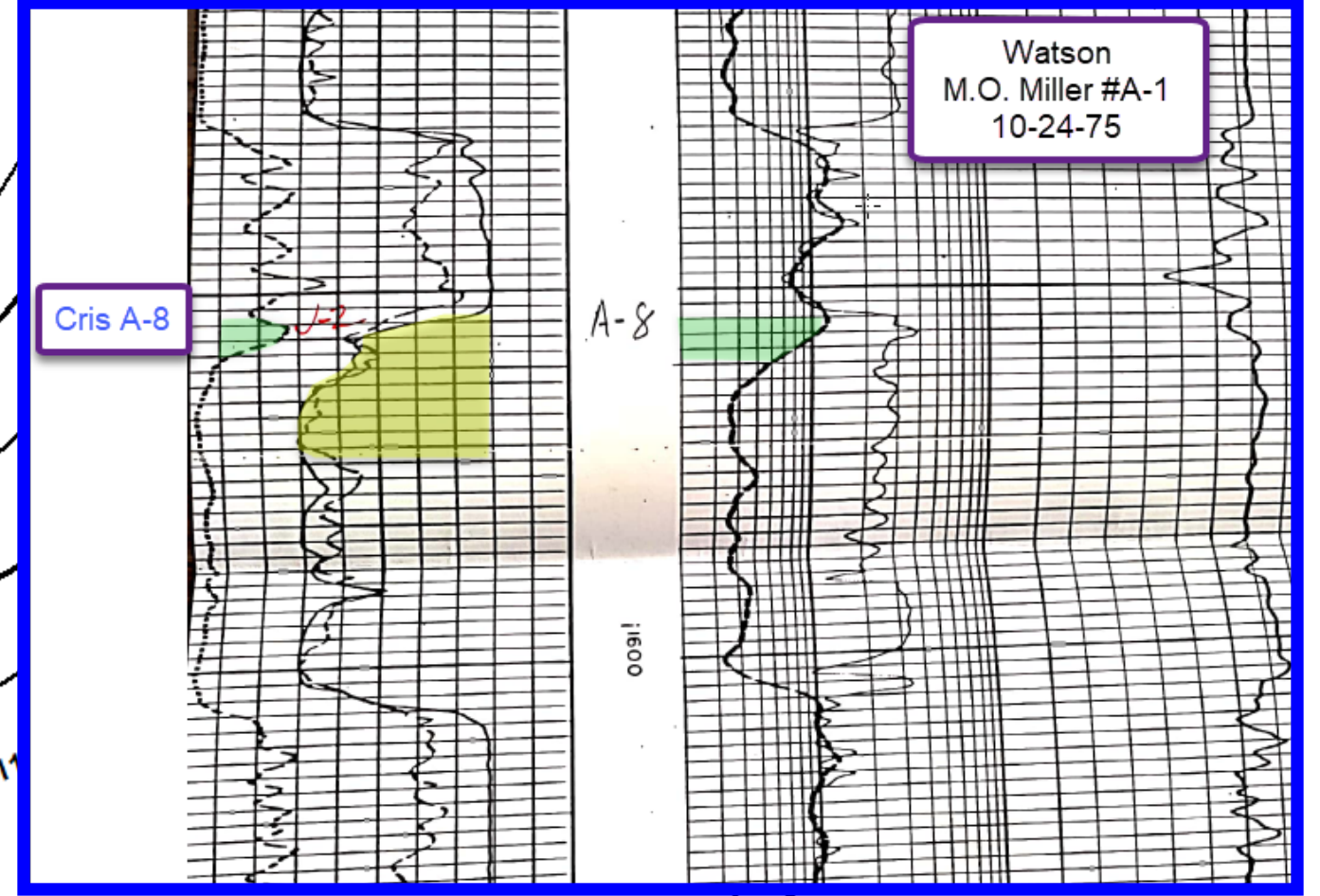
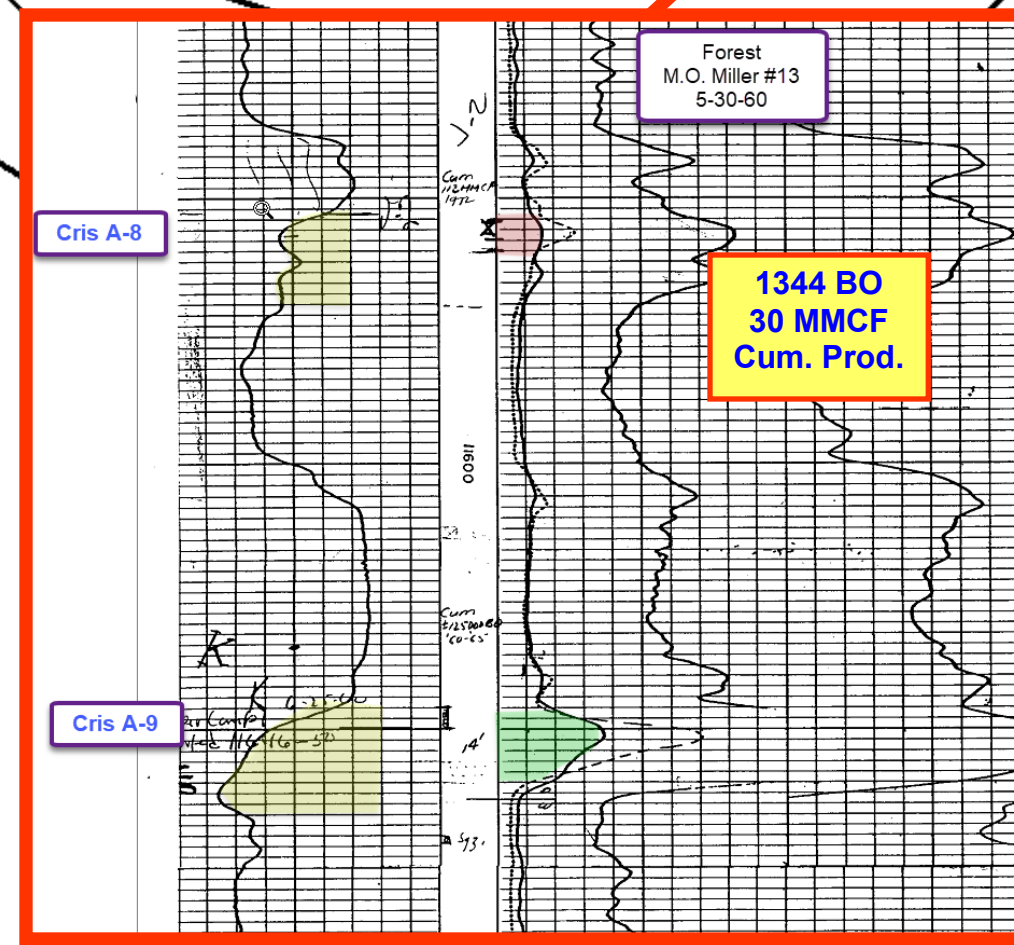
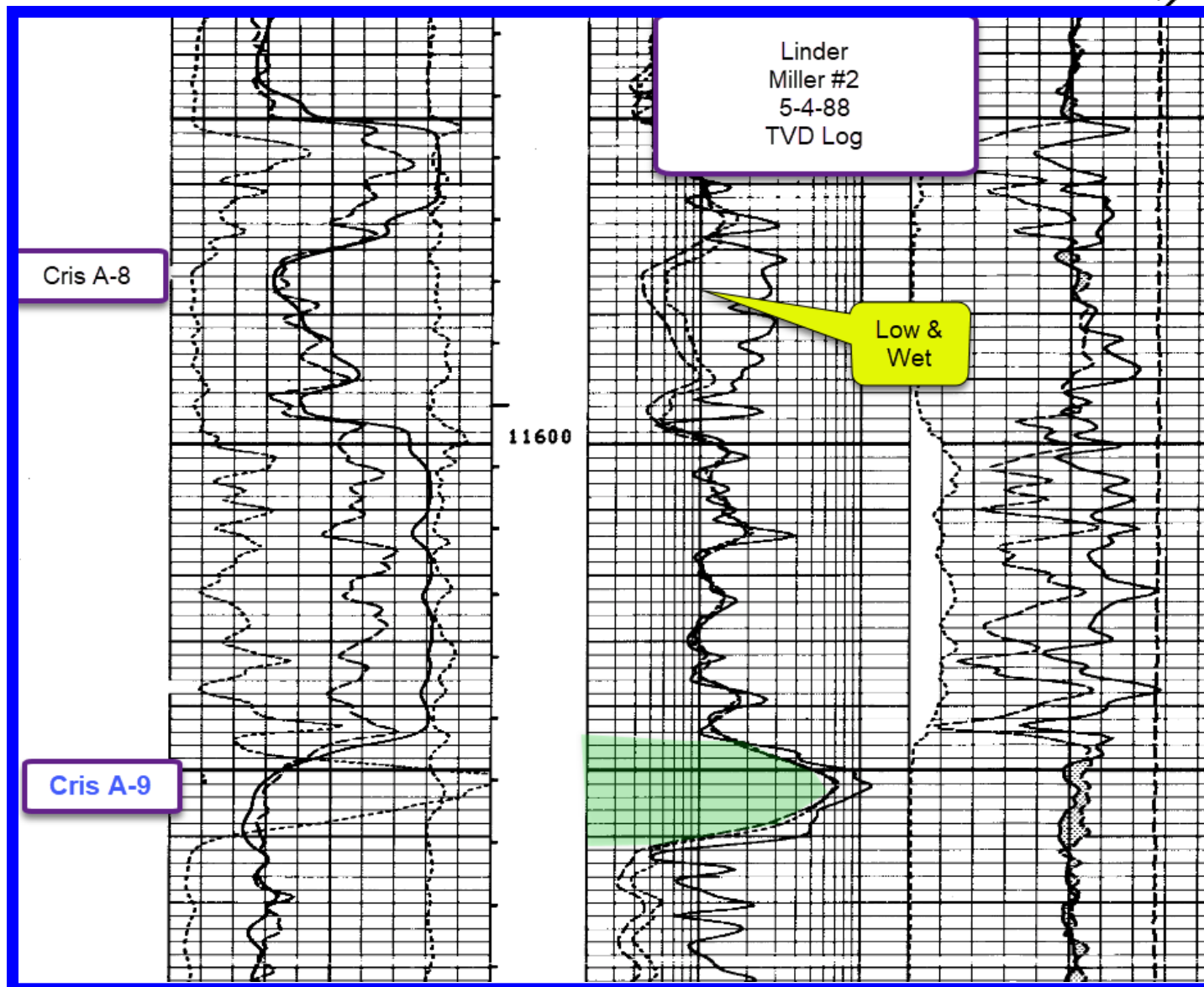
Crab Lake Field  
Cameron Parish, LA

Cris A-10 Oil Sand  
TIME DEPTH MAP  
C.I. = 10'





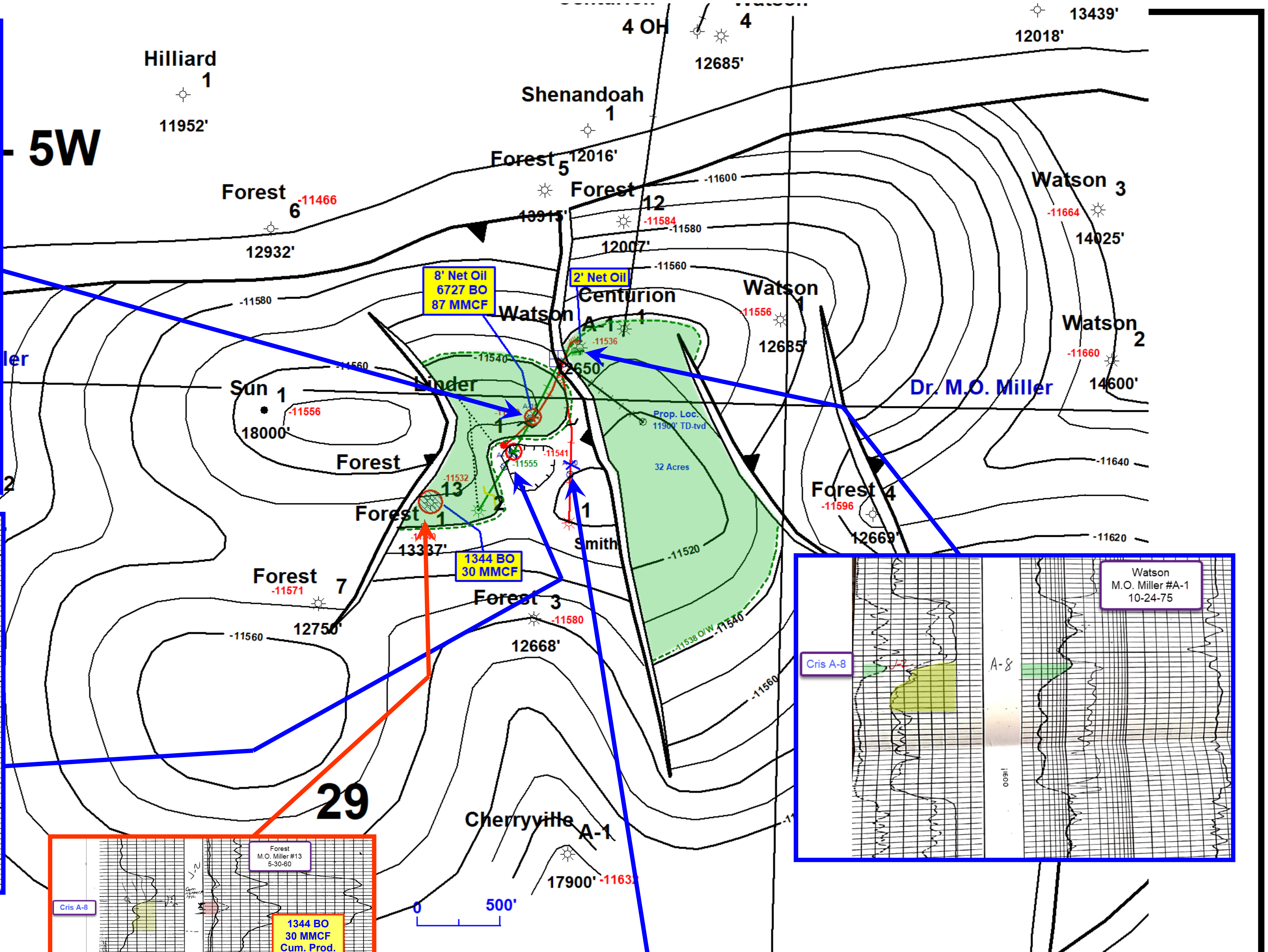
11612-17  
6727 BO  
87 MMCF  
39 Grav



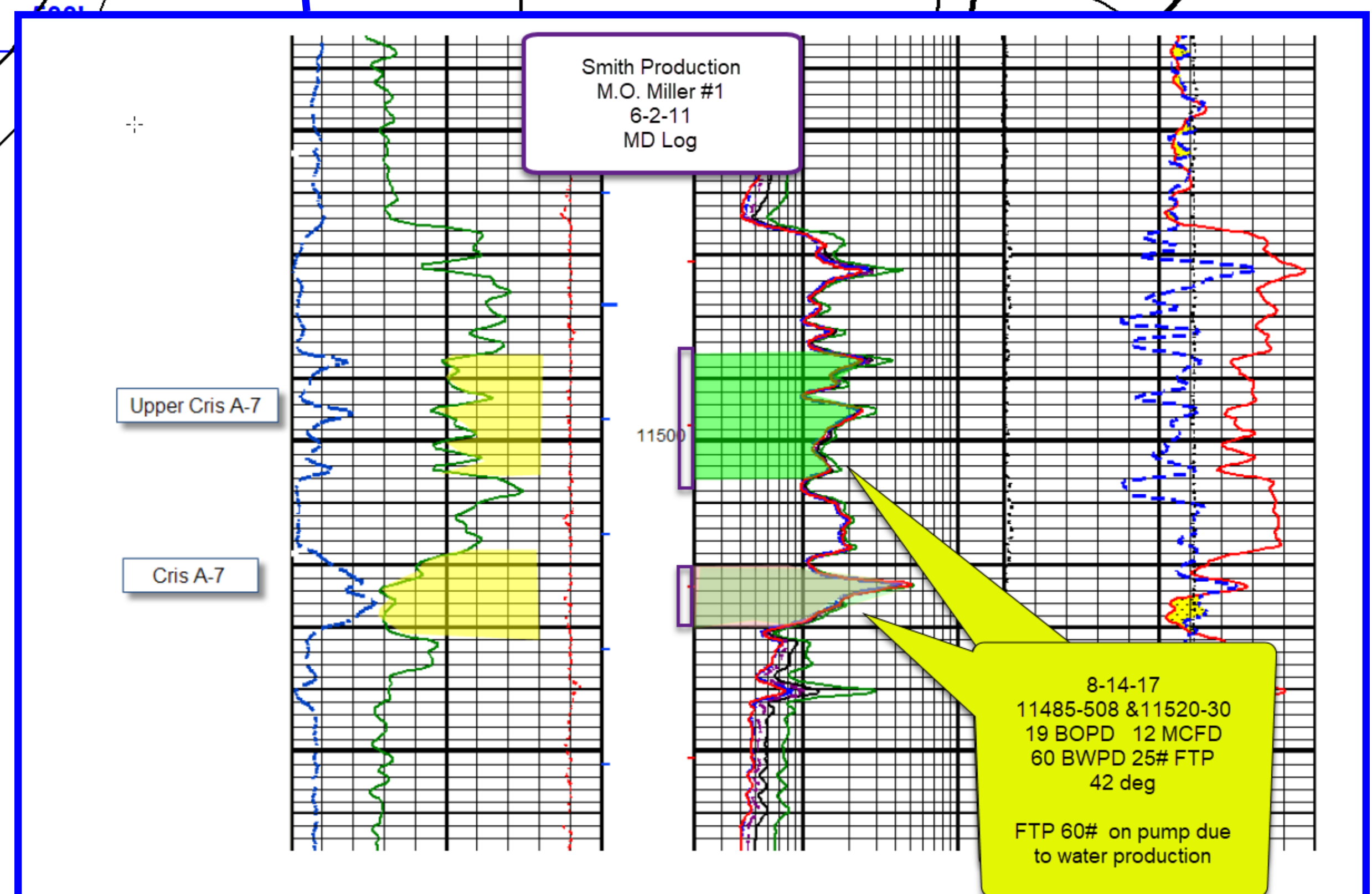
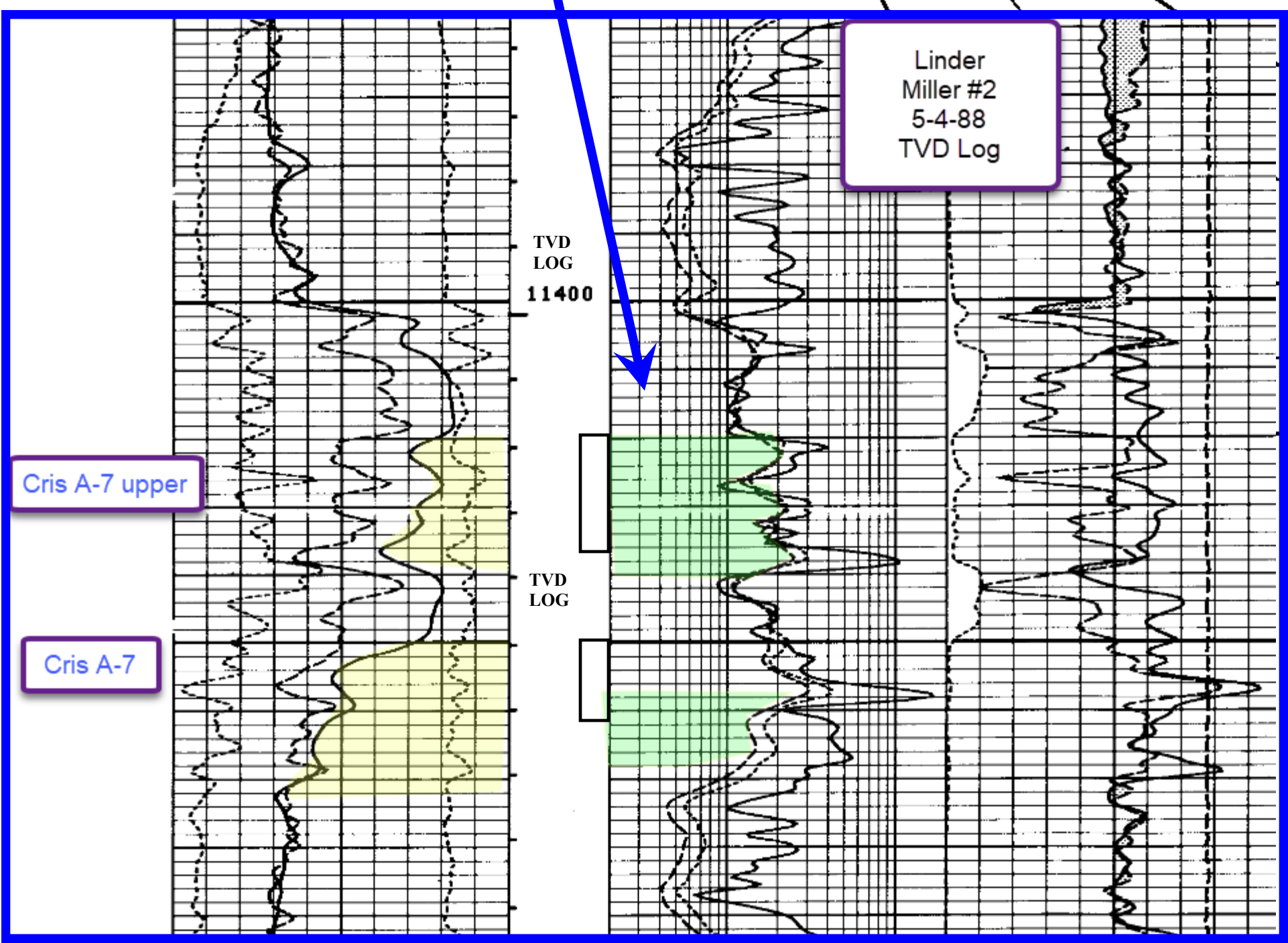
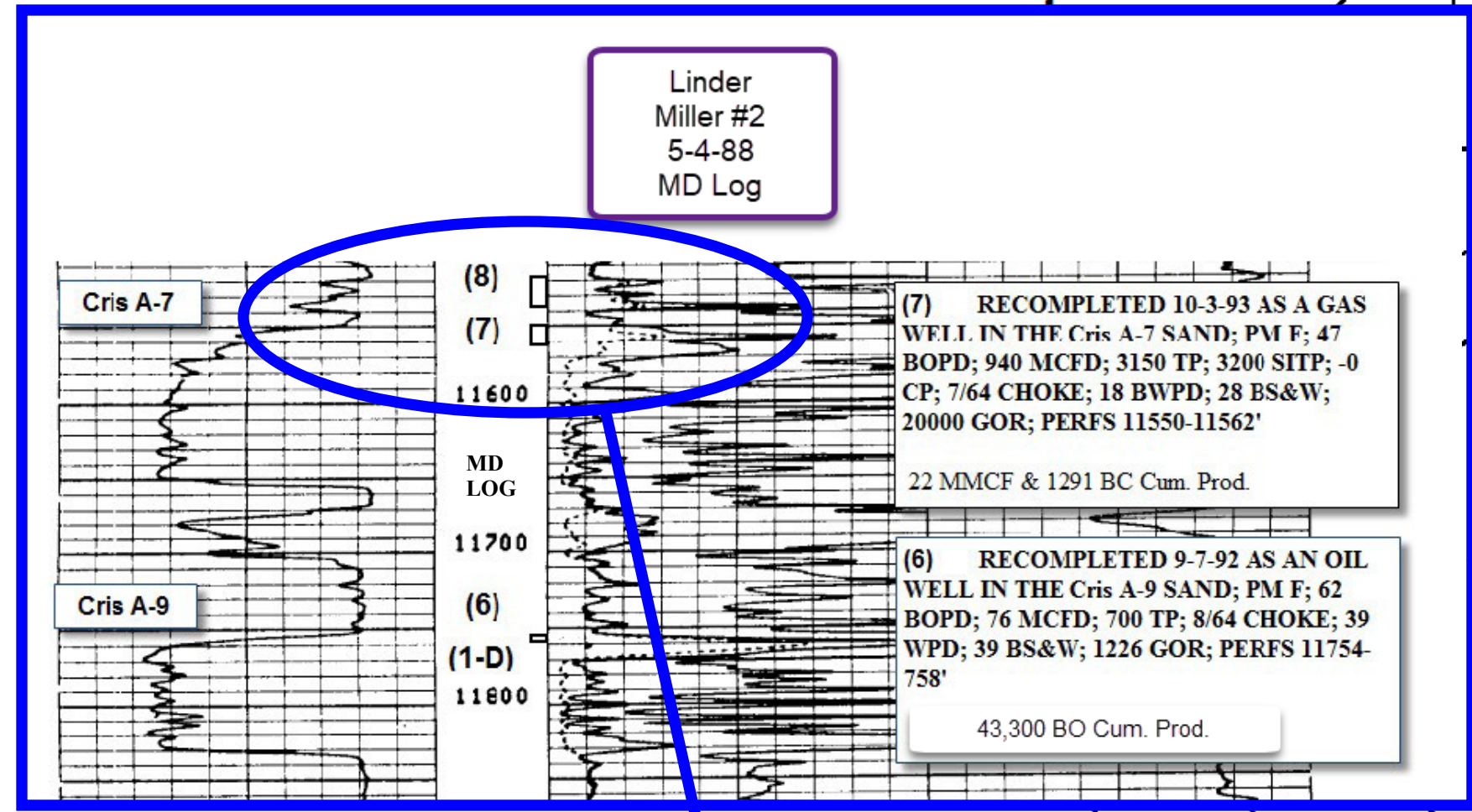
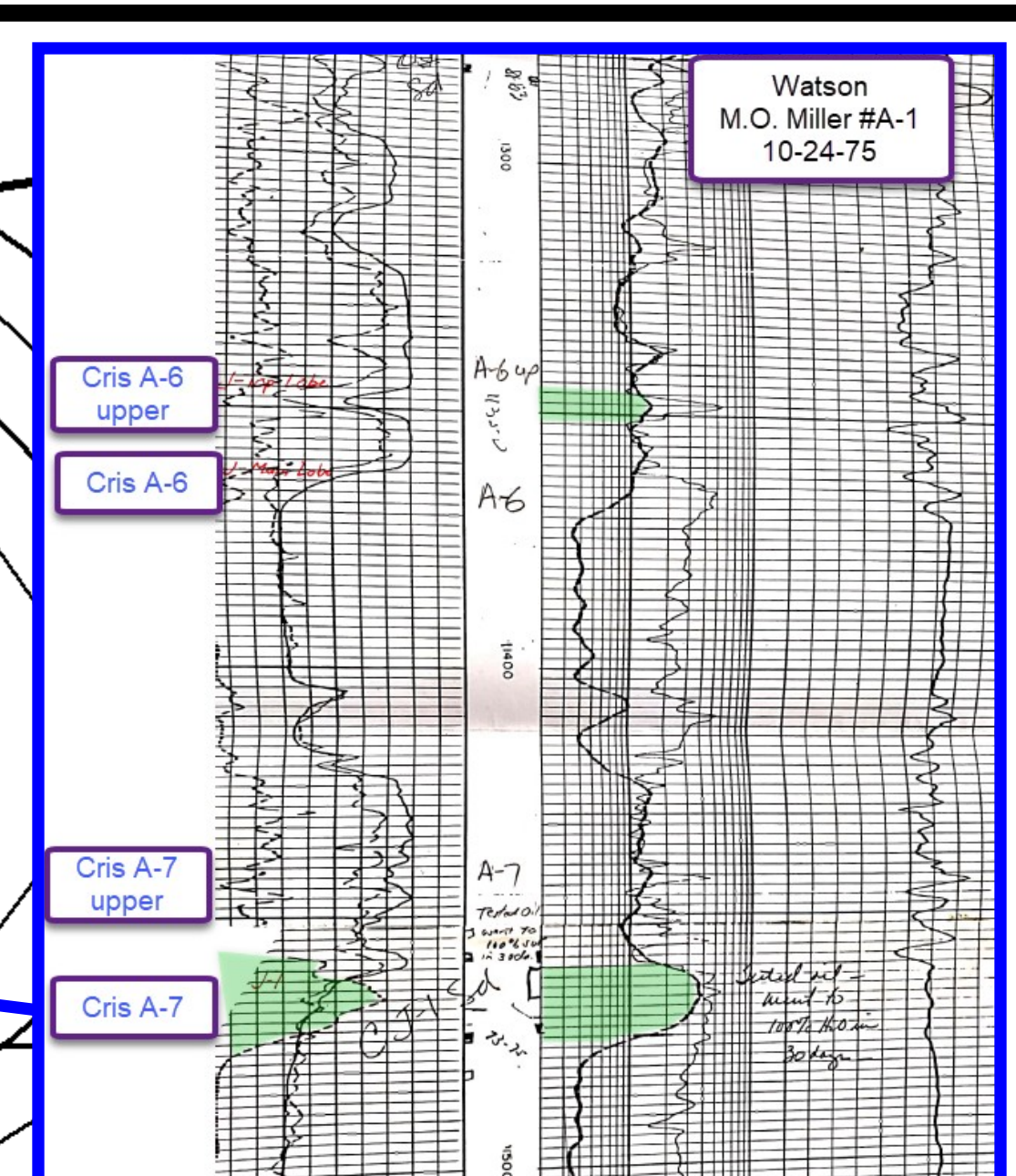
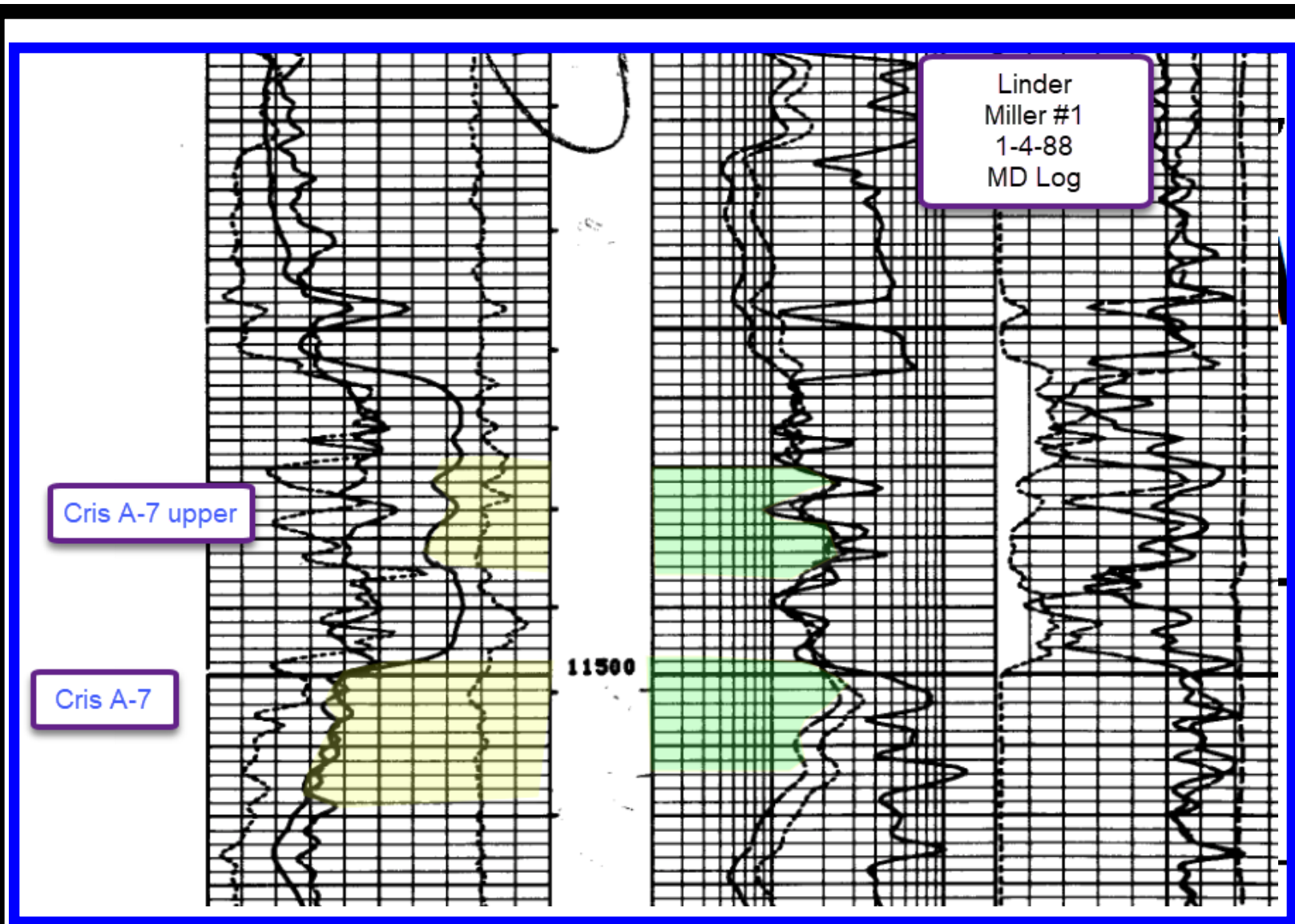
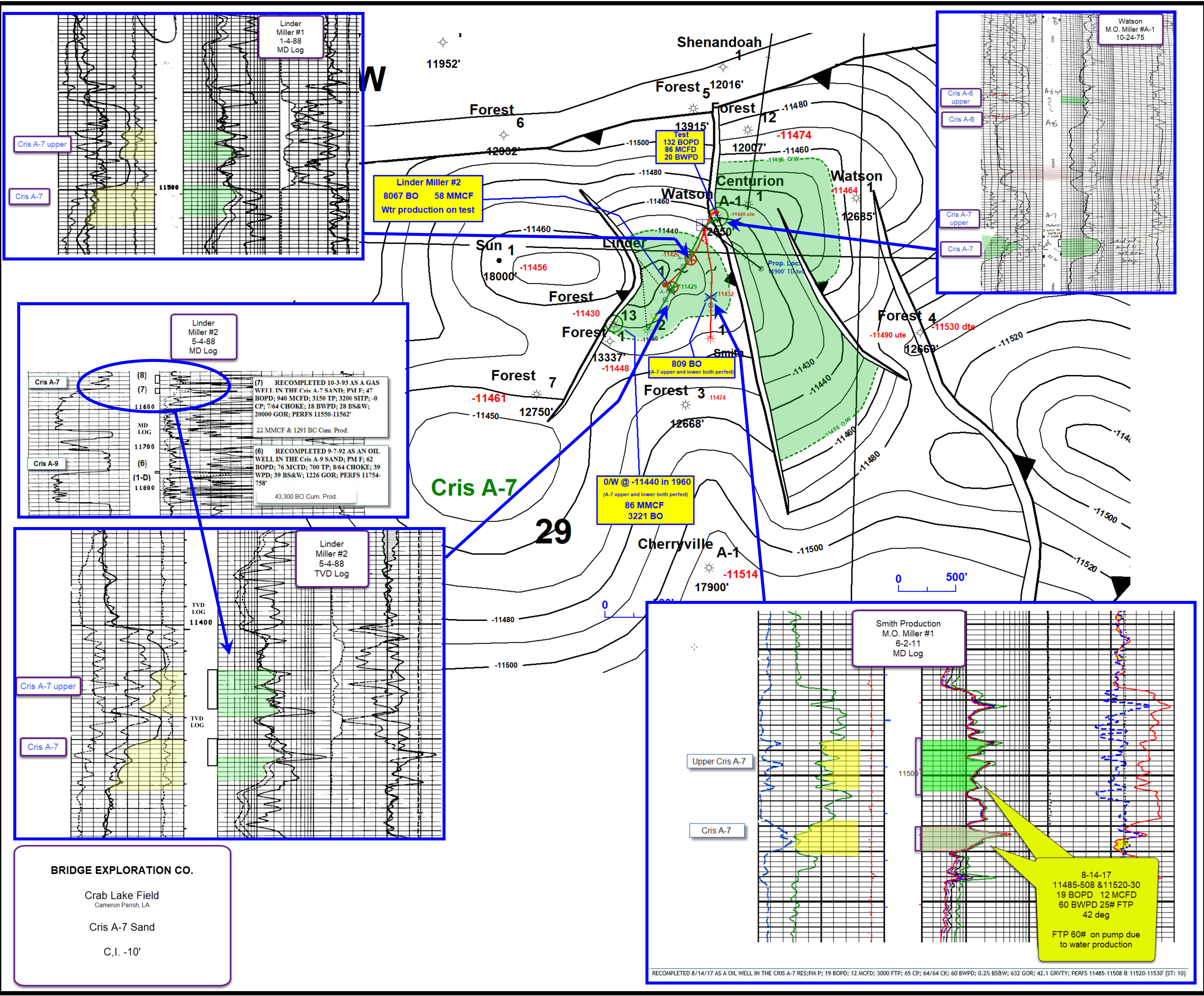
**BRIDGE EXPLORATION CO.**

Crab Lake Field  
Cameron Parish, LA

Cris A-8 Sand  
C.I. -10'



UNSUCCESSFULLY RECOMPLETED 6/6/17 AS A OIL WELL IN THE CRIS A-8 SAND RES;PM F 25 FTP; 500 SITP; 64/64 CK; 290 BWPD; PERFS 11626-11631' (ST: 10)



**BRIDGE EXPLORATION CO.**

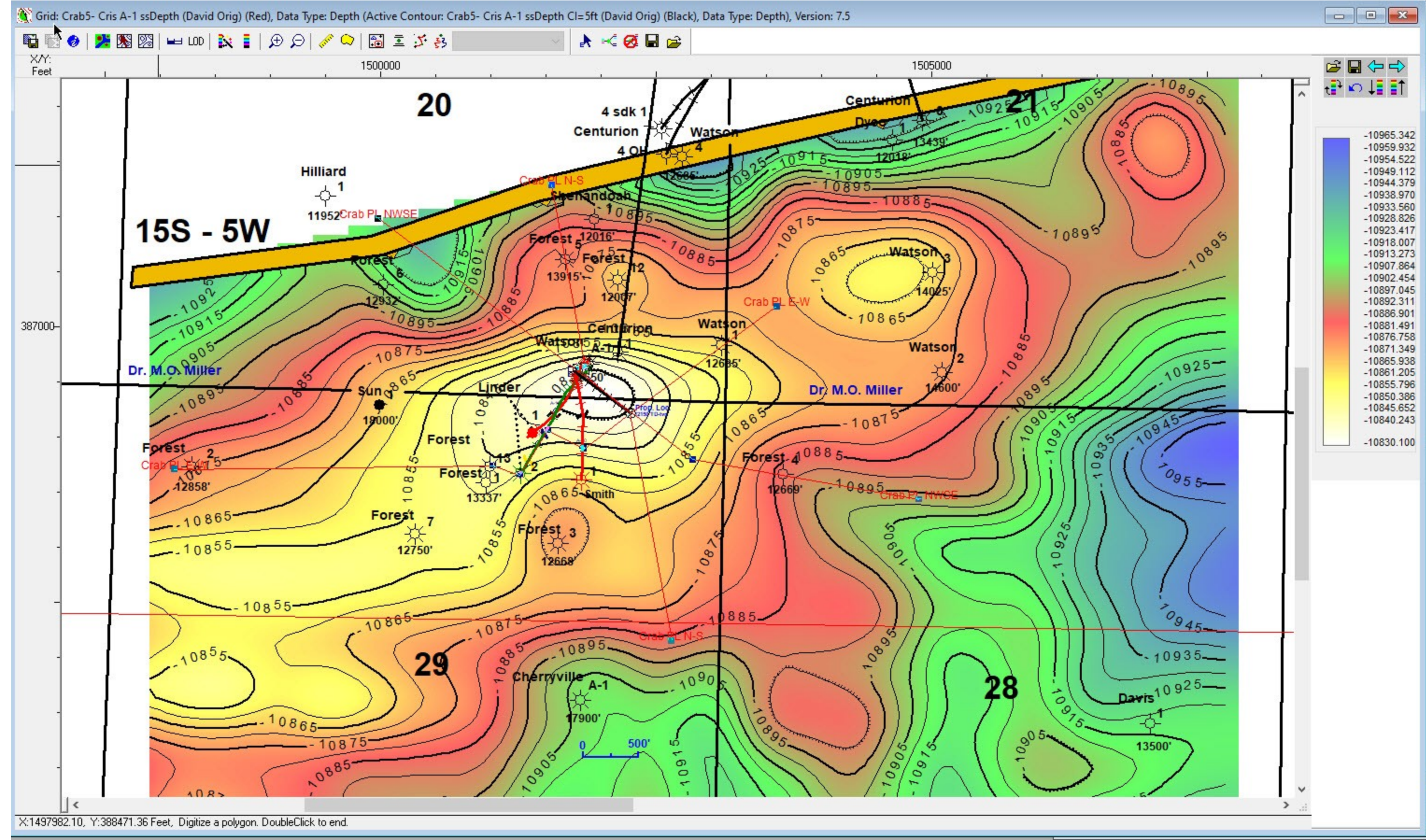
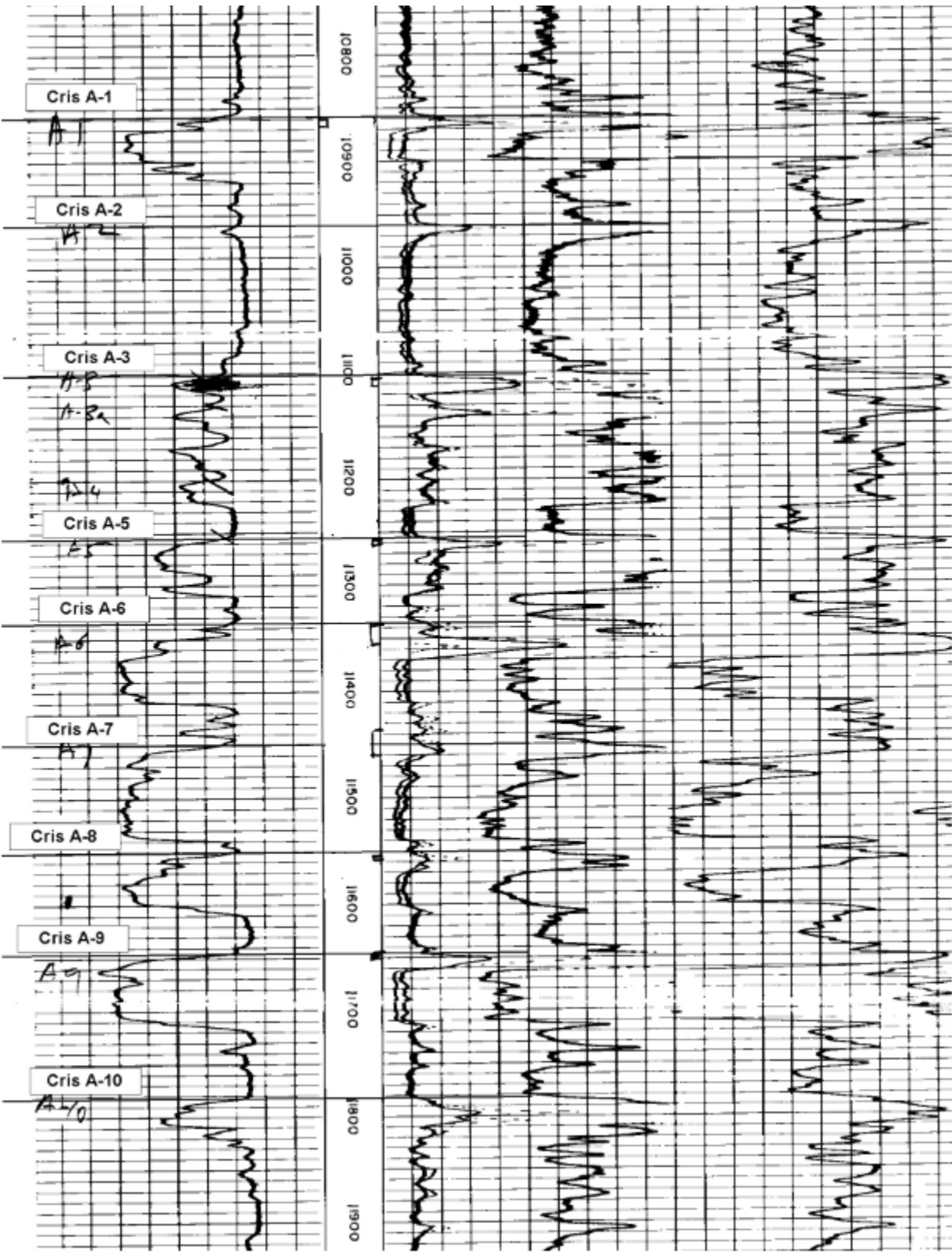
Crab Lake Field  
Cameron Parish, LA

Cris A-7 Sand  
C.I. -10'

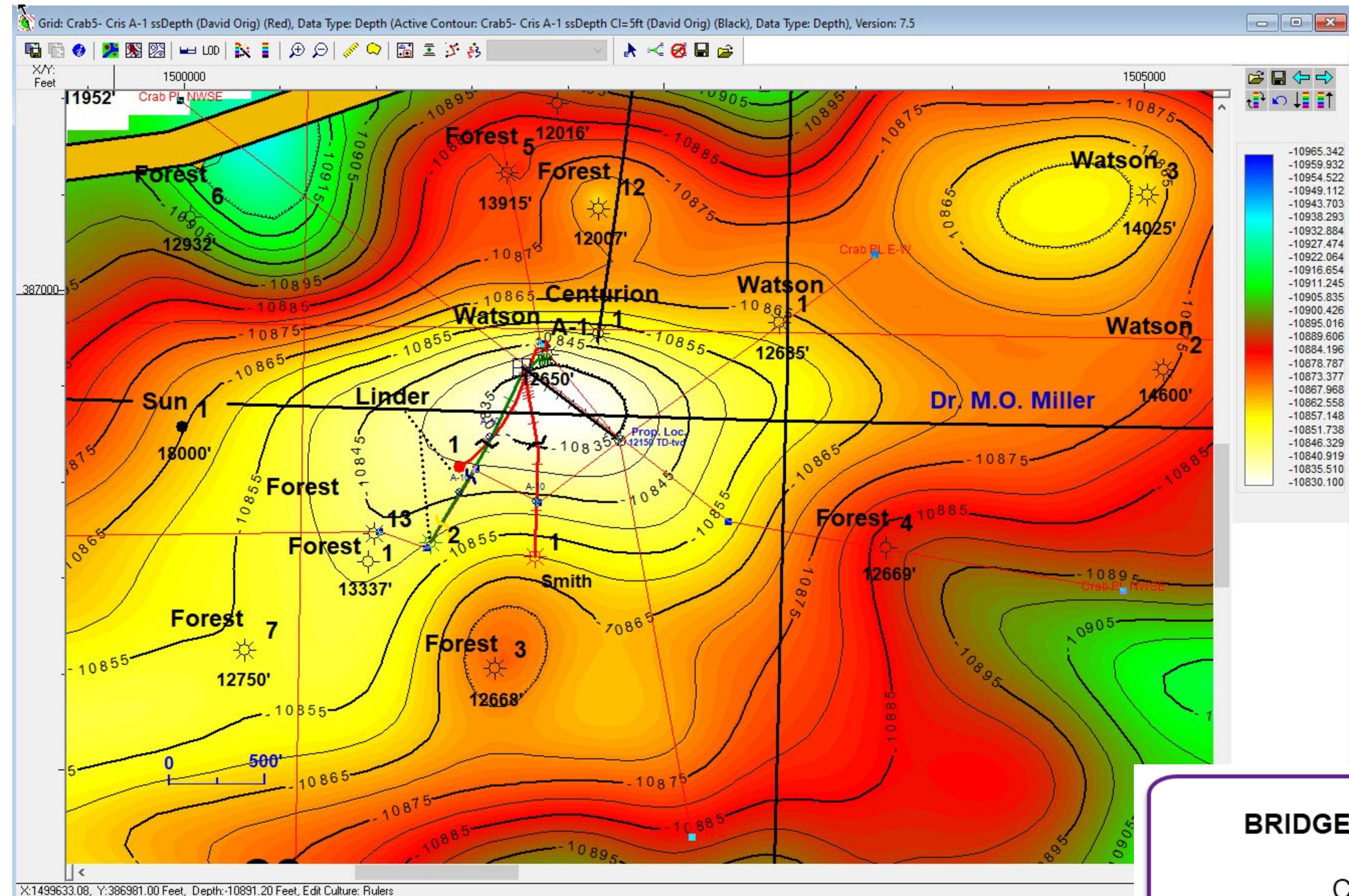
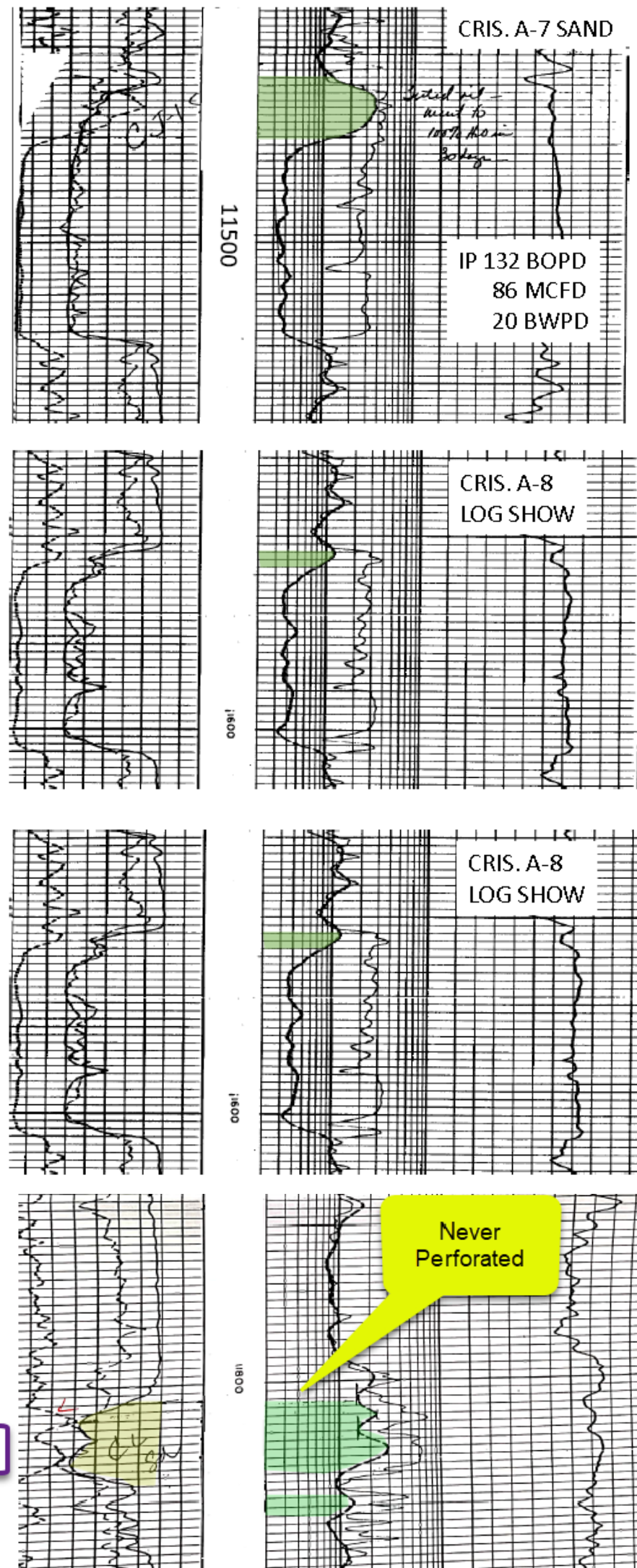
RECOMPLETED 8/14/17 AS A OIL WELL IN THE CRIS A-7 RES; PM P; 19 BOPD; 12 MCFD; 3000 FTP; 65 CP; 64/64 CK; 60 BWPD; 0.2% BS&W; 632 GOR; 42.1 GRVTV; PERFS 11485-11508 & 11520-11530' (ST: 10)



**FOREST MILLER #13  
TYPE LOG**



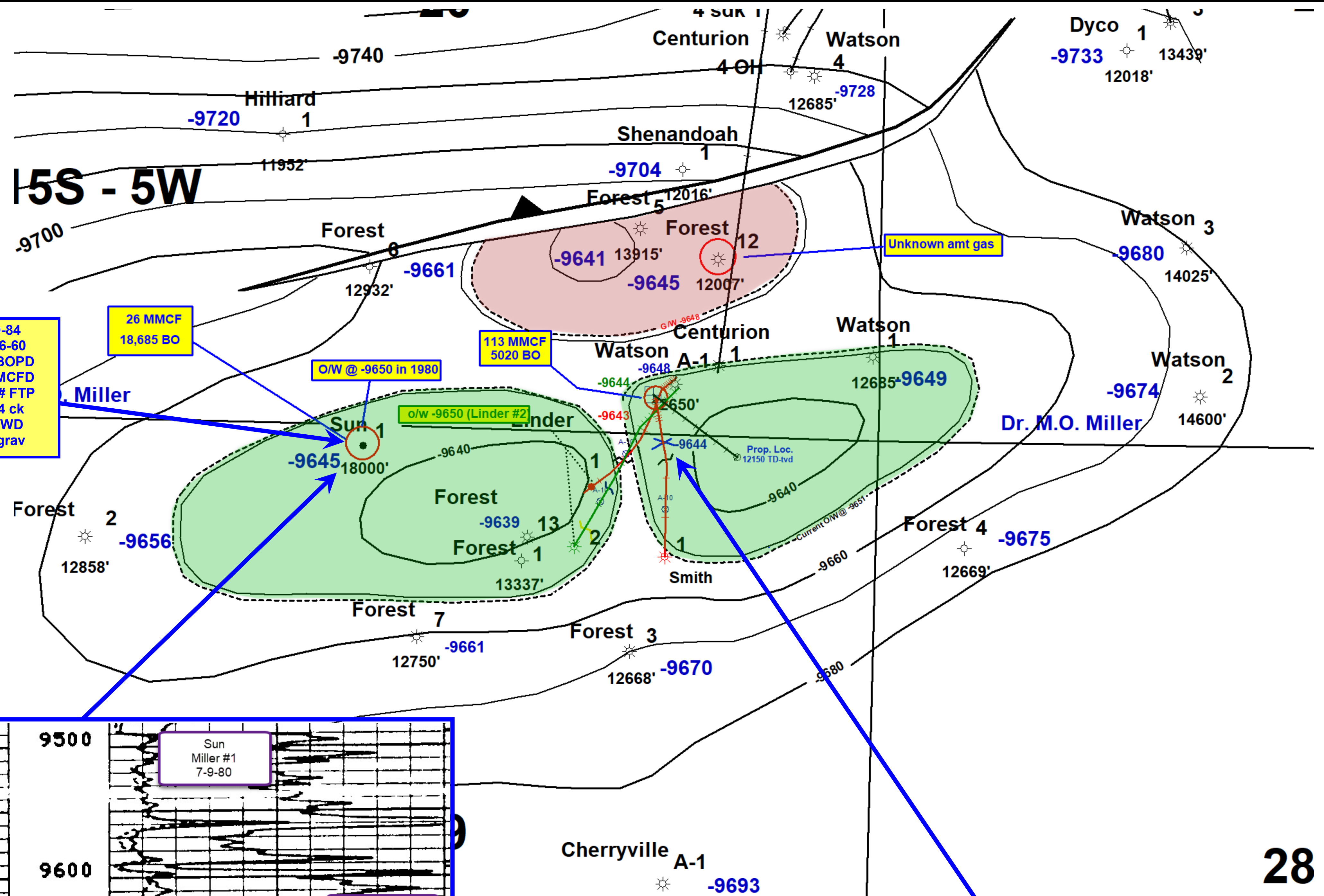
**WATSON - MILLER A-1 5 INCH**



**BRIDGE EXPLORATION CO.**

Crab Lake Field  
Cameron Parish, LA

Cris A-1 Sand  
Time Depth Map  
& TYPE LOG  
C.I. -10'

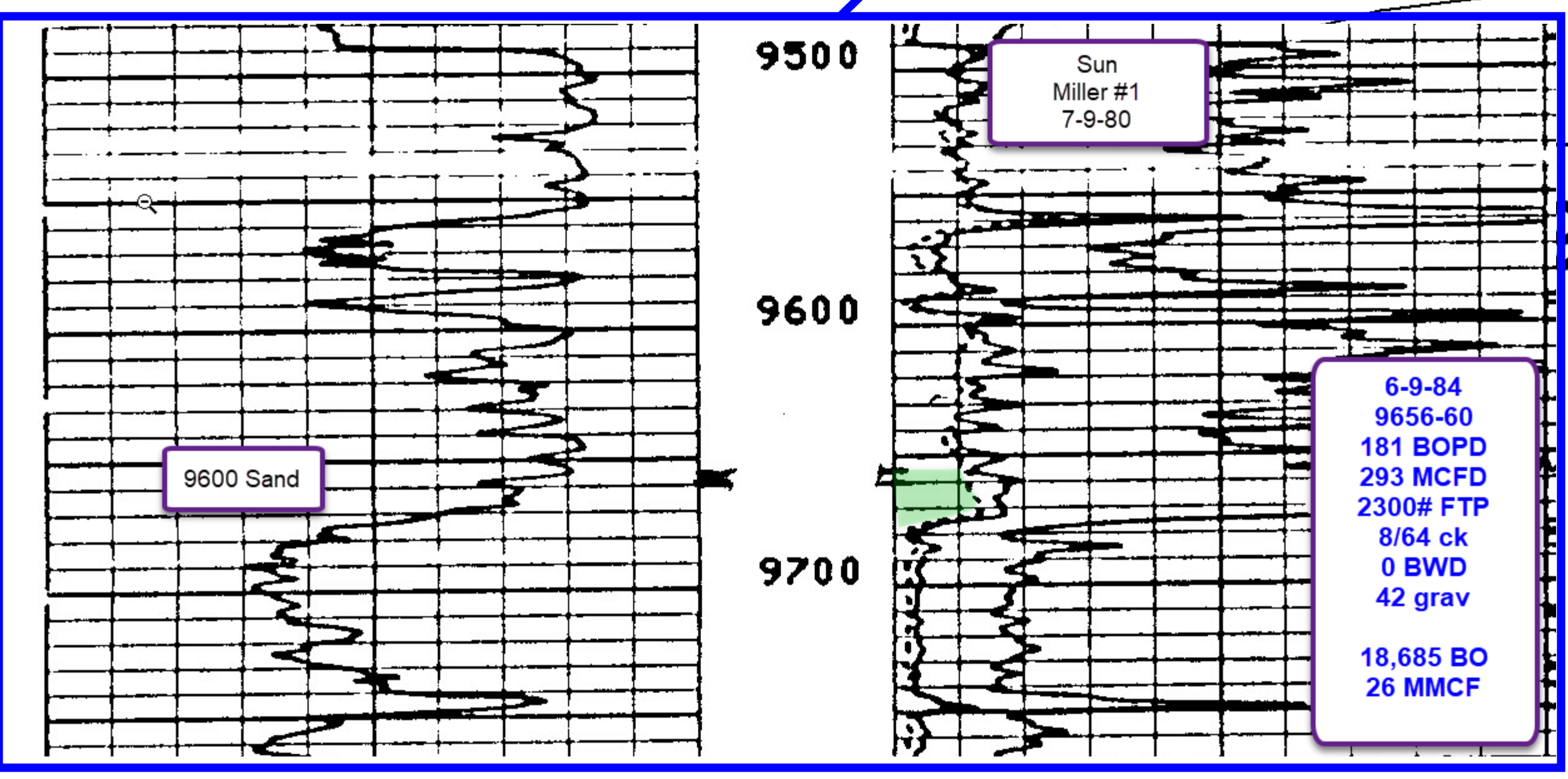


6-9-84  
9656-60  
181 BOPD  
293 MCFD  
2300# FTP  
8/64 ck  
0 BWD  
42 grav

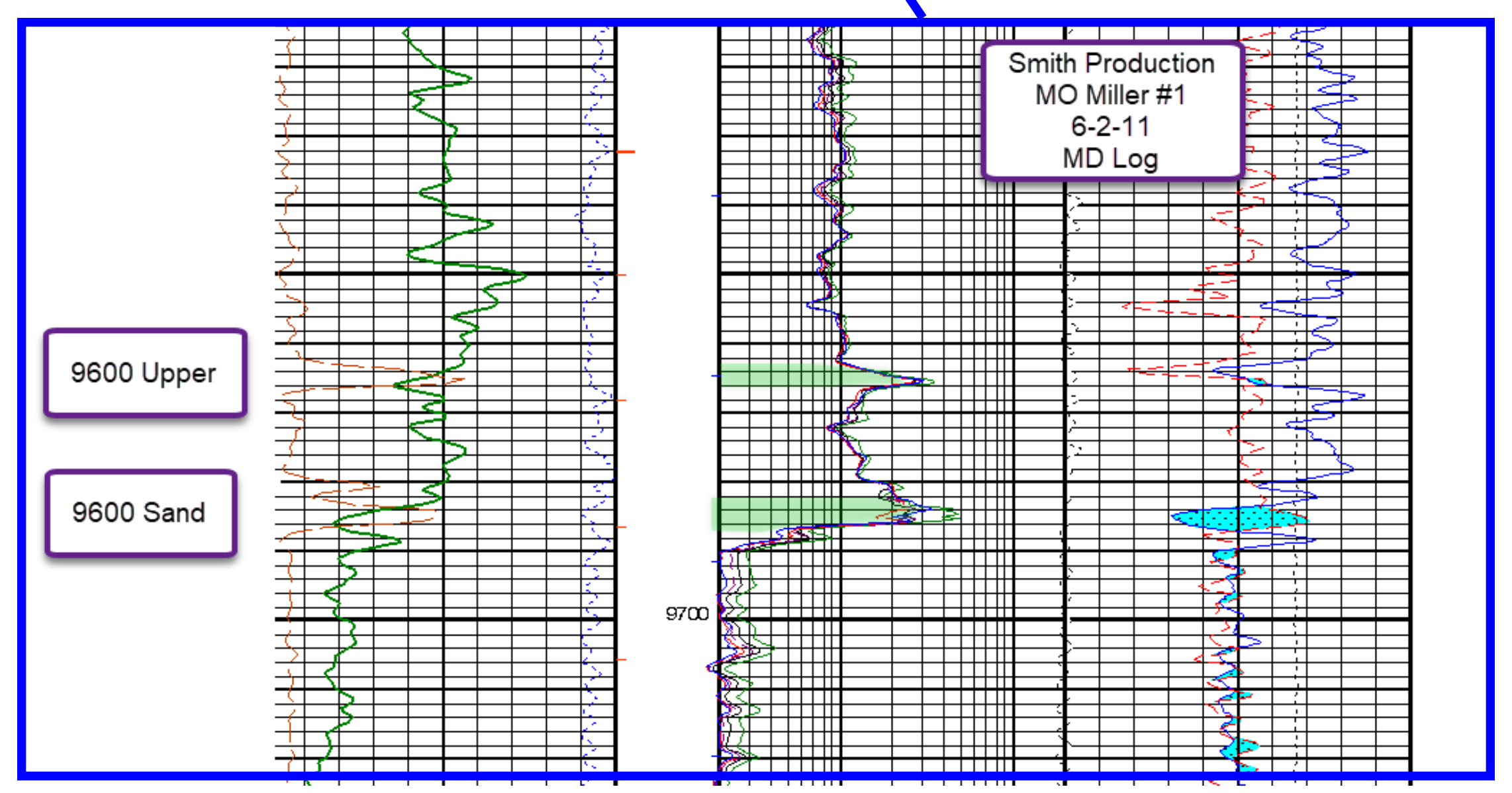
26 MMCF  
18,685 BO

113 MMCF  
5020 BO

Unknown amt gas



6-9-84  
9656-60  
181 BOPD  
293 MCFD  
2300# FTP  
8/64 ck  
0 BWD  
42 grav  
  
18,685 BO  
26 MMCF



**BRIDGE EXPLORATION CO.**  
  
Crab Lake Field  
Cameron Parish, LA  
  
9600 Oil Sand  
  
C.I. = 10'

**9600 Sand Estimate Reserves:**  
  
46 Acres X 6' X 500 BO/AF = 138,000 BO

**9600 Upper Sand Estimate Reserves:**  
  
46 Acres X 3' X 500 BO/AF = 69,000 BO