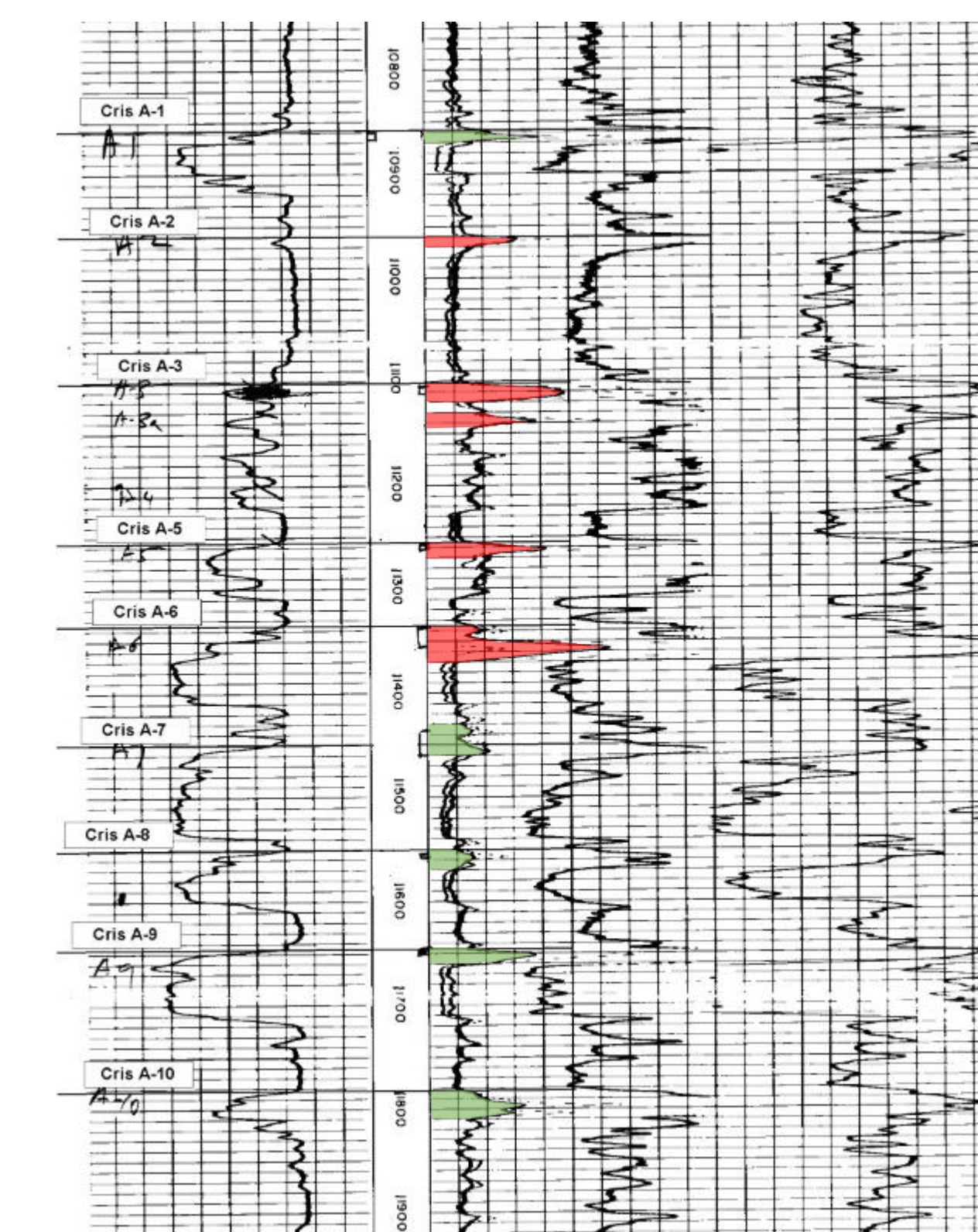


CRAB LAKE PROSPECT POTENTIAL: 1,132 MBO 11,900 TVD

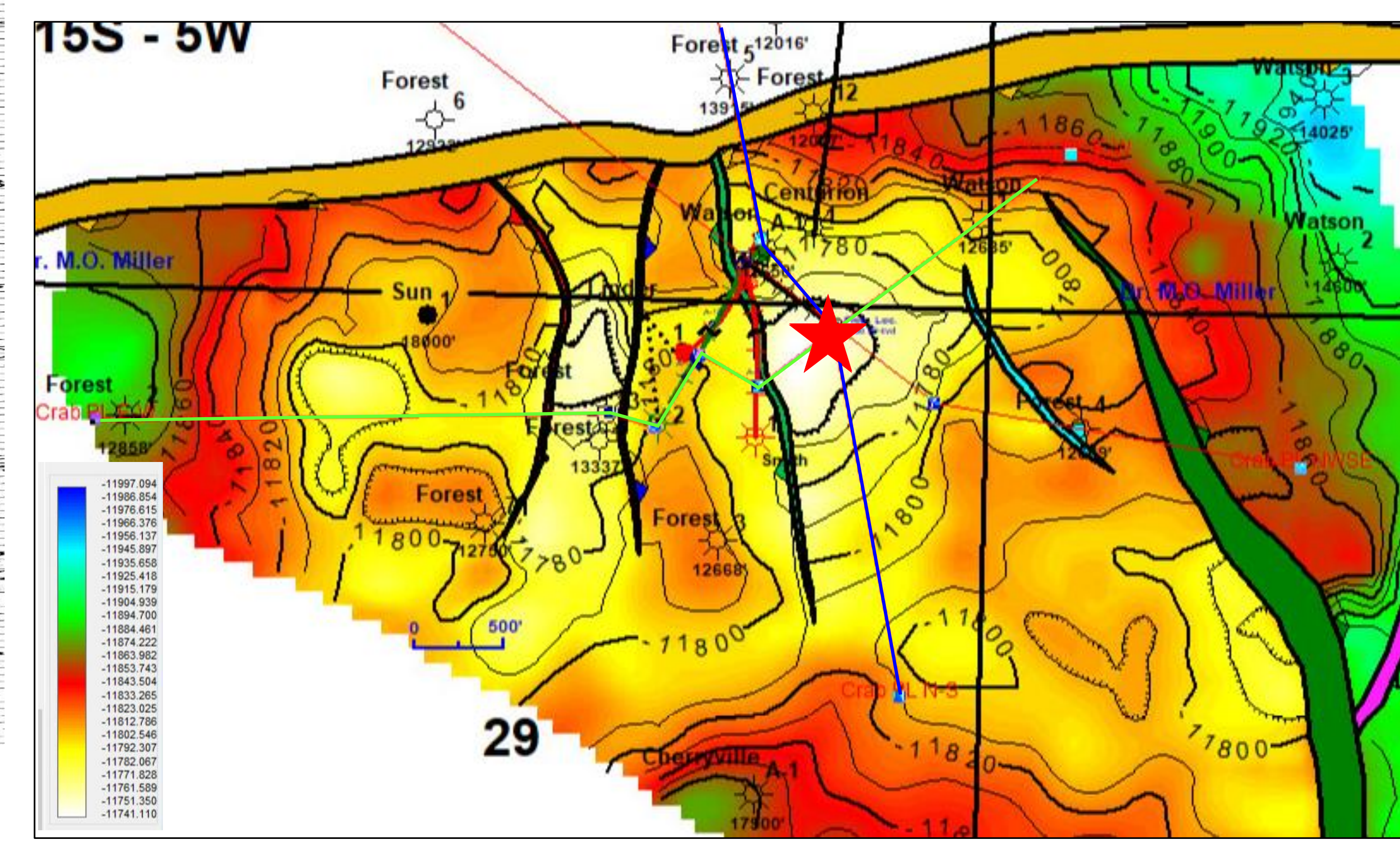
Normally Pressured Miocene Prospect Cris A-1 thru Cris A-10
 Primary Objectives: Cris. A-10 (358 MBO) and Cris. A-7 PUD (332 MBO)
 Secondary Objectives: Cris. A-8 (231 MBO) and Cris. A-9 (211 MBO)



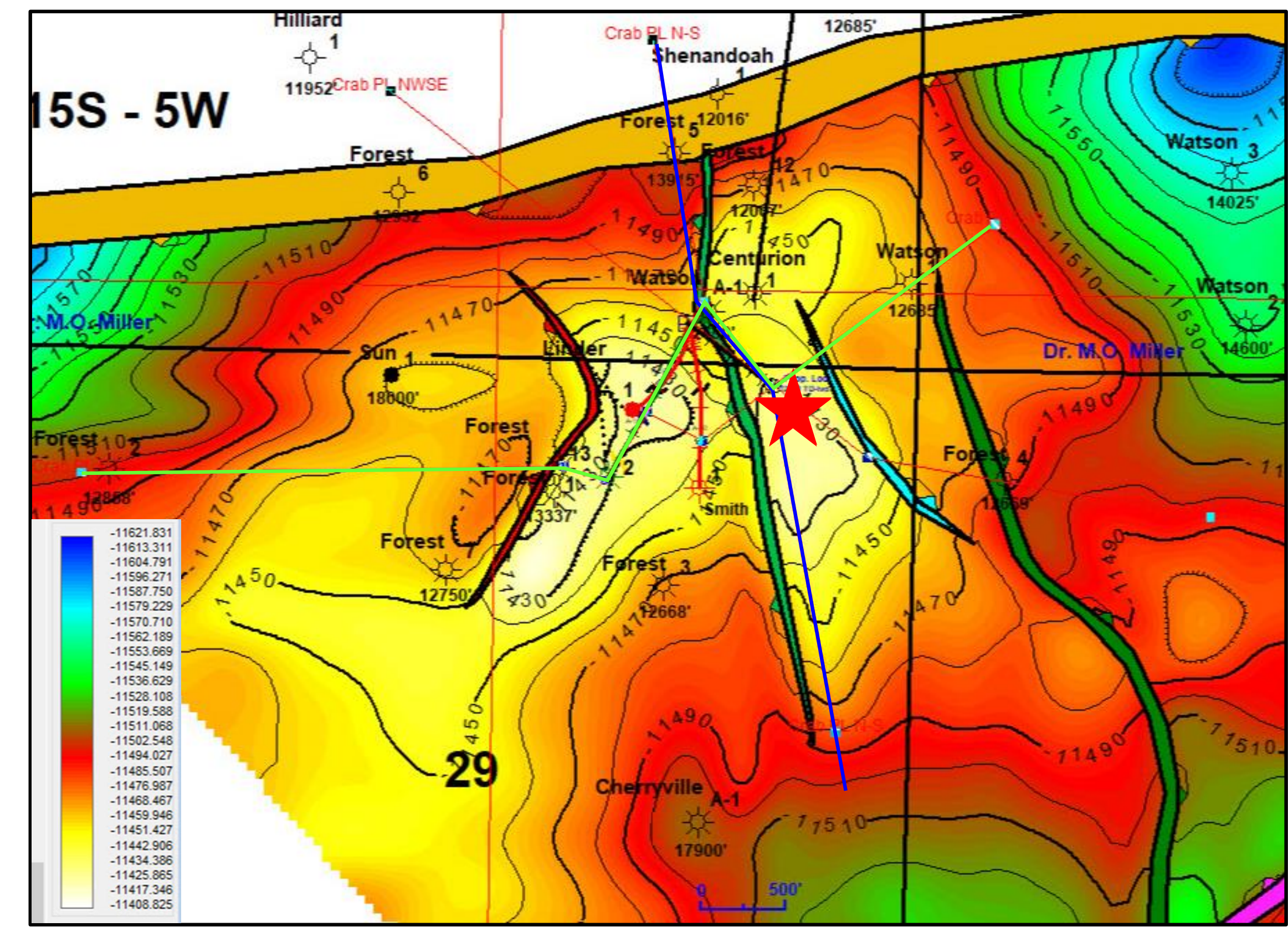
TYPE LOG



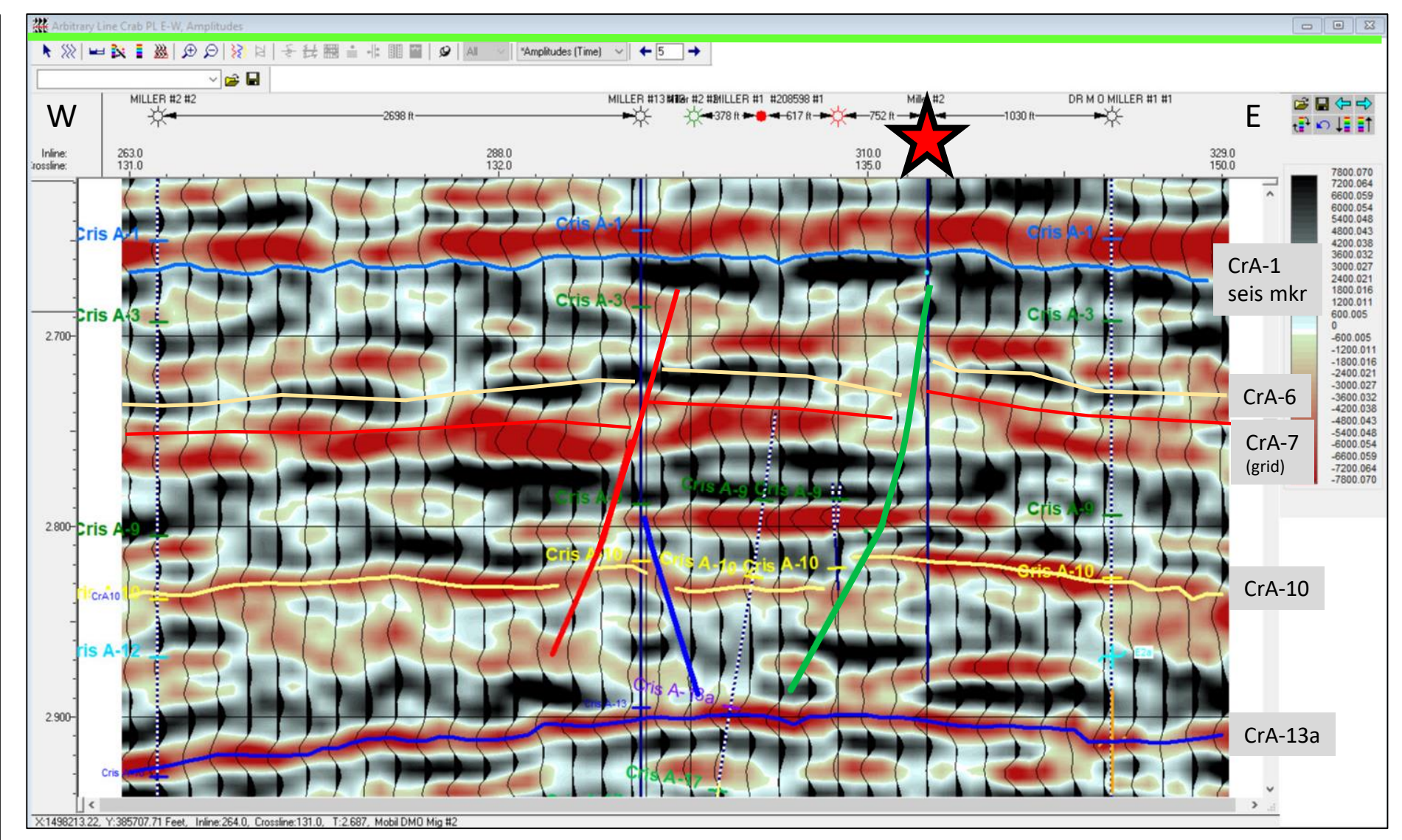
CRIS. A-10 DEPTH MAP



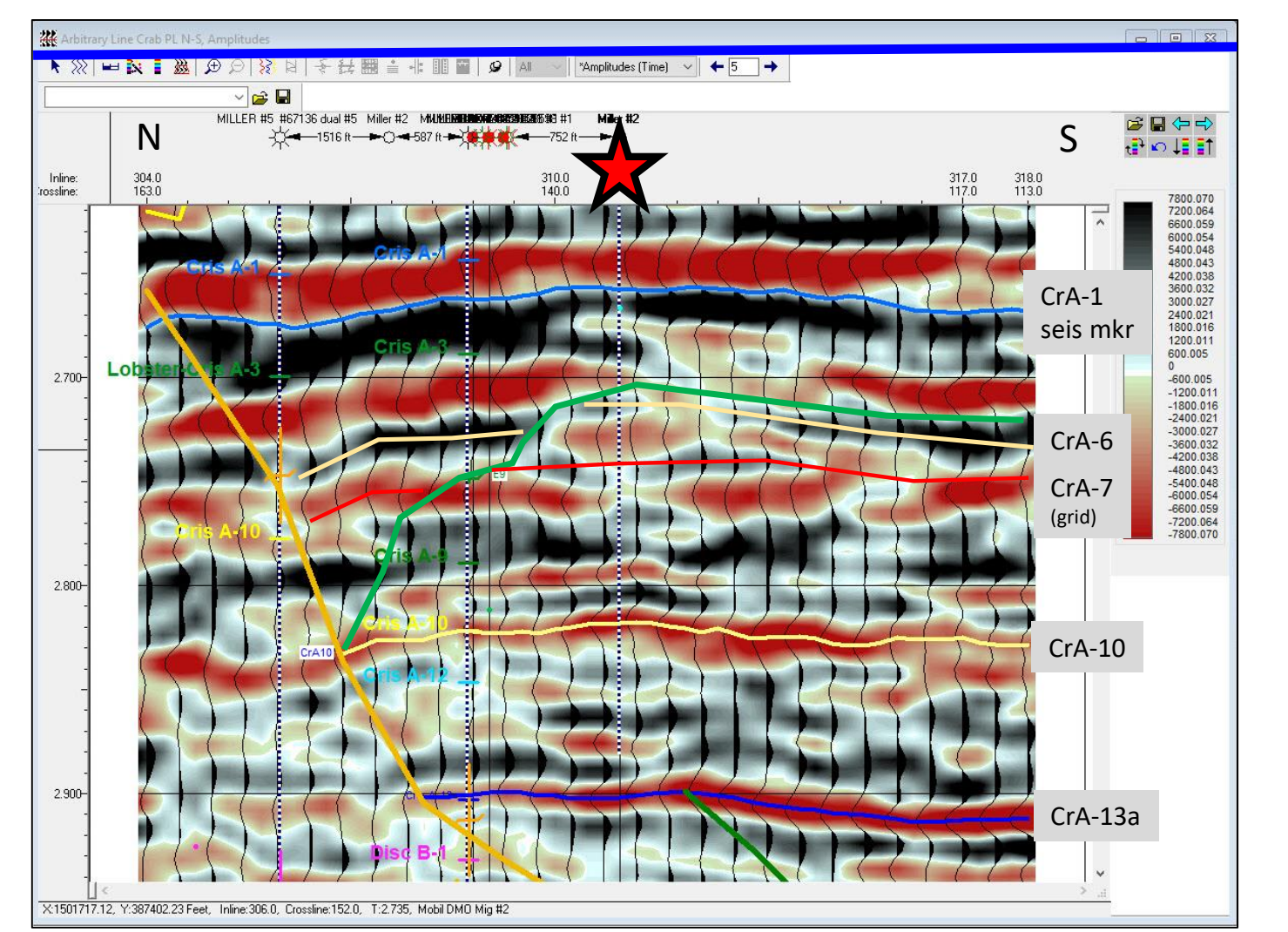
CRIS. A-7 DEPTH MAP



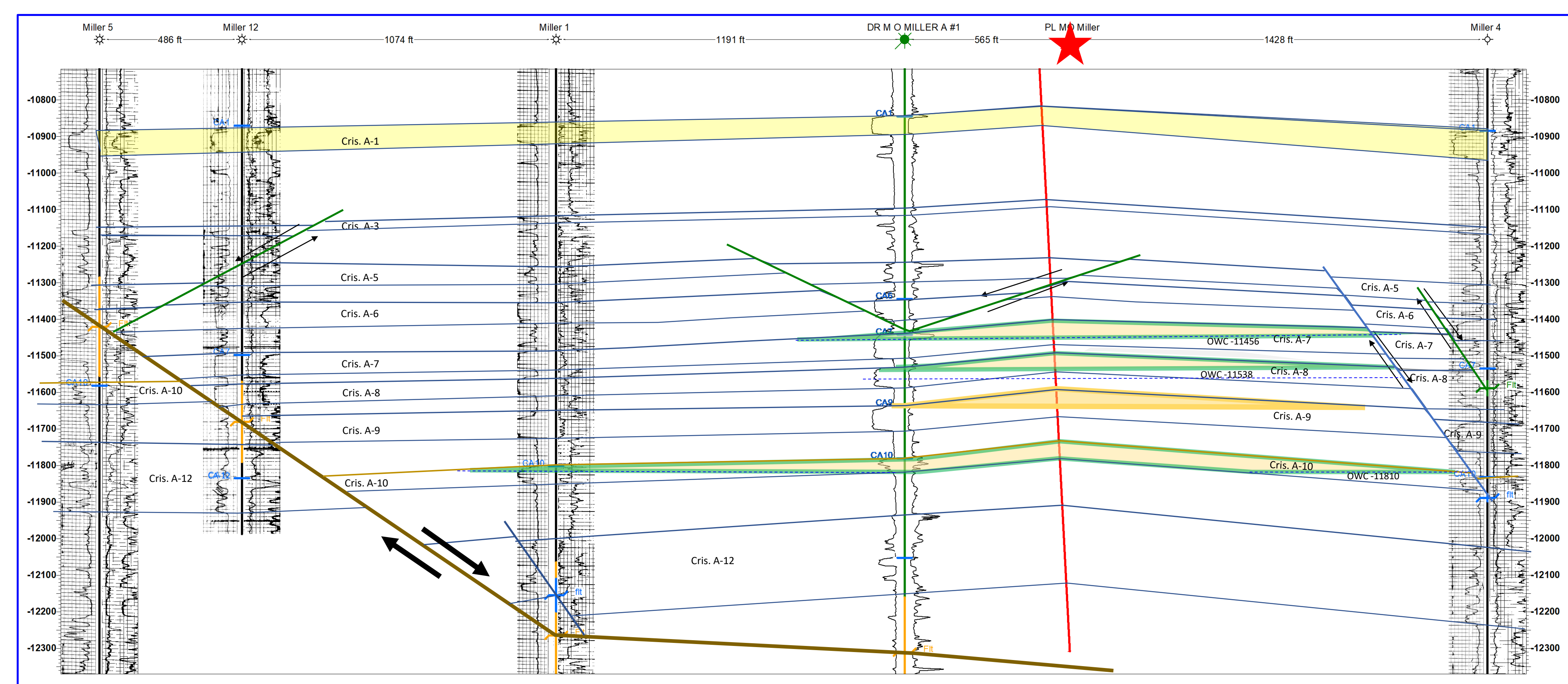
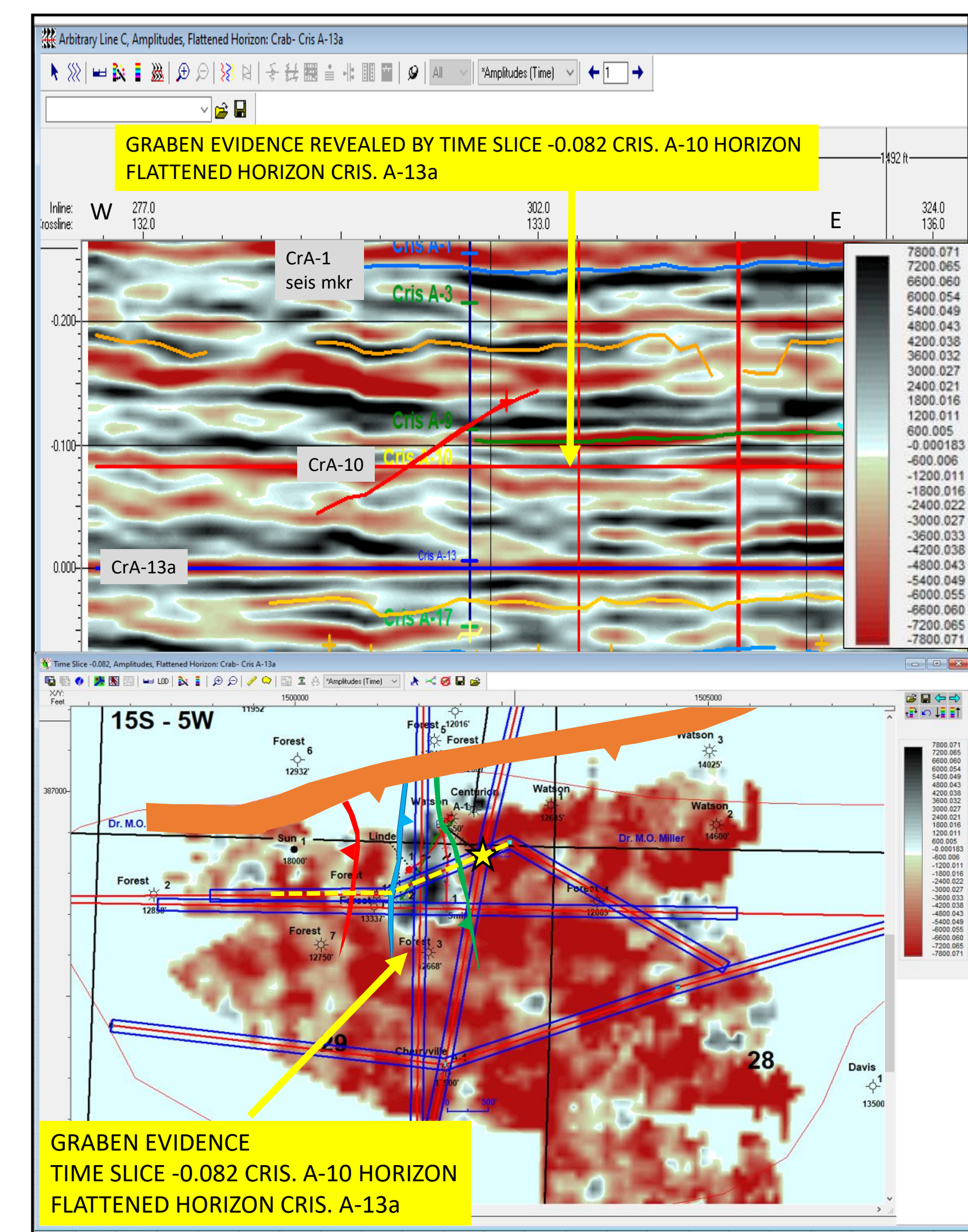
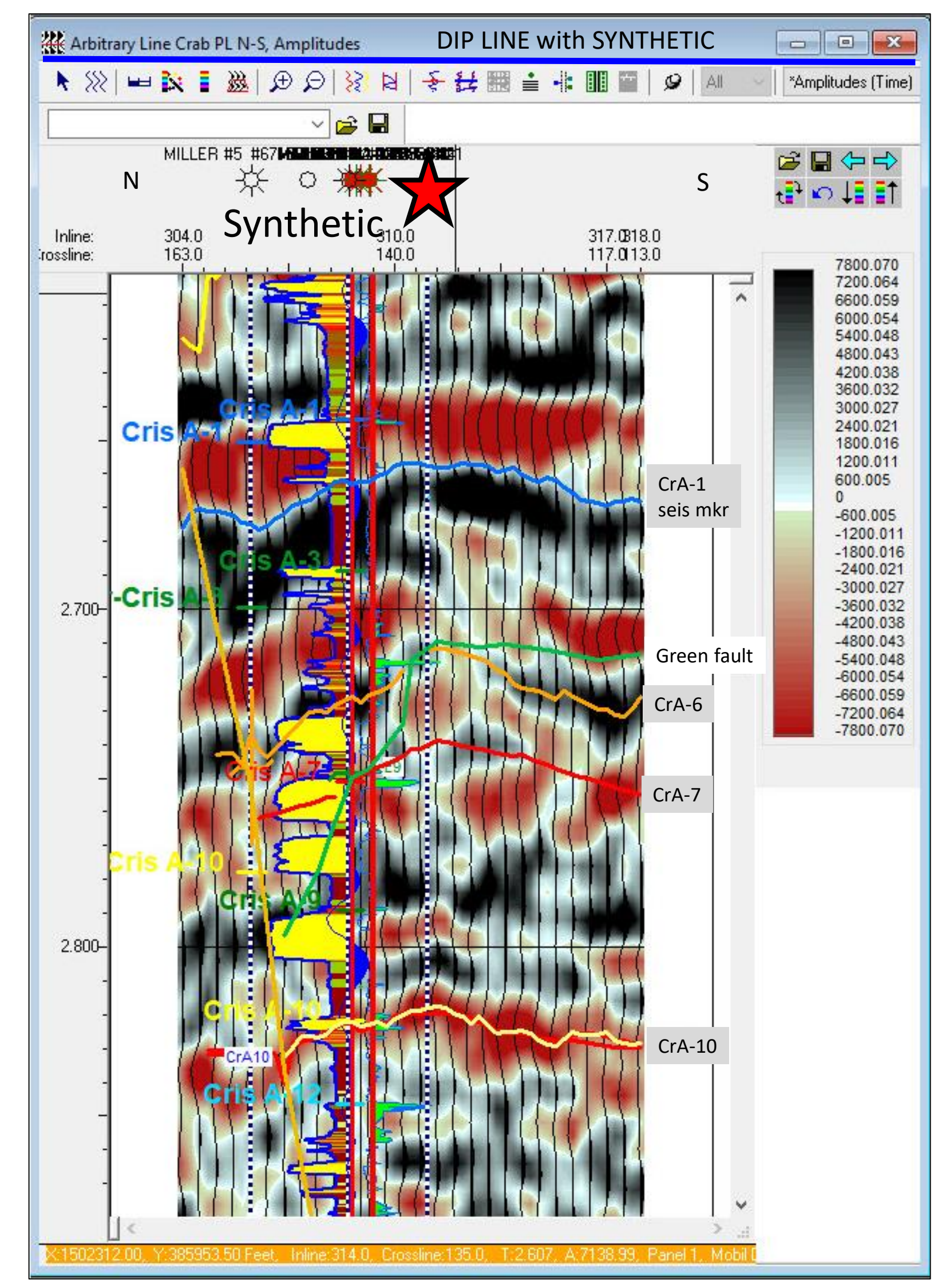
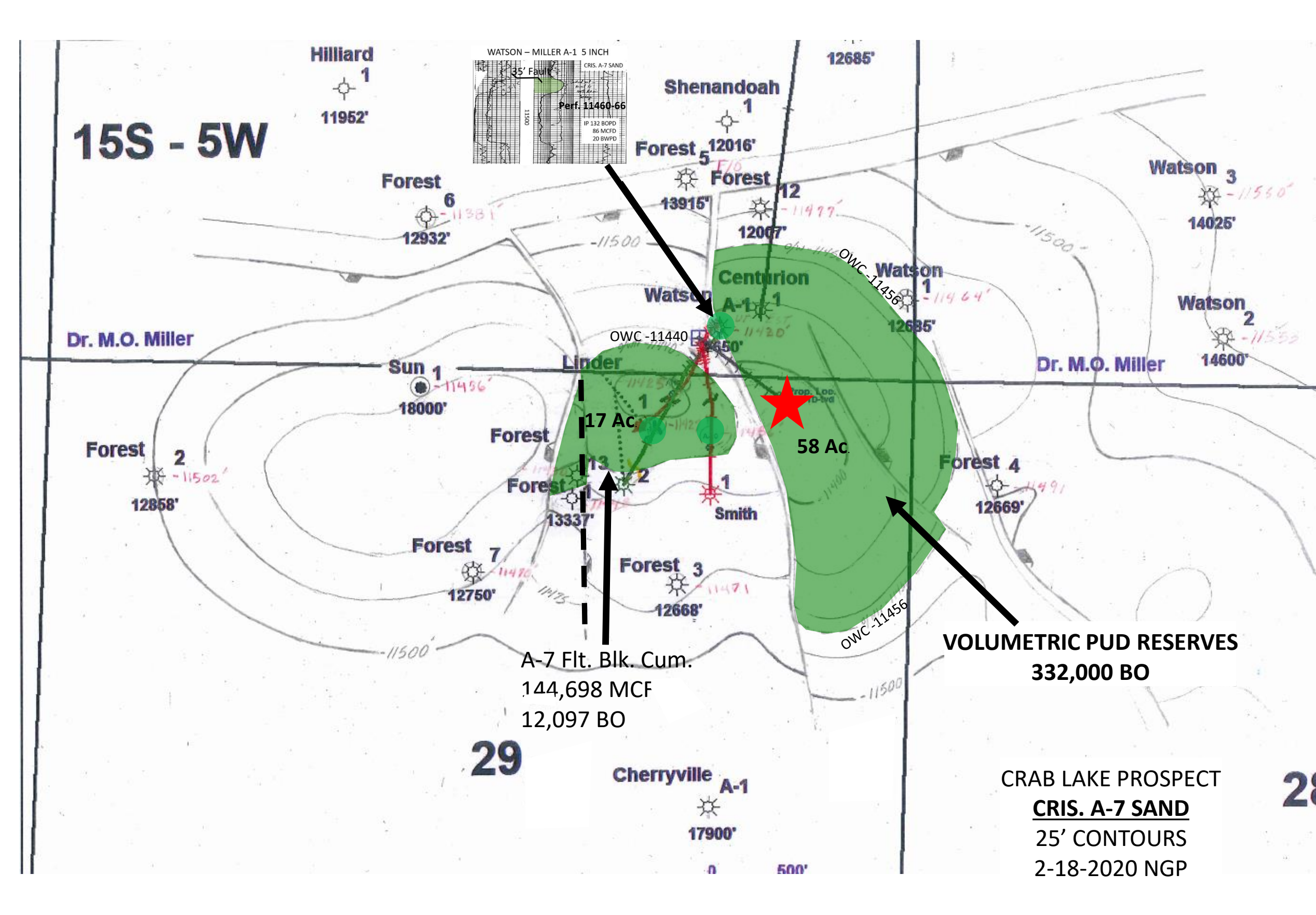
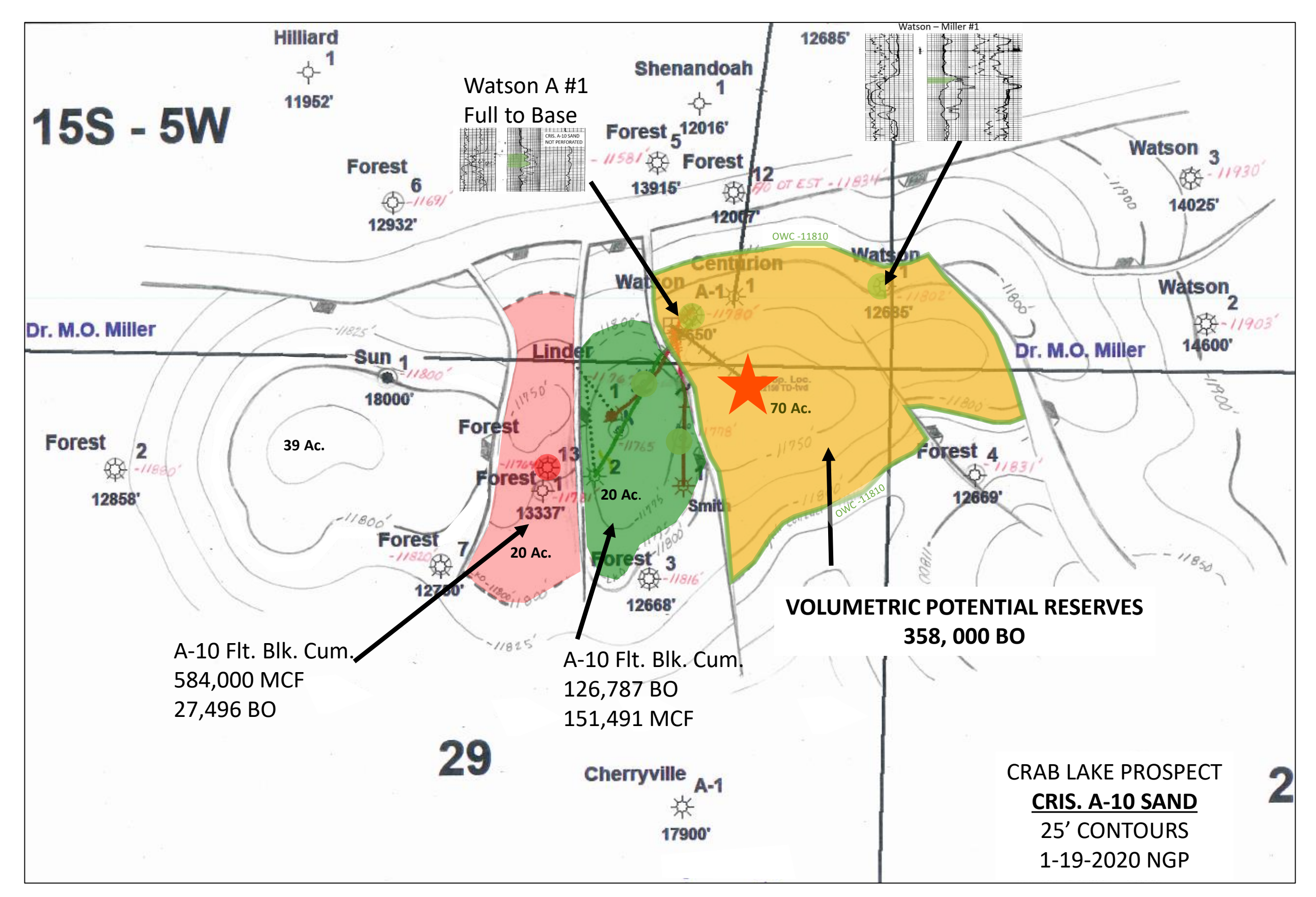
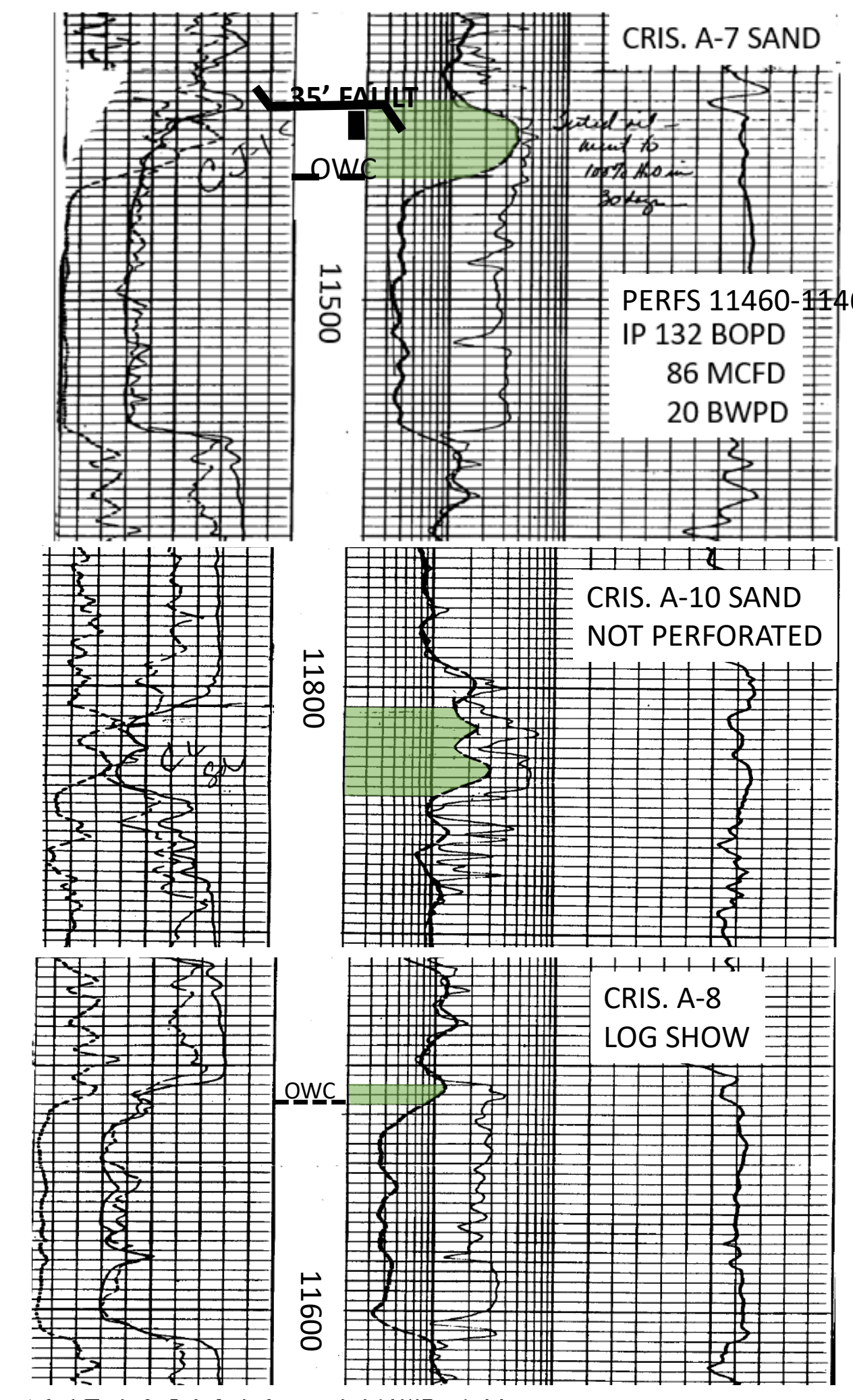
STRIKE LINE



DIP LINE



WATSON - MILLER A-1 5 INCH



RyVOL Oil Reservoir Volumetric Analysis			
Field:	Crab Lake	Date:	1/20/2020
County/Parish:	Cameron	Operator:	Key Operating
State/Country:	Louisiana	Lease:	Miller
Reservoir:	Cris. A-10	Fault Block:	East Block
Wells:	2	Penetrations:	2
Accumulation:	Oil	Press. Base, psia:	14.73
Avg. Depth, Ft:	11,800	Temp. Base, °F:	60
Limiting Contact:	11,810		
Reservoir & Fluid Parameters			
Avg Porosity, %:	28.00%	Crab Lake Field Wells	
Average Sw, (%):	35.00%	Watson Miller #1 & Watson Miller #A.1	
Res. Temp. (°F):	214	Check, °F/R	
Res. Press. (psia):	5,487		
Oil Gravity (API):	41		
Sep. Gas Gr. (API):	0.85	Sep. Press. (psia):	900
GOR (Scf/STB):	1250	Sep. Temp. (°F):	90
Calculated Hydrocarbon Properties (May be entered)			
R _{ui} (RB/STB):	1.5558		
P _{op} (psia):	4,334		
Sol. GOR (Scf/STB):	1,250		
% (RB/STB):	1.5558		
OOP (Bbl/AF):	852.2	-7798 * ((S-J)/D)	
Reservoir Volumetric Parameters			
Res. Area (AC)	76	Proved	
AREY (FT)	16	Probable	
Res. Volume (AV)	640	Possible	
Producing Status	Undeveloped		
Well Name/No.			
Hydrocarbon Recovery			
In-Place	Bbl	MMcft	
Rec. Factor (%GOR)	50.0	50.0	%
Rec. Reserves	327,834	447	
Cum. Production			
Remaining Res.	327,834	447	
As-of Date:			

RyVOL Oil Reservoir Volumetric Analysis			
Field:	Crab Lake	Date:	1/20/2020
County/Parish:	Cameron	Operator:	Key Operating
State/Country:	Louisiana	Lease:	Miller
Reservoir:	Cris. A-7	Fault Block:	East Block
Wells:	2	Penetrations:	2
Accumulation:	Oil	Press. Base, psia:	14.73
Avg. Depth, Ft:	11,425	Temp. Base, °F:	60
Limiting Contact:	11,456		
Reservoir & Fluid Parameters			
Avg Porosity, %:	28.00%	Crab Lake Field Wells	
Average Sw, (%):	35.00%	Watson Miller #1 & Watson Miller #A.1	
Res. Temp. (°F):	214	Check, °F/R	
Res. Press. (psia):	5,370		
Oil Gravity (API):	39.0		
Sep. Gas Gr. (API):	0.85	Sep. Press. (psia):	900
GOR (Scf/STB):	648	Sep. Temp. (°F):	90
Calculated Hydrocarbon Properties (May be entered)			
R _{ui} (RB/STB):	1.3591		
P _{op} (psia):	2,611		
Sol. GOR (Scf/STB):	648		
% (RB/STB):	1.3591		
OOP (Bbl/AF):	1,038.5	-7798 * ((S-J)/D)	
Reservoir Volumetric Parameters			
Res. Area (AC)	40	Proved	
AREY (FT)	16	Probable	
Res. Volume (AV)	640	Possible	
Producing Status	Undeveloped		
Well Name/No.			
Hydrocarbon Recovery			
In-Place	Bbl	MMcft	
Rec. Factor (%GOR)	50.0	50.0	%
Rec. Reserves	317,639	400	
Cum. Production			
Remaining Res.	317,639	400	
As-of Date:			

