

**Smith
Broussard Landing #1
Estimated Reserves
7-7-11**

BL-5d Lobe (If tests Oil)

48 Acres x 5' x 400 BO/AF = 96,000 BO

Upper Brookshire

21 Acres x 5' x 600 BO/AF = 63,000 BO

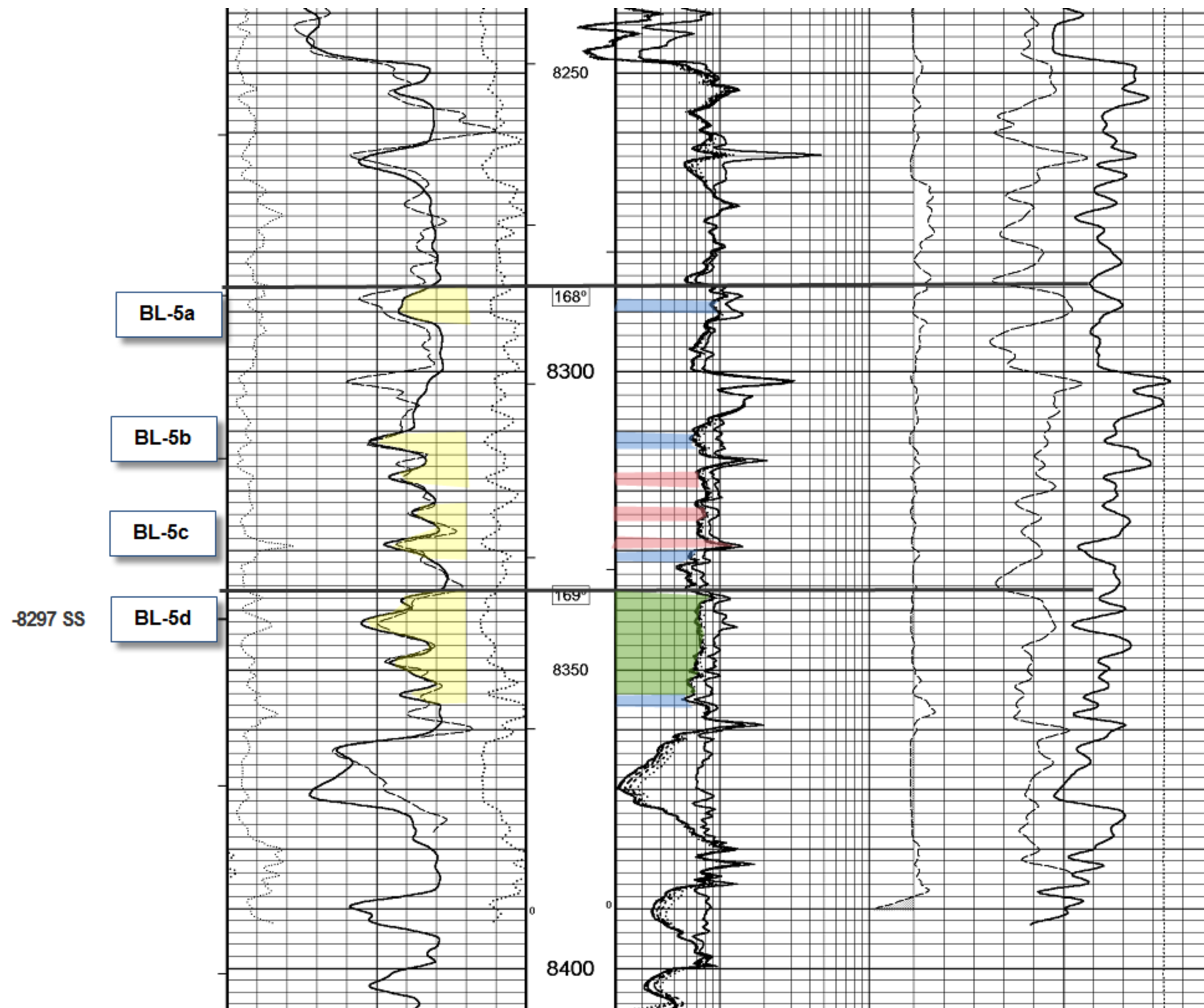
Worby (If tests Oil, acreage similar to Hebert)

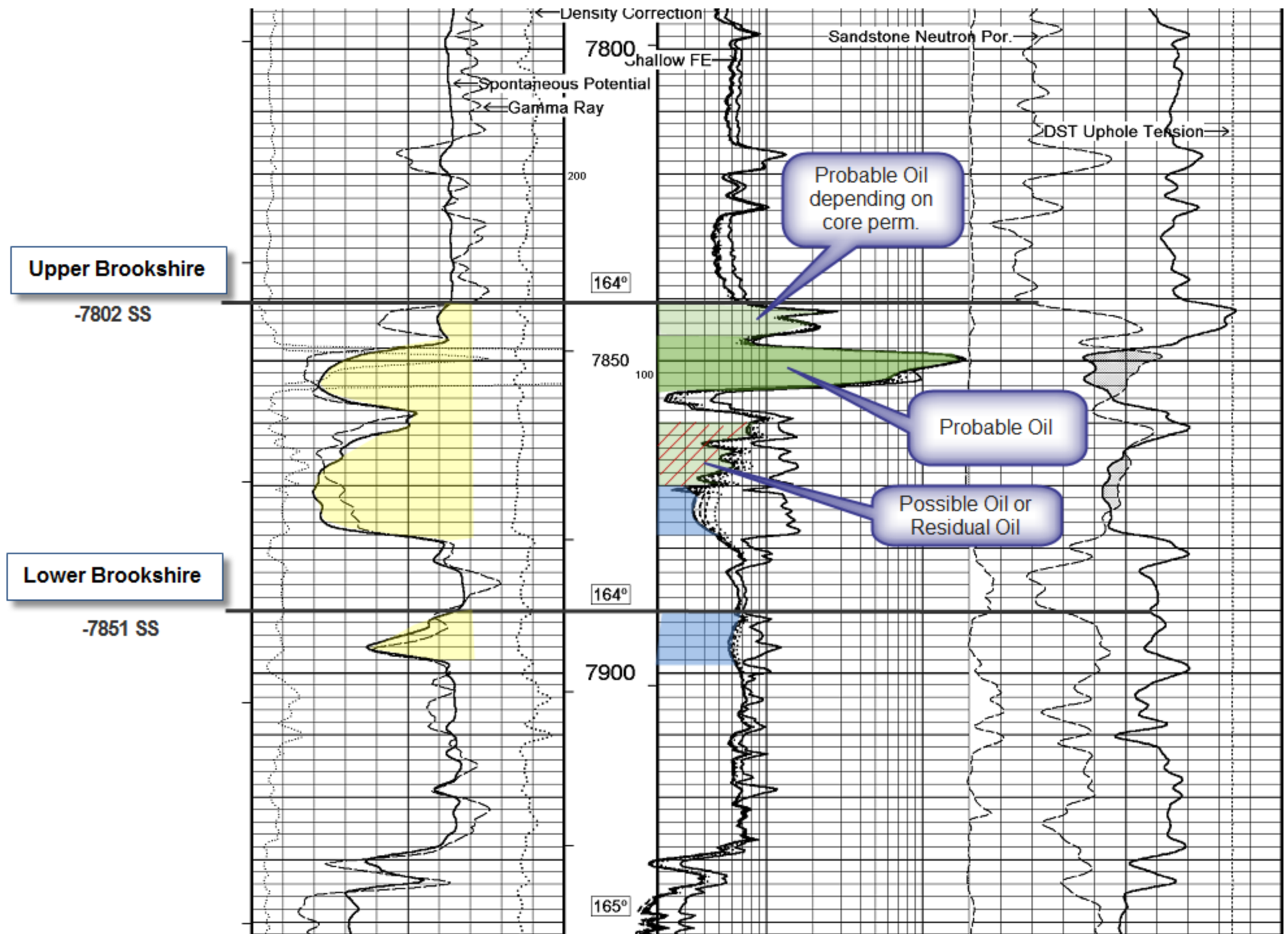
9 Acres x 2' x 400 BO/AF = 7200 BO

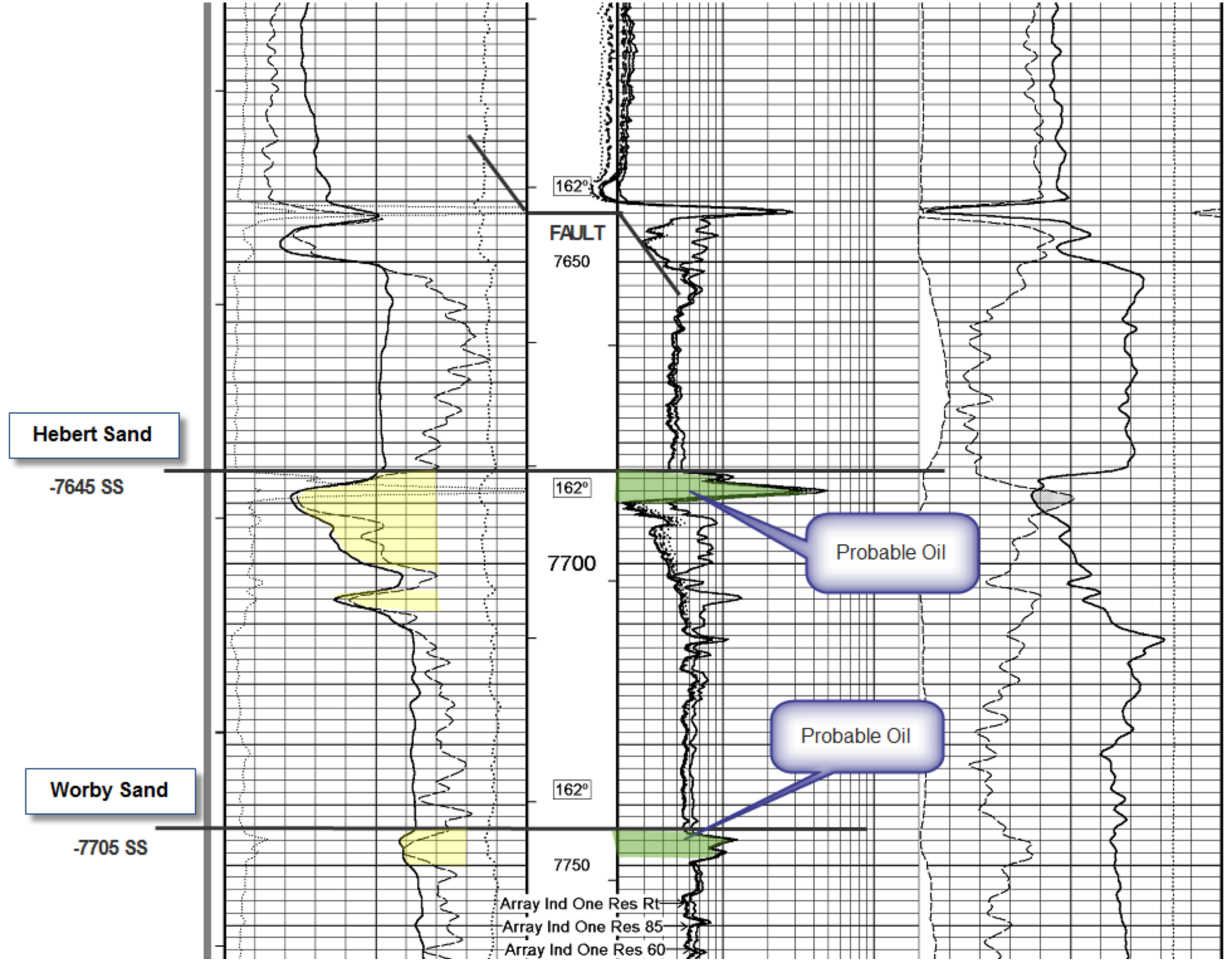
Hebert Sand

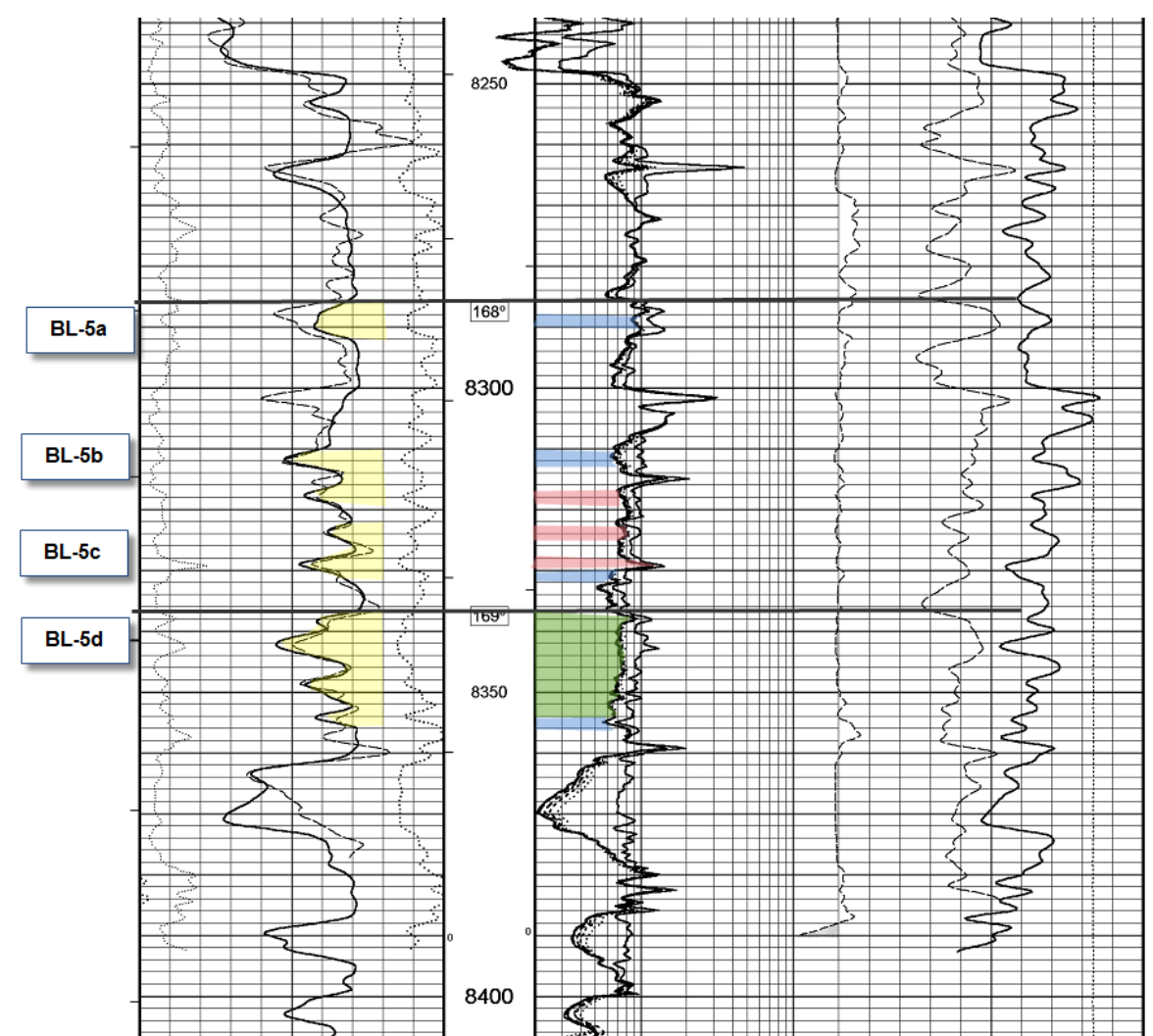
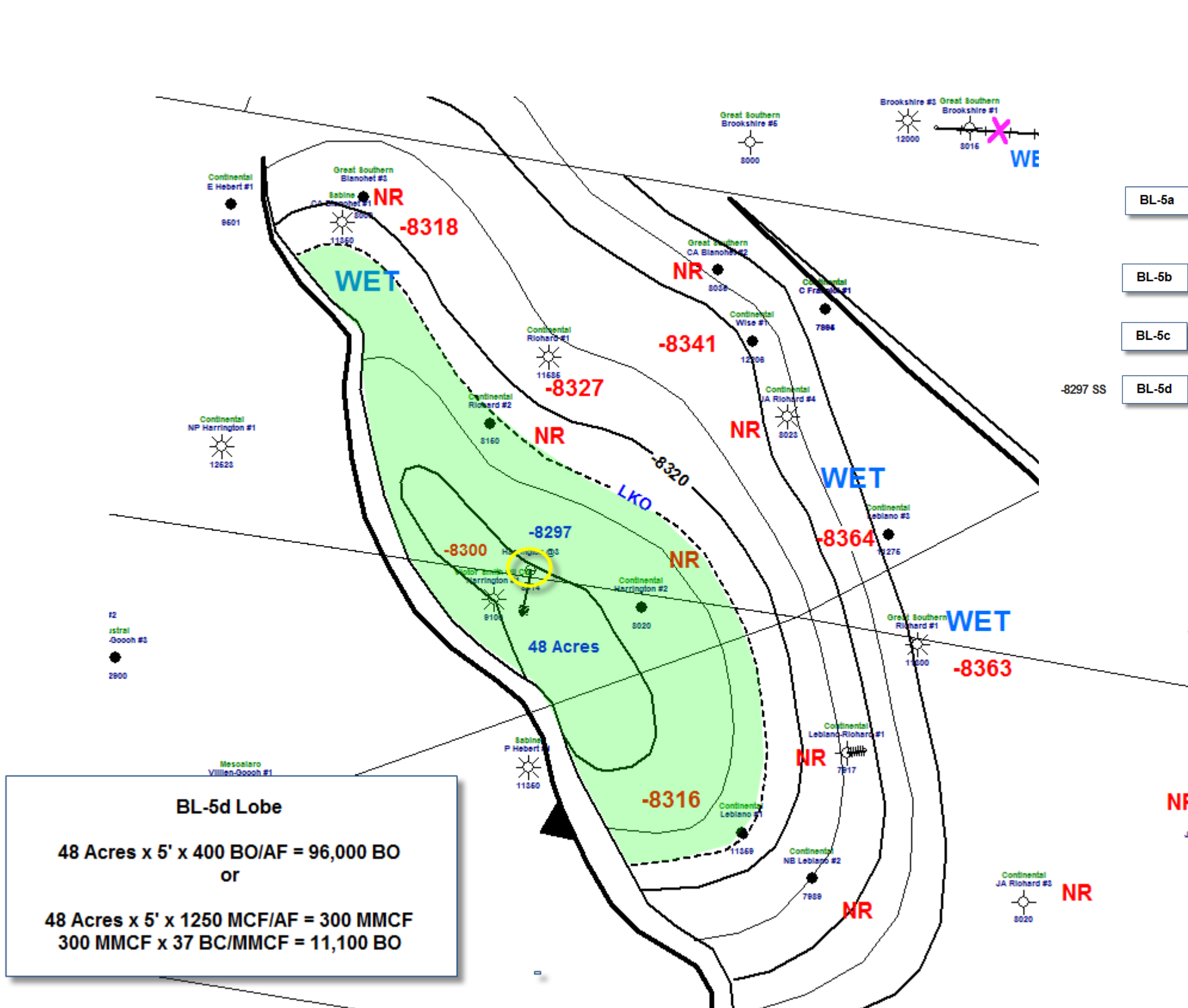
9 Acres x 2' x 600 BO/AF = 10,800 BO

TOTAL ESTIMATED OIL: 177,000 BO



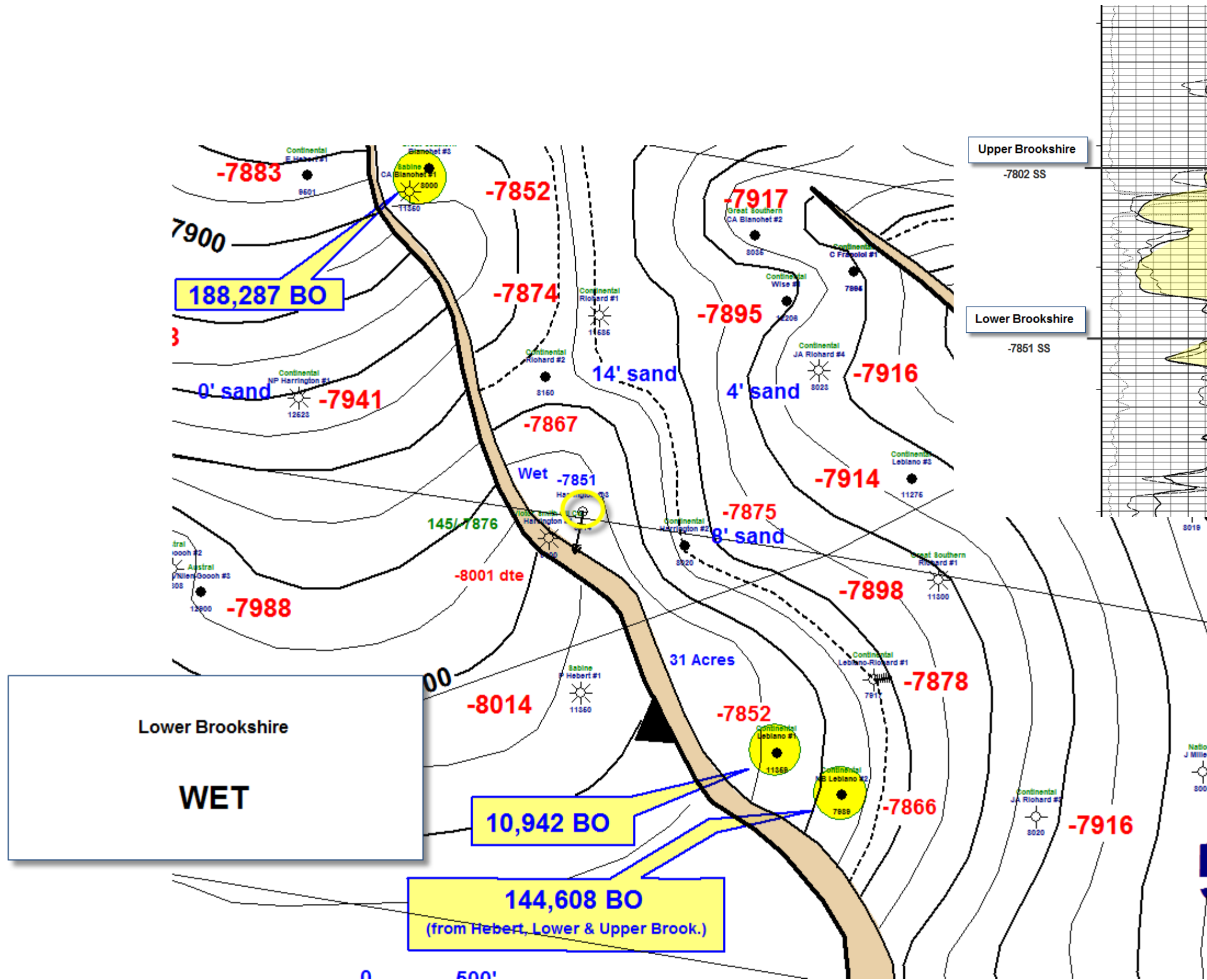






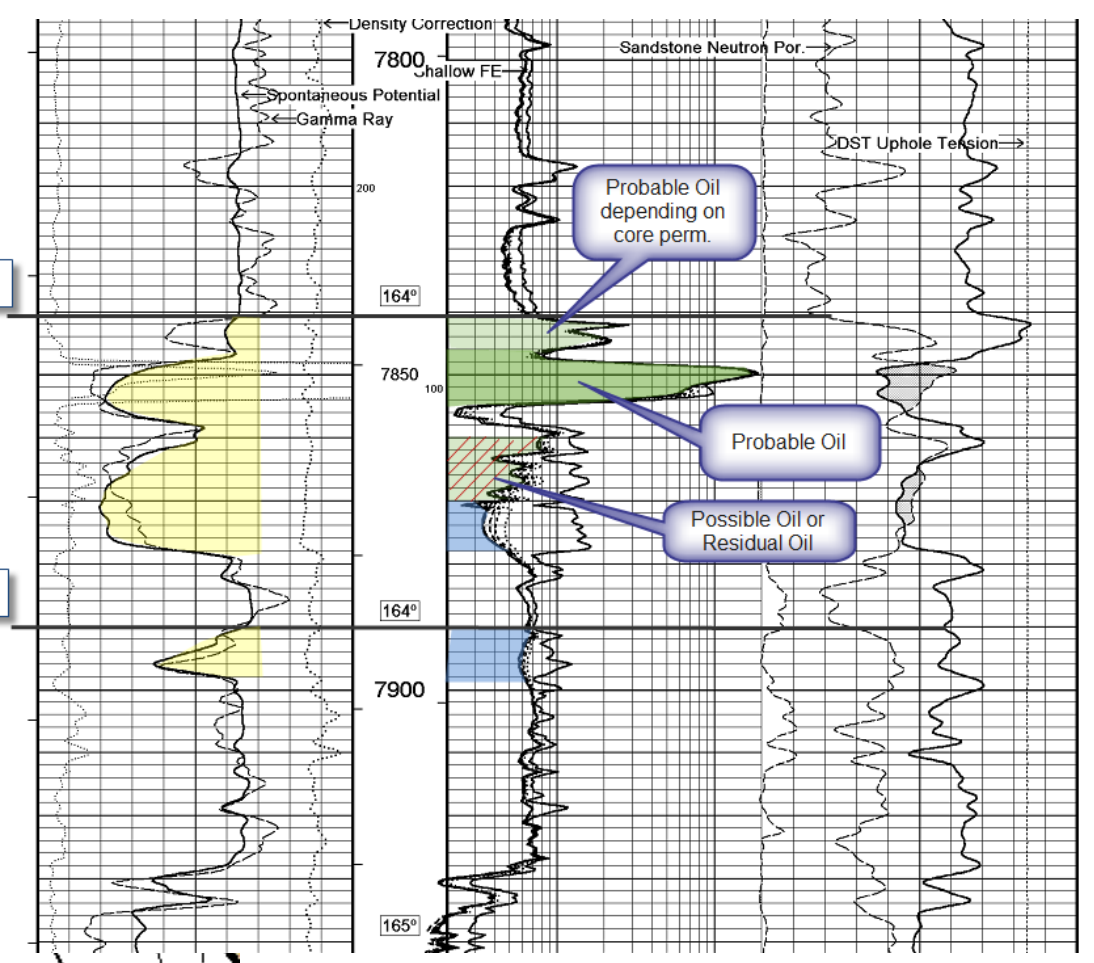
BL-5d Lobe

48 Acres x 5' x 400 BO/AF = 96,000 BO
 or
 48 Acres x 5' x 1250 MCF/AF = 300 MMCF
 300 MMCF x 37 BC/MMCF = 11,100 BO



Upper Brookshire
-7802 SS

Lower Brookshire
-7851 SS



Lower Brookshire
WET

144,608 BO
(from Hebert, Lower & Upper Brook.)

