

**Abbeville Field
Vermilion Parish, LA**

**Smith Production
Lena Meaux #1**

7-29-14

Early this morning we logged the Smith Production Co. Lena Meaux #1 well. We encountered all of objectives sands, however all were noncommercial. Geologically, it appears that the fault is dying out to the south since we encountered only a 35' fault cut in our well just below the 8300' Sand. It appears that the structure is more of a 4 way closure instead of a 3 way closure against this fault. Below is the results for each sand.

8200 Sand: 28 feet low, wet and downthrown to the fault

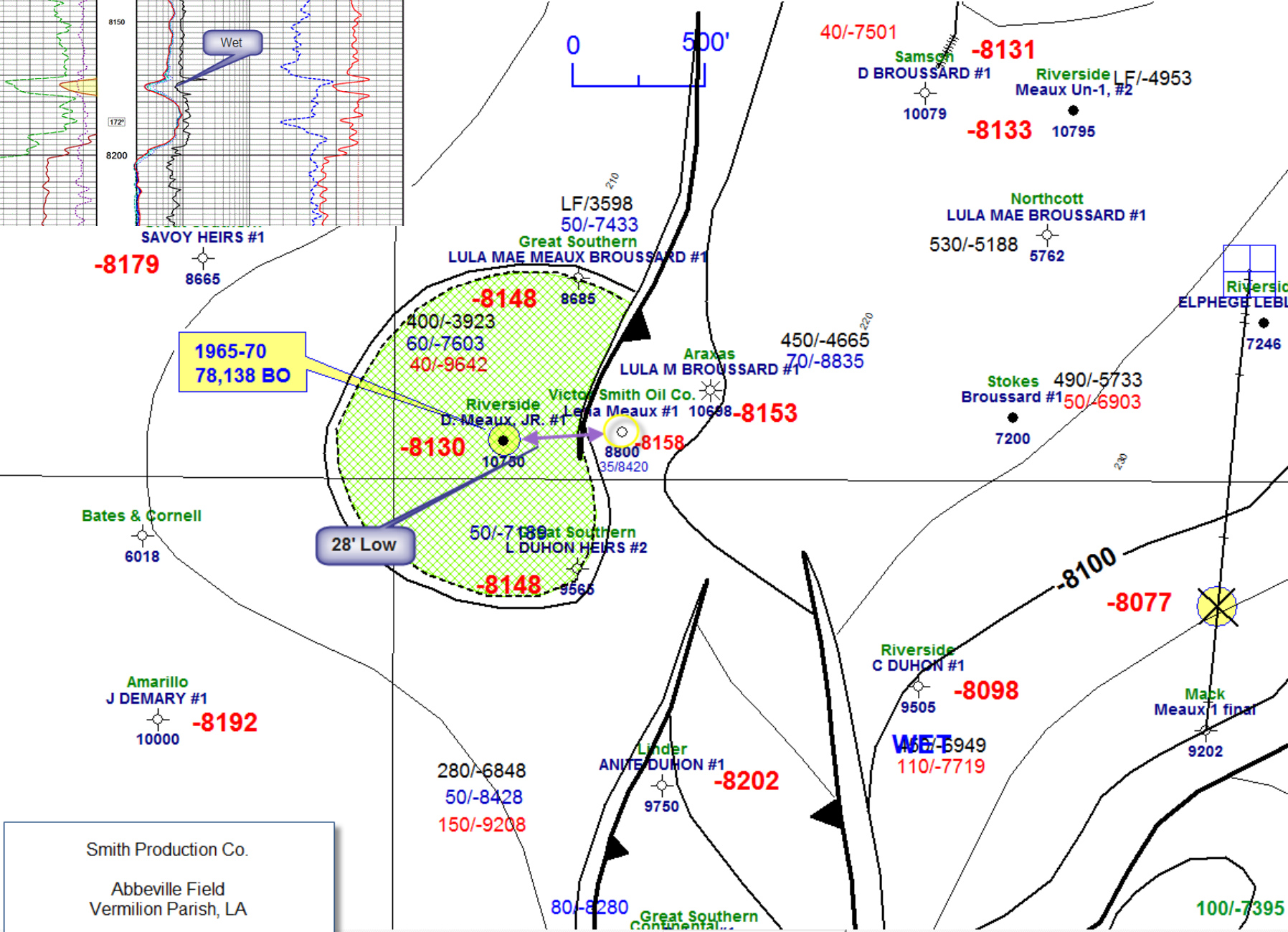
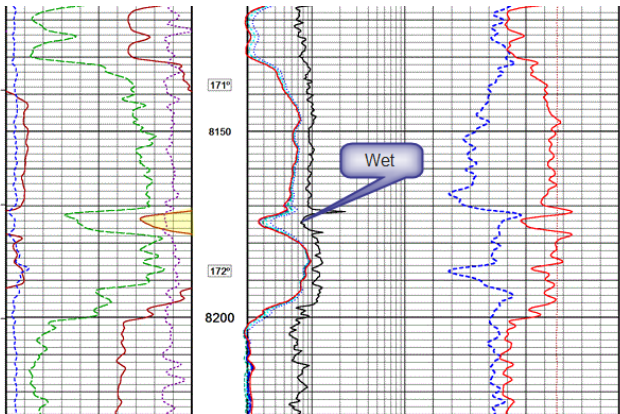
8300 Sand: 39 feet low, wet and downthrown to the fault

8500 Sand: 4 feet low and 2 feet of noncommercial oil, upthrown to a 35' fault cut.

8600 Sand: 18 feet low, wet and also upthrown to the 35' fault cut.

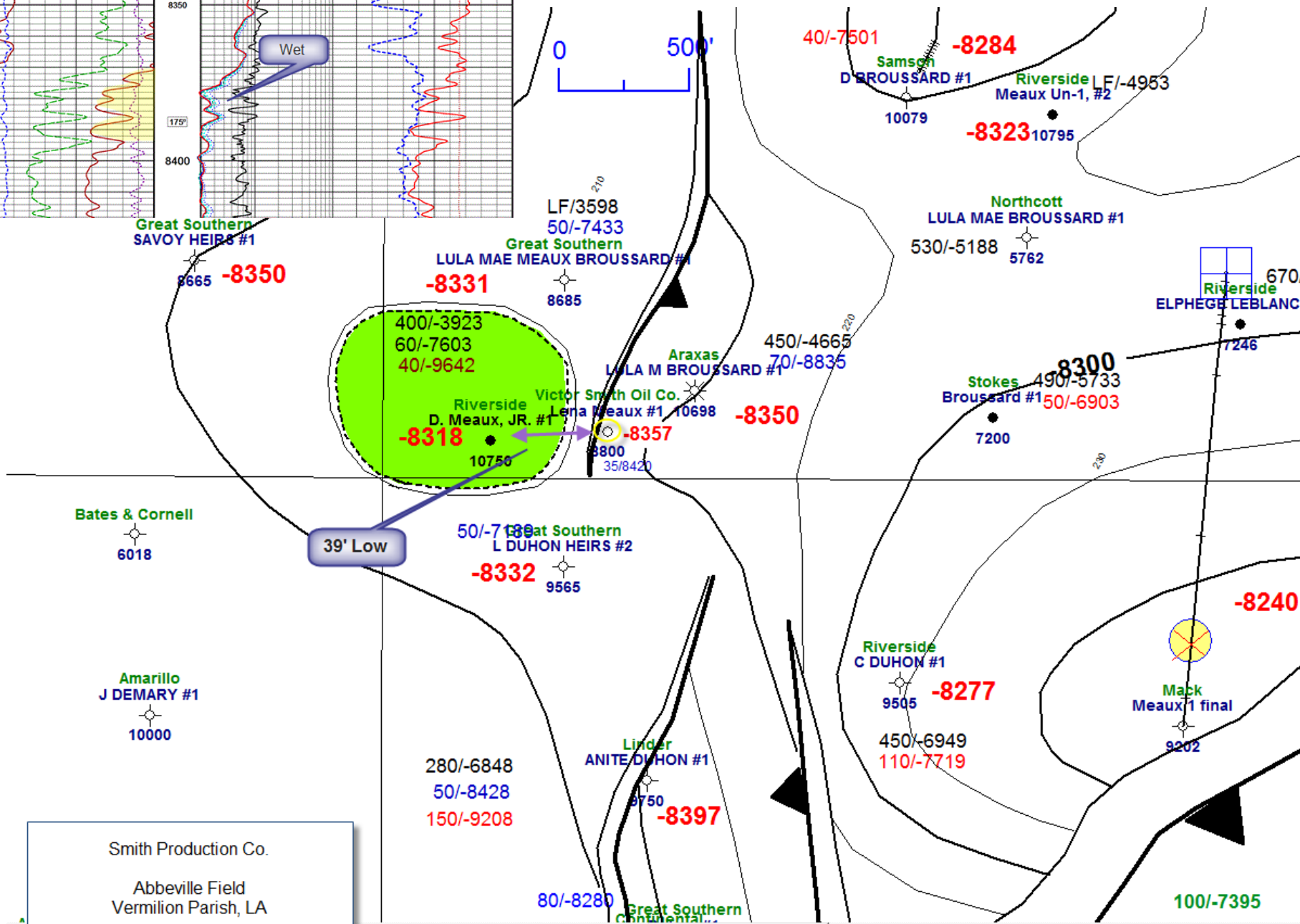
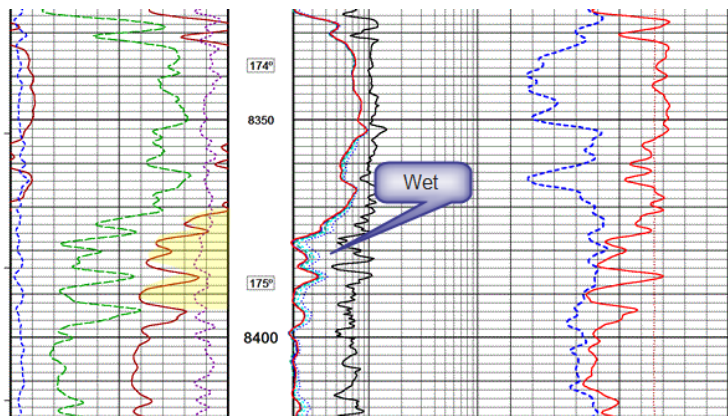
We recommend plugging this well.

8200 Sd



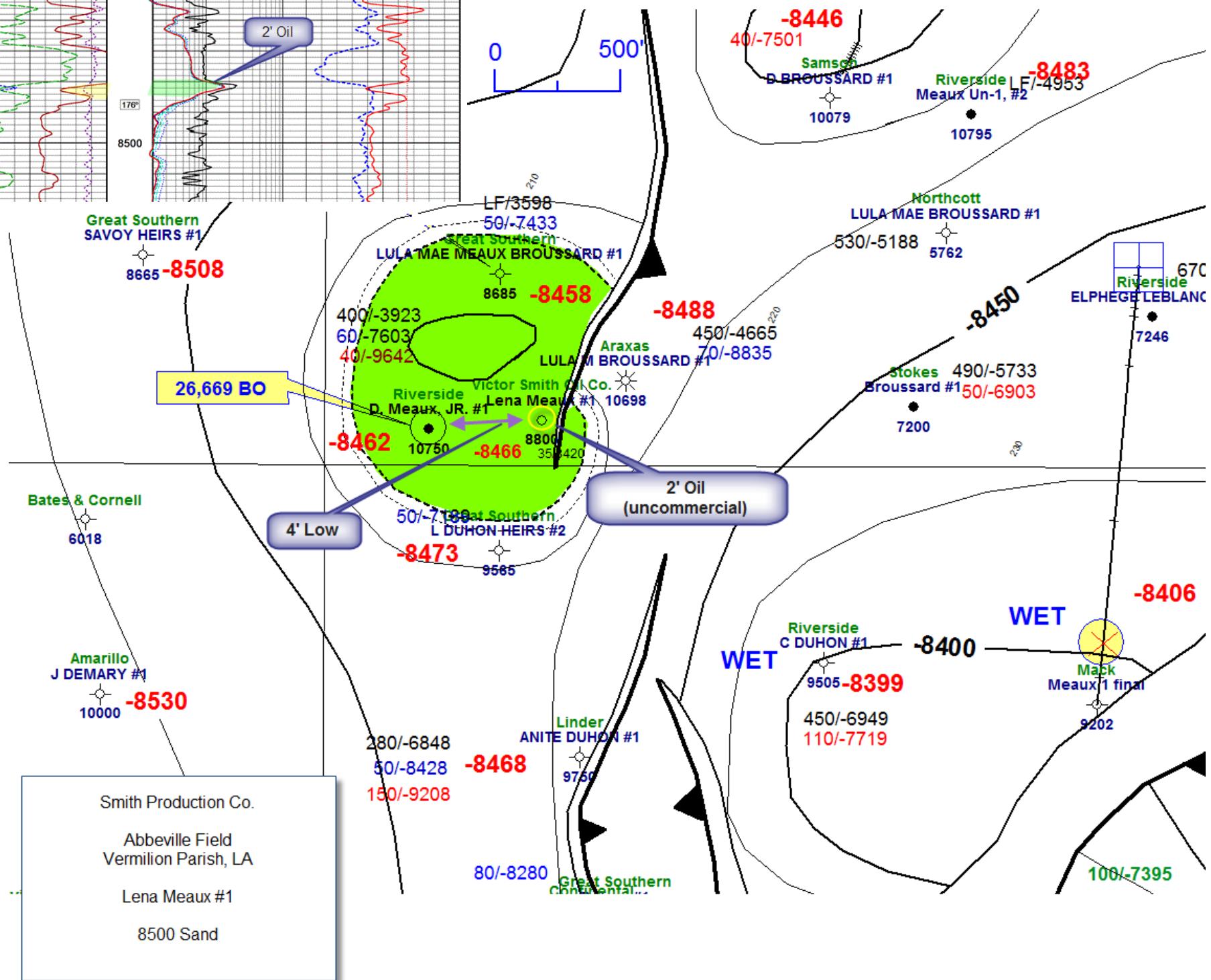
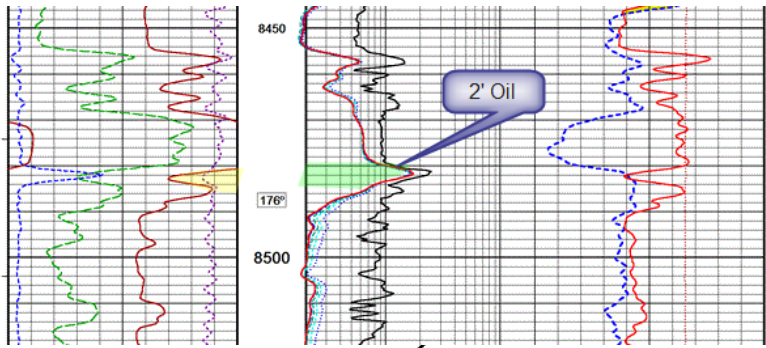
Smith Production Co.
 Abbeville Field
 Vermilion Parish, LA
 Lena Meaux #1
 8200 Sand

8200 Sd



Smith Production Co.
 Abbeville Field
 Vermilion Parish, LA
 Lena Meaux #1
 8300 Sand

8500 Sd



Smith Production Co.
 Abbeville Field
 Vermilion Parish, LA
 Lena Meaux #1
 8500 Sand

Great Southern SAVOY HEIRS #1
 8665 -8508

LF/3598
 50/-7433
 Great Southern LULA MAE MEAUX BROUSSARD #1
 8685 -8458

400/-3923
 60/-7603
 40/-9642

Riverside D. Meaux JR. #1
 10750 -8462

Victor Smith Oil Co. Lena Meaux #1
 10698 -8466

Araxas LULA M BROUSSARD #1
 450/-4665
 70/-8835 -8488

Northcott LULA MAE BROUSSARD #1
 530/-5188
 5762

Stokes Broussard #1
 490/-5733
 50/-6903
 7200

Riverside 670 ELPHEGE LEBLANC
 7246

Bates & Cornell
 6018

Amarillo J DEMARY #1
 10000 -8530

4' Low

Great Southern L DUHON HEIRS #2
 50/-7188
 9585 -8473

2' Oil (uncommercial)

280/-6848
 50/-8428 -8468
 150/-9208

Linder ANITE DUHON #1
 9750

80/-8280
 Great Southern Continental...

Riverside C DUHON #1
 9505 -8399
 450/-6949
 110/-7719

WET

-8400

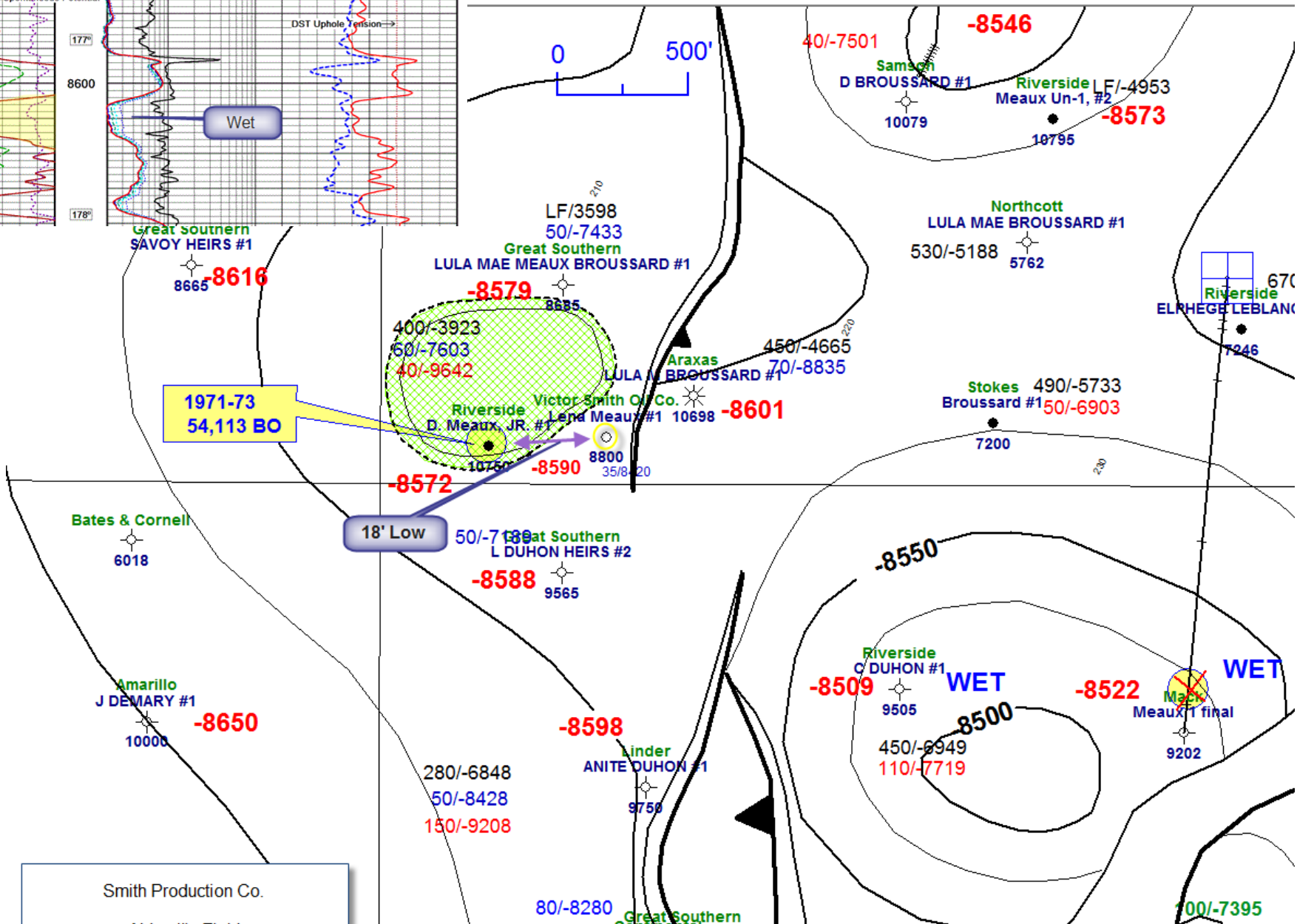
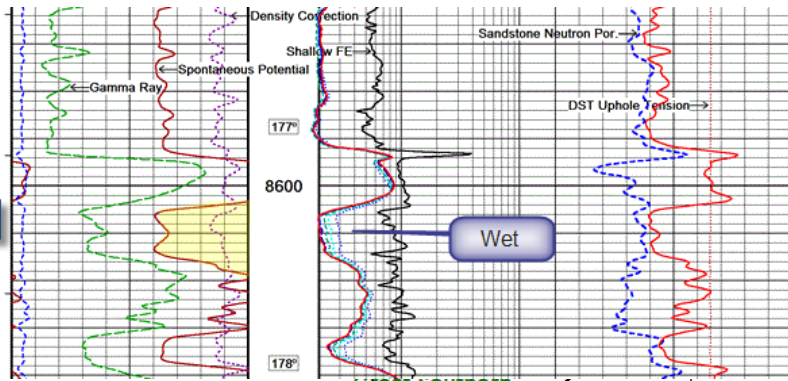
WET

Mack Meaux #1 final
 9202

-8406

100/-7395

8500 Sd



Smith Production Co.
Abbeville Field
Vermilion Parish, LA
Lena Meaux #1
8600 Sand