

S# ~~19338~~ 197469



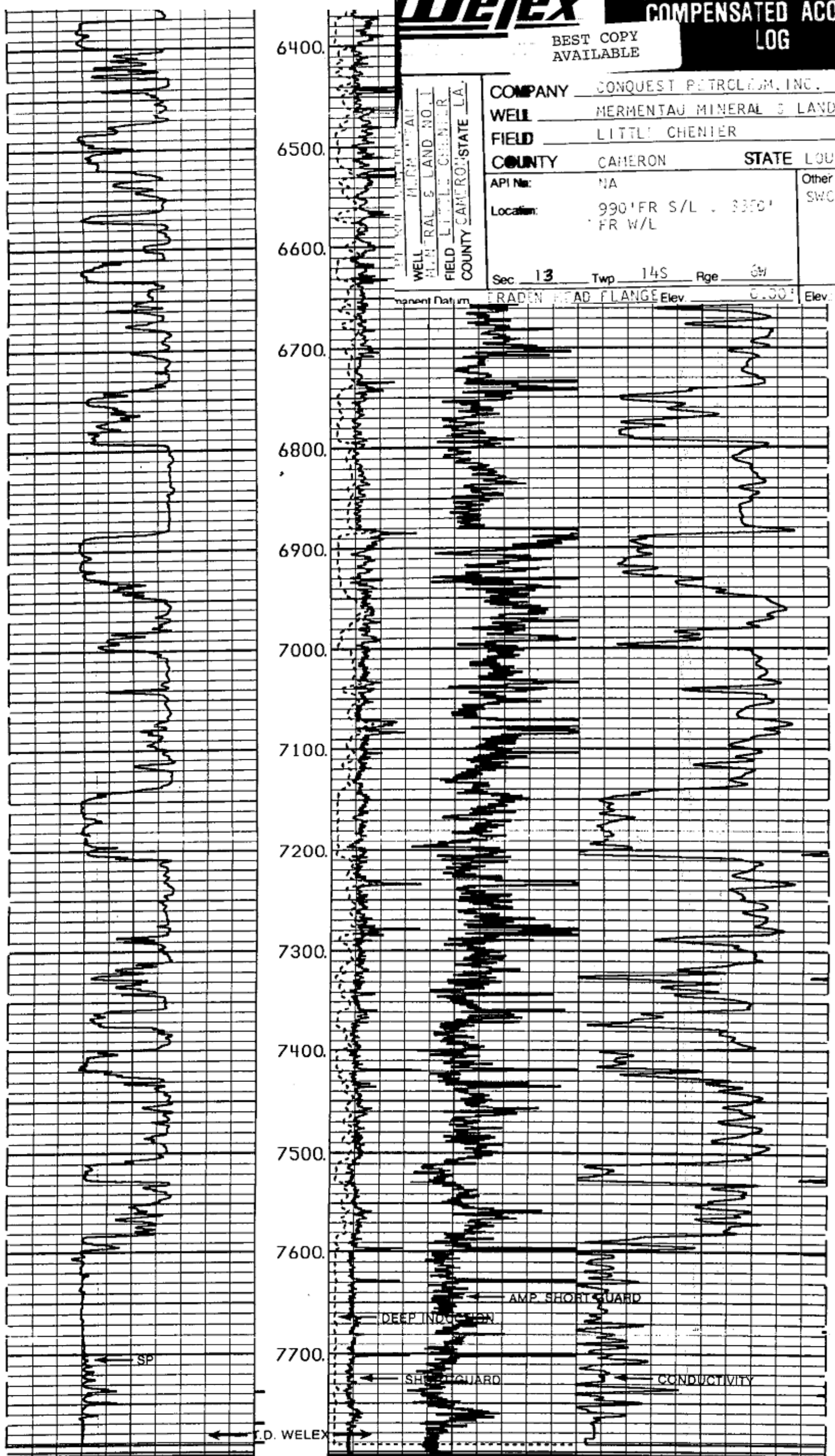
DUAL INDUCTION
COMPENSATED ACOUSTIC
LOG

BEST COPY
AVAILABLE

WELL MERMENAU
MINERAL & LAND NO. 1
FIELD LITTLE CENTER
COUNTY CAMERON STATE LA.

COMPANY	CONQUEST PETROLEUM, INC.		
WELL	MERMENAU MINERAL & LAND NO. 1		
FIELD	LITTLE CENTER		
COUNTY	CAMERON	STATE	LOUISIANA
API No:	NA	Other Services: SWC	
Location:	990' FR S/L . 3350' FR W/L		
Sec	13	Twp	14S Rge 6W

Permanent Datum GRADEN HEAD FLANGE Elev. 6.00' Elev. KB. 16.30'

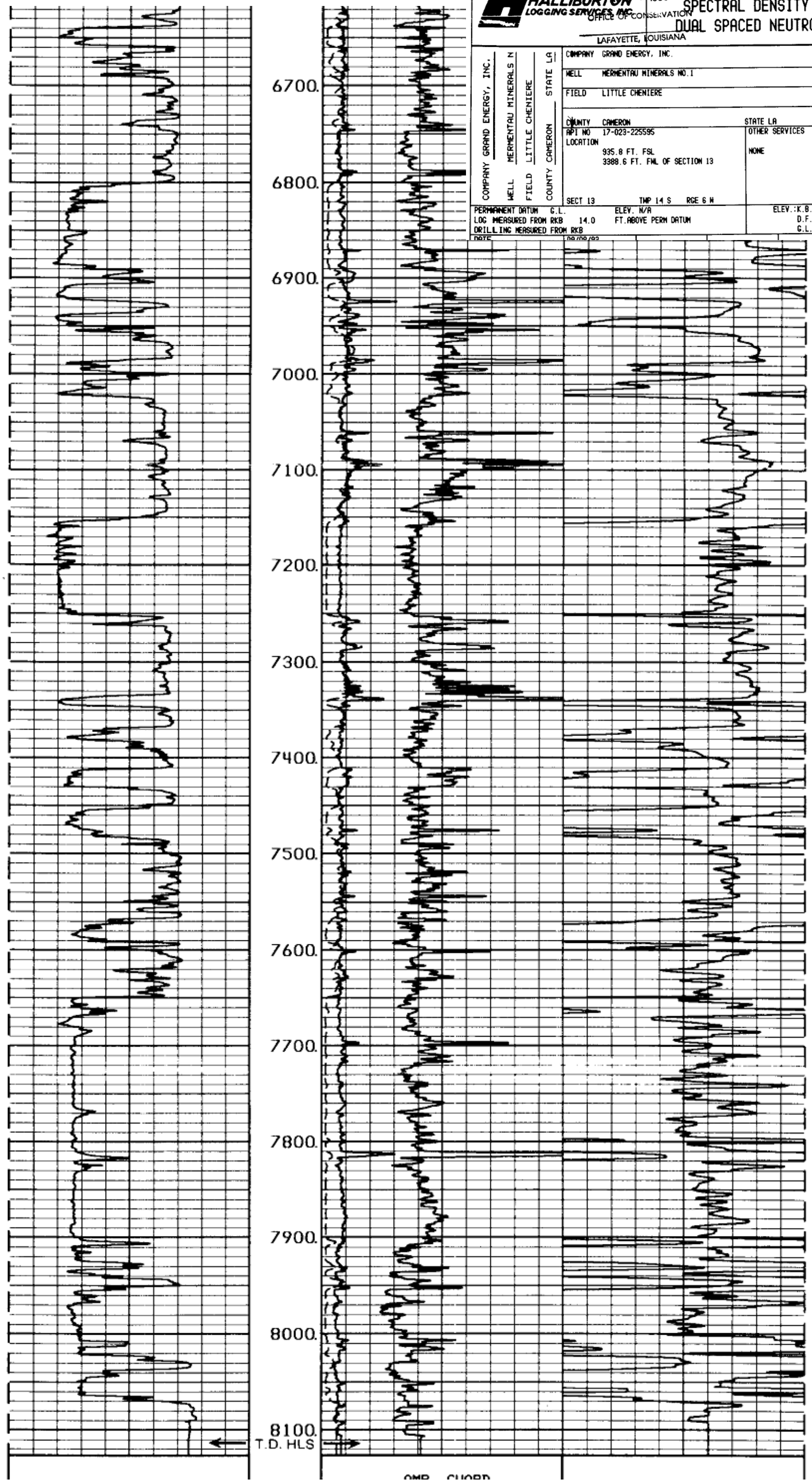


D. WELEX

DEEP
OHMS 100

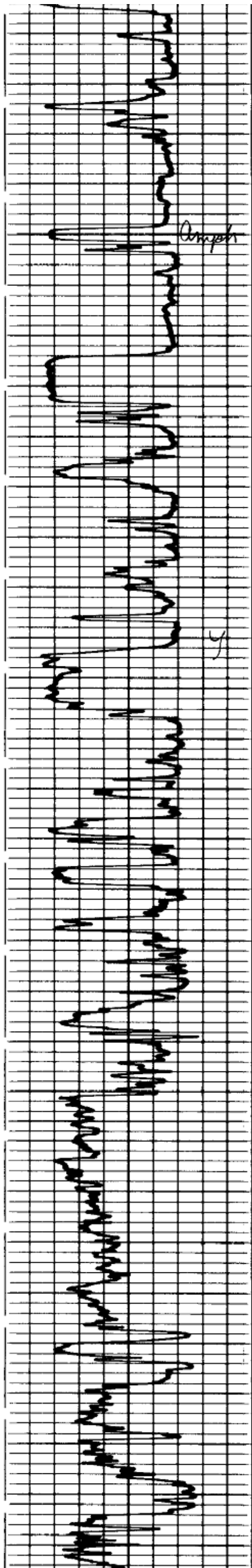
RECEIVED 215824 ✓

HALLIBURTON LOGGING SERVICES, INC.		NOV 1 1993		DUAL INDUCTION SPECTRAL DENSITY DUAL SPACED NEUTRON	
LAFAYETTE, LOUISIANA					
COMPANY GRAND ENERGY, INC.		WELL MERMENEAU MINERALS NO. 1			
WELL MERMENEAU MINERALS N		FIELD LITTLE CHENIERE		STATE LA	
FIELD LITTLE CHENIERE		COUNTY CAMERON		OTHER SERVICES	
COUNTY CAMERON		LOCATION 935.8 FT. FSL 3388.6 FT. FWL OF SECTION 13		NONE	
SECT 13		TWP 14 S		RGE 6 W	
PERMANENT DATUM G.L.		ELEV. N/A		ELEV. :K.B. 14.0	
LOC MEASURED FROM RKB 14.0		FT. ABOVE PERM DATUM		D.F. 13.0	
DRILLING MEASURED FROM RKB				G.L. 0.0	
DATE 08/08/93					

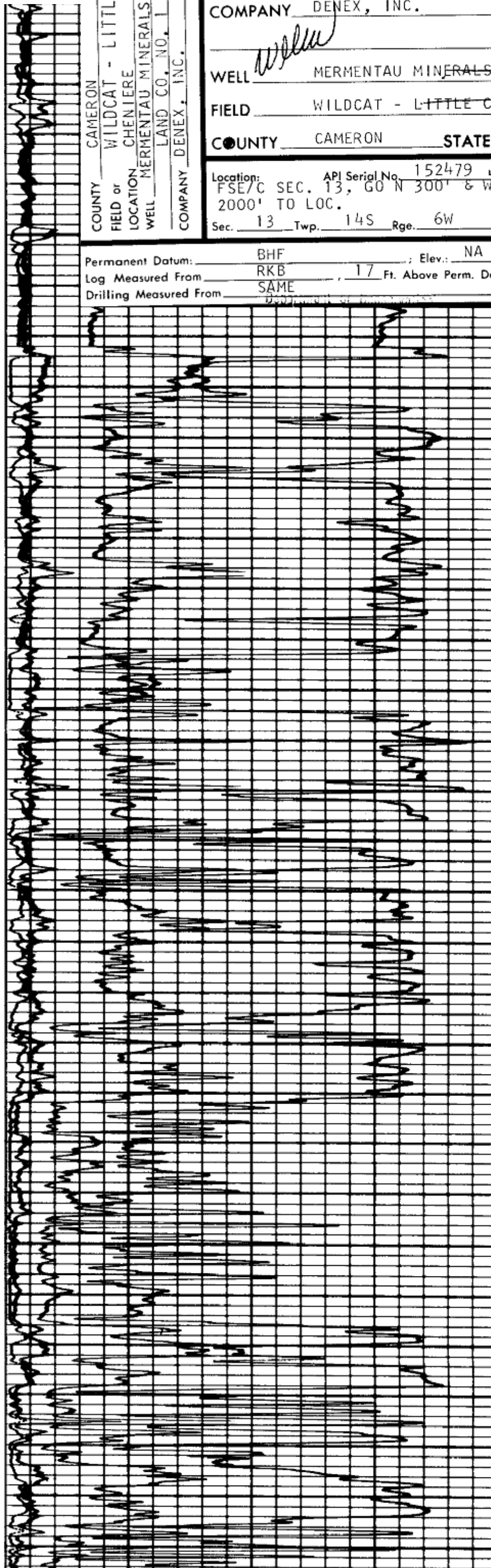


OMP CLORD

Handwritten annotations on the left margin: a large 'A', a '7', and a '9'.



Vertical axis labels for the left plot: 6600, 6700, 6800, 6900, 7000, 7100, 7200, 7300, 7400, 7500, 7600, 7700, 7800, 7900, 8000, 8100.



COUNTY CAMERON
 FIELD or WILDCAT - LITTLE
 LOCATION CHENTIERE
 WELL MERMENTAU MINERALS
 LAND CO., NO. 1
 COMPANY DENEX, INC.

COMPANY DENEX, INC. ✓

WELL *Weller* MERMENTAU MINERALS LAND CO. NO. 1

FIELD WILDCAT - LITTLE CHENTIERE

COUNTY CAMERON STATE LOUISIANA

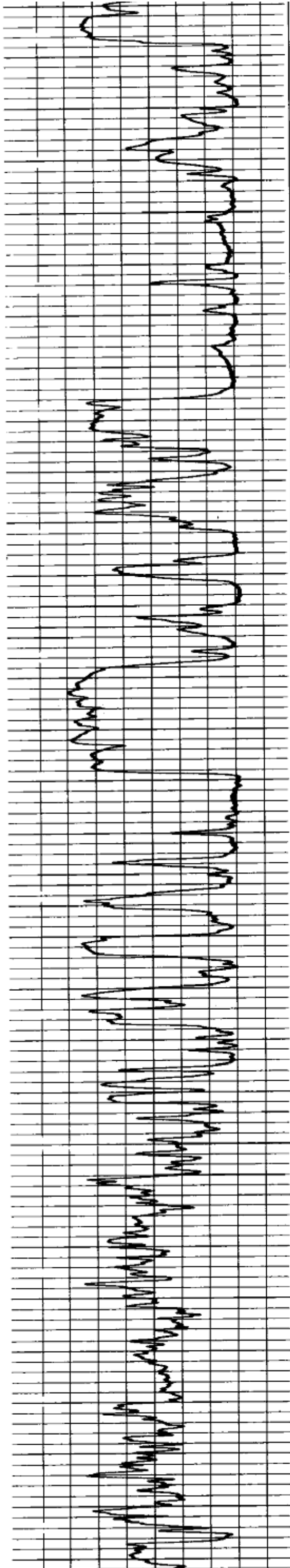
Location: API Serial No. 152479 ✓
 FSE/C SEC. 13, GO N 300' & W
 2000' TO LOC.
 Sec. 13 Twp. 14S Rge. 6W

Other Services:

NONE

Permanent Datum: BHF ; Elev.: NA
 Log Measured From RKB , 17 Ft. Above Perm. Datum
 Drilling Measured From SAME

Elev.: K.B. NA
 D.F. NA
 G.L. NA



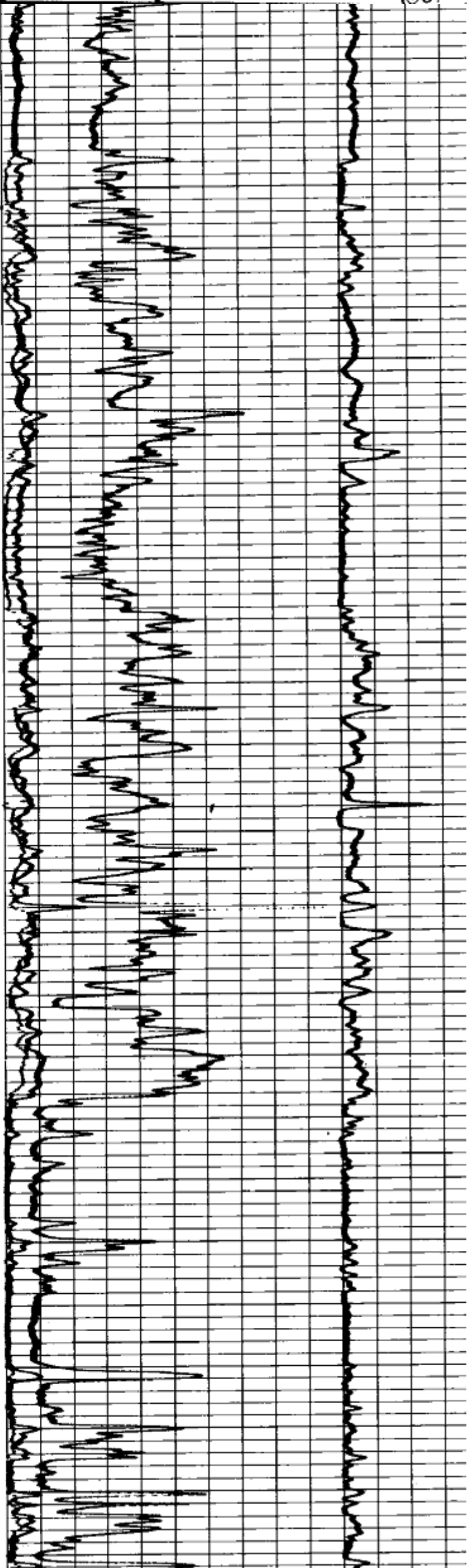
6600 6700 6800 6900 7000 7100 7200 7300 7400 7500 7600 7700 7800 7900 8000


COUNTY CAMERON
 FIELD or WILDCAT
 LOCATION SEC 18-14S-5W
 WELLMERMENTAU MINERAL &
 LAND COMPANY WELL
 COMPANY KERR-MC GEE OIL
 INDUSTRIES, INC.

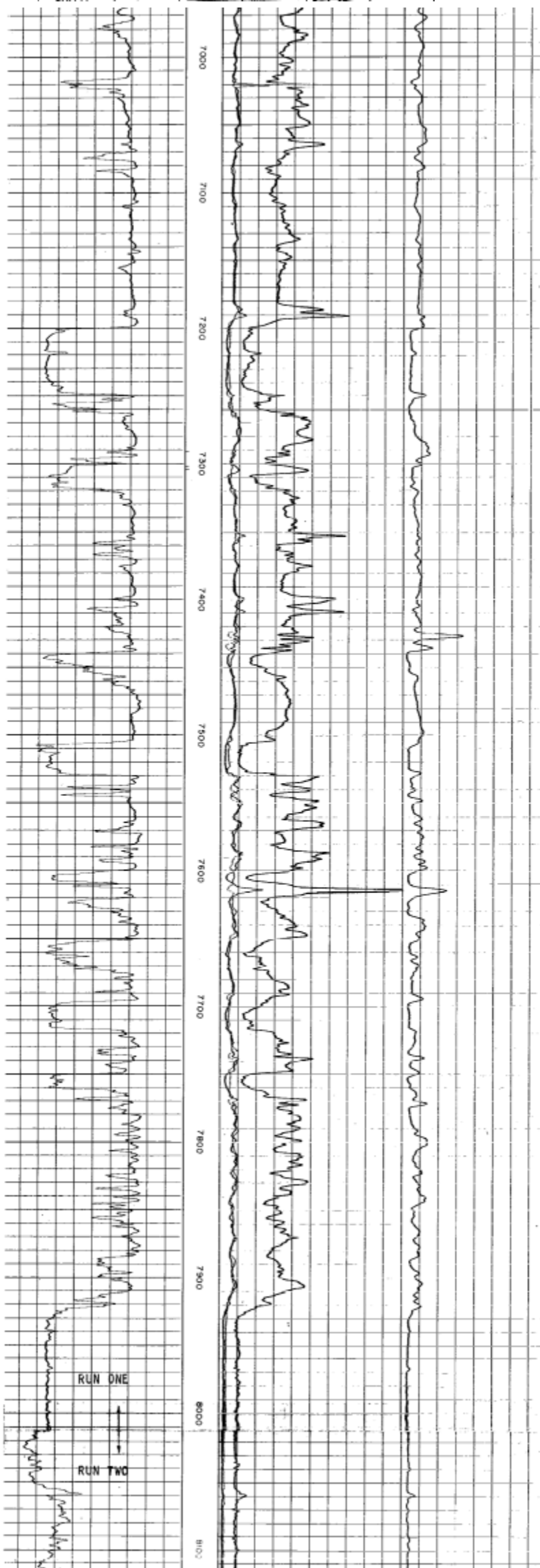
COMPANY KERR-MC GEE
 INDUSTRIES, INC.
 WELL MERMENTAU MINERAL
 LAND COMPANY WELL
 FIELD WILDCAT
 LOCATION SEC 18-14S-5W
 COUNTY CAMERON
 STATE LOUISIANA

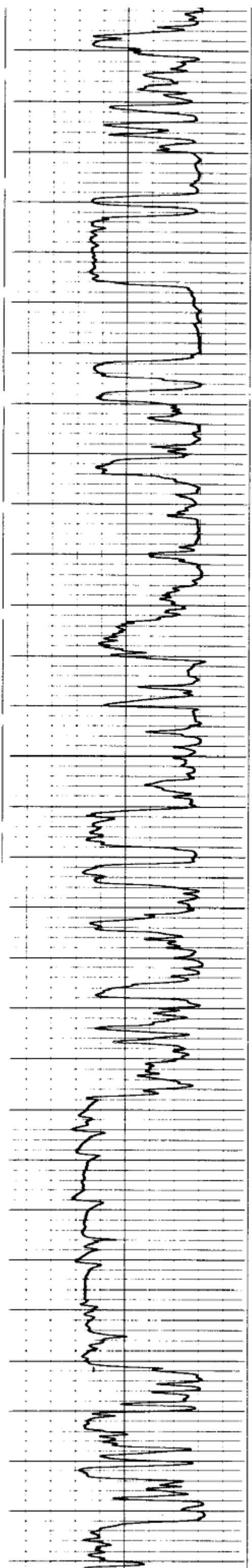
Other Surveys
 CST
 Location of Well
 COR SEC 18
 560' E
 TO LOC.
 Spudded In: 7-30-60
 Permit No. 65003
 Elevation: D.F.:
 K.B.:
 or G.L.:
 DEPARTMENT OF MINERALS
 CHARLES No.

RECEIVED
 OCT 12 1960
 DEPARTMENT OF MINERALS
 CHARLES

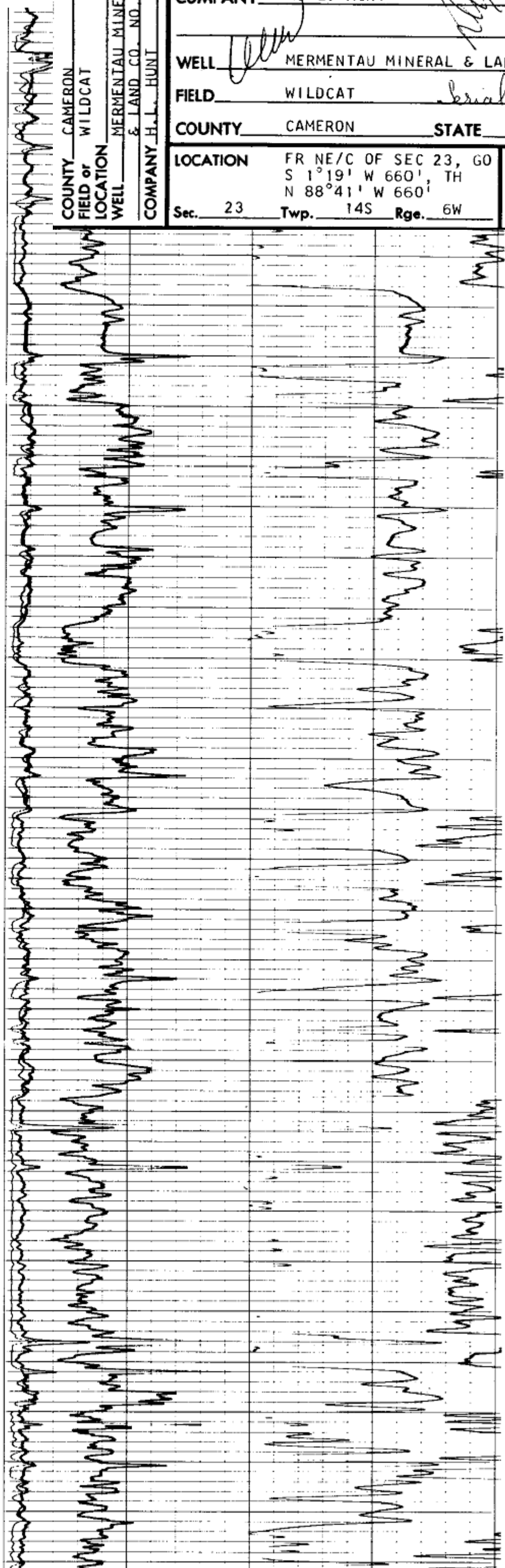


SCHLUMBERGER WELL SURVEYING CORPORATION DALLAS, TEXAS		
 <i>Electrical Log</i>		
COUNTY CAMERON FIELD or LOCATION BIG MOUTH BAYOU WELL MERMENTEAU MINERAL # 2 COMPANY UNION OIL COMPANY OF CALIFORNIA	COMPANY UNION OIL COMPANY OF CALIFORNIA	Location of Well 1650 FSL 330 A.W.L.
	WELL MERMENTEAU	<input type="checkbox"/>
	MINERAL # 2	60601
	FIELD <i>W</i> BIG MOUTH BAYOU	
	LOCATION <i>NA 18-165-601</i>	
COUNTY CAMERON <small>NEW 1956</small> STATE LOUISIANA <small>DEPARTMENT OF MINERALS</small>		Elevation: D.F. K.B. or G.L.
RECEIVED <small>APR 1956</small>		FILING No.





6700
6800
6900
7000
7100
7200
7300
7400
7500
7600
7700
7800
7900
8000
8100
8200



COUNTY CAMERON
FIELD OF WILDCAT
LOCATION
WELL MERMENTAU MINERAL & LAND CO. NO. 1
COMPANY H.L. HUNT

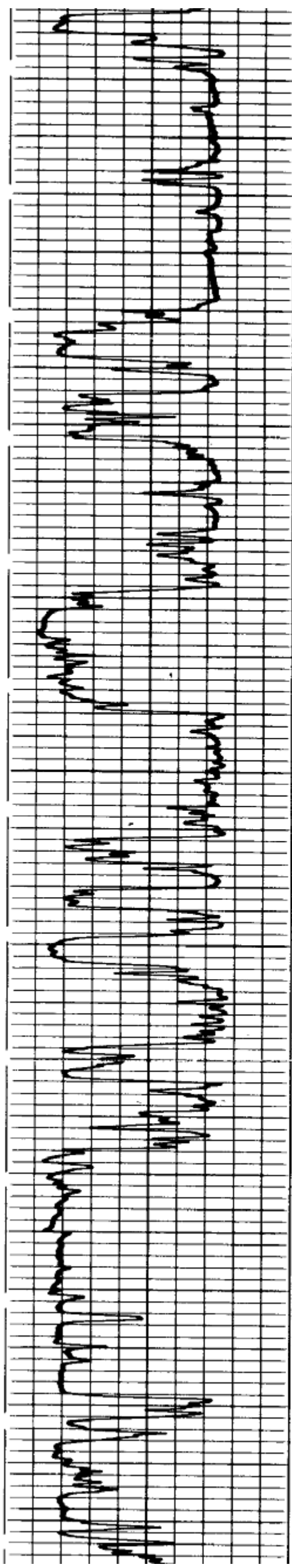
COMPANY	H. L. HUNT	
WELL	MERMENTAU MINERAL & LAND COMPANY #1	
FIELD	WILDCAT	Serial #122701
COUNTY	CAMERON	STATE LOUISIANA
LOCATION	FR NE/C OF SEC 23, GO S 1°19' W 660', TH N 88°41' W 660'	Other Services: SLC, CDM, CDD-H, ST
Sec.	23	Twp. 14S Rge. 6W

COUNTY CAMERON
 FIELD WILDCAT - LITTLE
 LOCATION CHENIER
 WELL J. P. BOUDOIN NO. 1
 COMPANY DENEX, INC.

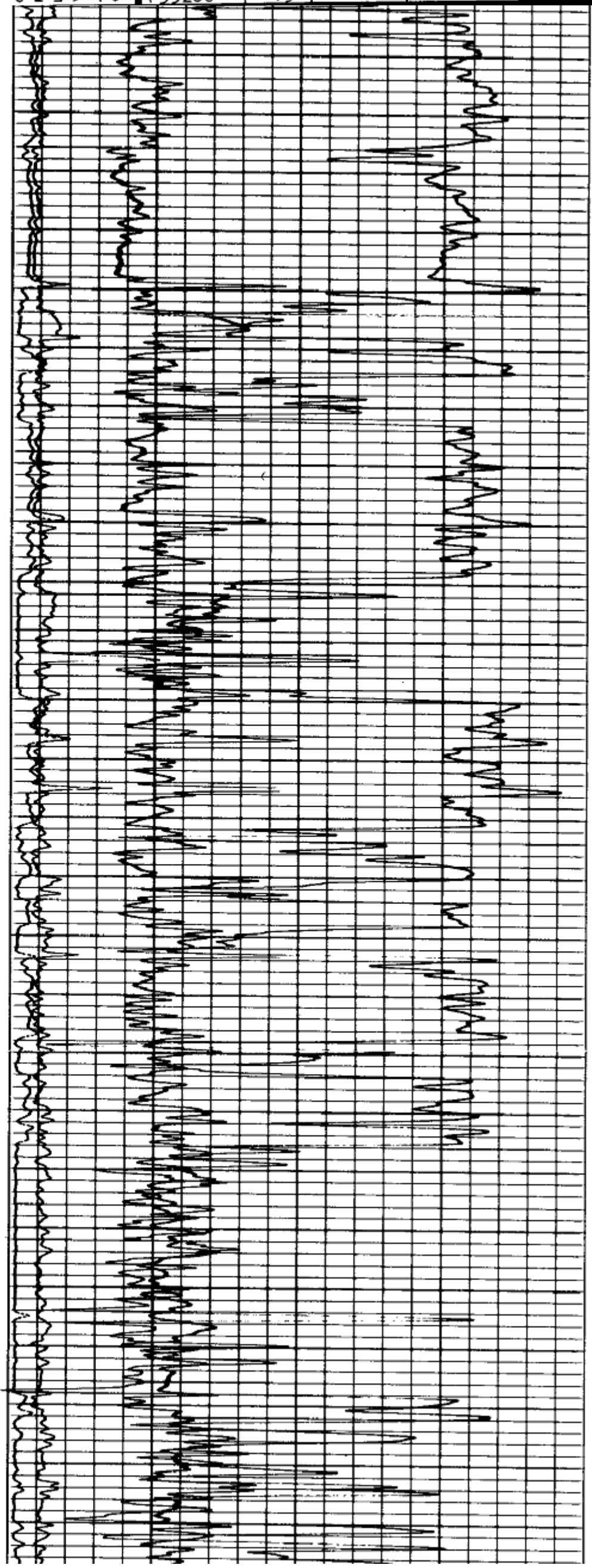
COMPANY DENEX, INC. *Watson Oil Corporation* ✓
 WELL J. P. BOUDOIN NO. 1
 FIELD WILDCAT - LITTLE CHENIERE
 COUNTY CAMERON STATE LOUISIANA

LOCATION FSE/C SEC. 13, GO N 2500' & W 1900' TO LOC.
 API SERIAL NO. 155268 ✓ SEC. 13 TWP 14S RANGE 6W

Other Services:
 ST,
 HDT



1900
7000
7100
7200
7300
7400
7500
7600
7700
7800
7900
8000
8100
8200



COUNTY CAMERON FIELD LITTLE CHENIER LOCATION A. NUNEZ NO. 1 WELL COMPANY WATSON OIL CORPORATION	COMPANY WATSON OIL CORPORATION			
	B2991A			
	WELL A. NUNEZ NO. 1			
	FIELD LITTLE CHENIER			
COUNTY CAMERON		STATE LOUISIANA		
LOCATION FNW/C SEC. 13. GO S 2364' & E 1419' TO LOC.			Other Services: FDC/CNL/GR, CYBERLOOK, ST. HDT	
API SERIAL NO	SEC	TWP		RANGE
15772	13	14S	6W	

