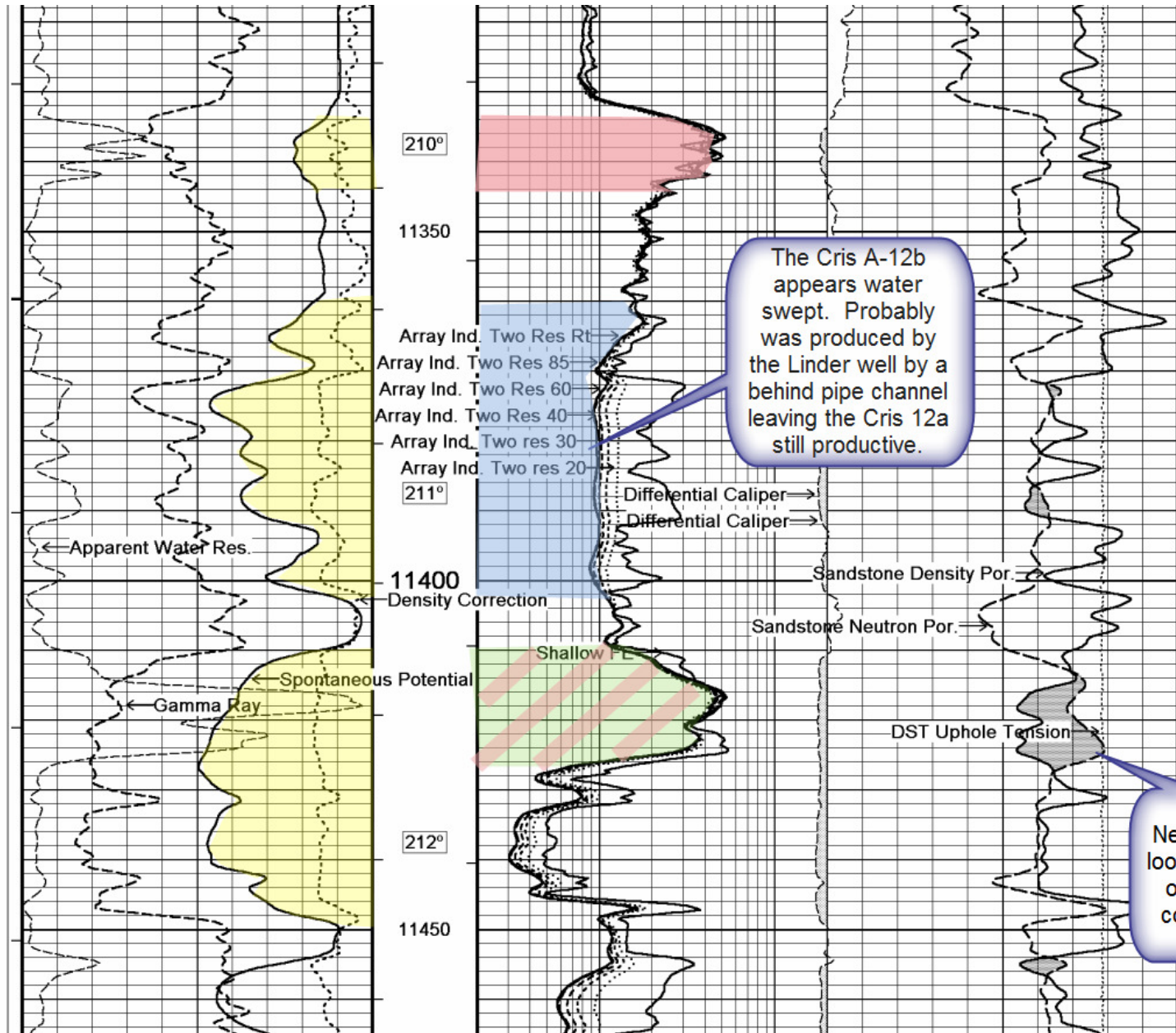


Cris A-12a
11332 MD
-11191 SS

Cris A-12b

Cris A-12c
11410 MD
-11254 SS



The Cris A-12b appears water swept. Probably was produced by the Linder well by a behind pipe channel leaving the Cris 12a still productive.

Neutron curve looks more like oil, or Gas-condensate.

Cris A-10
11184 MD
-11063 SS

