

# Schlumberger

Company: Meridian Resource Corp.

Well: Lake Arthur Reclamation Co. #1  
 Perreau Island  
 Cameron State: Louisiana

**ARRAY INDUCTION  
 COMPENSATED NEUTRON  
 LITHO DENSITY  
 FINAL COMPOSITE [5"=100']**

Well: Lake Arthur Reclamation Co. #1  
 Company: Meridian Resource Corp.

LOCATION		N 49 Deg 13' 18" W - 2.942.82' from USGS " Grand in Sec. 26		Elev.: K.B. 36.3 ft G.L. 0 ft D.F. 36.3 ft	
Permanent Datum:		Mean Sea Level		Elev.: 0 ft	
Log Measured From		Drill Floor		36.3 ft above Perm Datum	
Drilling Measured From		Drill Floor			
API Serial No. 17-023-22963		Section: 26	Township 12S	Range: 4W	

Date	16-Oct-2006	14-Nov-2006	27-Nov-2006	
Core	One	Two	Three	
Core Length	11220 ft	14600 ft	16400 ft	
Core Depth	11230 ft	14610 ft	16405 ft	
Log Interval	11222 ft	14602 ft	16396 ft	
Log Interval	3498 ft	11223 ft	14608 ft	
Filter Size @ Depth	13 375 in @ 3500 ft	9 625 in @ 11220 ft	7.625 in @ 14600 ft	
Schlumberger	3498 ft	11229 ft	14608 ft	
Filter In Hole	12.250 in	8.500 in	6.500 in	
	Water Based Mud		Water Based Mud	
Viscosity	11.7 lbm/gal	45 s	17.3 lbm/gal	52 s
PH	8.4 cm3	10.3	3.6 cm3	11.5
Filter Sample	Flowline	Mud Pit	Mud Pit	
Measured Temperature	0.750 ohm.m @ 109 degF	0.781 ohm.m @ 100 degF	0.680 ohm.m @ 77 degF	
Measured Temperature	0.670 ohm.m @ 109 degF	0.601 ohm.m @ 100 degF	0.578 ohm.m @ 77 degF	
Measured Temperature	1.110 ohm.m @ 109 degF	1.190 ohm.m @ 100 degF	0.952 ohm.m @ 77 degF	
RMF	Calculated	Calculated	Calculated	
RMF @ MRT	0.458 @ 193	0.388 @ 193	0.319 @ 255	
Recorded Temperatures	193 degF	255 degF	303 degF	
Time Stopped	Time: Oct-2006	18:00	14-Nov-2006	10:00
Time Bottom	Time: Oct-2006	8:30	14-Nov-2006	23:36

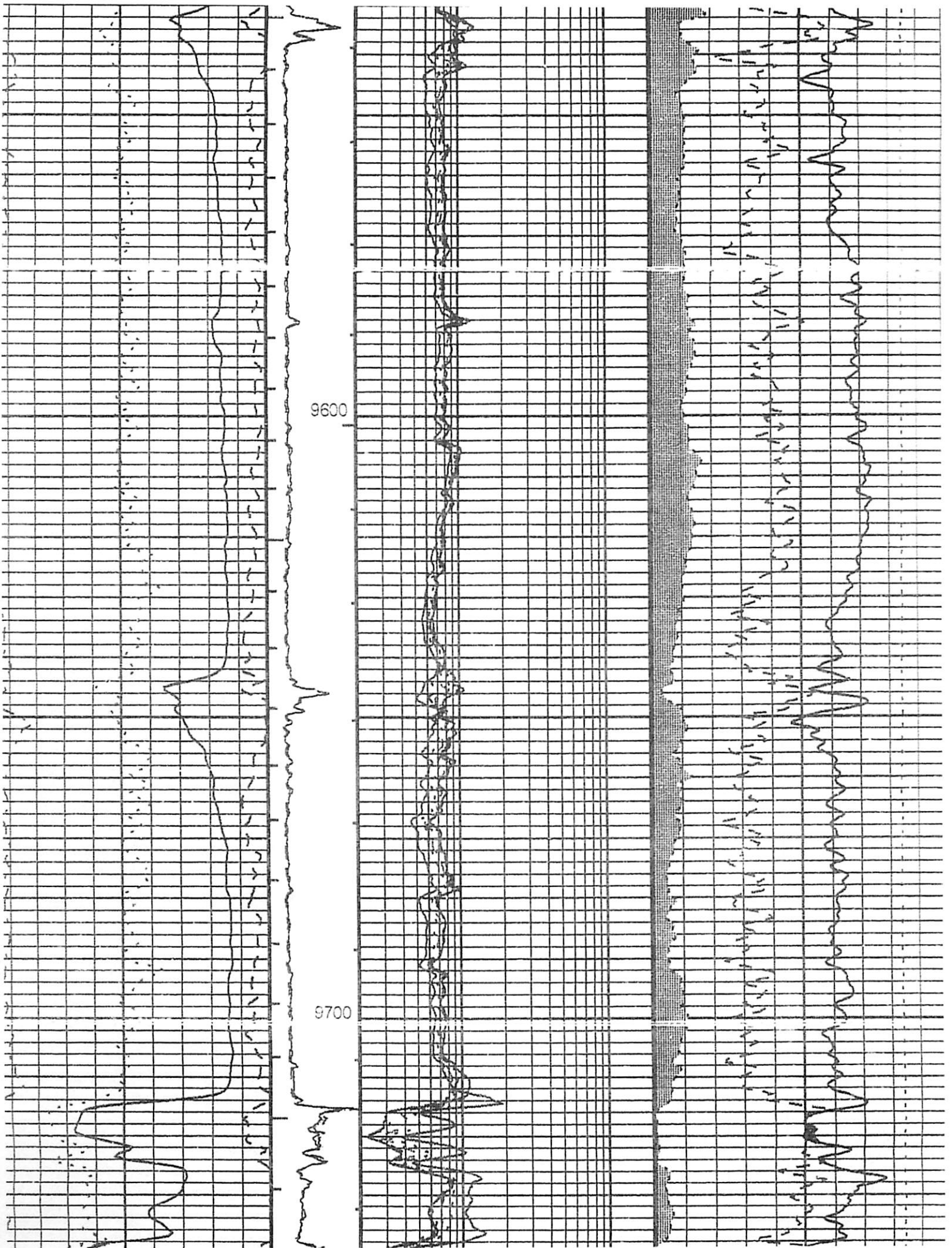
## DEPTH SUMMARY LISTING

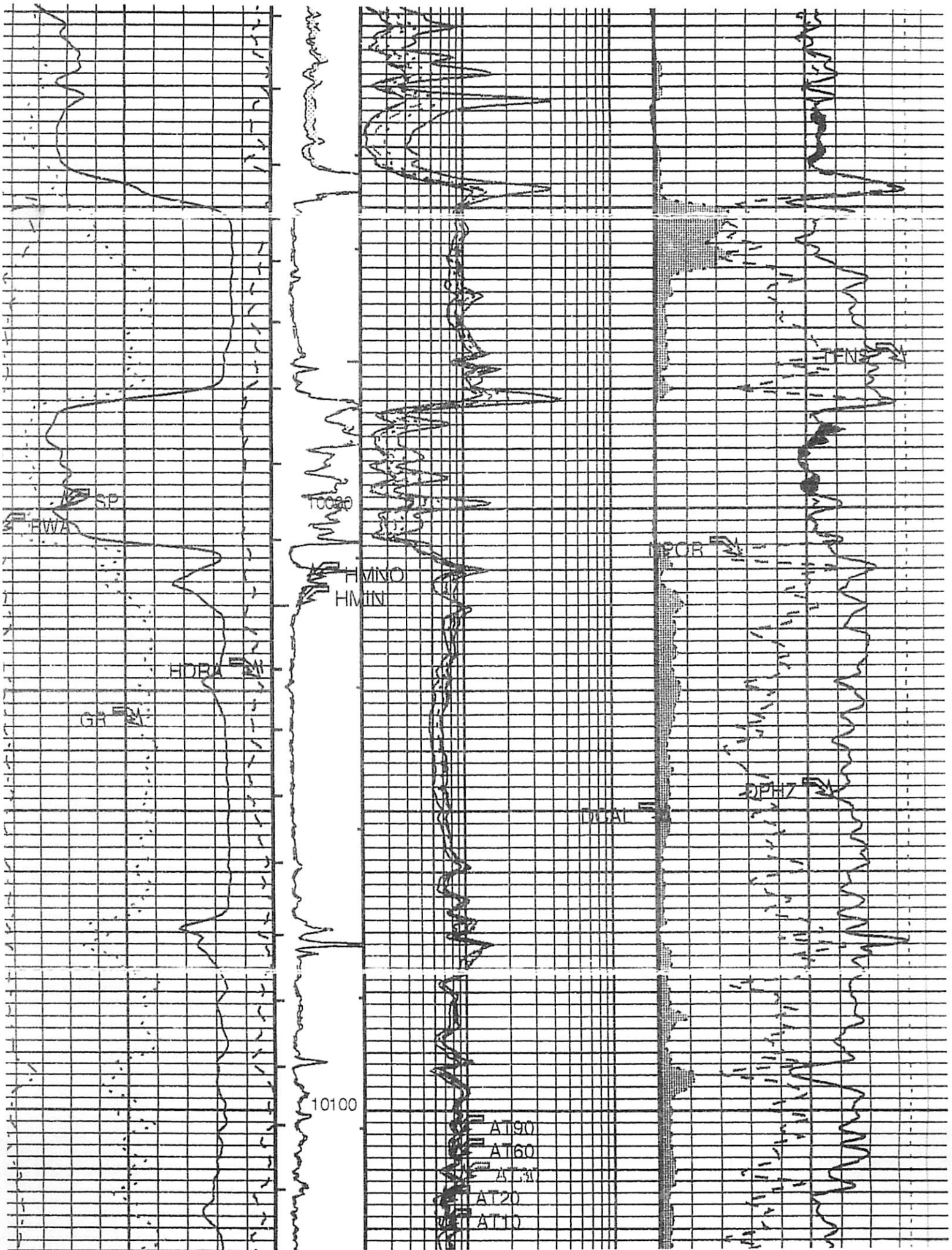
**JN1**

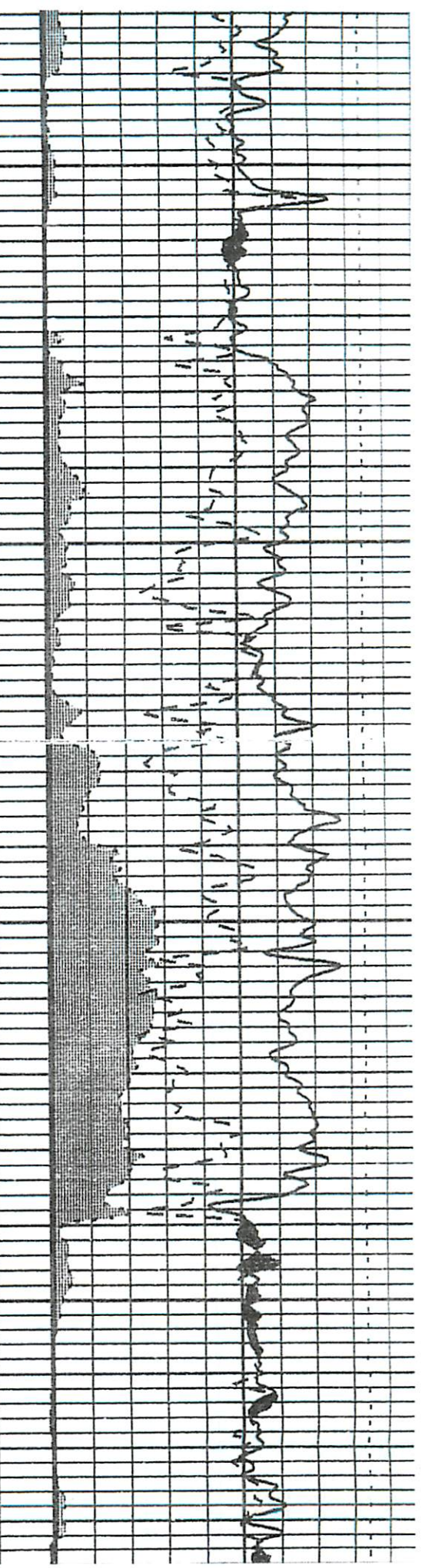
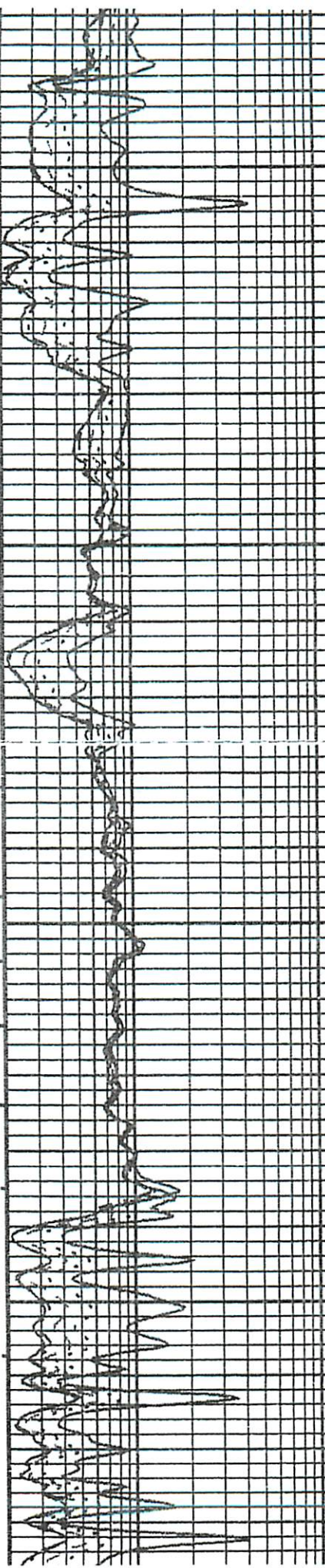
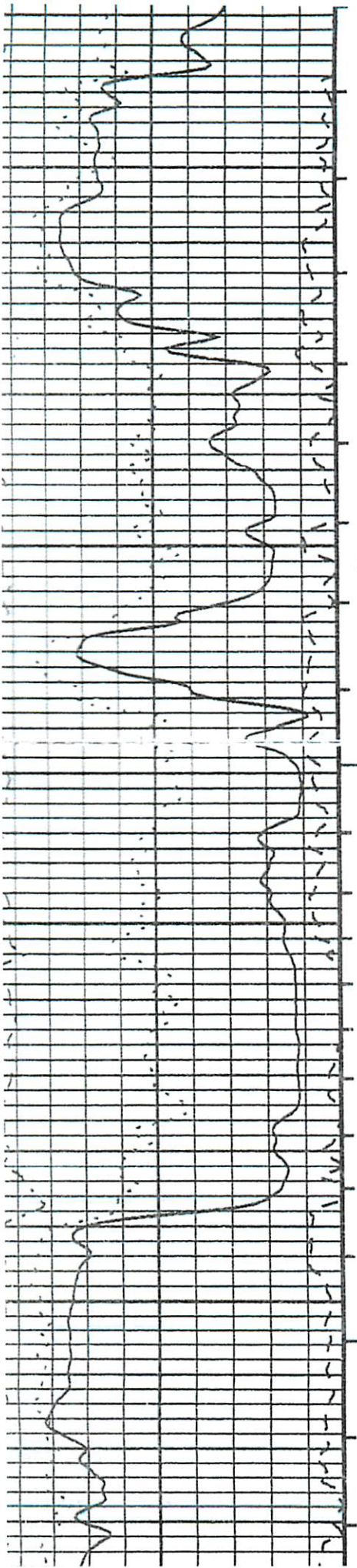
Date Created: 16-OCT-2006 11:27:03

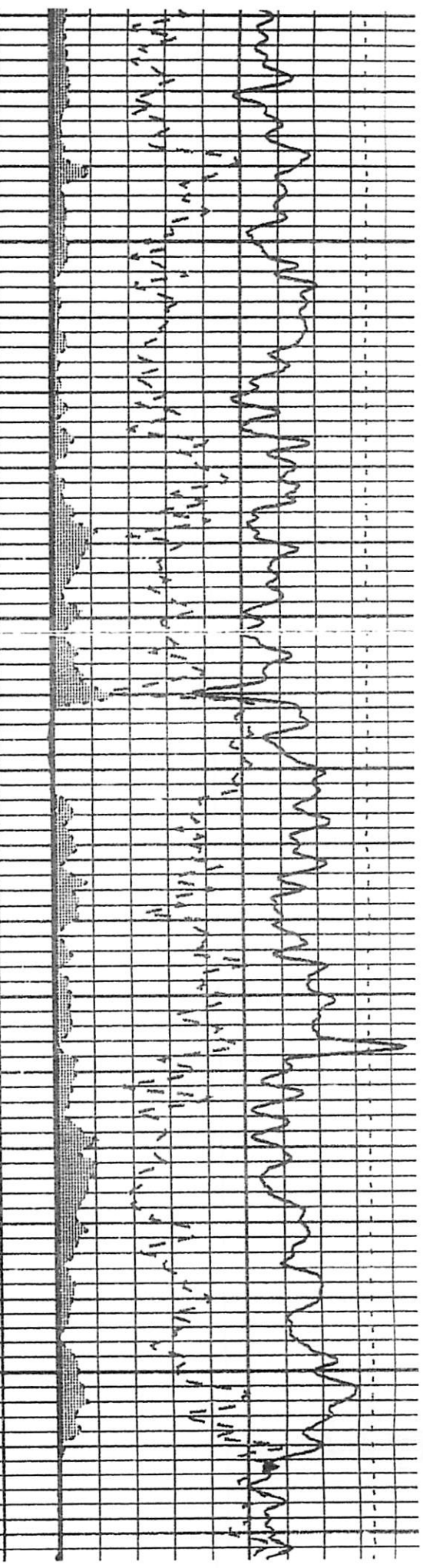
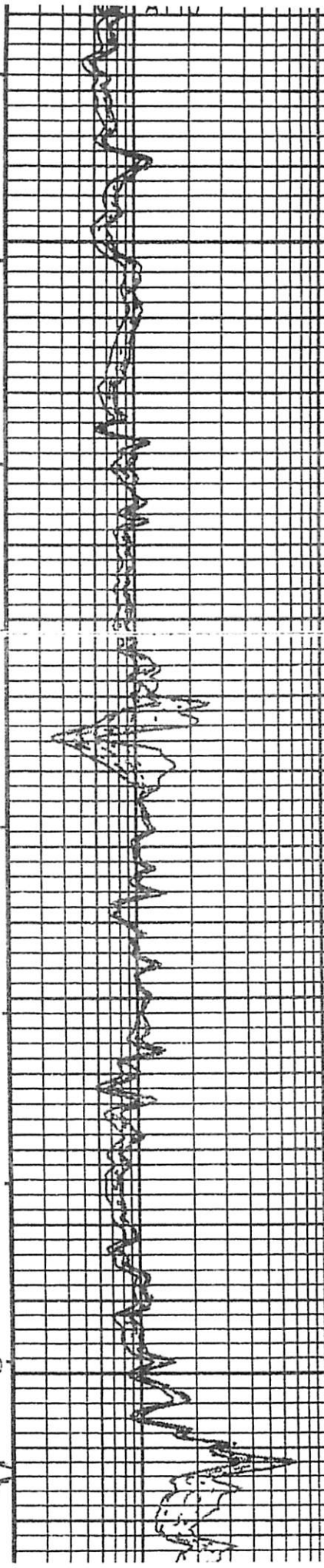
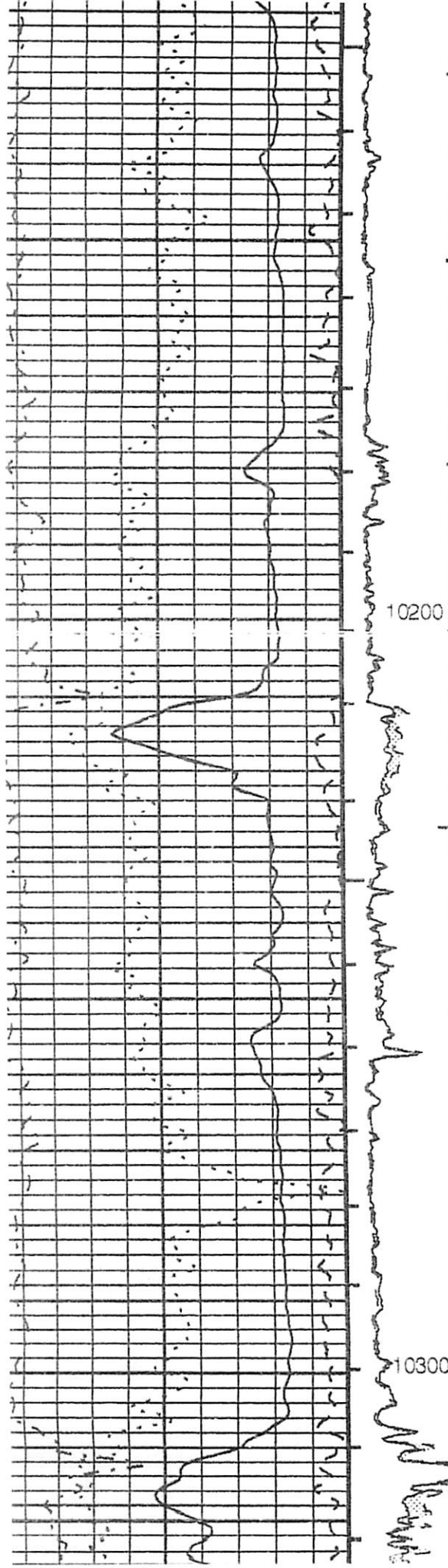
### Depth System Equipment

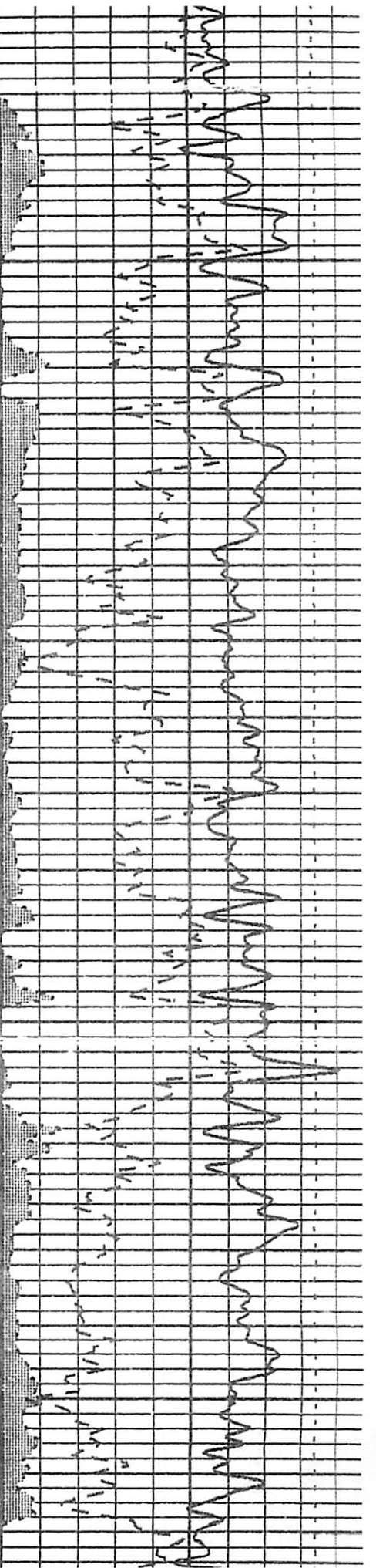
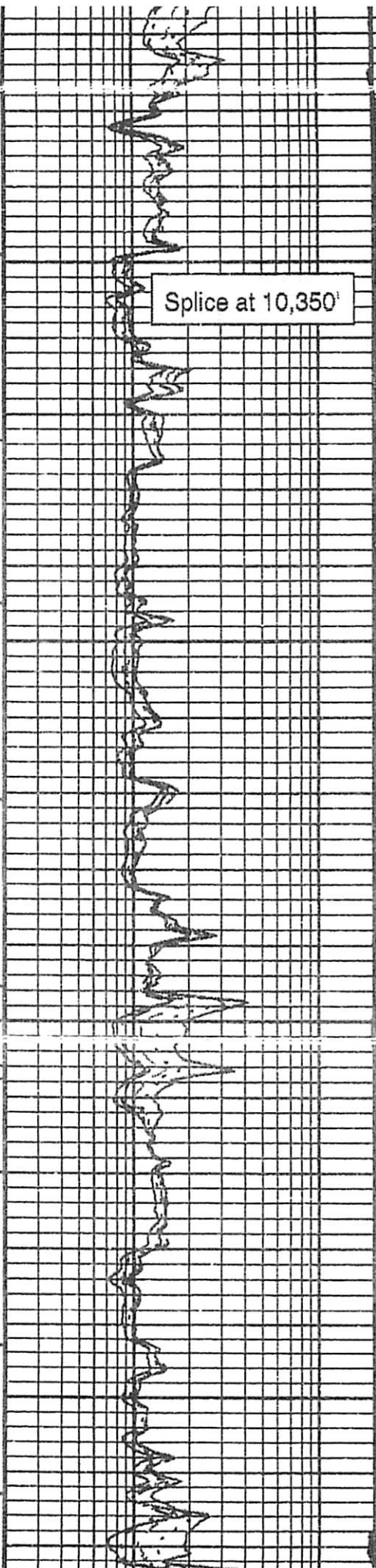
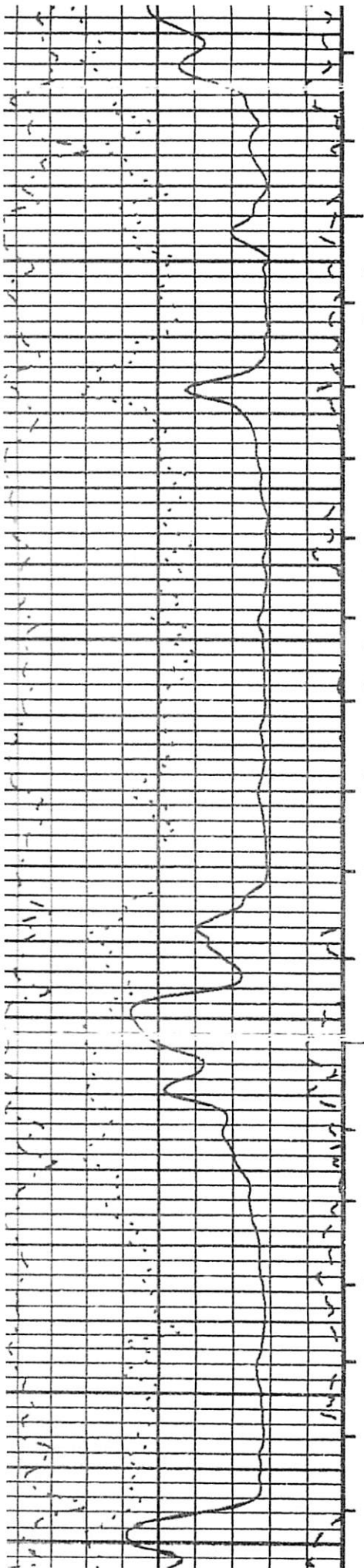
Depth Measuring Device		Tension Device		Logging Cable	
Type:	IDW-B	Type:	CMTD-B/A	Type:	7-46 M18 XS
Serial Number:	233	Serial Number:	2008	Serial Number:	5108
Calibration Date:	15-Aug-2006	Calibration Date:	21-Sep-2006	Length:	18500.00 FT
Calibrator Serial Number:	1	Calibrator Serial Number:	6620	Conveyance Method:	Wireline
Calibrator Gain:	-8	Calibrator Gain:	0.85	Rig Type:	LAND
Correction 1:	0	Correction Offset:	634.00		
Correction 2:	0				

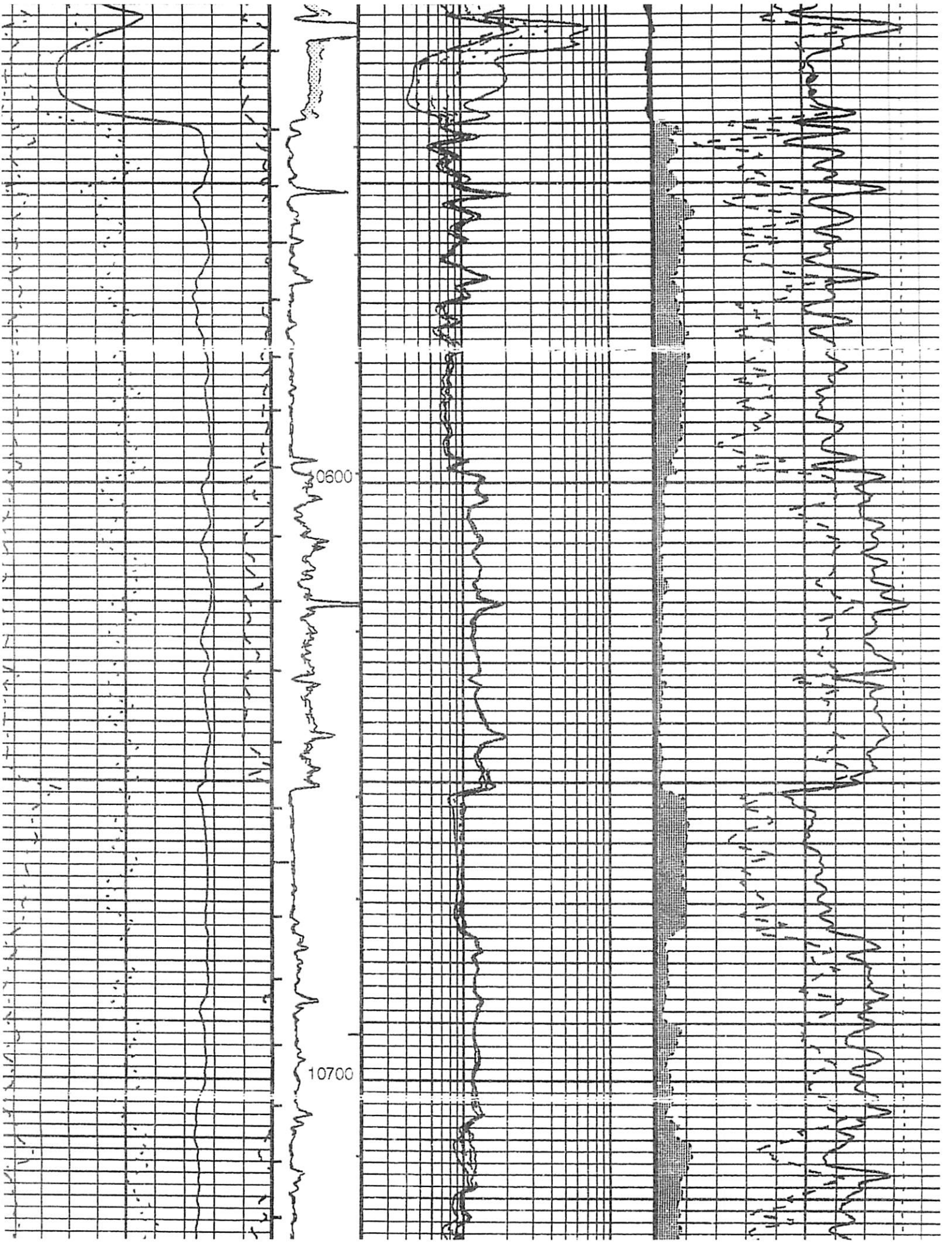


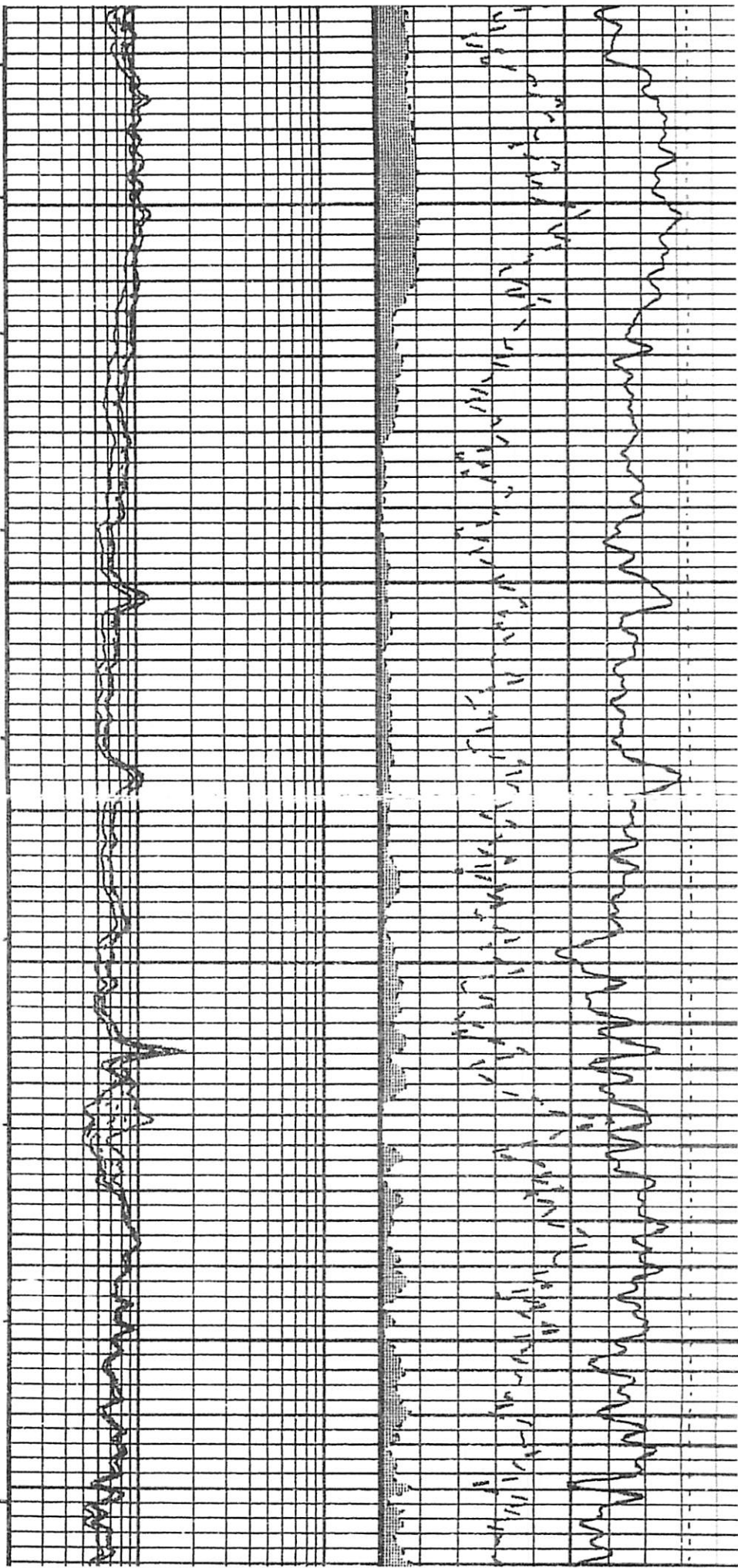
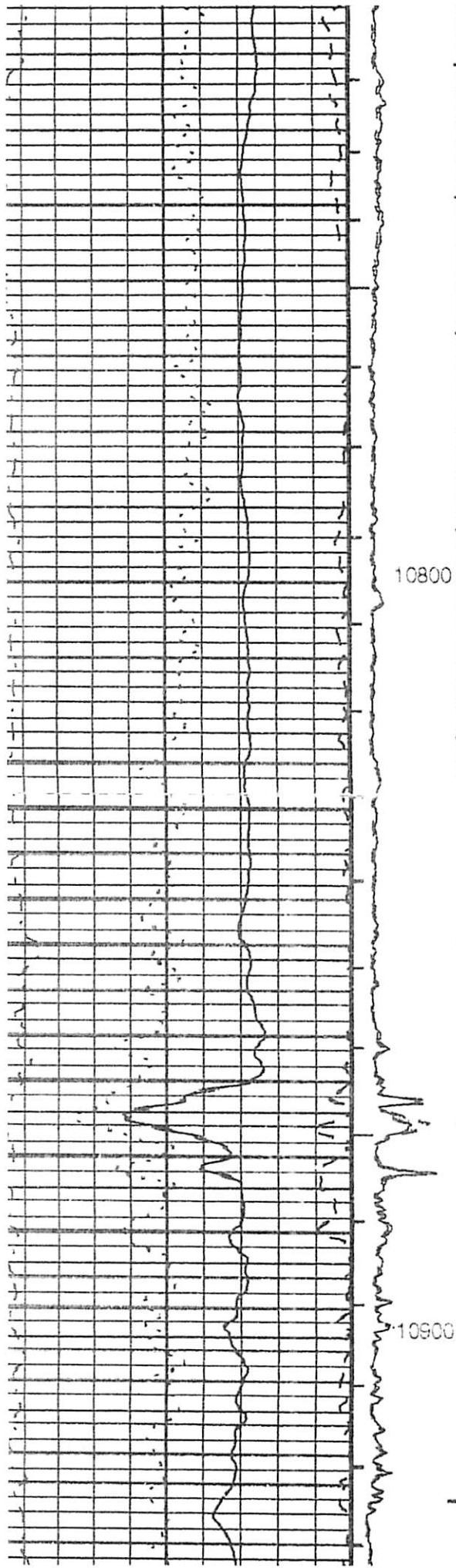


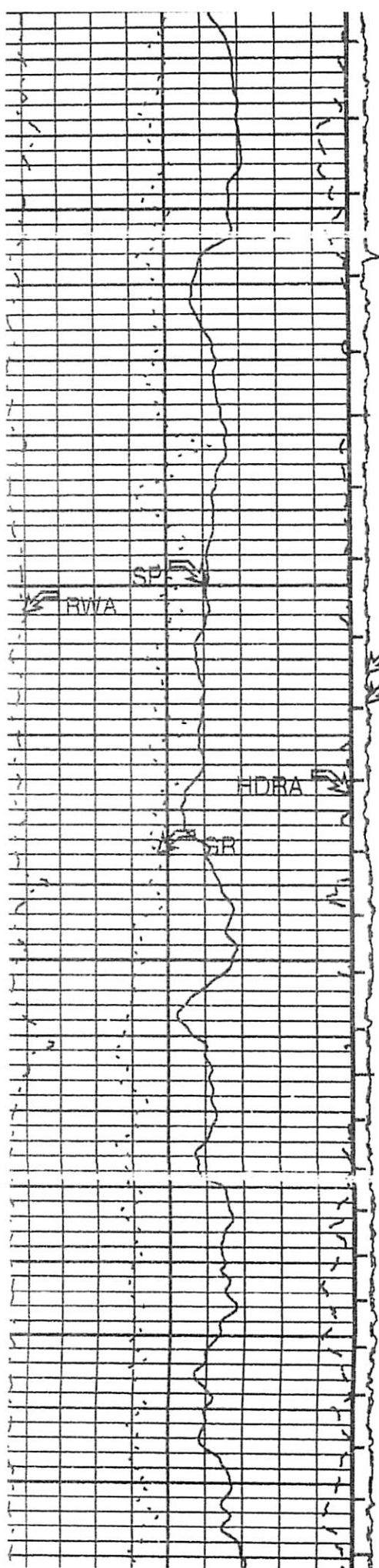




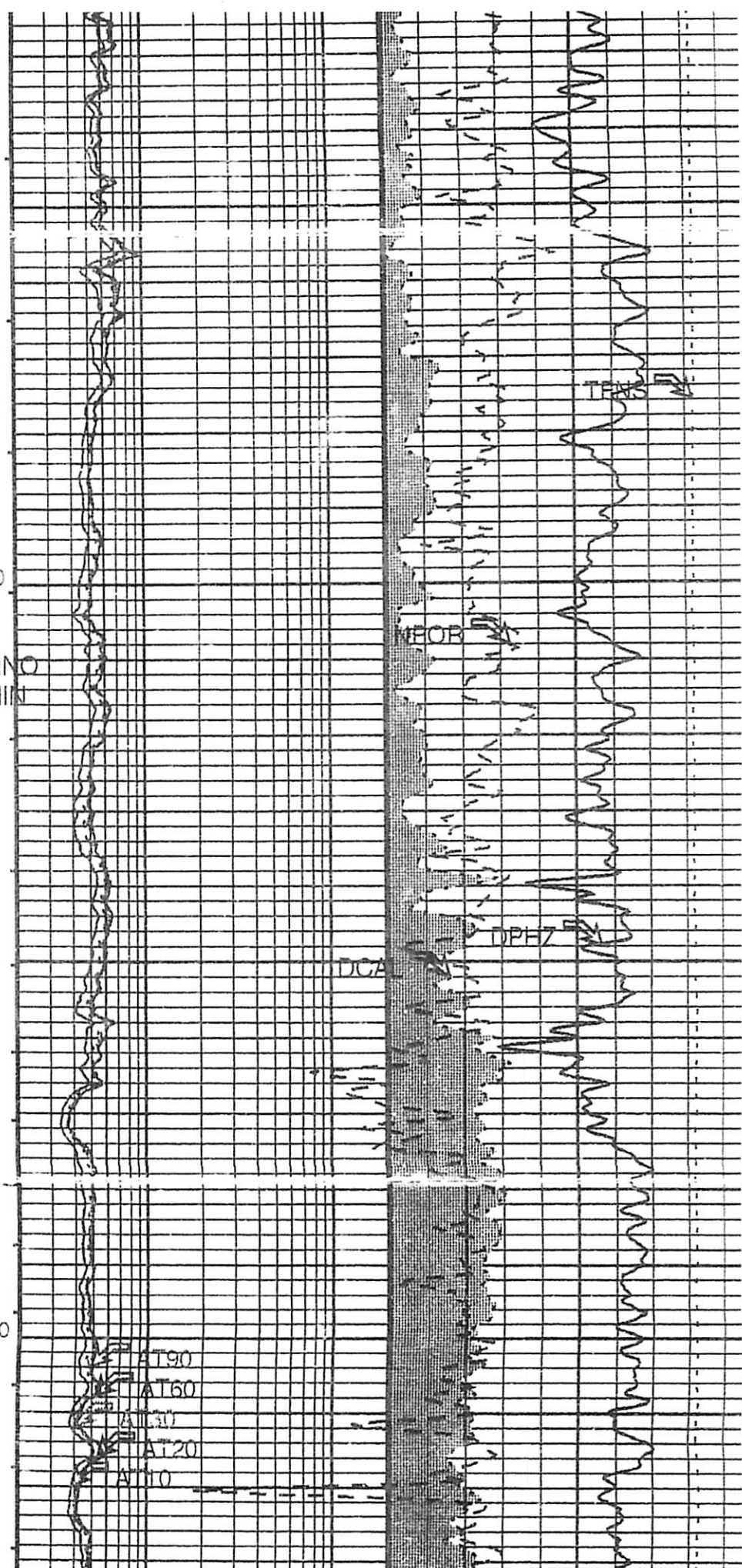








11000  
HMNO  
HMIN



11100  
AT90  
AT60  
AT30  
AT20  
AT10