

Schlumberger

DUAL INDUCTION-SFL COMPENSATED NEUTRON- FORMATION DENSITY

A CSU* Service

COUNTY
FIELD
LOCATION
WELL
COMPANY

FIELD
PRINT
5

COMPANY MOSBACHER PRODUCTION CO.

WELL LAKE ARTHUR RECLAMATION CO. #2

FIELD PERREAU ISLAND

COUNTY CAMERON STATE LOUISIANA

LOCATION 825 FSL + 2149 FWL - SEC 26.

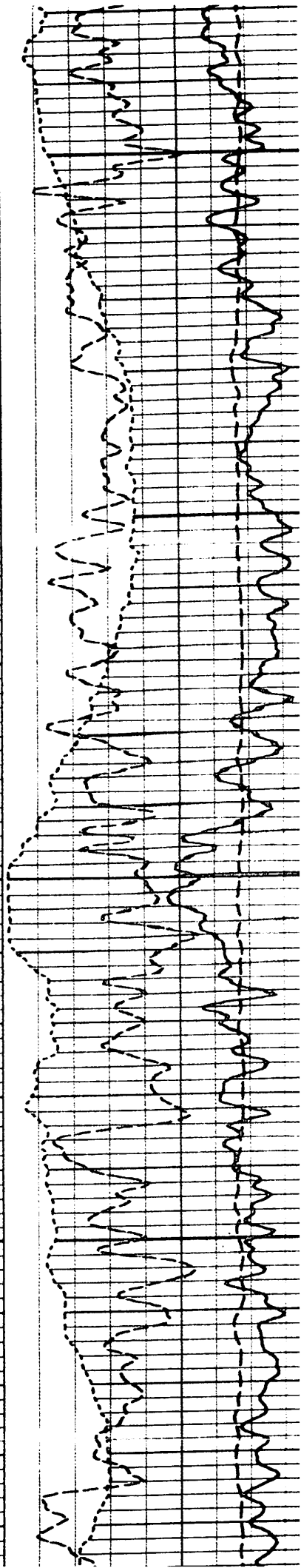
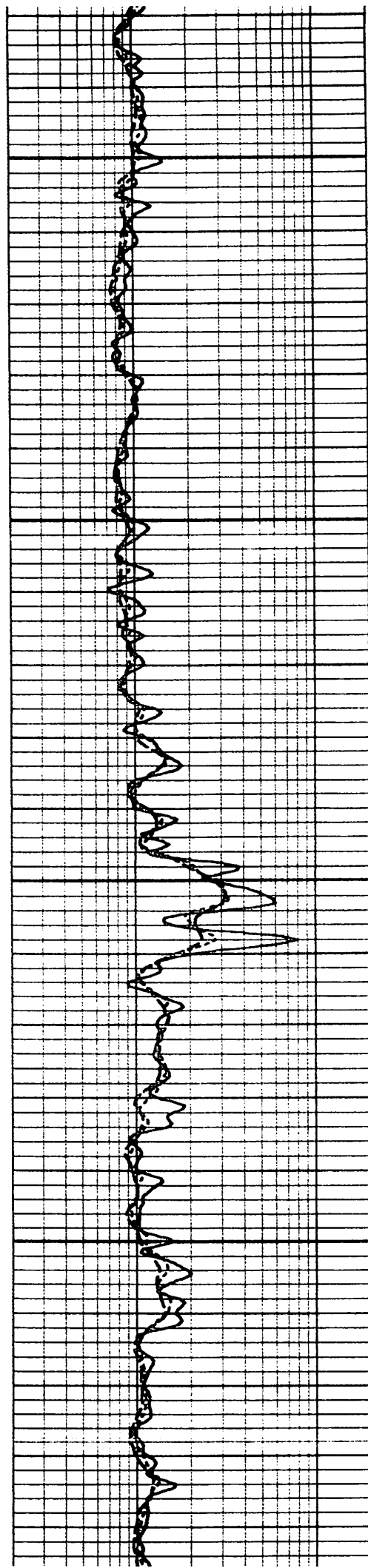
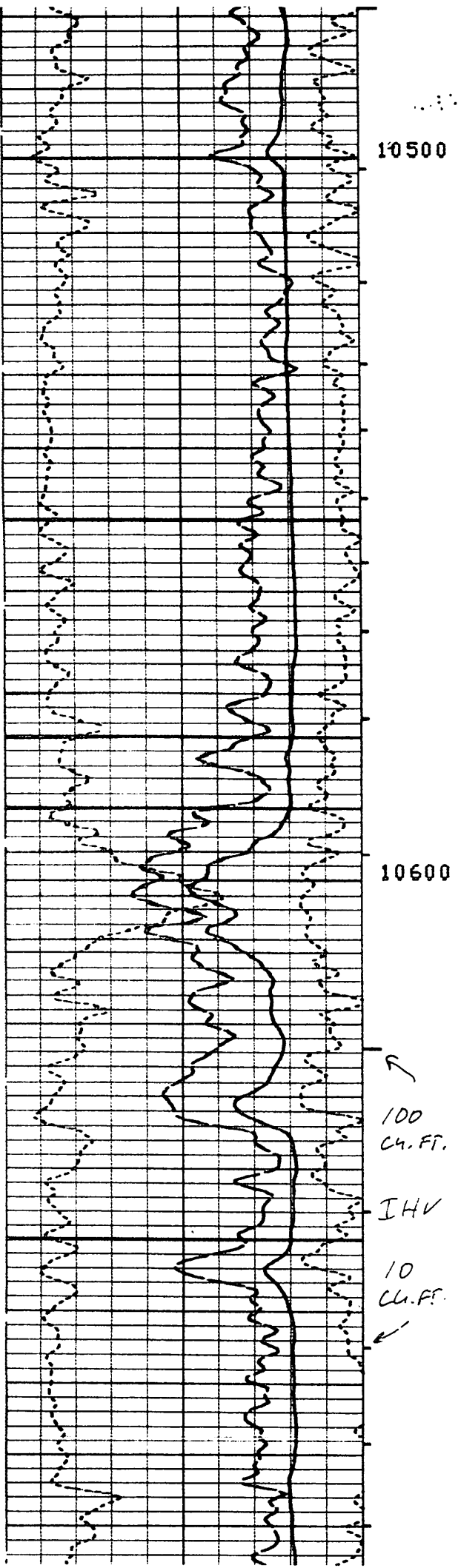
Other Services:
DIPMETER
CORES

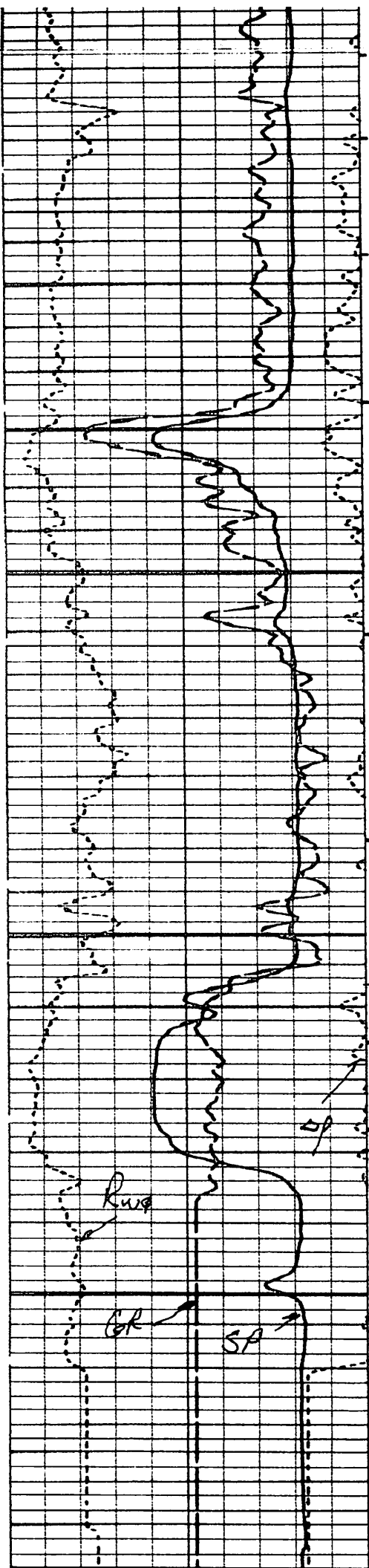
SERIAL NO.	SEC.	TWP.	RANGE
183601	26	12S	4W

Permanent Datum: BHF; Elev.: -
 Log Measured From RKB 29.5 Ft. Above Perm. Datum
 Drilling Measured From SAME

Elev.: K.B. -
 D.F. -
 G.L. -

Date	<u>1-18-83</u>					
Run No.	<u>ONE</u>					
Depth-Driller	<u>10879</u>					
Depth-Logger (Schl.)	<u>10862</u>					
Btm. Log Interval	<u>10859</u>					
Top Log Interval	<u>7525</u>					
Casing-Driller	<u>7 5/8 @ 7564</u>	@	@	@		
Casing-Logger	<u>7525</u>					
Bit Size	<u>6 3/4</u>					
Type Fluid in Hole	<u>LWS</u>					
Dens.	Visc.	<u>10.5</u>	<u>46</u>			
pH	Fluid Loss	<u>11.0</u>	<u>4.2 ml</u>	ml	ml	ml
Source of Sample	<u>TANK</u>					
Rm @ Meas. Temp.	<u>.774 @ 70 °F</u>	@	°F	@	°F	@ °F
Rmf @ Meas. Temp.	<u>.732 @ 63 °F</u>	@	°F	@	°F	@ °F
Rmc @ Meas. Temp.	<u>1.16 @ 70 °F</u>	@	°F	@	°F	@ °F
Source: Rmf	Rmc	<u>MEAS</u>	<u>CALC</u>			
Rm @ BHT	<u>.274 @ 198 °F</u>	@	°F	@	°F	@ °F
TIME	Circulation Stopped	<u>2000</u>	<u>1-17</u>			
	Logger on Bottom	<u>1130</u>	<u>1-18</u>			
	Max. Rec. Temp.	<u>198</u>	°F	°F	°F	°F
Equip.	Location	<u>8349</u>	<u>LCOH</u>			
Recorded By	<u>HACKBART</u>					
Witnessed By	<u>CARPENTER</u>	<u>BATTLE</u>	<u>MYERS</u>			





10700

10800
FIRST
READINGS

GR
 ϕ_w
 R_{wg}
 ϕ_D of
 DCAL
 RES
 SP
 T.P.

