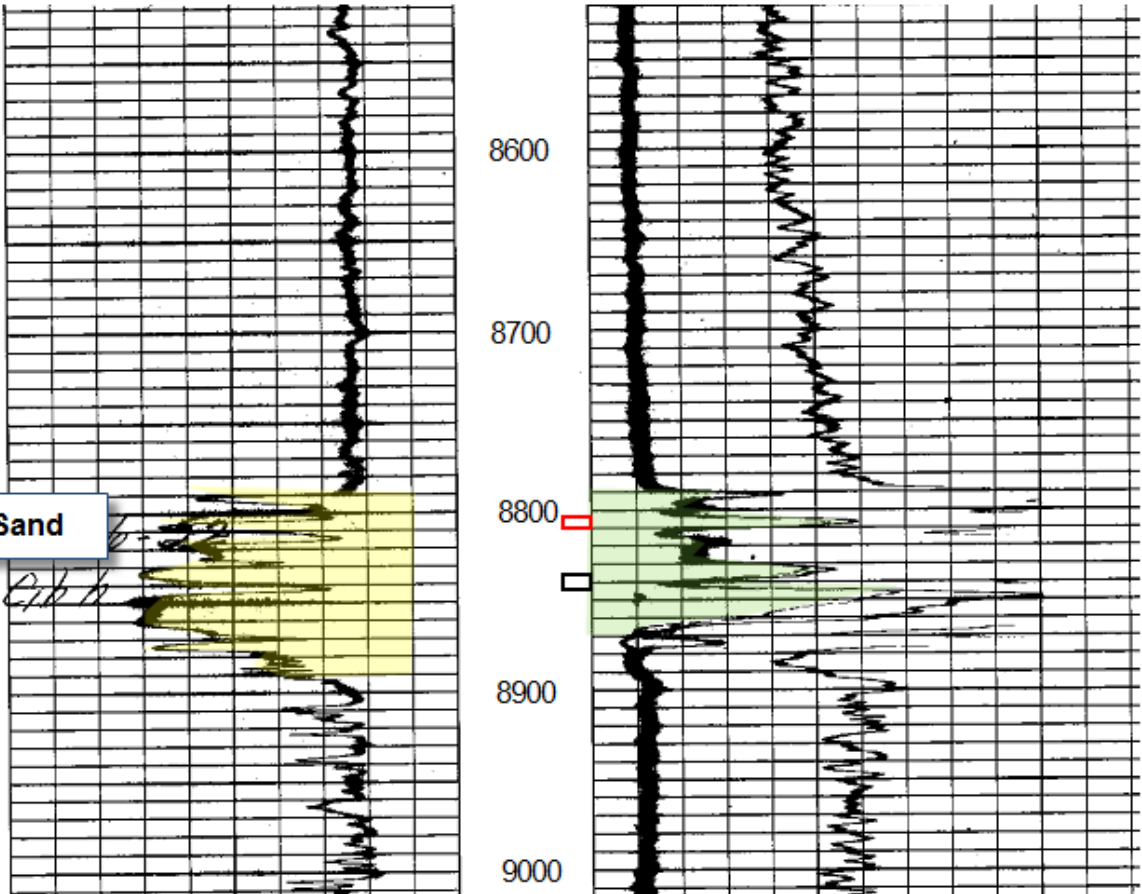


7-4-04  
P&A

Pickens,  
King #1  
12-10-69

Cib Haz 12 Sand



5-1-96

014922	4/15/96 - 5/01/96	Tiger Well Ser. B.J. Western	B. J. Western squeeze casing leak 625' to 655' with 300 sx. Class "A" Cement. Drilled cement from 523' to 684'. PBD 5656' Set Baker Model R-DG Packer @ 5393'. Tested casing to 500#, Held O.K. Tested by Office of Conservation, approved and returned to production.
--------	-------------------	------------------------------	---

10-7-92

011587	10/5/92 - 10/7/92	LA Swabbing	Repair tubing leak, no change in perforations, packer setting depth, or tubing installation.
--------	-------------------	-------------	--

5-11-87  
converted to SWD

INJECTION & MINING	4/16/87	5/11/87	Western McCullough Schlumberger	Squeeze Perforations 8791-8795' with 25 sx. Class H with top of cement in 4-1/2" Casing @ 8598'. Perforate for squeeze @ 5468-5470' and squeeze with 200 sx. Class H. Drill out cement and run Bond Log Perforate for disposal at 5560-5570'. Run tubing and packer to 5445'. Complete for Saltwater Disposal.
--------------------	---------	---------	---------------------------------	--

1-12-87

L 120-87	1/12/87	Halliburton, McCullough & Schlumberger	Squeeze perforations 8804-8810', clean out to P.B.T.D 8955'. Run TDT Log and perforate for production 8872-8877'. Same Reservoir. (Cib Haz No. 12 Sand). Swabbed 100% water. Squeeze 8872-8877' and perforate 8790-8795', 8798-8801', 8804-8810' and 8816-8820', same Reservoir. Swabbed 100% water. Set C.I.B.P. at 8801'. Swabbed perforations 8790-8795' and 8798-8801'. Swabbed 100% water. Squeezed and re-perforated 8791-8795', Swabbed 100% water. Same Reservoir (Cib Haz No. 12 Sand). Temporarily abandoned.
----------	---------	--	---

4-11-79  
8804'-10'  
60 BOPD 30 MCFD 0 BWD  
900# FTP Grav 35.7

1-8-70  
8846'-52'  
144 BOPD 112 MCFD 0 BWD  
1375# FTP Grav 35.0