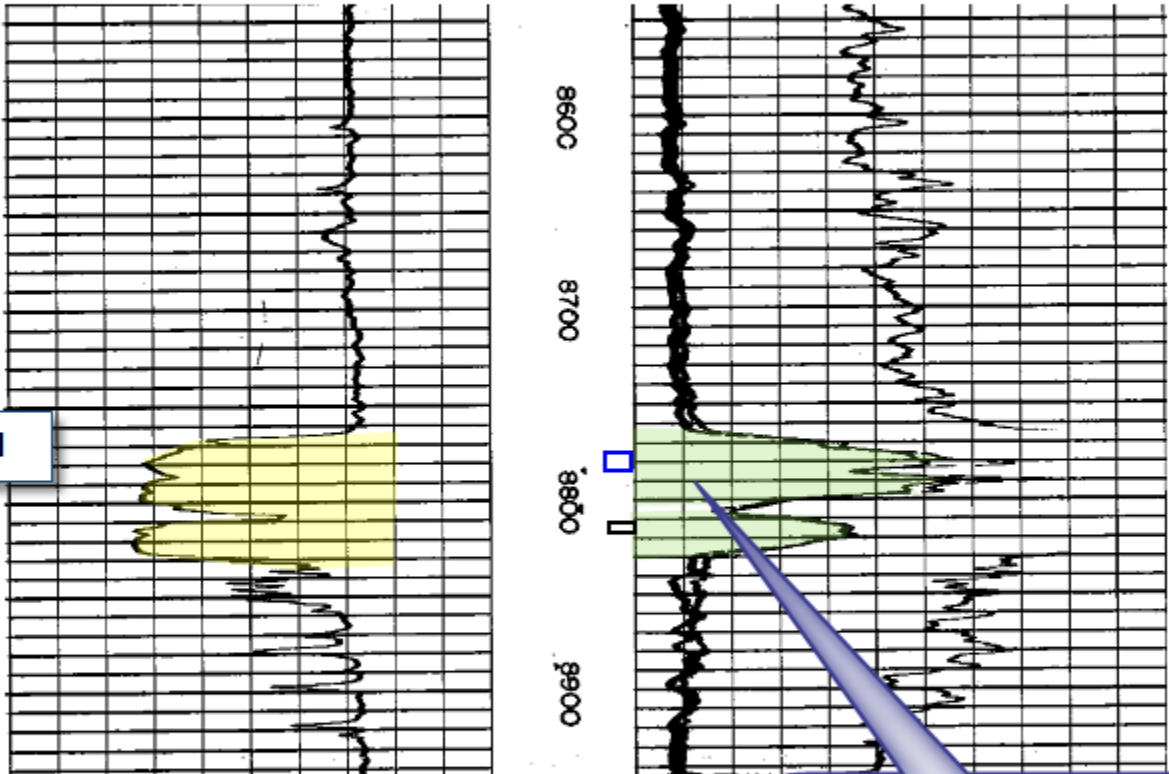


Pickens,
Kirkwood #1
2-13-70

Cib Haz 12 Sand



12-20-04
P & A

Pickens Co.
2-5-03
8774'-84'
55 BOPD 60 MCFD 3 BWD
420# FTP Grav 35.6
Flowing

2-20-70
8811'-17'
145 BOPD 112 MCFD
1350# FTP Grav 35

645,518 BO
267 MMCF
9 BW
Pressure deplete- No water drive as in the
King wells to the west and the Noble #2
well North.