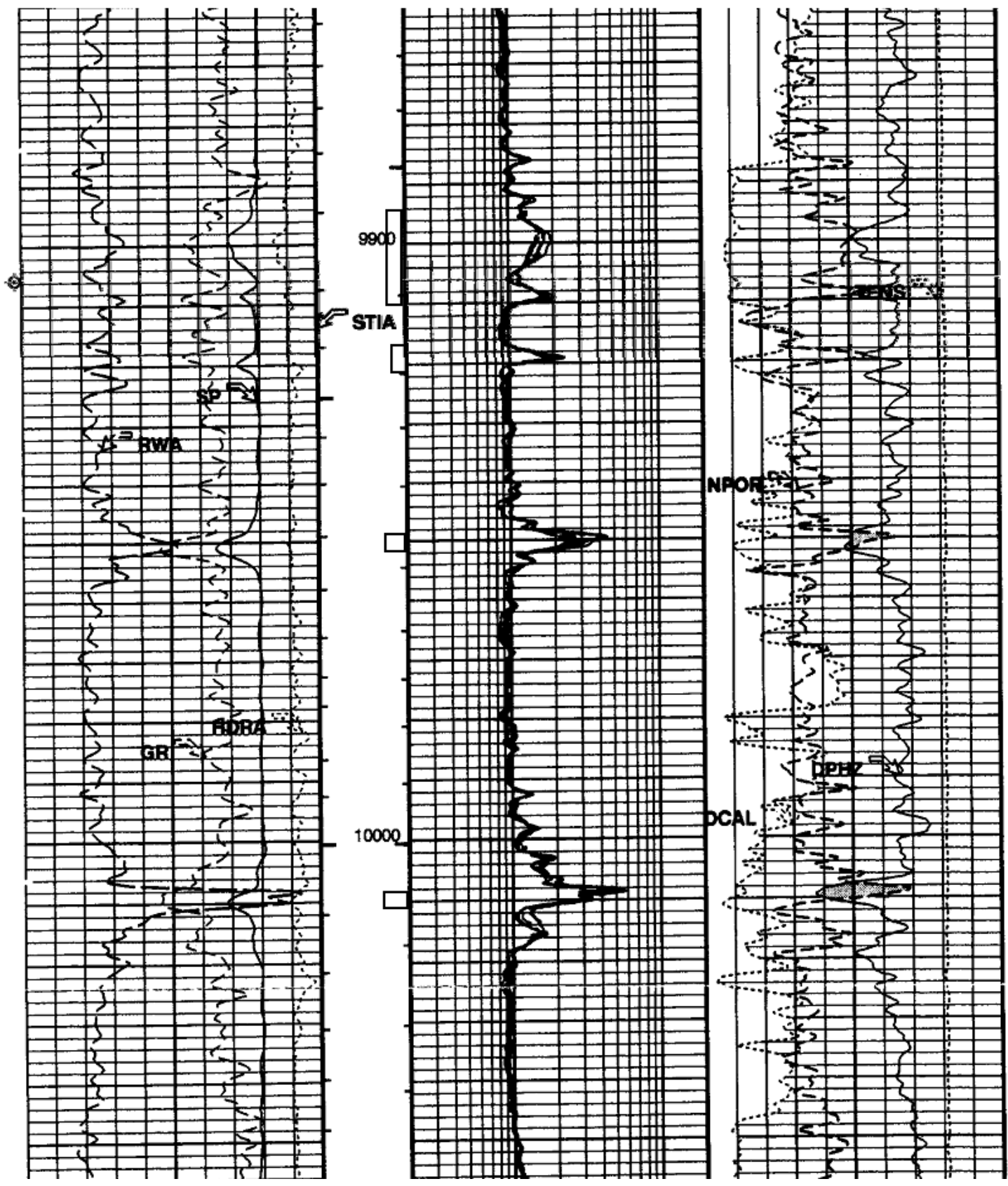


Samson
SL 15691 #1 MD
2-16-00



3-25-14
add perf 9894-9910 & 9917-21'
543 MCFD 3 BOPD 1465 FTP
5 BWD Grav 37

9-18-05
perf 9948-52 & 10008-10011
939 MCFD 5 BOPD 2377 FTP
31 BWD Grav 49