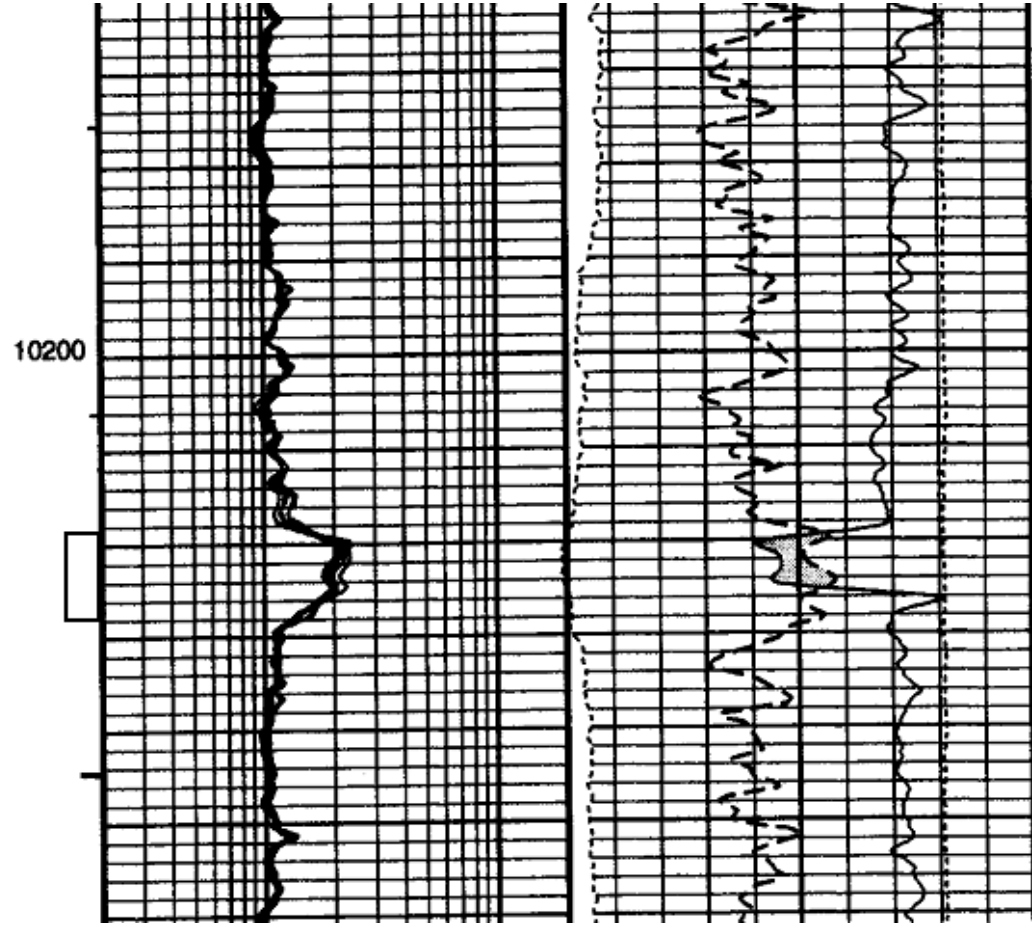
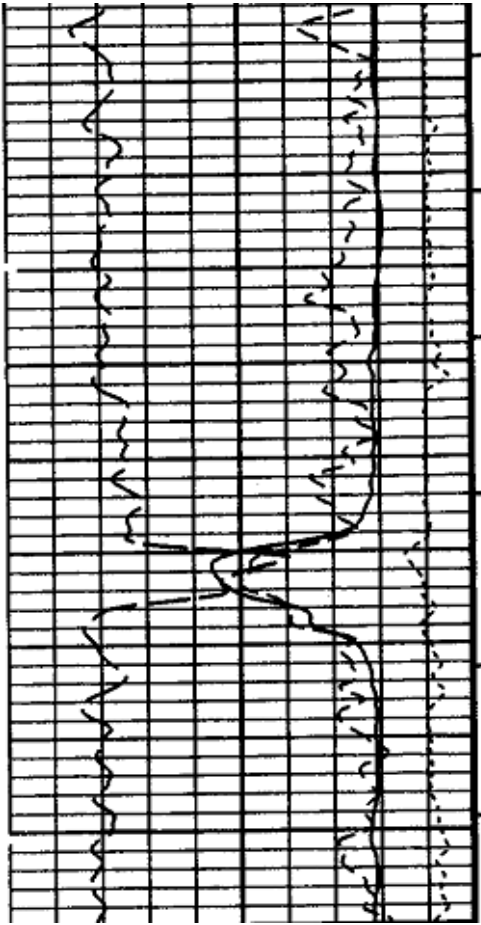


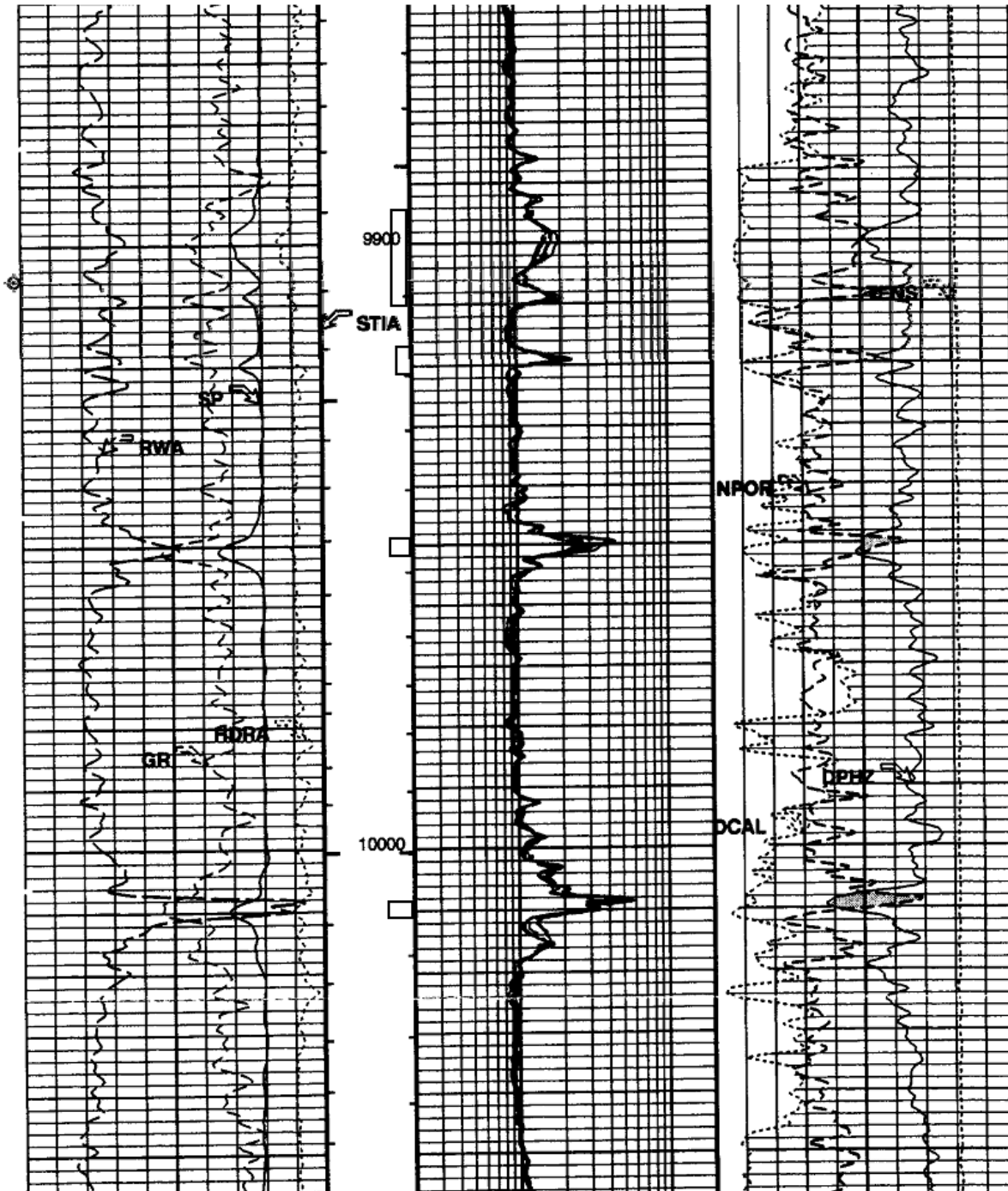
**Samson
SL 15691 #1**

**Cum. Prod. 2000-2015
28,421 BO & 3.85 BCF**

RPT TYP	TEST DATE	RPT DATE	OIL POT	COND	GAS DEL	WATER	BSW%	FLOW PRES	SHUTIN PRES	CHOKE	UPPER PERF	LOWER PERF	BOT HOLE PRES
DT-1	4/1/2015	5/1/2015		0	179	0		790		14	9894	10011	
DT-1	9/18/2014	11/1/2014		5	423	0		790		14	9894	10011	
DT-1	4/10/2014	5/1/2014		5	608			1367		8	9948	10011	
DT-1	9/15/2013	11/1/2013			149			40		34	9948	10011	
DT-1	3/28/2013	5/1/2013			185			30		34	9948	10011	
DT-1	10/15/2012	11/1/2012			270			60		34	9948	10011	
DT-1	3/15/2012	5/1/2012		0	165	0		30		34	9948	10011	
DT-1	9/21/2011	11/1/2011		1	337			20		34	9948	10011	
DT-1	4/24/2011	5/1/2011		1	644			200		34	9948	10011	
DT-1	10/13/2010	11/1/2010		1	645			100		34	9948	10011	
DT-1	9/17/2009	11/1/2009		2	567			170		34	9948	10011	
DT-1	3/30/2009	5/1/2009		2	609			200		34	9948	10011	
DT-1	3/22/2008	5/1/2008		3	275			210		15	9948	10011	
DT-1	9/30/2007	11/1/2007		8	957			400		20	9948	10011	
DT-1	4/20/2007	5/1/2007		1	682			400		15	9948	10011	
DT-1	10/13/2006	11/1/2006		2	485	1		250		15	9948	10011	
DT-1	4/6/2006	5/1/2006		2	767	1	11	375		17	9948	10011	
SDM2G	1/13/2006	1/13/2006		10	1.26	1	0.1	1050		14	9948	10011	
DT-1	10/18/2005	11/1/2005		8	792	0		1900		9	10218	10228	
DT-1	3/18/2005	5/1/2005		5	545			75		10	10218	10228	
DT-1	9/16/2004	11/1/2004		5	800			80		OPEN	10218	10228	
DT-1	4/11/2004	5/1/2004		3	1087	2		380		32	10218	10228	
DT-1	9/28/2003	11/1/2003		4	1219	2		380		32	10218	10228	
DT-1	4/2/2003	5/1/2003		11	1444	1		450		32	10218	10228	
DT-1	9/20/2002	11/1/2002		10	1793	3		550		32	10218	10228	
DT-1	3/20/2002	5/1/2002		15	2289	3		650		32	10218	10228	
DT-1	9/21/2001	11/1/2001		13	1935	3		850		32	10218	10228	
DT-1	3/24/2001	5/1/2001		23	2522	3		850		32	10218	10228	
DT-1	10/23/2000	12/1/2000		27	2925	3		900		32	10218	10228	
DT-1	7/18/2000	9/1/2000		25	2814	3		825		32	10218	10228	
SDM2G	6/30/2000	6/30/2000	23		2657	2	8	850		52	10218	10228	
DT-1	5/22/2000	6/1/2000		20	1914	5		825		28	10218	10228	



4-9-00
perf 10218-228'
1179 MCFD 14.5 BOPD
760 FTP 1.82 BWD Grav 59.6



3-25-14
 add perf 9894-9910 & 9917-21'
 543 MCFD 3 BOPD 1465 FTP
 5 BWD Grav 37

9-18-05
 perf 9948-52 & 10008-10011
 939 MCFD 5 BOPD 2377 FTP
 31 BWD Grav 49