

**Estimated Reserves
SKYLARK PROSPECT**

**7800 Sand (See map)
10 Acres x 10' x 800 BO/AF = 80,000 BO**

**8100 Sand (See map)
9 Acres x 2' x 800 BO/AF = 14,400 BO**

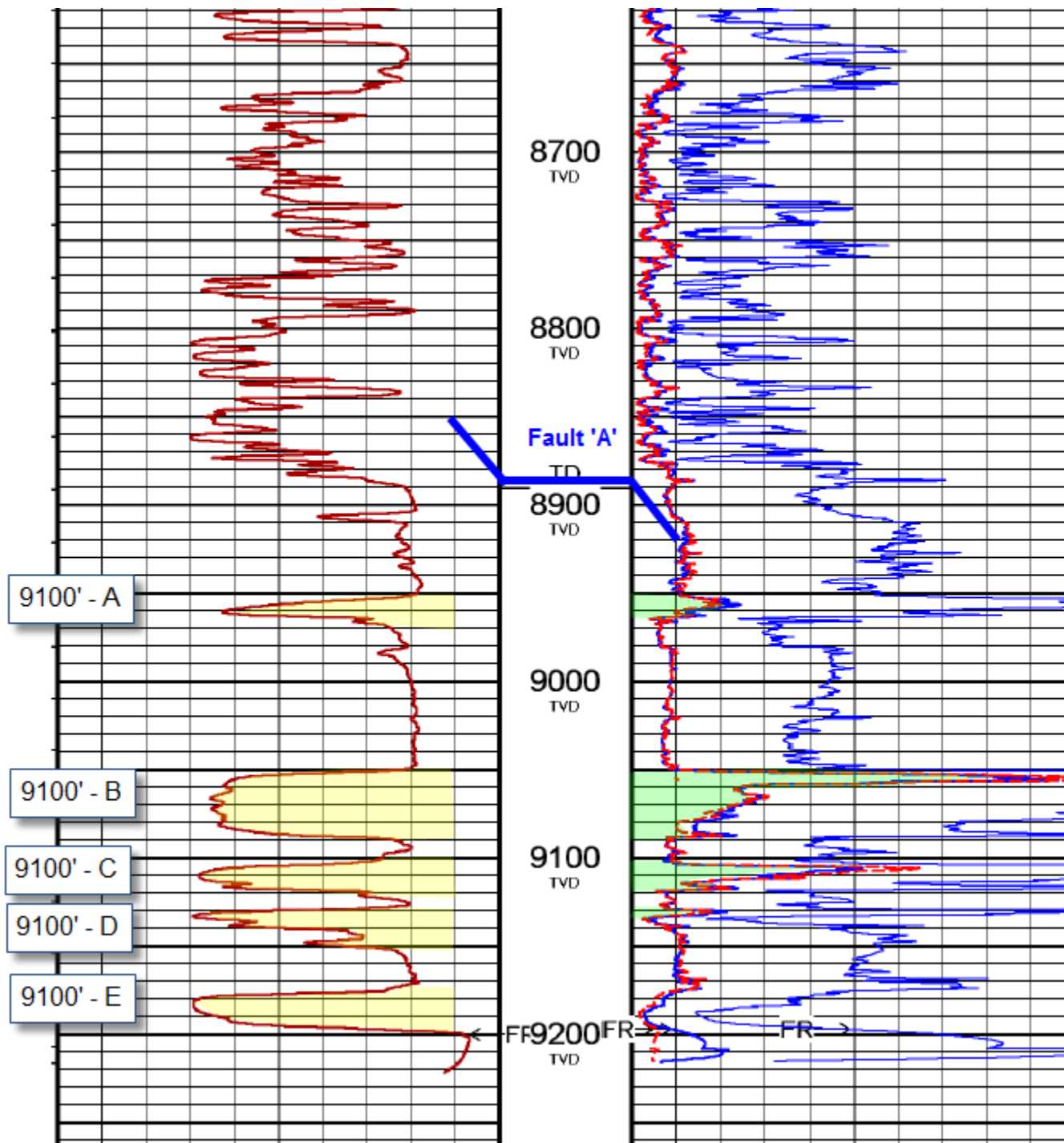
**9100-A
12 Acres x 14' x 700 BO/AF = 117,600 BO
12 Acres x 14' x 1500 MCF/AF = 252 MMCF**

**9100-B
12 Acres x 25' x 700 BO/AF = 210,000 BO
12 Acres x 15' x 1500 MCF/AF = 270 MMCF**

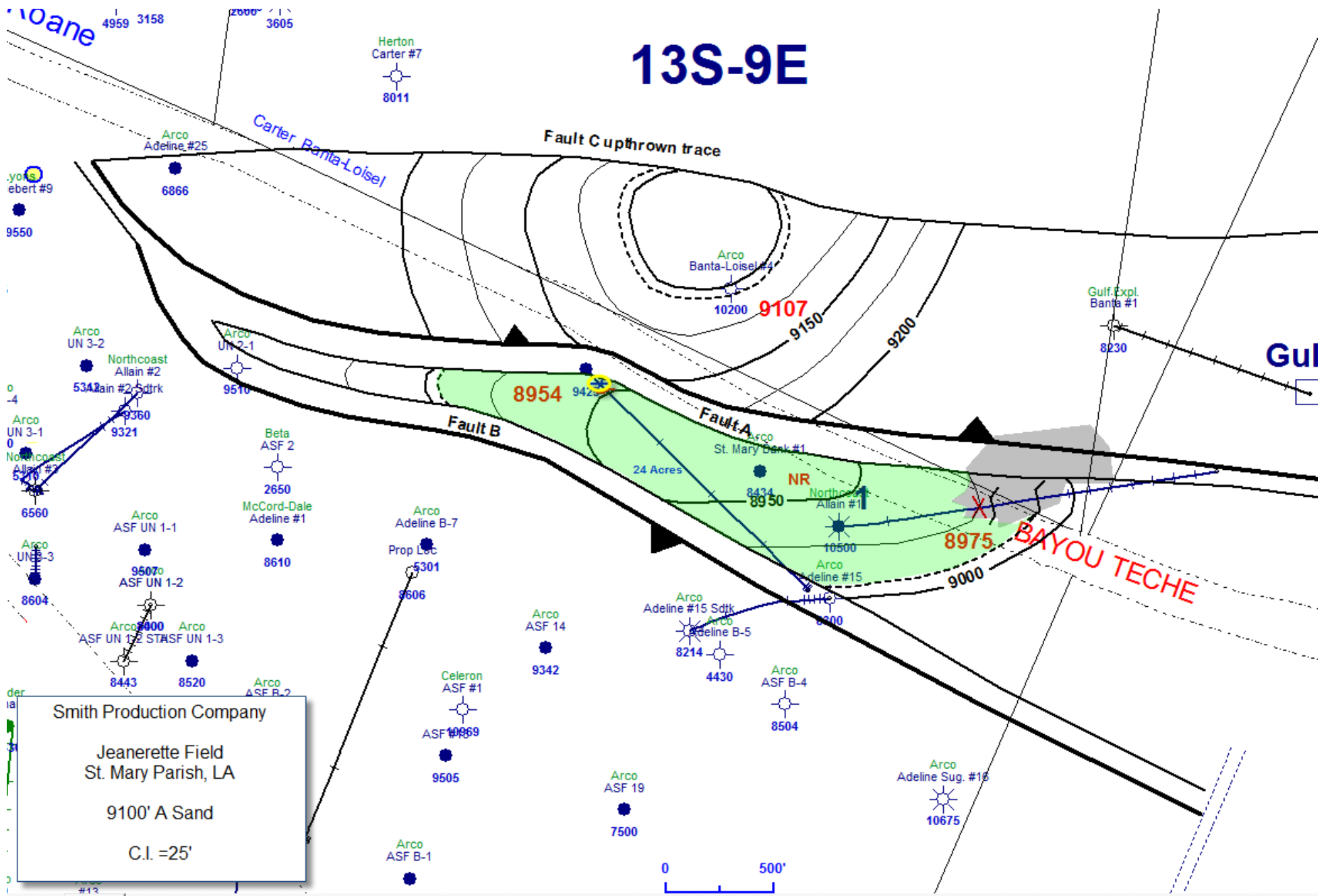
**9100-C
12 Acres x 18' x 700 BO/AF = 151,200 BO
12 Acres x 15' x 1500 MCF/AF = 270 MMCF**

**9100-D
8 Acres x 2' x 700 BO/AF = 11,200 BO
4 Acres x 3' x 1500 MCF/AF = 18 MMCF**

**Total Oil: 584,400 BO
Total Gas: 810 MMCF**



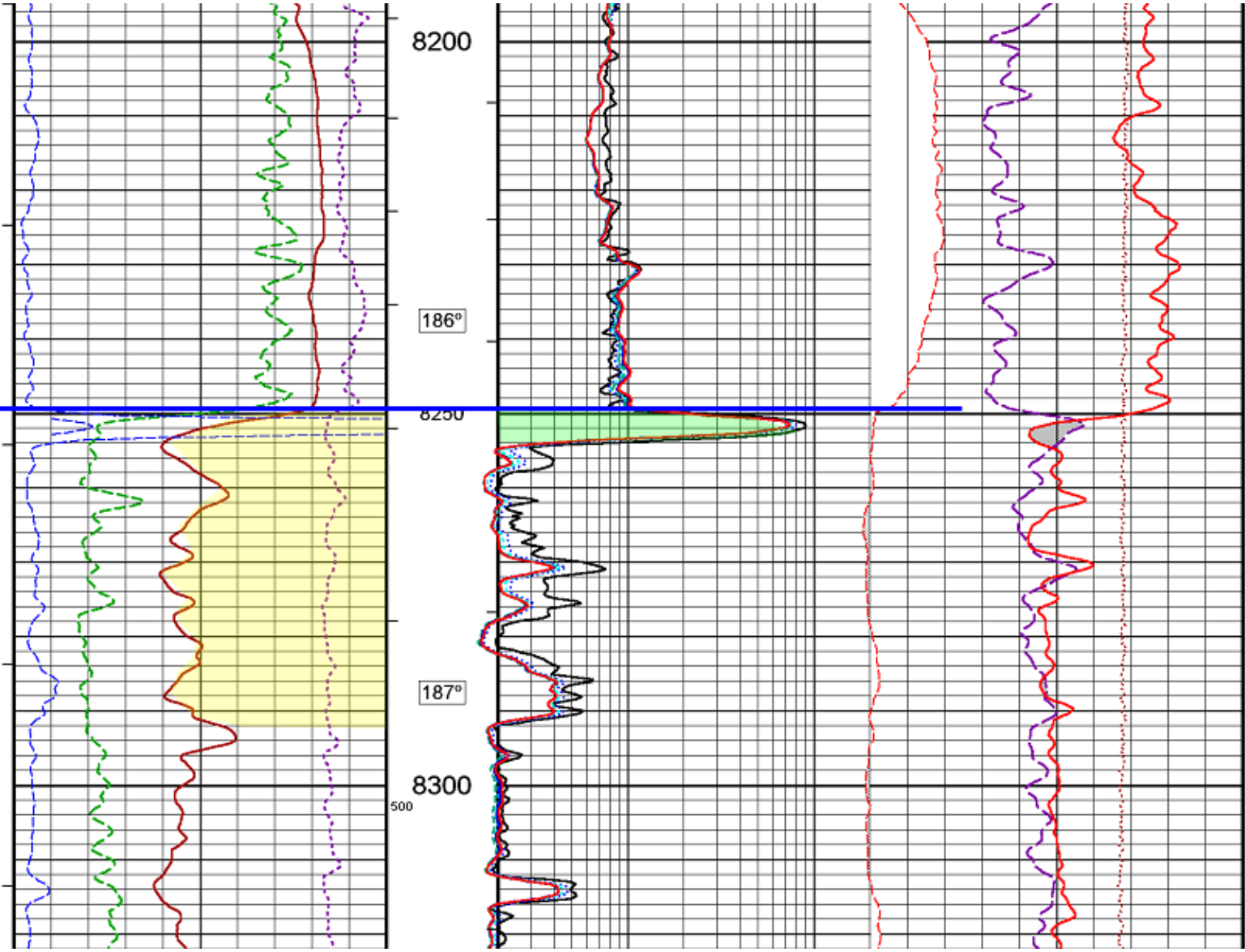
13S-9E



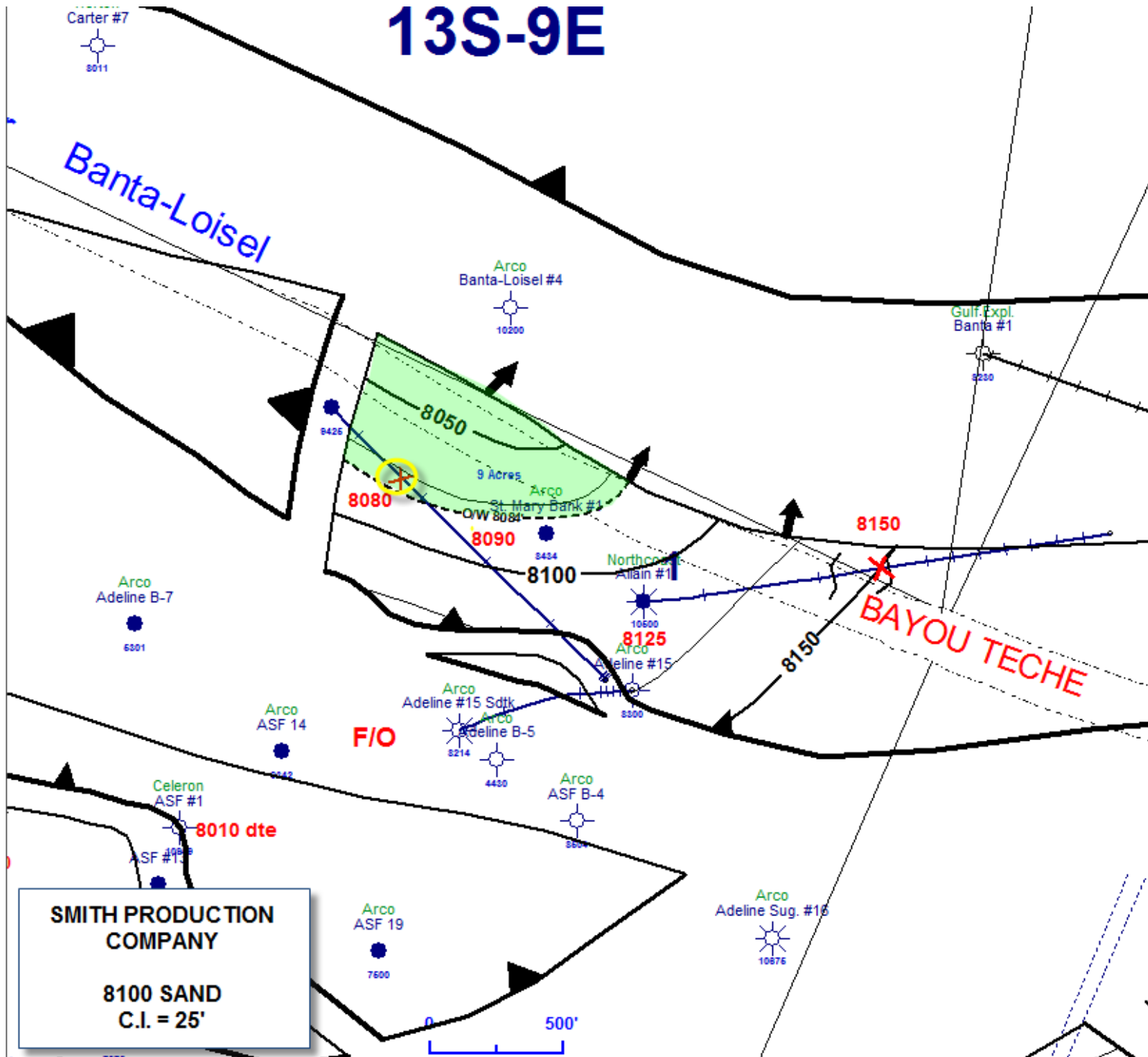
Smith Production Company
Jeannerette Field
St. Mary Parish, LA
9100' A Sand
C.I. =25'

8100 Sand

8080 TVD

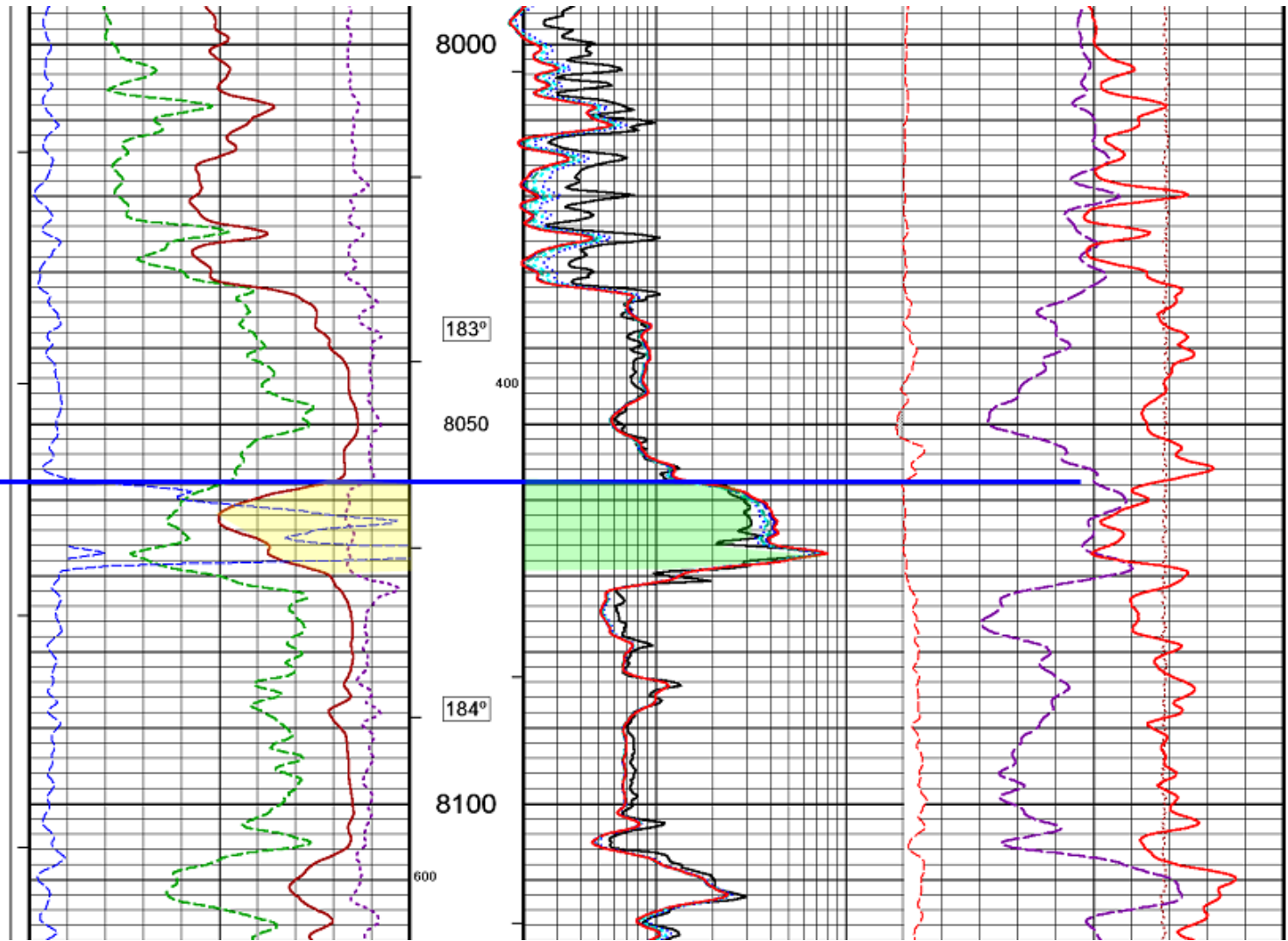


13S-9E



7800 Sand

7898 TVD



Banta-Loisel

Arco Banta-Loisel #4
F/O 10200

Cum. Prod.
103,013 BO

The Arco well did not deplete this sand due to possible behind pipe water channel during its production.

Gulf Expl. Banta #1

7898
7884
8434
10 Acres
7900
LK Oil
Northco Allain #1
7950

F/O

BAYOU TECHE

Arco Adeline B-7
6301

Arco ASF 14
6342

Arco Adeline #15
8214
7856
4450
Arco ASF B-4
6604

7948

Celeron ASF #1
10989
ASF #13

Arco ASF 19
7600

Arco Adeline Sug. #16
10876

SMITH PRODUCTION COMPANY

7800 SAND
C.I. = 25'



Estimated Reserves

7800 Sand
10 Acres x 10' x 800 BO/AF = 80,000 BO

U

7876