

**Little Chenier
TRIANGLE PROSPECT**

Post Drill Results

Unfortunately, we logged the Smith, Randall Boudoin #1 well this evening and did not find any commercial hydrocarbons. We did have a minor amount of oil (4' Oil) in our most shallowest objective, the Amph B sand. However, mapping shows only an 8 acre reservoir which would yield in the best case, less than 12,000 barrels of oil.

All of the sands came in very high structurally as mapped, however, the 7050', 7400', 7500' and 7700' sands had no accumulation.

In particular, the 7700' sand which consisted of 3 lobes, the A, B, & C lobes where all low to the Un. Oil of California well to the north which had oil just below the fault cut.

Smith Production Company recommends that we plug and abandon this well.

91

OIL
& LAND 2

GOLDKING PROD.
MERMENAU MINERAL & LAND E-2
-7079

GOLDKING PROD.
MERMENAU E-3
-7085

GULF OIL
MERMENAU MINERAL & LAND
-7085

GOLDKING PROD.
MERMENAU MINERAL & LAND E-1
-7093

GOLDKING PROD.
MERMENAU MINERAL & LAND D-2
-7058

UNION OIL OF CALIF.
BENOIT, A.
-7132

TEXAS CRUDE OIL
MERMENAU MINERAL & LAND
-7207

WATSON OIL
NUNEZ, A.
-7004

OLEUM COMPANY INC.
NUNEZ, A.
-7004

WATSON OIL
NUNEZ, A.
-7004

42

SWIFT ENERGY
BOUDOIN
-7068 8 Acres

NR

GULF OIL
MERMENAU MINERAL LAND A-1
-7132

WATSON OIL
BOUDOIN, J.
-7120

WATSON OIL
BOUDOIN, E.
-7120

BAYARD EXPL. CO., INC.
MERMENAU MINERAL LAND
-7120

13 -7120

-7120

18

-7150

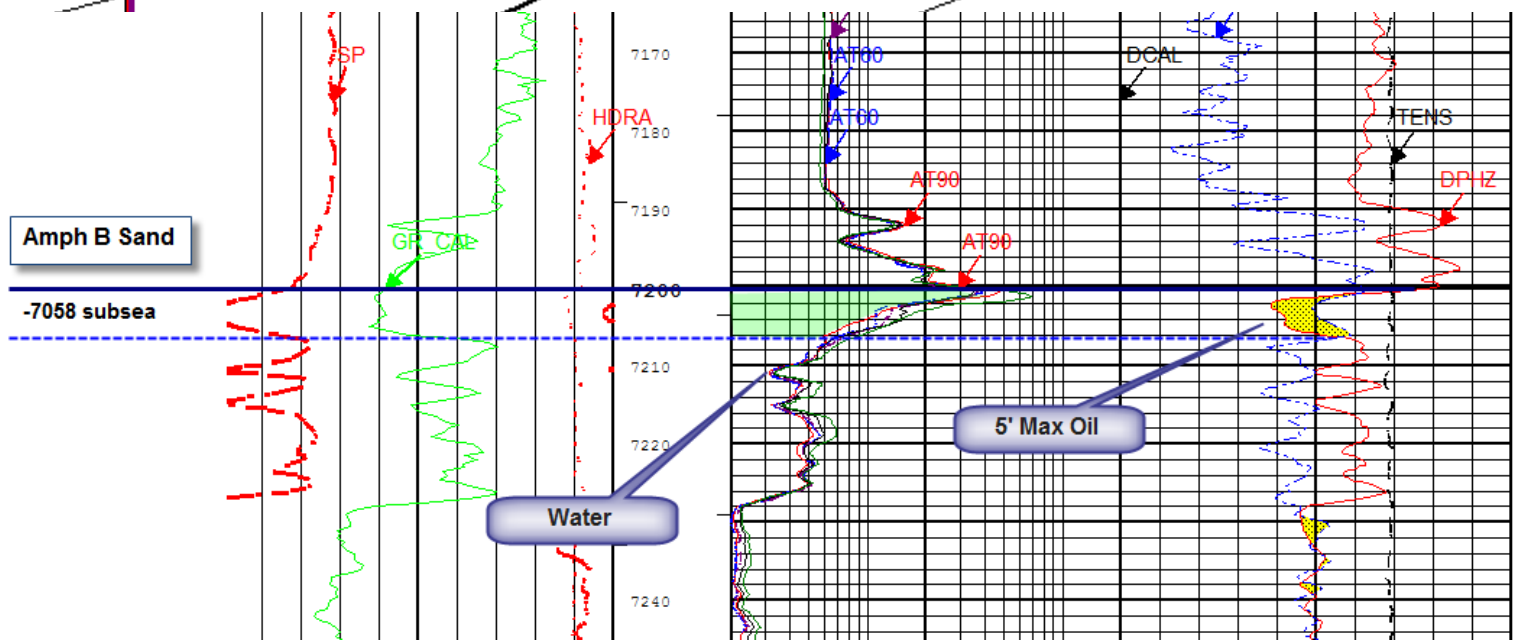
440/-6876

Amph B Sand

-7058 subsea

Water

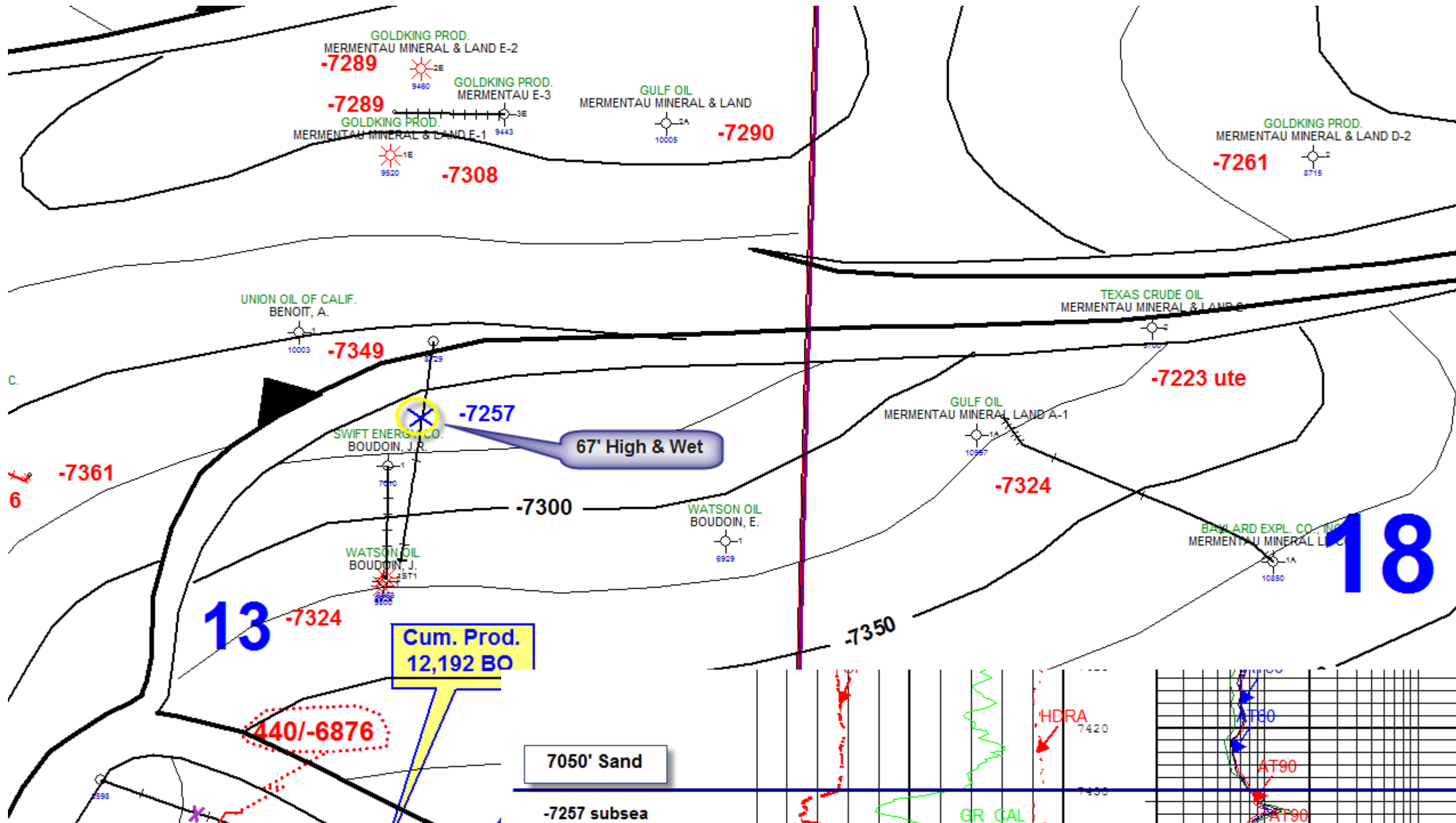
5' Max Oil



Little Chenier
Triangle Prospect

Amph B Sand

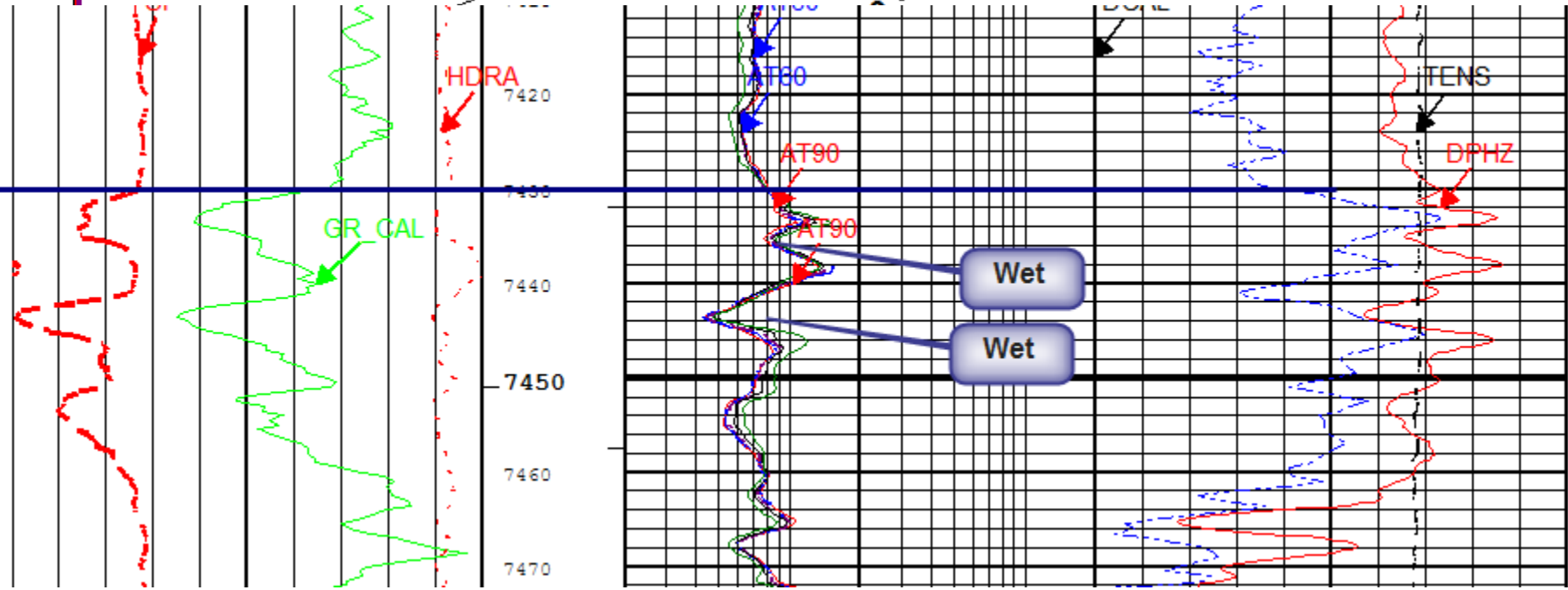
C.I. = 25'

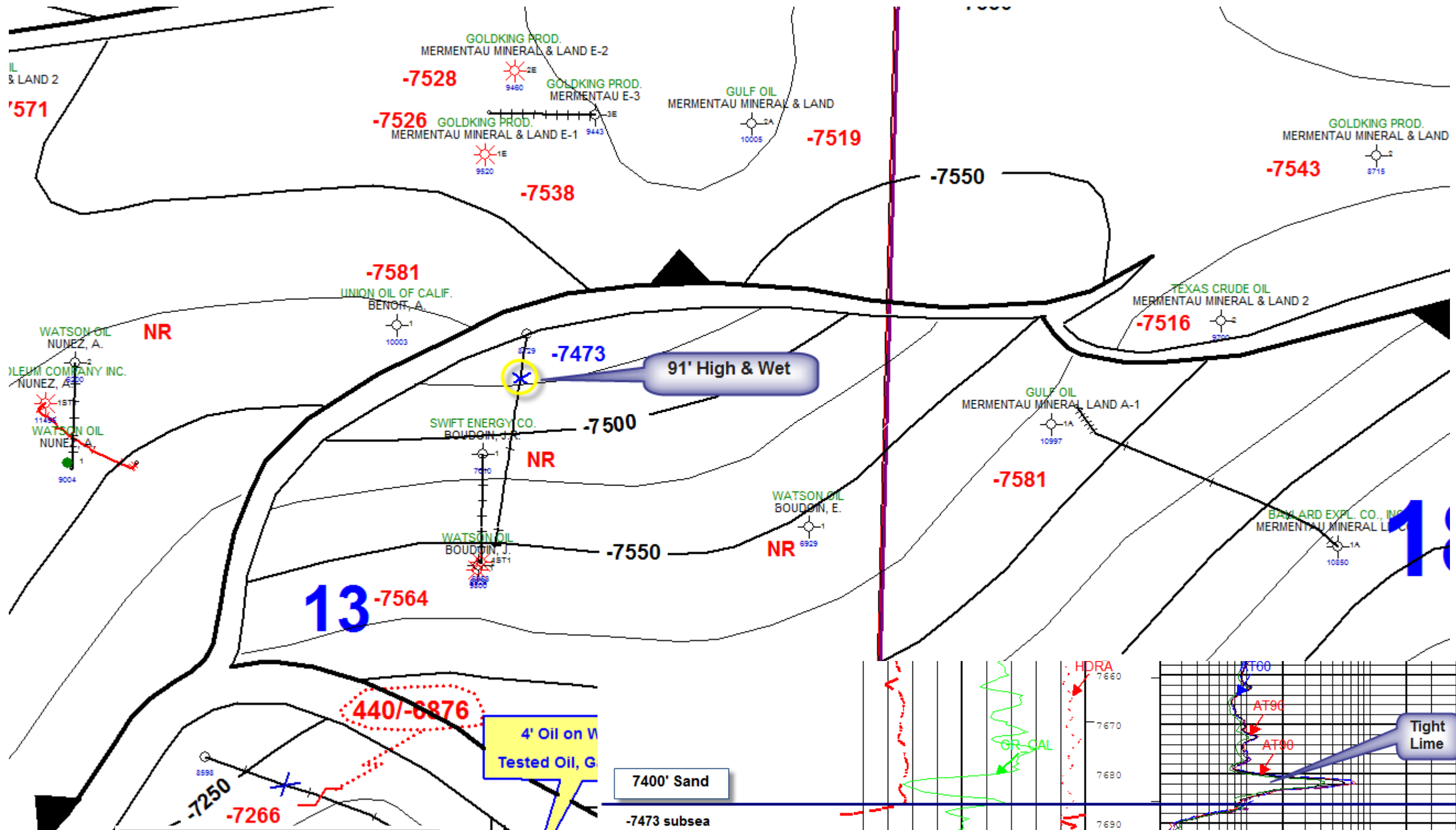


Little Chenier
Triangle Prospect

7050' Sand

C.I. = 25'





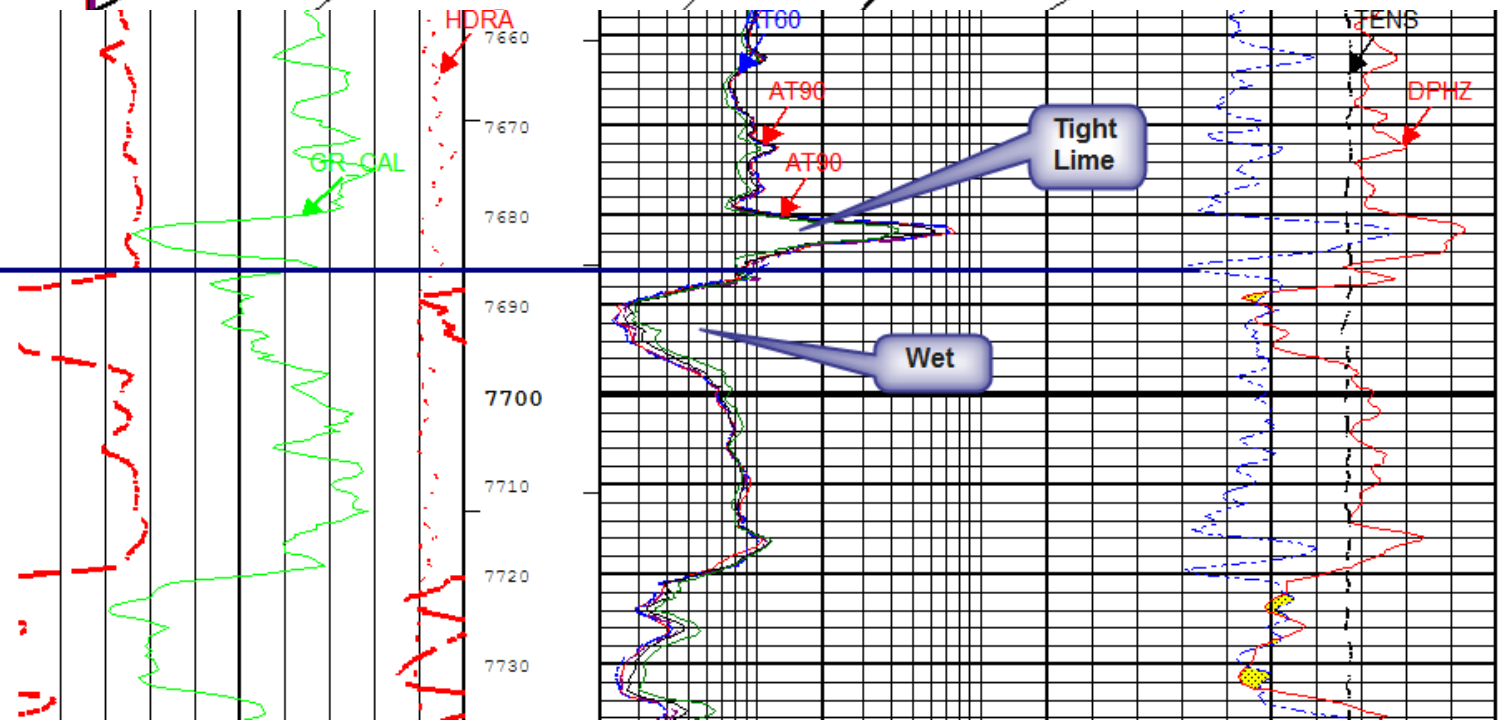
Little Chenier
Triangle Prospect

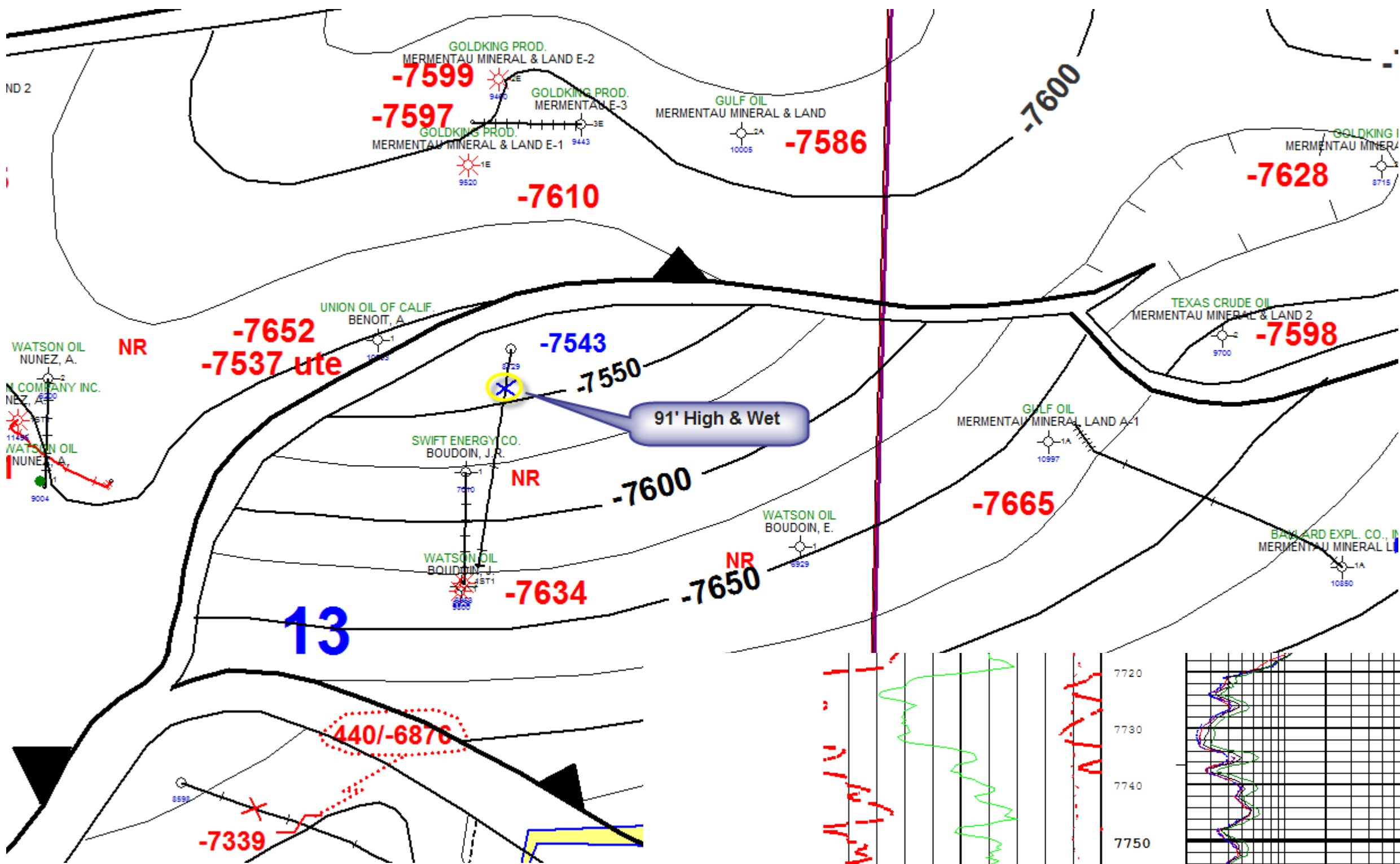
7400' Sand

C.I. = 25'

7400' Sand

-7473 subsea





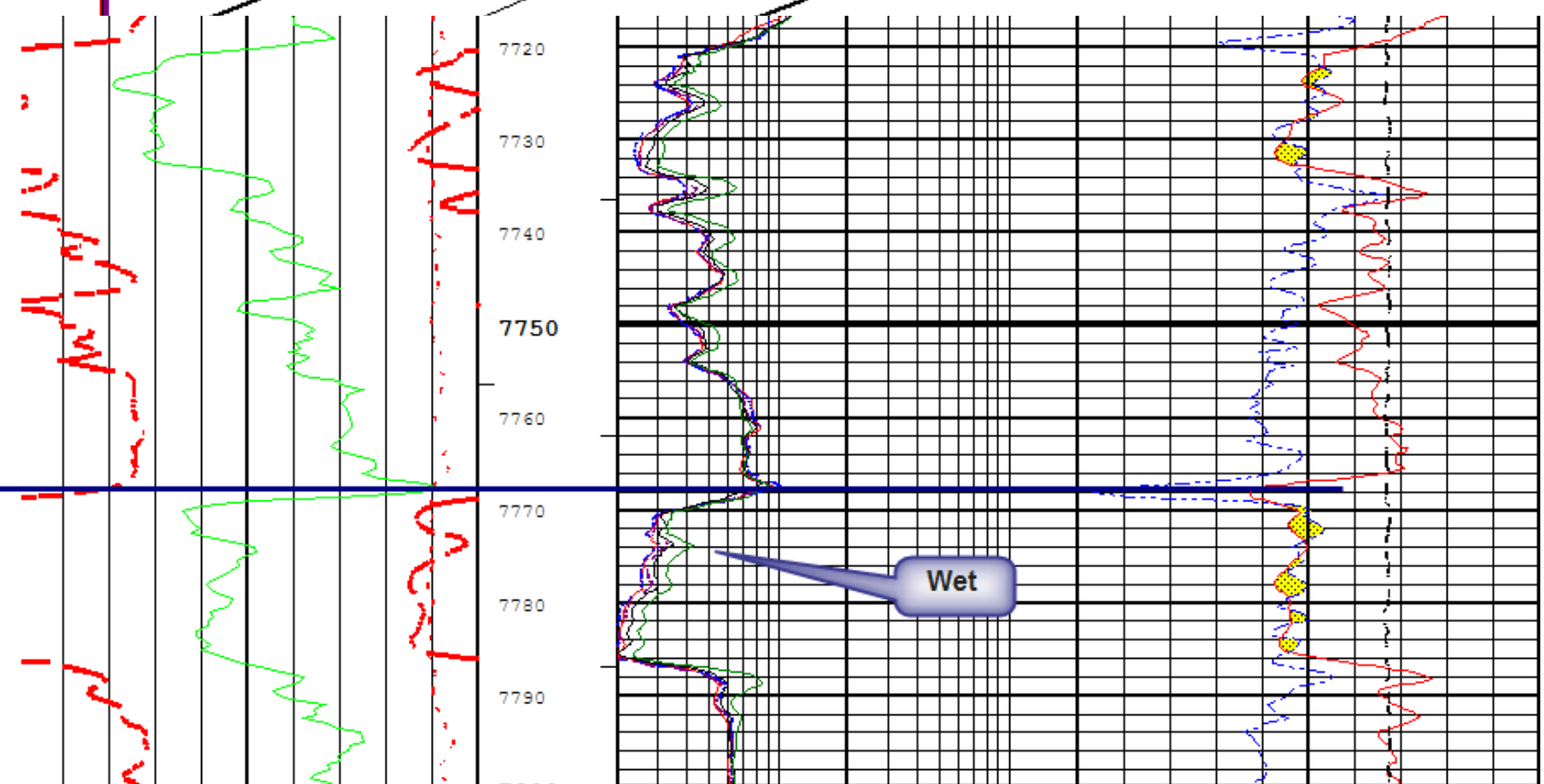
Little Chenier
Triangle Prospect

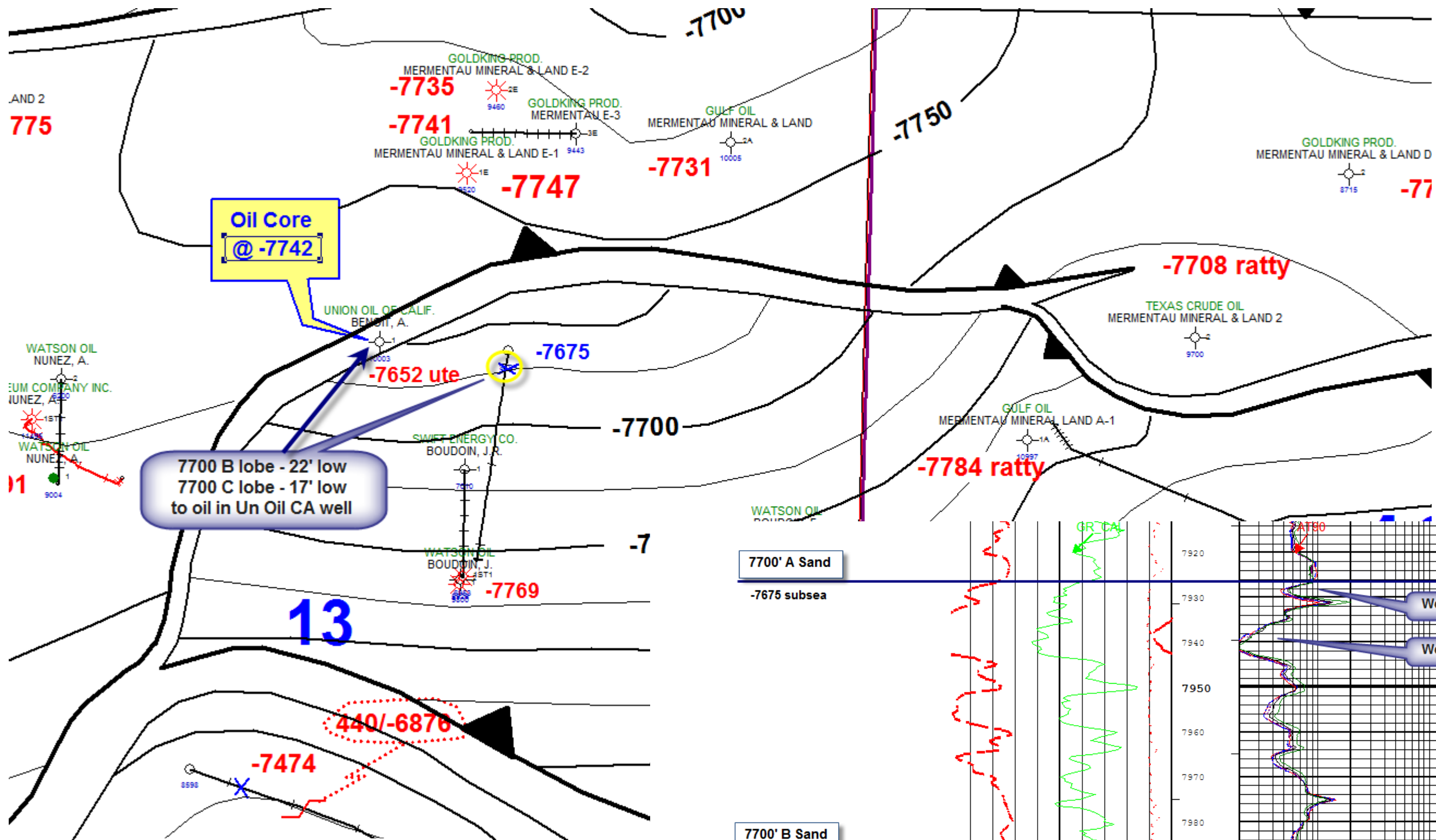
7500' Sand

C.I. = 25'

7500' Sand

-7543 subsea





7700 B lobe - 22' low
7700 C lobe - 17' low
to oil in Un Oil CA well

Little Chenier
Triangle Prospect
7700' (A lobe) Sand
C.I. = 25'

