

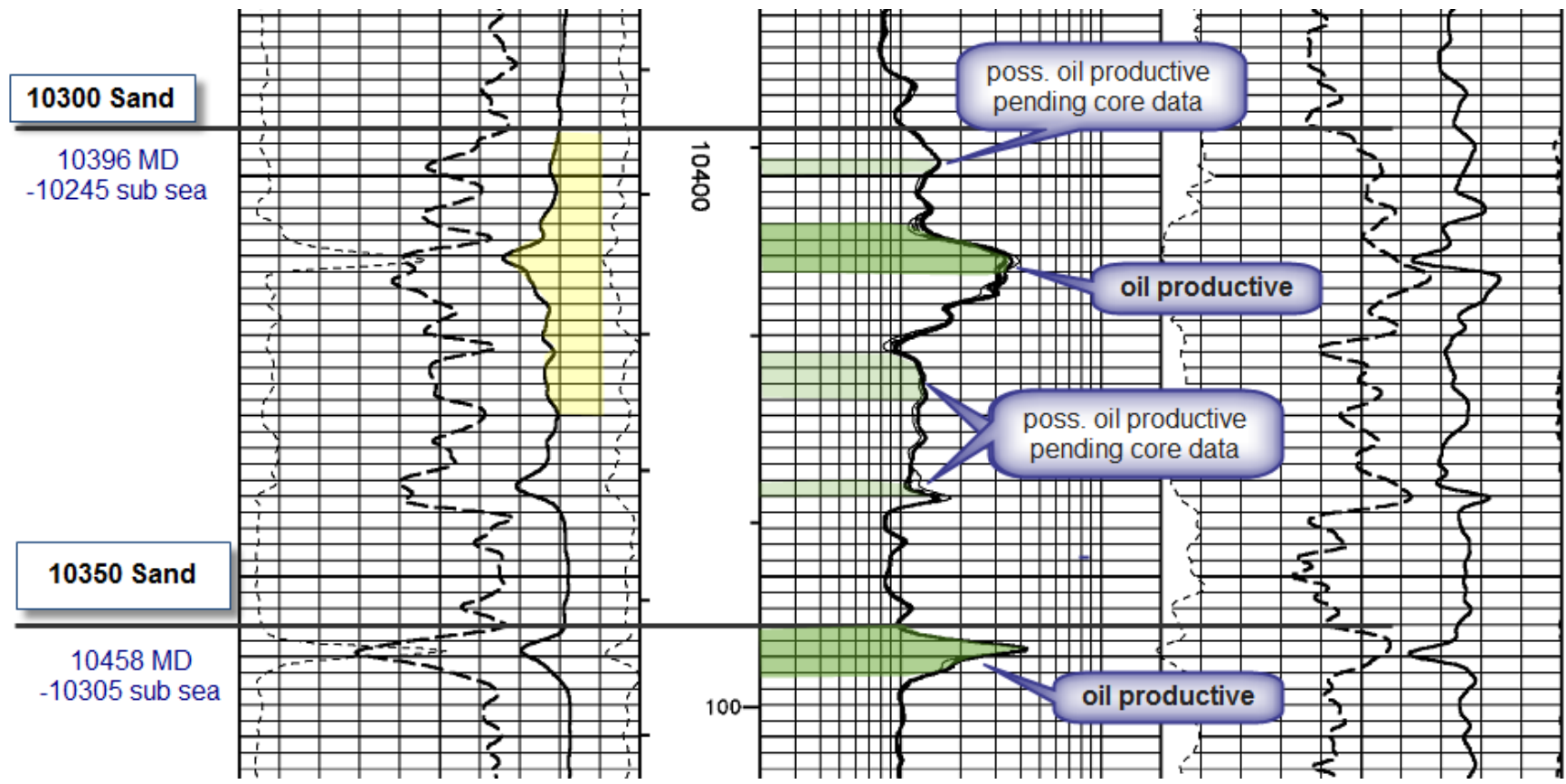
Smith Production Company  
 LARCO 35 No. 1  
 Perreau Island Field  
 Cameron Parish, Louisiana  
 Section 026, T12S-R04W  
 API No.: 17023230950000



FILE NO.: LL-55475  
 ANALYST: L. Simon  
 TECH: A. Broussard  
 DATE: December 9, 2011  
 CORES: Baker Atlas

**PERCUSSION SIDEWALL CORE ANALYSIS**

| In. Rec. | Sample Depth Feet | Permeability mD | Porosity % | Pore Volume Saturation |         | Prob Prod | Bulk Volume Saturation |       | Comb. Gas | Crit. Water % | QA Factor | Core Lithology                         |
|----------|-------------------|-----------------|------------|------------------------|---------|-----------|------------------------|-------|-----------|---------------|-----------|----------------------------------------|
|          |                   |                 |            | Oil %                  | Water % |           | Oil %                  | Gas % |           |               |           |                                        |
| 0.5      | 10213.0           | 6.5             | 18.6       | 0.0                    | 84.4    | (6)       | 0.0                    | 2.9   | 0         | 67            | 2fm       | Sd vfg slty shy foss min flu           |
| 1.5      | 10214.0           | <0.1            | 14.0       | 0.0                    | 85.7    | (6)       | 0.0                    | 2.0   | 0         | 73            | 1         | Sd vfg slty vshy scalc no flu          |
| 1.3      | 10397.0           | 3.9             | 16.4       | 0.0                    | 81.3    | (6)       | 0.0                    | 3.1   | 0         | 65            | 2m        | Sd vfg slty vshy calc no flu           |
| 1.0      | 10398.0           | <0.1            | 13.9       | 0.0                    | 90.0    | (6)       | 0.0                    | 1.4   | 0         | 73            | 1         | Sd vfg slty vshy vcalc no flu          |
| 1.0      | 10399.0           | <0.1            | 13.4       | 0.0                    | 89.5    | (6)       | 0.0                    | 1.4   | 0         | 72            | 1         | Sd vfg slty vshy scalc no flu          |
| 1.3      | 10404.0           | 3.7             | 16.2       | 4.8                    | 81.6    | (6)       | 0.8                    | 2.2   | 24        | 65            | 1         | Sd vfg slty vshy lam scalc stks yl flu |
| 0.5      | 10405.0           | 145.0           | 26.3       | 5.8                    | 73.3    | Cond      | 1.5                    | 5.5   | 16        | 48            | 2m        | Sd vfg vsly sshy calc dull yl flu      |
| 1.0      | 10406.0           | 335.0           | 26.6       | 13.3                   | 66.6    | Oil       | 3.5                    | 5.3   | 16        | 41            | 2m        | Sd vfg slty sshy scalc yl flu 43° API  |
| 1.0      | 10409.0           | 130.0           | 25.1       | 7.8                    | 70.6    | Oil       | 2.0                    | 5.4   | 12        | 49            | 2m        | Sd vfg vsly shy lam vcalc stks yl flu  |
| 1.0      | 10410.0           | 33.0            | 20.8       | 4.5                    | 76.4    | Wtr       | 0.9                    | 4.0   | 20        | 57            | 1         | Sd vfg vsly shy lam vcalc stks yl flu  |
| 1.0      | 10411.0           | 14.0            | 20.4       | 2.9                    | 79.2    | Wtr       | 0.6                    | 3.7   | 20        | 63            | 1         | Sd vfg vsly shy lam vcalc stks yl flu  |
| 1.0      | 10412.0           | 8.8             | 19.3       | 3.4                    | 82.8    | (6)       | 0.7                    | 2.7   | 10        | 66            | 1         | Sd vfg slty vshy lam scalc stks yl flu |
| 0.8      | 10414.0           | 7.9             | 18.8       | 0.0                    | 87.1    | (6)       | 0.0                    | 2.4   | 0         | 67            | 1         | Sd vfg slty vshy scalc no flu          |
| 1.3      | 10415.0           | 2.4             | 15.3       | 3.0                    | 83.9    | (6)       | 0.5                    | 2.0   | 0         | 65            | 1         | Sd vfg slty vshy lam calc stks yl flu  |
| 1.0      | 10417.0           | 6.6             | 17.2       | 0.0                    | 80.8    | (6)       | 0.0                    | 3.3   | 0         | 64            | 1         | Sd vfg slty vshy lam calc no flu       |
|          | 10422.0           |                 |            |                        |         |           |                        |       |           |               |           | Misfire                                |
| 1.3      | 10424.0           | 7.1             | 18.4       | 0.0                    | 83.6    | (6)       | 0.0                    | 3.0   | 0         | 66            | 1         | Sd vfg slty vshy scalc no flu          |
| 0.8      | 10425.0           | 6.3             | 17.2       | 0.0                    | 78.3    | (6)       | 0.0                    | 3.7   | 0         | 65            | 1         | Sd vfg slty vshy scalc no flu          |
| 1.3      | 10426.0           | 0.3             | 13.5       | 0.0                    | 87.5    | (6)       | 0.0                    | 1.7   | 0         | 70            | 1         | Sd vfg slty vshy scalc no flu          |
| 0.5      | 10427.0           | 0.1             | 13.2       | 0.0                    | 87.8    | (6)       | 0.0                    | 1.6   | 0         | 71            | 1         | Sd vfg slty vshy scalc no flu          |



Smith Production Company  
 LARCO 35 No. 1  
 Perreau Island Field  
 Cameron Parish, Louisiana  
 Section 026, T12S-R04W  
 API No.: 17023230950000



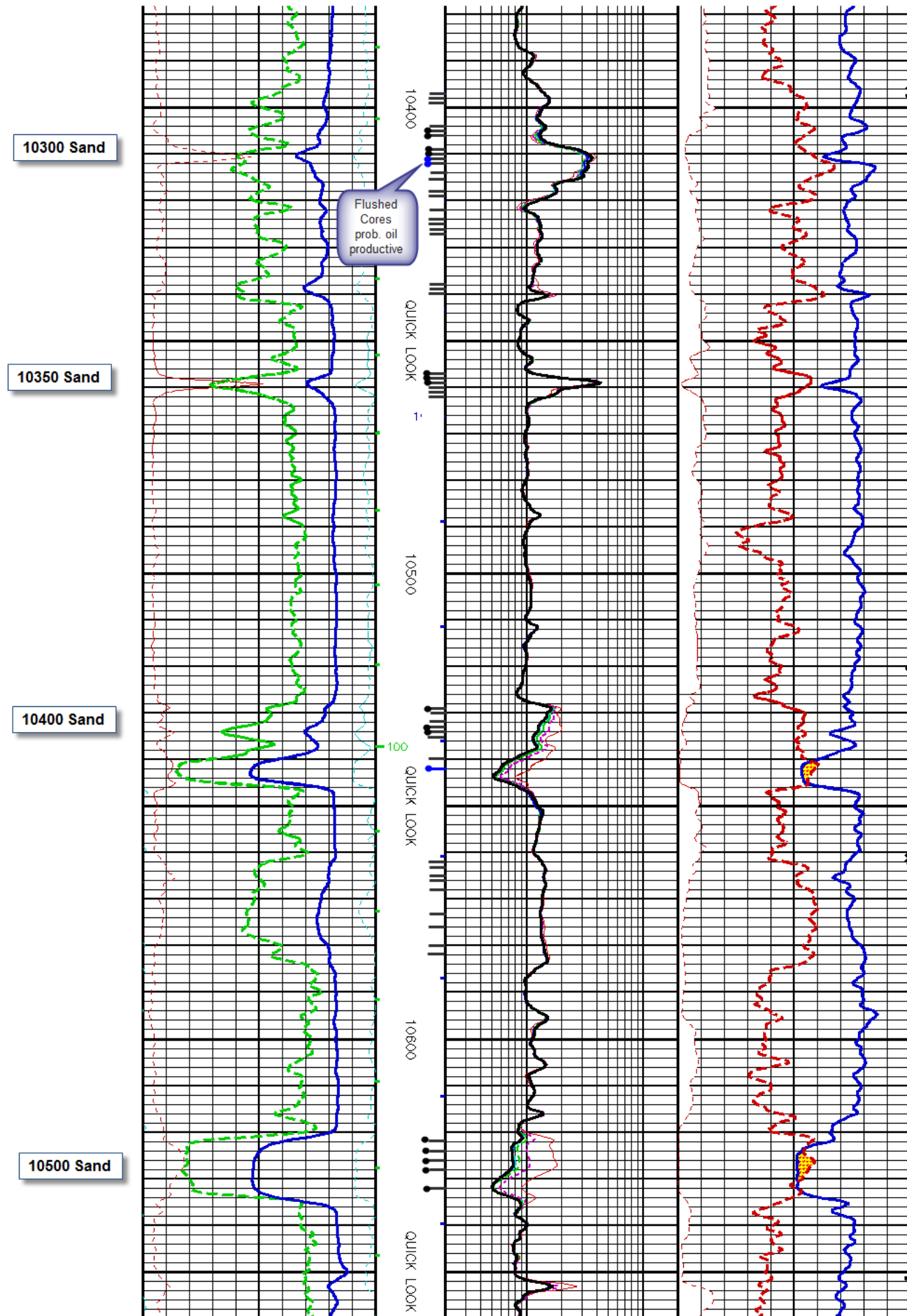
FILE NO.: LL-55475  
 ANALYST: L. Simon  
 TECH: A. Broussard  
 DATE: December 9, 2011  
 CORES: Baker Atlas

**PERCUSSION SIDEWALL CORE ANALYSIS**

| In. Rec.           | Sample Depth Feet | Permeability mD | Porosity % | Pore Volume |         | Prob Prod | Bulk Volume |       | Comb. Gas | Cr. Water % | QA Factor | Core Lithology     |                                          |
|--------------------|-------------------|-----------------|------------|-------------|---------|-----------|-------------|-------|-----------|-------------|-----------|--------------------|------------------------------------------|
|                    |                   |                 |            | Saturation  |         |           | Saturation  |       |           |             |           |                    |                                          |
|                    |                   |                 |            | Oil %       | Water % |           | Oil %       | Gas % |           |             |           |                    |                                          |
| 1.8                | 10438.0           |                 |            |             |         |           |             |       | 0         | 1           |           | Shale dk gy no flu |                                          |
| 1.8                | 10439.0           |                 |            |             |         |           |             |       | 0         | 1           |           | Shale dk gy no flu |                                          |
| 1.5                | 10440.0           |                 |            |             |         |           |             |       | 3         | 1           |           | Shale dk gy no flu |                                          |
| <b>10350' Sand</b> | 1.0               | 10457.0         | 13.0       | 20.1        | 4.7     | 76.7      | Cond        | 0.9   | 3.7       | 20          | 65        | 1                  | Sd vfg slty vshy lam scalc stks yl flu   |
|                    | 0.8               | 10458.0         | 10.0       | 19.9        | 3.8     | 79.4      | Cond        | 0.8   | 3.3       | 10          | 66        | 2m                 | Sd vfg slty vshy lam scalc stks yl flu   |
|                    | 0.5               | 10459.0         | 51.0       | 23.6        | 2.8     | 67.3      | Cond        | 0.7   | 7.1       | 27          | 57        | 2m                 | Sd vfg slty shy calc mott yl flu         |
|                    | 1.3               | 10460.0         | <0.1       | 14.4        | 0.0     | 82.8      | (6)         | 0.0   | 2.5       | 0           | 73        | 1                  | Sd vfg slty vshy vcalc no flu            |
|                    | 1.5               | 10461.0         | <0.1       | 13.2        | 0.0     | 91.3      | (6)         | 0.0   | 1.1       | 0           | 72        | 1                  | Sd vfg slty vshy vcalc no flu            |
|                    | 1.8               | 10462.0         | <0.1       | 12.9        | 0.0     | 91.9      | (6)         | 0.0   | 1.0       | 0           | 72        | 1                  | Sd vfg slty vshy vcalc no flu            |
| <b>10400' Sand</b> | 0.8               | 10529.0         | 53.0       | 24.3        | 8.8     | 60.3      | Oil         | 2.1   | 7.5       | 20          | 57        | 1                  | Sd vfg slty shy lam stks yl flu          |
|                    | 0.5               | 10530.0         | 1.5        | 14.8        | 0.0     | 77.4      | (6)         | 0.0   | 3.3       | 0           | 65        | 1                  | Sd vfg slty vshy lam scalc no flu        |
|                    |                   | 10532.0         |            |             |         |           |             |       |           |             |           |                    | Misfire                                  |
|                    | 0.8               | 10533.0         | 12.0       | 20.7        | 7.4     | 78.2      | Oil         | 1.5   | 3.0       | 0           | 66        | 1                  | Sd vfg slty vshy lam scalc stks yl flu   |
|                    | 1.0               | 10534.0         | 78.0       | 23.2        | 10.4    | 70.7      | Oil         | 2.4   | 4.4       | 35          | 52        | 1                  | Sd vfg vslty shy lam stks yl flu 45° API |
|                    | 0.8               | 10535.0         | 6.5        | 18.9        | 1.3     | 83.8      | (6)         | 0.3   | 2.8       | 0           | 67        | 1                  | Sd vfg vslty vshy ft yl flu              |
|                    | 0.8               | 10542.0         | 195.0      | 26.0        | 3.6     | 78.6      | Wtr         | 0.9   | 4.7       | 6           | 45        | 2m                 | Sd vfg vslty sshy yl flu                 |
|                    | 0.8               | 10562.0         | 8.0        | 18.7        | 0.0     | 84.9      | (6)         | 0.0   | 2.8       | 0           | 67        | 1                  | Sd vfg vslty vshy no flu                 |
|                    | 1.0               | 10563.0         | 0.8        | 14.9        | 0.0     | 91.8      | (6)         | 0.0   | 1.2       | 0           | 69        | 1                  | Sd vfg slty vshy no flu                  |
|                    | 1.0               | 10565.0         | 0.5        | 14.7        | 0.0     | 87.3      | (6)         | 0.0   | 1.9       | 0           | 70        | 1                  | Sd vfg slty vshy no flu                  |



**PERCUSSION SIDEWALL CORE ANALYSIS**



| In. Rec. | Sample Depth Feet | Permeability mD | Porosity % | Pore Volume Saturation |         | Prob Prod | Bulk Volume Saturation |       | Comb. Gas | Crit. Water % | QA Factor | Core Lithology                           |
|----------|-------------------|-----------------|------------|------------------------|---------|-----------|------------------------|-------|-----------|---------------|-----------|------------------------------------------|
|          |                   |                 |            | Oil %                  | Water % |           | Oil %                  | Gas % |           |               |           |                                          |
|          |                   |                 |            |                        |         |           |                        |       |           |               |           |                                          |
| 0.5      | 10213.0           | 6.5             | 18.6       | 0.0                    | 84.4    | (6)       | 0.0                    | 2.9   | 0         | 67            | 2fm       | Sd vfg slty shy foss min flu             |
| 1.5      | 10214.0           | <0.1            | 14.0       | 0.0                    | 85.7    | (6)       | 0.0                    | 2.0   | 0         | 73            | 1         | Sd vfg slty vshy scalc no flu            |
| 1.3      | 10397.0           | 3.9             | 16.4       | 0.0                    | 81.3    | (6)       | 0.0                    | 3.1   | 0         | 65            | 2m        | Sd vfg slty vshy calc no flu             |
| 1.0      | 10398.0           | <0.1            | 13.9       | 0.0                    | 90.0    | (6)       | 0.0                    | 1.4   | 0         | 73            | 1         | Sd vfg slty vshy vcalc no flu            |
| 1.0      | 10399.0           | <0.1            | 13.4       | 0.0                    | 89.5    | (6)       | 0.0                    | 1.4   | 0         | 72            | 1         | Sd vfg slty vshy scalc no flu            |
| 1.3      | 10404.0           | 3.7             | 16.2       | 4.8                    | 81.6    | (6)       | 0.8                    | 2.2   | 24        | 65            | 1         | Sd vfg slty vshy lam scalc stks yl flu   |
| 0.5      | 10405.0           | 145.0           | 26.3       | 5.8                    | 73.3    | Cond      | 1.5                    | 5.5   | 16        | 48            | 2m        | Sd vfg vsity sshy calc dull yl flu       |
| 1.0      | 10406.0           | 335.0           | 26.6       | 13.3                   | 66.6    | Oil       | 3.5                    | 5.3   | 16        | 41            | 2m        | Sd vfg slty sshy scalc yl flu 43° API    |
| 1.0      | 10409.0           | 130.0           | 25.1       | 7.8                    | 70.6    | Oil       | 2.0                    | 5.4   | 12        | 49            | 2m        | Sd vfg vsity shy lam vcalc stks yl flu   |
| 1.0      | 10410.0           | 33.0            | 20.8       | 4.5                    | 76.4    | Wtr       | 0.9                    | 4.0   | 20        | 57            | 1         | Sd vfg vsity shy lam vcalc stks yl flu   |
| 1.0      | 10411.0           | 14.0            | 20.4       | 2.9                    | 79.2    | Wtr       | 0.6                    | 3.7   | 20        | 63            | 1         | Sd vfg vsity shy lam vcalc stks yl flu   |
| 1.0      | 10412.0           | 8.8             | 19.3       | 3.4                    | 82.8    | (6)       | 0.7                    | 2.7   | 10        | 66            | 1         | Sd vfg slty vshy lam scalc stks yl flu   |
| 0.8      | 10414.0           | 7.9             | 18.8       | 0.0                    | 87.1    | (6)       | 0.0                    | 2.4   | 0         | 67            | 1         | Sd vfg slty vshy scalc no flu            |
| 1.3      | 10415.0           | 2.4             | 15.3       | 3.0                    | 83.9    | (6)       | 0.5                    | 2.0   | 0         | 65            | 1         | Sd vfg slty vshy lam calc stks yl flu    |
| 1.0      | 10417.0           | 6.6             | 17.2       | 0.0                    | 80.8    | (6)       | 0.0                    | 3.3   | 0         | 64            | 1         | Sd vfg slty vshy lam calc no flu         |
|          | 10422.0           |                 |            |                        |         |           |                        |       |           |               |           | Misfire                                  |
| 1.3      | 10424.0           | 7.1             | 18.4       | 0.0                    | 83.6    | (6)       | 0.0                    | 3.0   | 0         | 66            | 1         | Sd vfg slty vshy scalc no flu            |
| 0.8      | 10425.0           | 6.3             | 17.2       | 0.0                    | 78.3    | (6)       | 0.0                    | 3.7   | 0         | 65            | 1         | Sd vfg slty vshy scalc no flu            |
| 1.3      | 10426.0           | 0.3             | 13.5       | 0.0                    | 87.5    | (6)       | 0.0                    | 1.7   | 0         | 70            | 1         | Sd vfg slty vshy scalc no flu            |
| 0.5      | 10427.0           | 0.1             | 13.2       | 0.0                    | 87.8    | (6)       | 0.0                    | 1.6   | 0         | 71            | 1         | Sd vfg slty vshy scalc no flu            |
| 1.8      | 10438.0           |                 |            |                        |         |           |                        |       |           | 0             | 1         | Shale dk gy no flu                       |
| 1.8      | 10439.0           |                 |            |                        |         |           |                        |       |           | 0             | 1         | Shale dk gy no flu                       |
| 1.5      | 10440.0           |                 |            |                        |         |           |                        |       |           | 3             | 1         | Shale dk gy no flu                       |
| 1.0      | 10457.0           | 13.0            | 20.1       | 4.7                    | 76.7    | Cond      | 0.9                    | 3.7   | 20        | 65            | 1         | Sd vfg slty vshy lam scalc stks yl flu   |
| 0.8      | 10458.0           | 10.0            | 19.9       | 3.8                    | 79.4    | Cond      | 0.8                    | 3.3   | 10        | 66            | 2m        | Sd vfg slty vshy lam scalc stks yl flu   |
| 0.5      | 10459.0           | 51.0            | 23.6       | 2.8                    | 67.3    | Cond      | 0.7                    | 7.1   | 27        | 57            | 2m        | Sd vfg slty shy calc mott yl flu         |
| 1.3      | 10460.0           | <0.1            | 14.4       | 0.0                    | 82.8    | (6)       | 0.0                    | 2.5   | 0         | 73            | 1         | Sd vfg slty vshy vcalc no flu            |
| 1.5      | 10461.0           | <0.1            | 13.2       | 0.0                    | 91.3    | (6)       | 0.0                    | 1.1   | 0         | 72            | 1         | Sd vfg slty vshy vcalc no flu            |
| 1.8      | 10462.0           | <0.1            | 12.9       | 0.0                    | 91.9    | (6)       | 0.0                    | 1.0   | 0         | 72            | 1         | Sd vfg slty vshy vcalc no flu            |
| 0.8      | 10529.0           | 53.0            | 24.3       | 8.8                    | 60.3    | Oil       | 2.1                    | 7.5   | 20        | 57            | 1         | Sd vfg slty shy lam stks yl flu          |
| 0.5      | 10530.0           | 1.5             | 14.8       | 0.0                    | 77.4    | (6)       | 0.0                    | 3.3   | 0         | 65            | 1         | Sd vfg slty vshy lam scalc no flu        |
|          | 10532.0           |                 |            |                        |         |           |                        |       |           |               |           | Misfire                                  |
| 0.8      | 10533.0           | 12.0            | 20.7       | 7.4                    | 78.2    | Oil       | 1.5                    | 3.0   | 0         | 66            | 1         | Sd vfg slty vshy lam scalc stks yl flu   |
| 1.0      | 10534.0           | 78.0            | 23.2       | 10.4                   | 70.7    | Oil       | 2.4                    | 4.4   | 35        | 52            | 1         | Sd vfg vsity shy lam stks yl flu 45° API |
| 0.8      | 10535.0           | 6.5             | 18.9       | 1.3                    | 83.8    | (6)       | 0.3                    | 2.8   | 0         | 67            | 1         | Sd vfg vsity vshy ft yl flu              |
| 0.8      | 10542.0           | 195.0           | 26.0       | 3.6                    | 78.6    | Wtr       | 0.9                    | 4.7   | 6         | 45            | 2m        | Sd vfg vsity sshy yl flu                 |
| 0.8      | 10562.0           | 8.0             | 18.7       | 0.0                    | 84.9    | (6)       | 0.0                    | 2.8   | 0         | 67            | 1         | Sd vfg vsity vshy no flu                 |
| 1.0      | 10563.0           | 0.8             | 14.9       | 0.0                    | 91.8    | (6)       | 0.0                    | 1.2   | 0         | 69            | 1         | Sd vfg slty vshy no flu                  |
| 1.0      | 10565.0           | 0.5             | 14.7       | 0.0                    | 87.3    | (6)       | 0.0                    | 1.9   | 0         | 70            | 1         | Sd vfg slty vshy no flu                  |
| 1.0      | 10566.0           | 0.2             | 13.9       | 0.0                    | 91.5    | (6)       | 0.0                    | 1.2   | 0         | 71            | 1         | Sd vfg slty vshy no flu                  |
| 1.0      | 10568.0           | 6.2             | 17.2       | 0.0                    | 89.7    | (6)       | 0.0                    | 1.8   | 0         | 65            | 1         | Sd vfg slty vshy no flu                  |
| 1.0      | 10573.0           | 8.3             | 18.2       | 0.0                    | 85.7    | (6)       | 0.0                    | 2.6   | 0         | 65            | 1         | Sd vfg slty vshy no flu                  |
| 0.8      | 10576.0           | 8.9             | 18.7       | 0.0                    | 83.0    | (6)       | 0.0                    | 3.2   | 0         | 66            | 1         | Sd vfg slty vshy no flu                  |
| 1.0      | 10580.0           | 1.3             | 14.3       | 0.0                    | 83.6    | (6)       | 0.0                    | 2.3   | 0         | 66            | 1         | Sd vfg slty vshy no flu                  |
| 1.0      | 10582.0           | 2.0             | 14.9       | 0.0                    | 82.2    | (6)       | 0.0                    | 2.7   | 0         | 65            | 1         | Sd vfg slty vshy no flu                  |
| 0.5      | 10622.0           | 205.0           | 27.3       | 15.8                   | 61.4    | Oil       | 4.3                    | 6.2   | 0         | 46            | 2m        | Sd vfg vsity sshy yl flu 41° API         |
| 0.5      | 10624.0           | 355.0           | 27.2       | 16.0                   | 59.1    | Oil       | 4.4                    | 6.8   | 0         | 41            | 2m        | Sd vfg slty sshy dull yl flu             |
| 0.5      | 10626.0           | 350.0           | 27.0       | 13.8                   | 65.1    | Oil       | 3.7                    | 5.7   | 20        | 41            | 2m        | Sd vfg slty sshy yl flu                  |
| 0.8      | 10628.0           | 320.0           | 27.3       | 14.6                   | 61.0    | Oil       | 4.0                    | 6.7   | 30        | 42            | 2m        | Sd vfg slty sshy yl flu 41° API          |
| 0.5      | 10632.0           | 365.0           | 27.7       | 7.1                    | 74.3    | Oil       | 2.0                    | 5.2   | 0         | 41            | 2m        | Sd vfg slty sshy dull yl flu             |