

**SW Lake Arthur Field
THUNDERBALL PROSPECT**

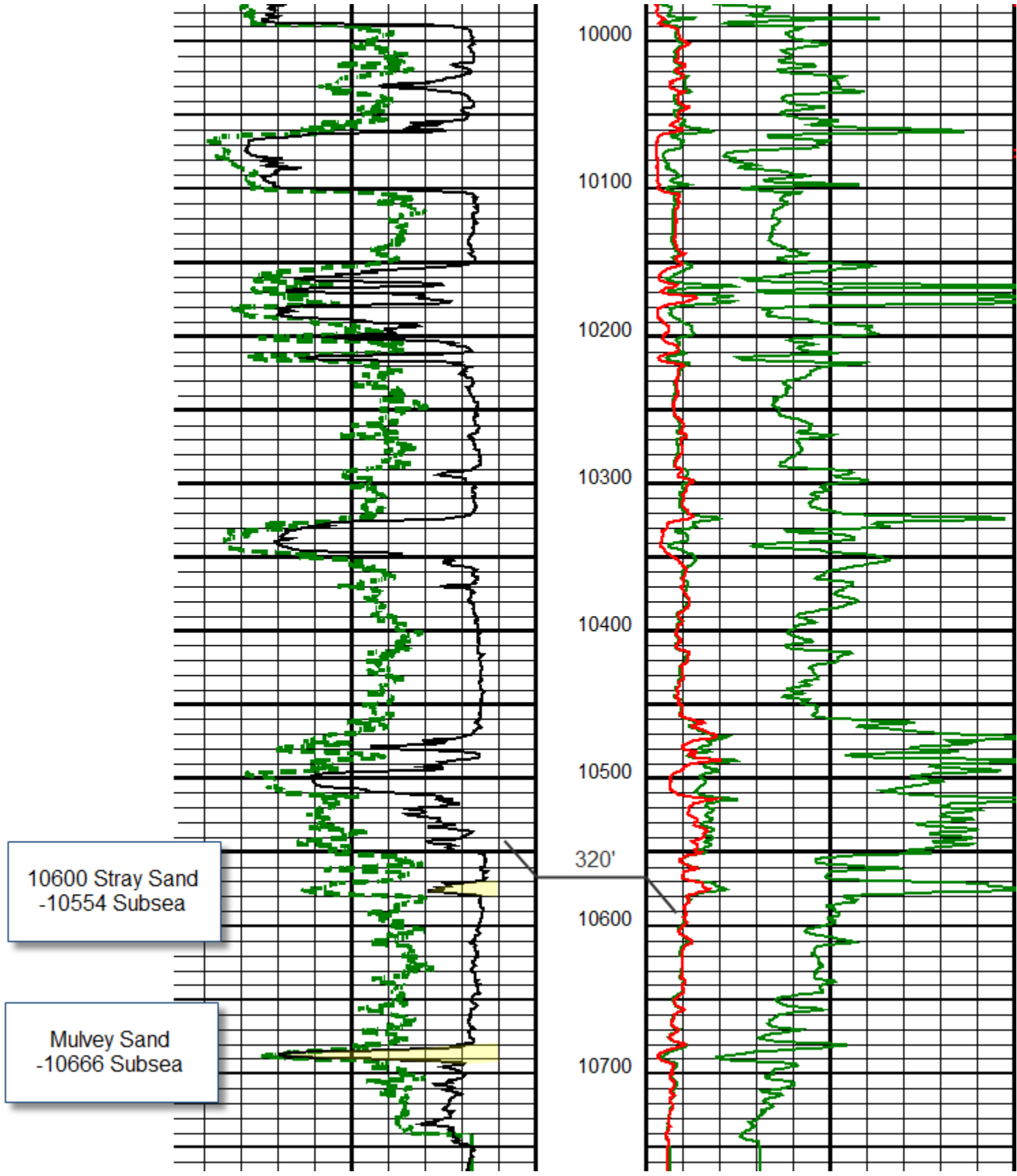
**Post Drill Results
12-19-11**

Unfortunately, we logged the Smith, LARCO 24-1 well Sunday morning and did not find any commercial hydrocarbons. Our objective sand, (Mulvey Sand) ran about 2' low to the Cockrell LARCO #1 sdtrk. Cores and log indicate water in this sand.

2 cores in the Lower Mulvey indicate condensate, however, this zone is very low perm and sand lenses are very thin. This zone is also low to the Cockrell well. Resistivity is 0.7 ohms which would indicate a high water cut.

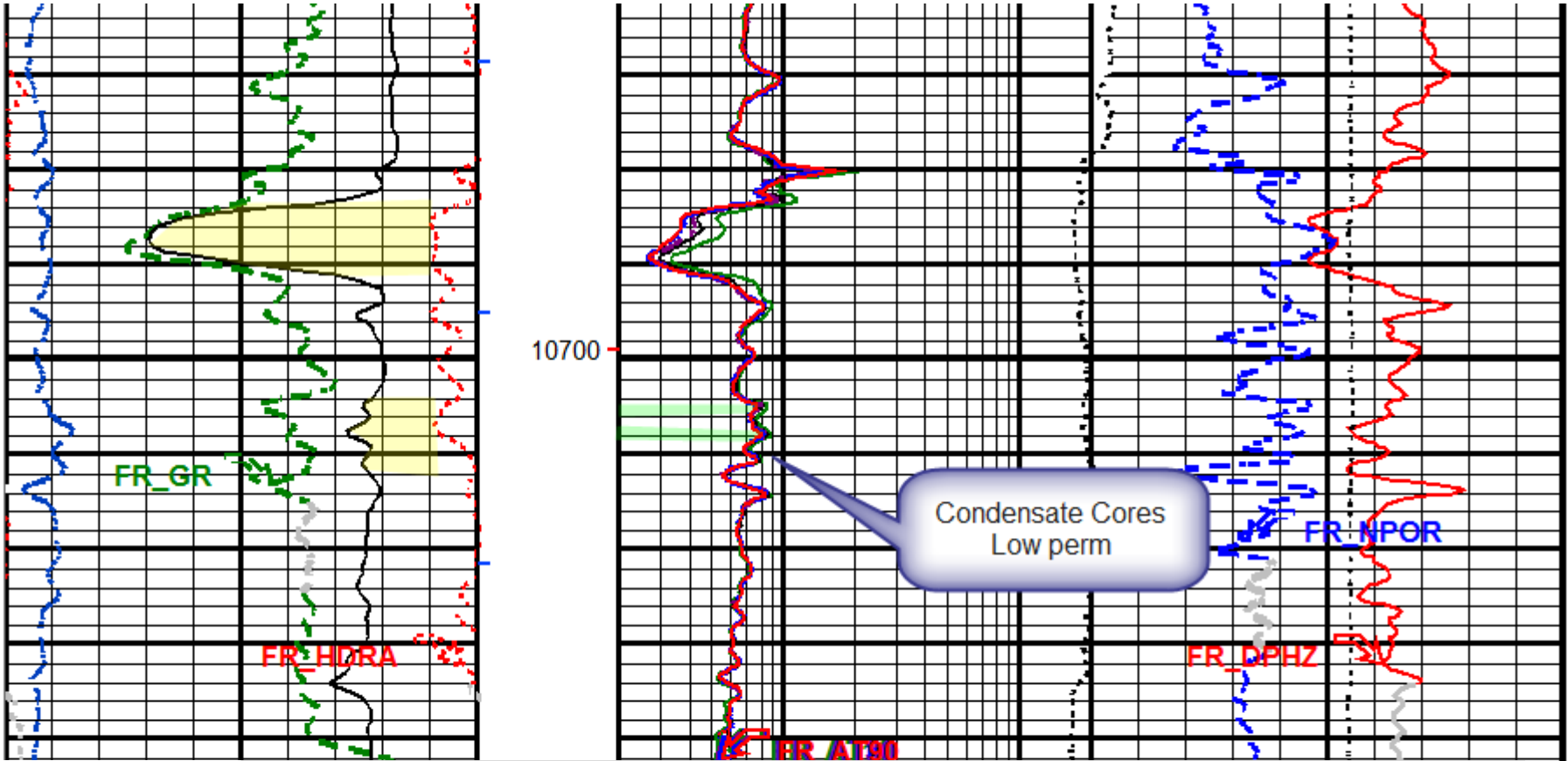
We did evaluate an interesting zone at 10570-80' which possibly looked productive on the log, however, cores show very low perm and porosity and water.

Smith Production Company recommends that we plug and abandon this well.



Mulvey Sand
-10666 Subsea

Lower
Mulvey Sand



Smith Production Company
LARCO 24 No. 1
Southwest Lake Arthur Field
Cameron Parish, Louisiana
Section 024, T12S-R04W
API No.: 17023231010000



FILE NO.: LL-55596
ANALYST: L. Simon
TECH: A. Broussard
DATE: December 18, 2011
CORES: Schlumberger

PERCUSSION SIDEWALL CORE ANALYSIS

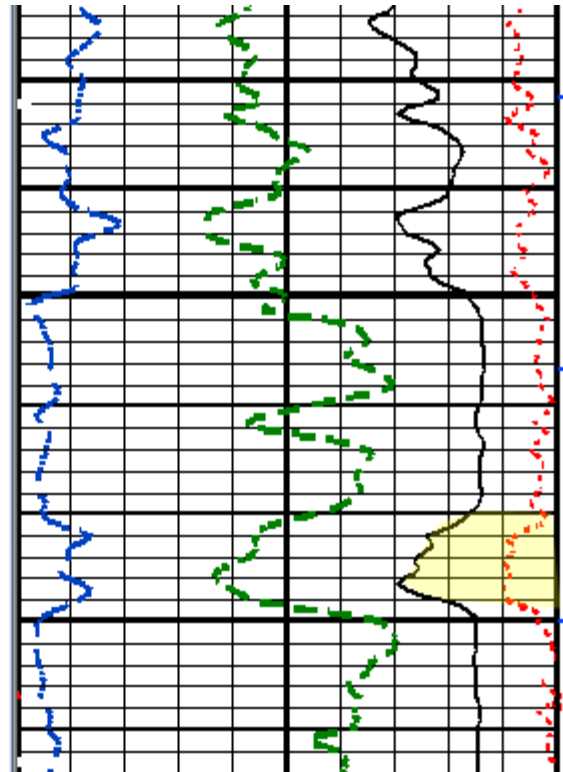
In. Rec.	Sample Depth Feet	Permeability mD	Porosity %	Pore Volume Saturation		Prob Prod	Bulk Volume Saturation		Comb. Gas %	Crit. Water %	QA Factor	Core Lithology
				Oil %	Water %		Oil %	Gas %				
	10576.5											Lost
	10576.5											Lost
	0.8 10577.0	33.0	21.8	0.7	79.4	Wtr	0.2	4.3	0	58	1	Sd vfg vslty shy vcalc vft flu
	0.3 10577.5	39.0	23.6	0.7	84.3	Wtr	0.2	3.5	0	60	3m	Sd vfg vslty shy ft flu
	0.3 10578.0								0		4m	Shale dk gy no flu
	10578.5											Lost
	0.8 10579.0	50.0	23.1	0.5	79.9	Wtr	0.1	4.5	0	56	1	Sd vfg vslty shy lam vft flu
	1.0 10680.0	1.1	16.0	0.9	80.5	(6)	0.1	3.0	6	69	1	Sd vfg slty vshy ft yl flu
	1.5 10682.0								0		1	Shale gy no flu
	1.0 10683.0								0		1	Shale gy no flu
	1.3 10684.0								0		1	Shale gy no flu
	1.5 10686.0	0.8	14.3	0.0	85.0	(6)	0.0	2.1	0	67	1	Sd vfg slty vshy no flu
	10690.0											Lost
	10704.0											Lost
	1.3 10705.0	32.0	21.7	5.6	62.4	Cond	1.2	6.9	17	61	1	Sd vfg vslty shy dull yl flu
	10706.0											Lost
	10707.0											Lost
	1.0 10708.0	125.0	25.2	3.4	69.6	Cond	0.9	6.8	65	49	1	Sd vfg vslty sshy lam stks dull yl flu
	1.5 10711.0	0.5	13.9	0.0	90.6	(6)	0.0	1.3	0	69	1	Sd vfg vslty vshy lam no flu
	1.0 10712.0	26.0	22.0	0.0	80.5	Wtr	0.0	4.3	0	62	1	Sd vfg vslty shy lam no flu

10600 Stray Sand

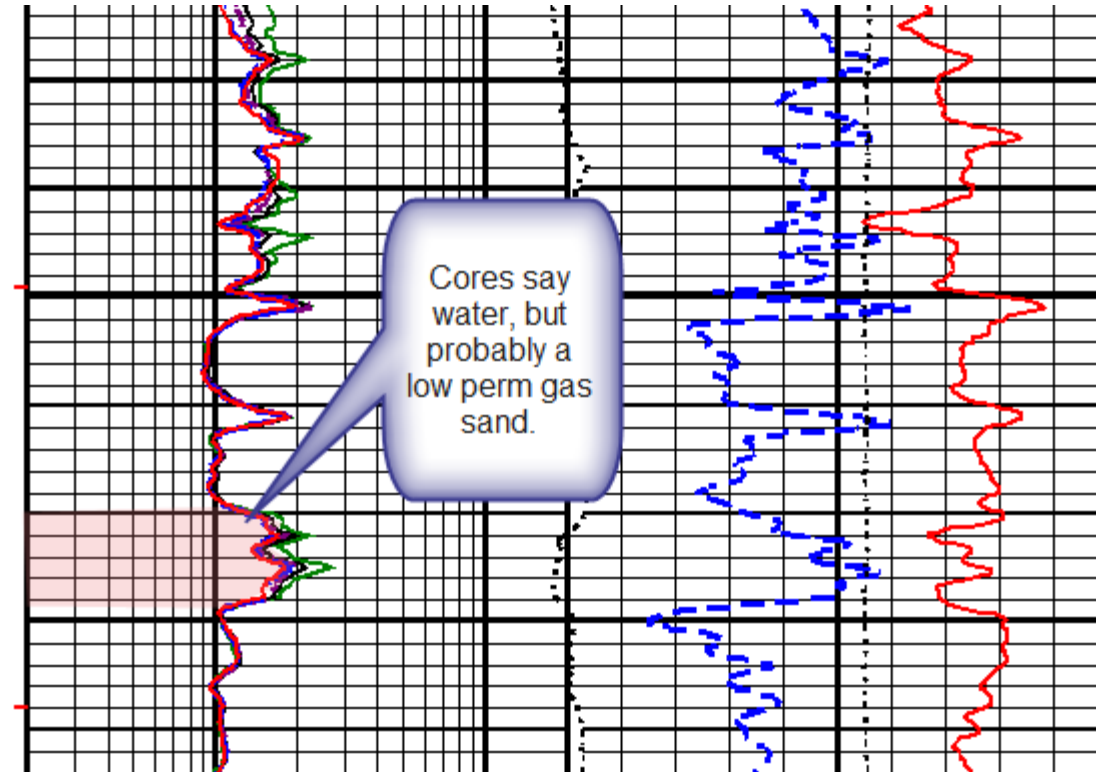
Mulvey Sand

Lower Mulvey

10600 Stray Sand
-10554 Subsea



Smith Production Company
LARCO 24 No. 1
Southwest Lake Arthur Field
Cameron Parish, Louisiana
Section 024, T12S-R04W
API No.: 17023231010000



FILE NO.: LL-55596
ANALYST: L. Simon
TECH: A. Broussard
DATE: December 18, 2011
CORES: Schlumberger

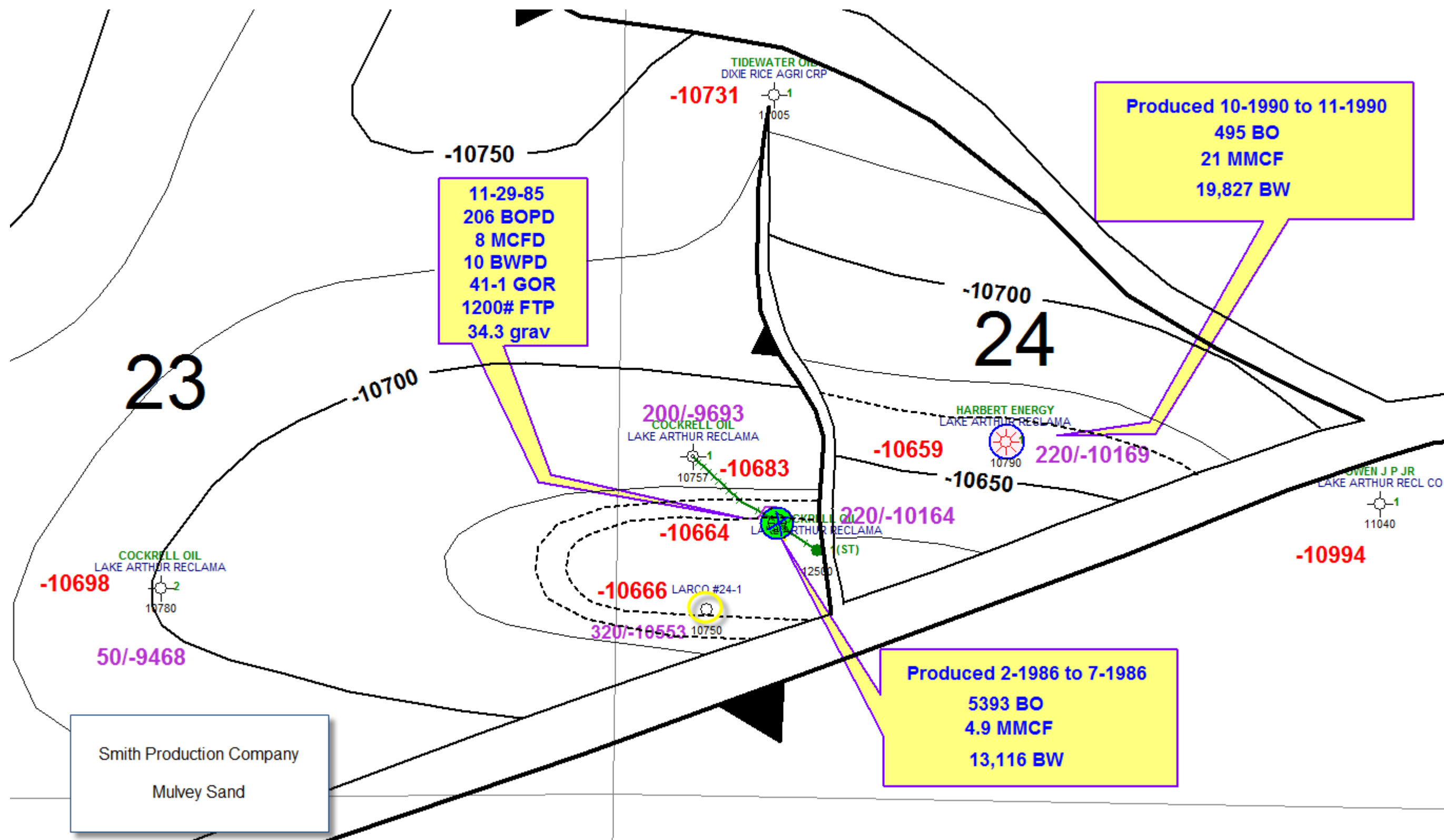


PERCUSSION SIDEWALL CORE ANALYSIS

In. Rec.	Sample Depth Feet	Permeability mD	Porosity %	Pore Volume Saturation		Prob Prod	Bulk Volume Saturation		Comb. Gas	Crit. Water %	QA Factor	Core Lithology
				Oil %	Water %		Oil %	Gas %				
	10570.0											Lost
	10570.0											Software Failure
	10571.0											Lost
	10571.0											Software Failure
	10572.0											Lost
	10572.0											Software Failure
1.3	10572.5	0.3	13.4	0.0	89.4	(6)	0.0	1.4	0	69	1	Sd vfg slty vshy calc no flu
	10572.5											Software Failure
1.5	10573.0	1.5	14.9	0.0	85.0	(6)	0.0	2.2	0	65	1	Sd vfg vslty vshy vcalc no flu
	10573.0											Software Failure
	10573.5											Lost
	10573.5											Software Failure
	10574.0											Lost
	10574.0											Software Failure
1.5	10574.5	2.2	15.1	0.0	80.8	(6)	0.0	2.9	0	65	1	Sd vfg slty vshy no flu
	10574.5											Software Failure
0.5	10575.0	24.0	20.9	0.0	79.4	Wtr	0.0	4.3	0	61	1	Sd vfg vslty shy lam no flu
	10575.0											Software Failure
1.3	10575.5	0.9	14.4	0.0	78.3	(6)	0.0	3.1	0	66	1	Sd vfg slty vshy scalc no flu
	10575.5											Software Failure
	10576.0											Lost
	10576.0											Software Failure
	10576.5											Lost
	10576.5											Lost
0.8	10577.0	33.0	21.8	0.7	79.4	Wtr	0.2	4.3	0	58	1	Sd vfg vslty shy vcalc vft flu
0.3	10577.5	39.0	23.6	0.7	84.3	Wtr	0.2	3.5	0	60	3m	Sd vfg vslty shy ft flu
0.3	10578.0							0			4m	Shale dk gy no flu
	10578.5											Lost
0.8	10579.0	50.0	23.1	0.5	79.9	Wtr	0.1	4.5	0	56	1	Sd vfg vslty shy lam vft flu

10600 Stray Sand

10600 Stray Sand



11-29-85
 206 BOPD
 8 MCFD
 10 BWPD
 41-1 GOR
 1200# FTP
 34.3 grav

Produced 10-1990 to 11-1990
 495 BO
 21 MMCF
 19,827 BW

Produced 2-1986 to 7-1986
 5393 BO
 4.9 MMCF
 13,116 BW

Smith Production Company
 Mulvey Sand

23

24

-10731

-10750

-10700

-10700

200/-9693
 COCKRELL OIL
 LAKE ARTHUR RECLAMA

HARBERT ENERGY
 LAKE ARTHUR RECLAMA

-10683

-10659

220/-10169

OWEN J P JR
 LAKE ARTHUR RECL CO

-10664

220/-10164

-10994

-10698

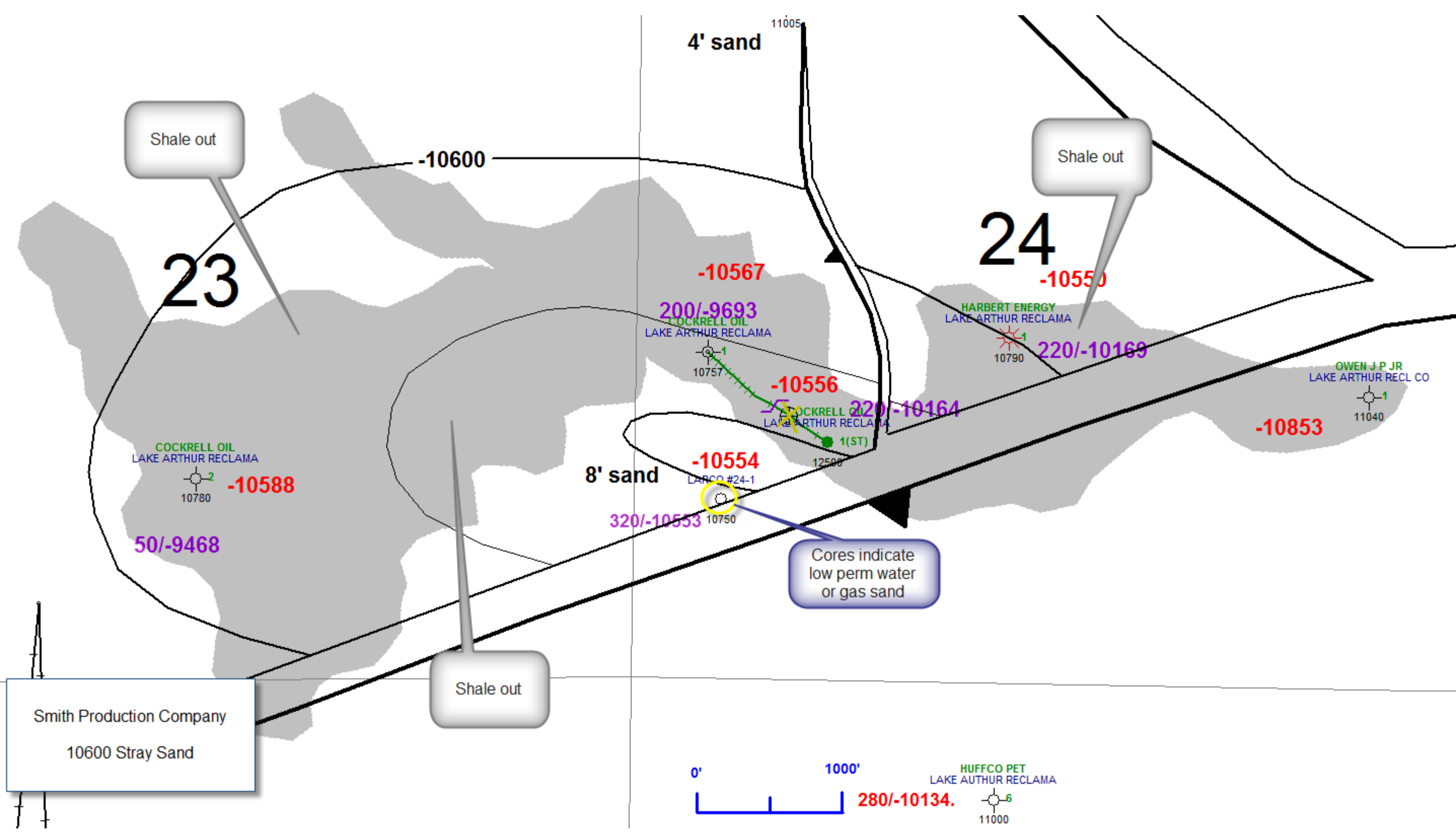
50/-9468

-10666 LARCO #24-1

320/-10553

Smith Production Company
 Mulvey Sand

ML
CULT



Smith Production Company
10600 Stray Sand

Cores indicate
low perm water
or gas sand

