

ESTIMATED RESERVES

Smith Production, Miller #1

9600' Sand

30 Acres x 3' x 1500 MCF/AF = .135 BCF

Cris A-1Aa Stray sand

30 Acres x 3' x 1500 MCF/AF = .135 BCF

Cris A-4

45 Acres x 3' x 1500 MCF/AF = .203 BCF

Cris A-5 Lower Lobes

90 Acres x 5' x 1000 MCF/AF = .95 BCF

Upper Cris A-6

63 Acres x 5' x 1200 MCF/AF = .378 BCF

Upper Cris A-7

62 Acres x 4' x 400 BO/AF = 99,200 BO

Cris A-7

52 Acres x 4' x 1500 MCF/AF = .312BCF

312 MMCF X 58 BC/MMCF = 18,096

Cris A-8

27 Acres x 4' x 400 BO/AF = 43,200 BO

Cris A-9

70 Acres x 3' x 400 BO/AF = 84,000 BO

Cris A-10

68 Acres x 7' x 350 BO/AF = 166,600 BO

Cris A-12a

61 Acres x 10' x 1000 MCF/AF =.610 BCF

610 MMCF X 12 BC/MMCF = 7320 BC

Cris A-12b

56 Acres x 10' x 1200 MCF/AF =.672 BCF

672 MMCF X 12 BC/MMCF = 8064 BC

Cris A-12e

(East 1/2) 84 Acres x 4' x 1000 MCF/AF =.336 BCF

336 MMCF X 12 BC/MMCF = 4032 BC

Cris A-13a

95 Acres x 10' x 1200 MCF/AF =1.14 BCF

1140 MMCF X 12 BC/MMCF = 13,680 BC

Cris A-16

144 Acres x 16' x 300 BO/AF = 691,200 BO

Cris A-17a

176 Acres x 25' net x 300 BO/AF = 1,320,000 BO

Cris A-17b

64 Acres x 6' x 200 BO/AF = 76,800 BO

Disc B-1d

12 Acres x 13' x 1500 MCF/AF = .234 BCF

234 MMCF X 25 BC/MMCF = 5850 BC

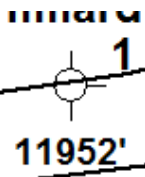
TOTAL OIL: 1,141,242 BO

TOTAL GAS: 5.105 BCF

15S - 5W

Dr. M.O. Miller

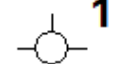
-9720



Shenandoah

12085' -9711

-9695



Forest 5



Forest 12

Watson 3



-9711

Forest 8

-9650

12932'

40/-12001

-9635

13915'

-9638

12007'

50/-1125

113 MMCF
5020 BO

Centurion

Watson 1

70/-12074

140/-12444

Watson 2



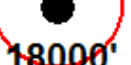
-9673

Dr. M.O. Miller

g/w -9648 (Linder #2)

-9631

Sun 1



18000'

Watson A-1

1

30/-11920

-9635

13670'

12650'

-9620

12685'

-9740

Forest 2

-9642

12858'

18,685 BO

Forest 13

-9627

Forest 1

13337'

Linder

2

25/-11997

1

30/-10562

30 Acres

200/-12592

-9669

Forest 4

12669'

9600' Sand

Forest 7

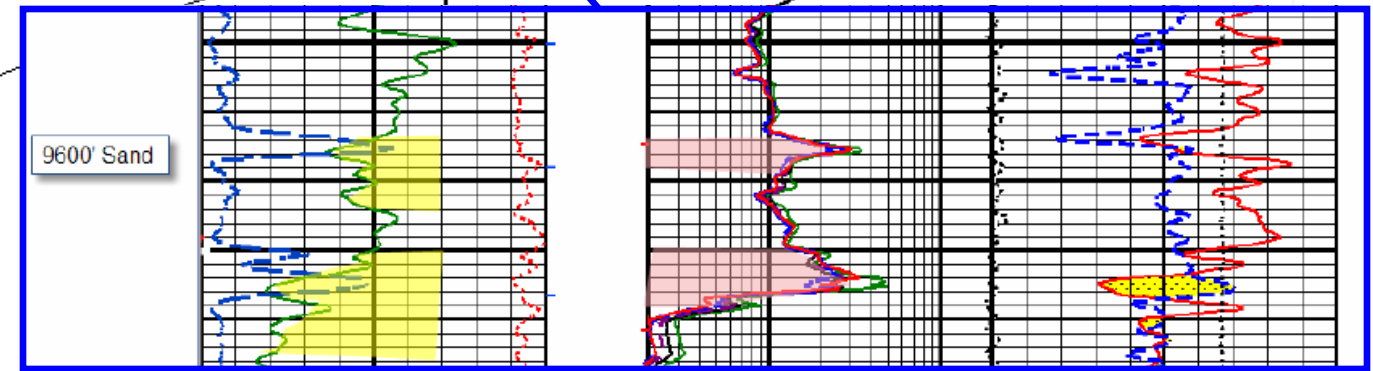
-9644

12750'

Forest 3

12668' -9661

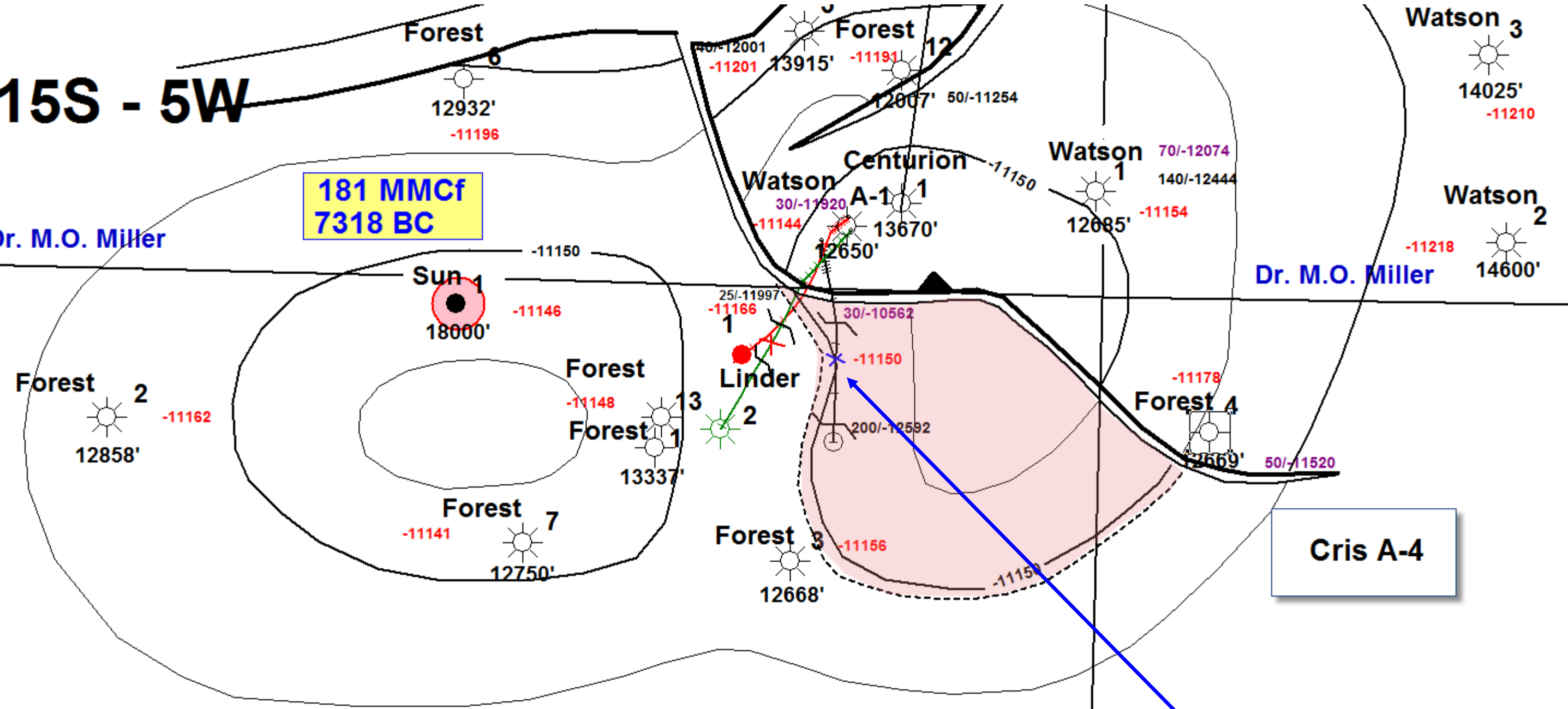
9600' Sand
30 Acres x 3' x 1500 MCF/AF = .135 BCF



15S - 5W

Dr. M.O. Miller

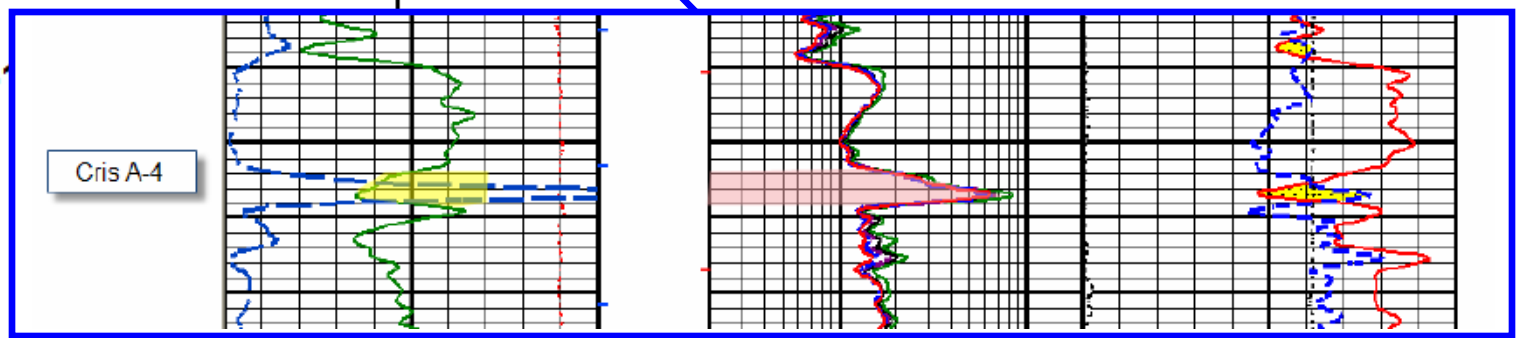
**181 MMcf
7318 BC**

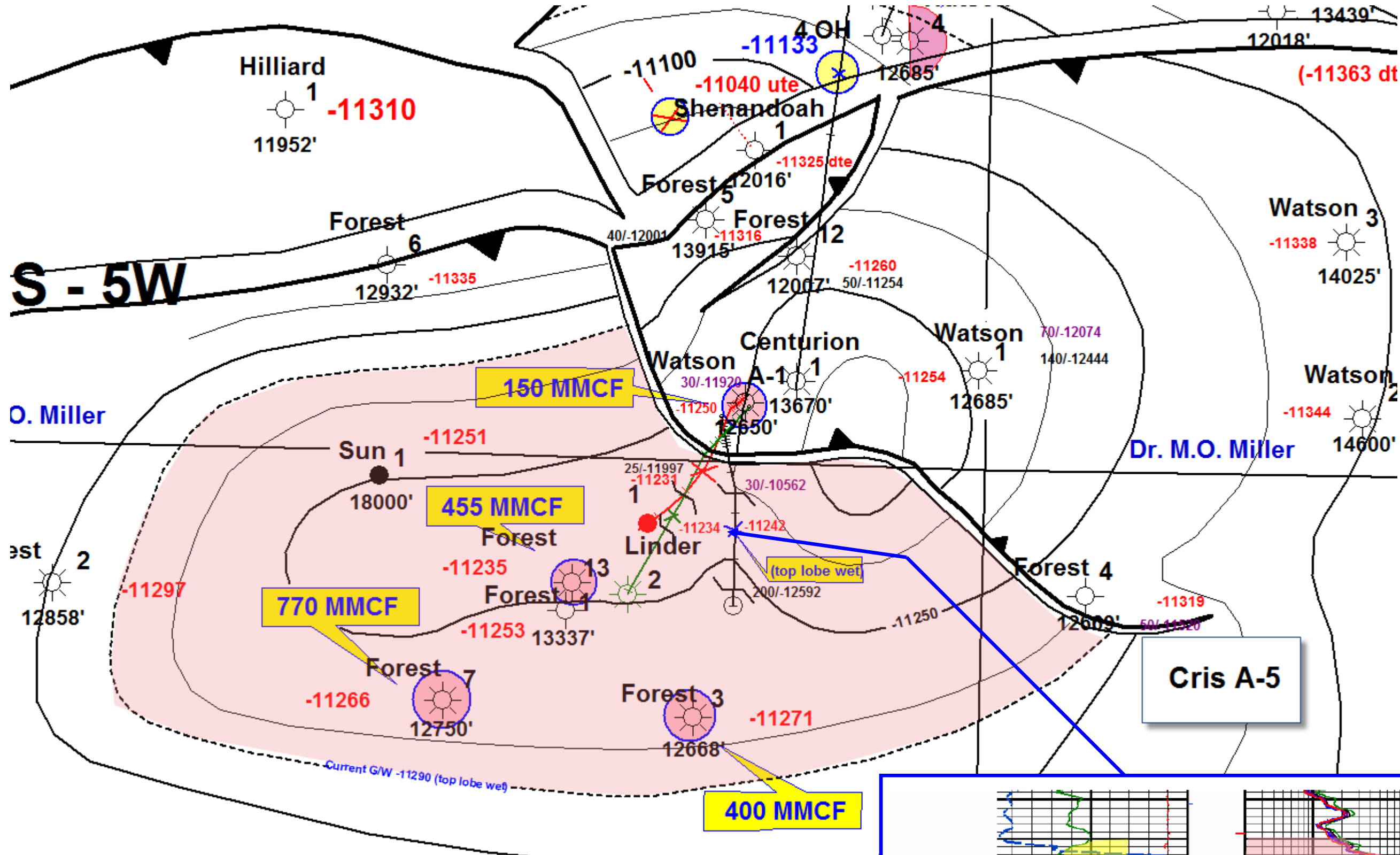


29

**Cris A-4
Lower Lobes**
45 Acres x 3' x 1500 MCF/AF = .203 BCF

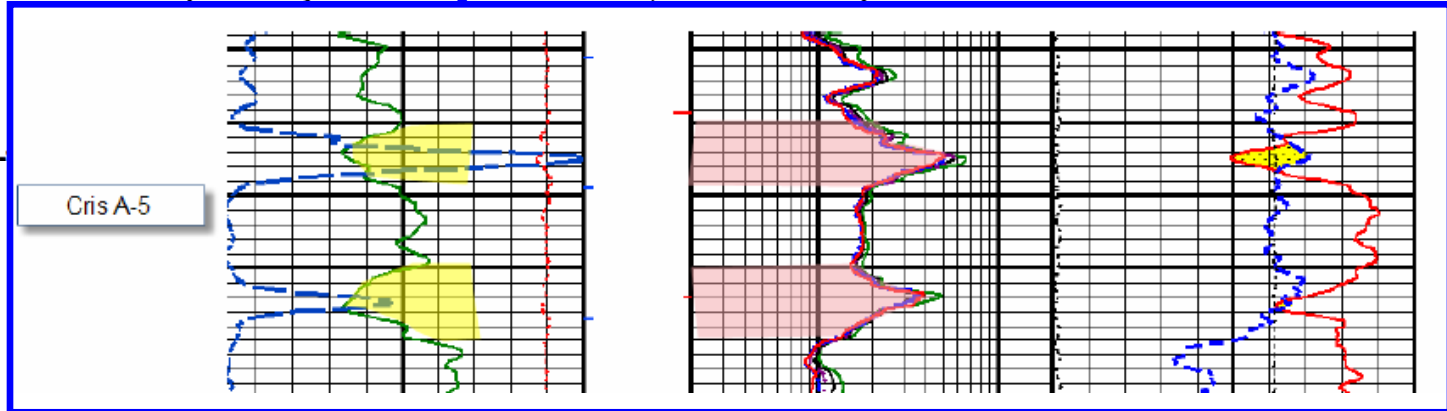
Cherryville A-
-11203

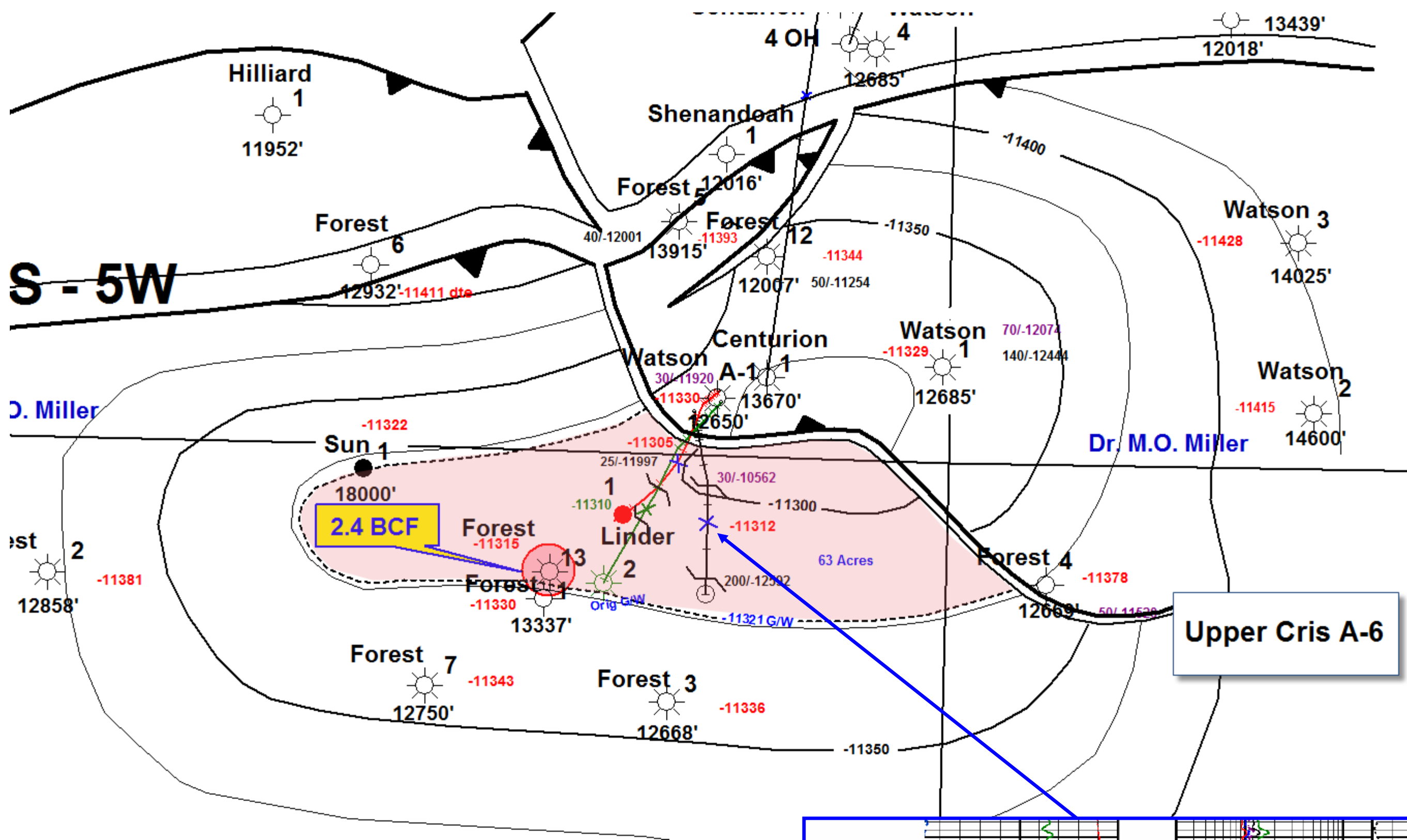




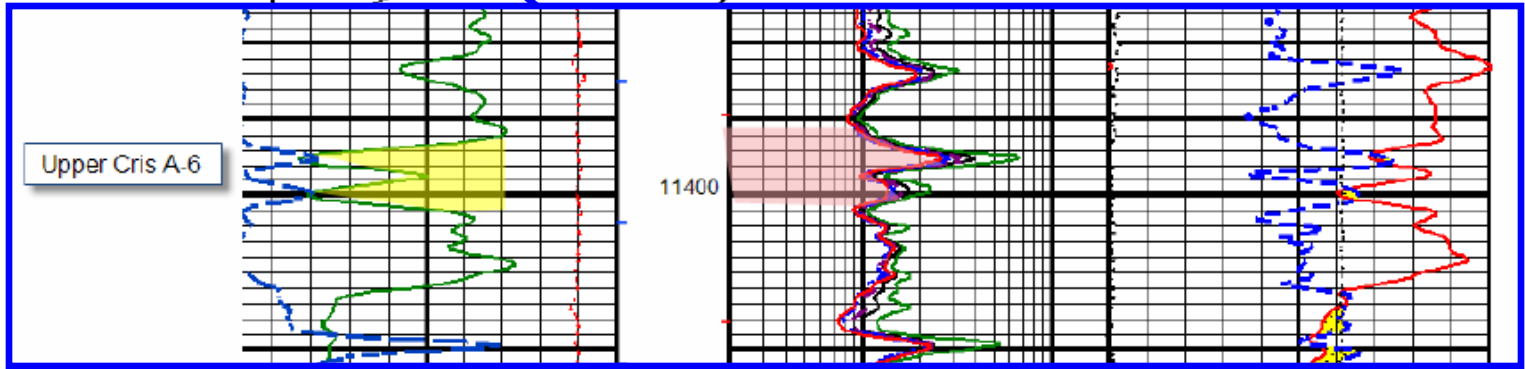
**Cris A-5
Lower Lobes**

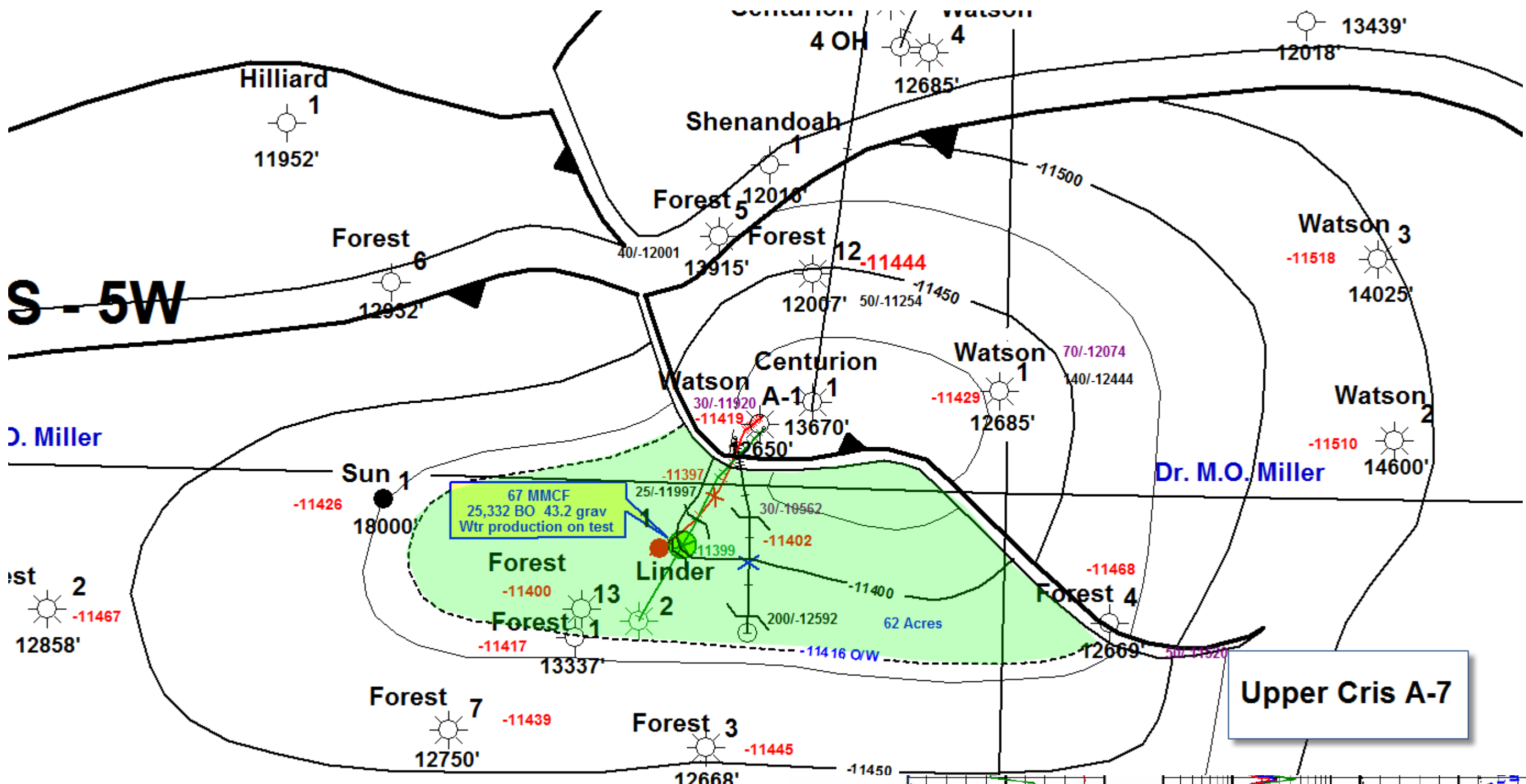
190 Acres x 5' x 1000 MCF/AF = .95 BCF



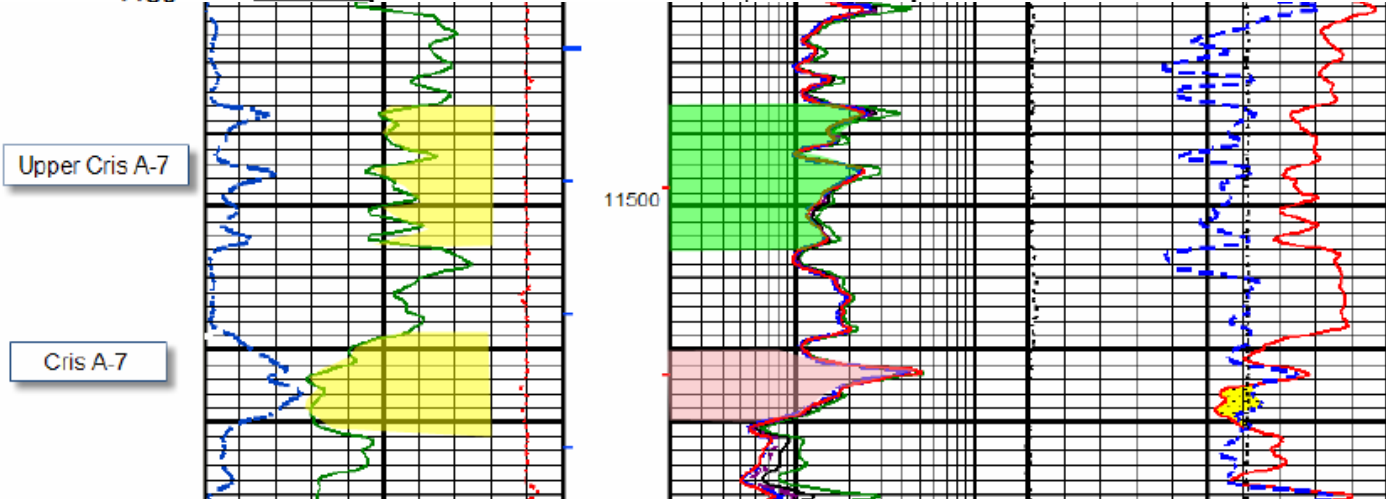


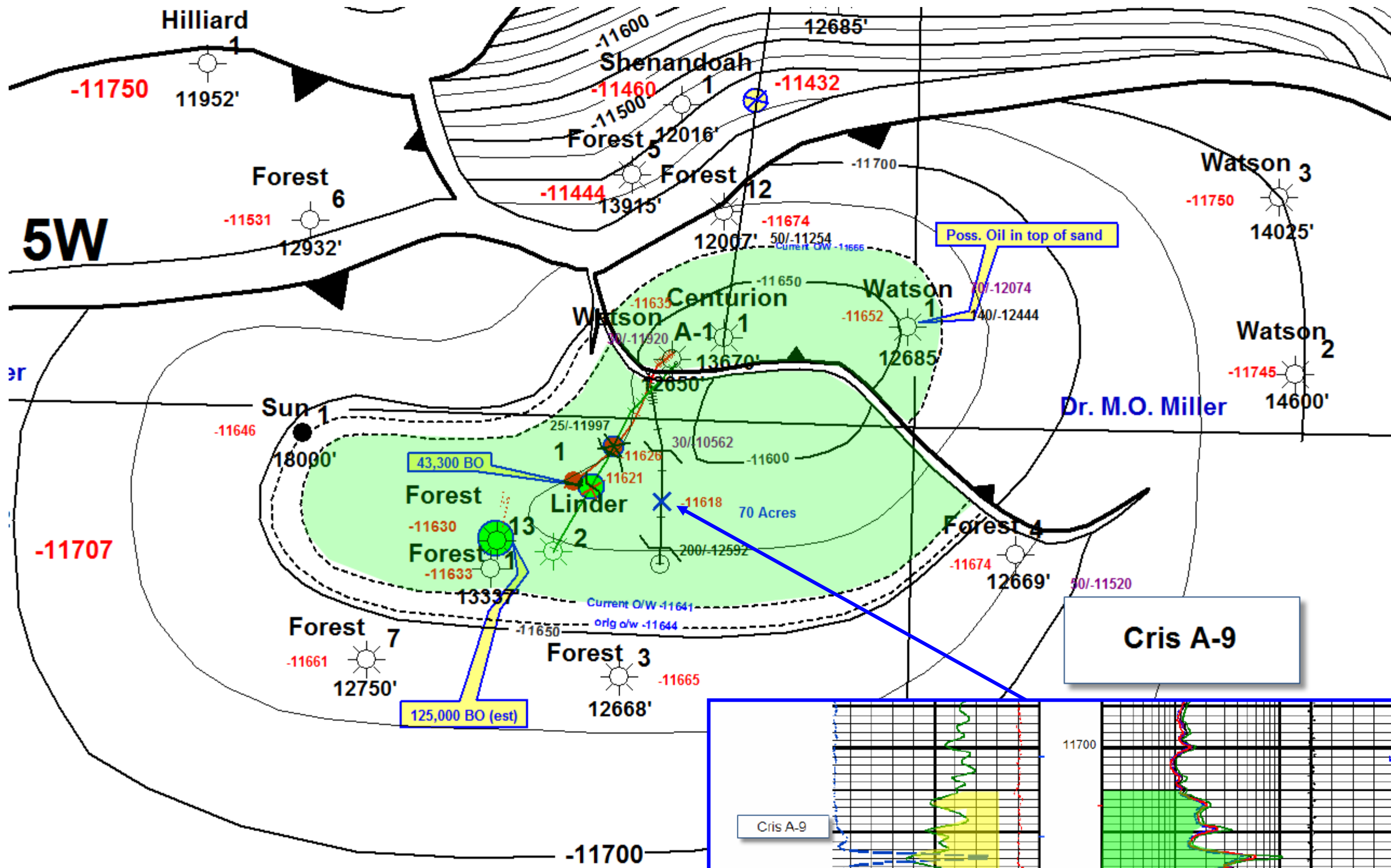
Upper Cris A-6
 63 Acres x 5' x 1200 MCF/AF = .378 BCF



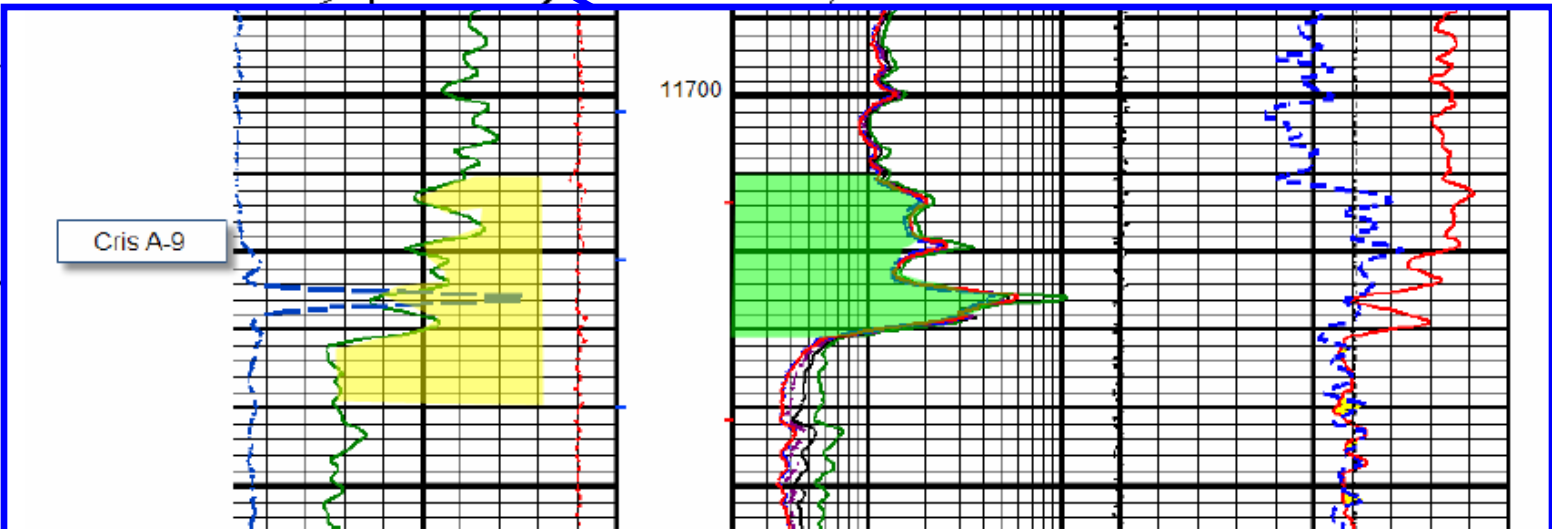


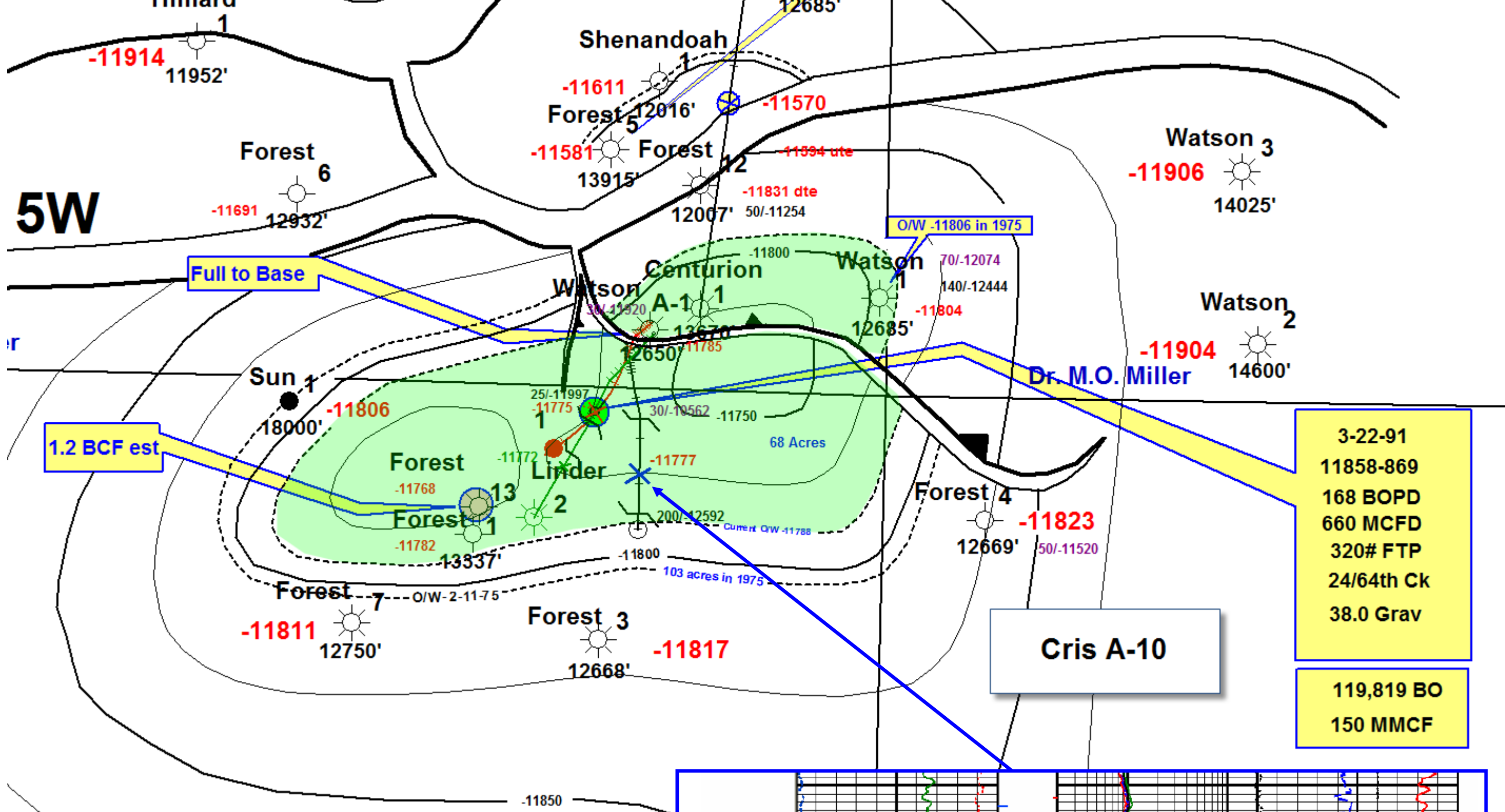
Upper Cris A-7
 62 Acres x 4' x 400 BO/AF = 99,200 BO



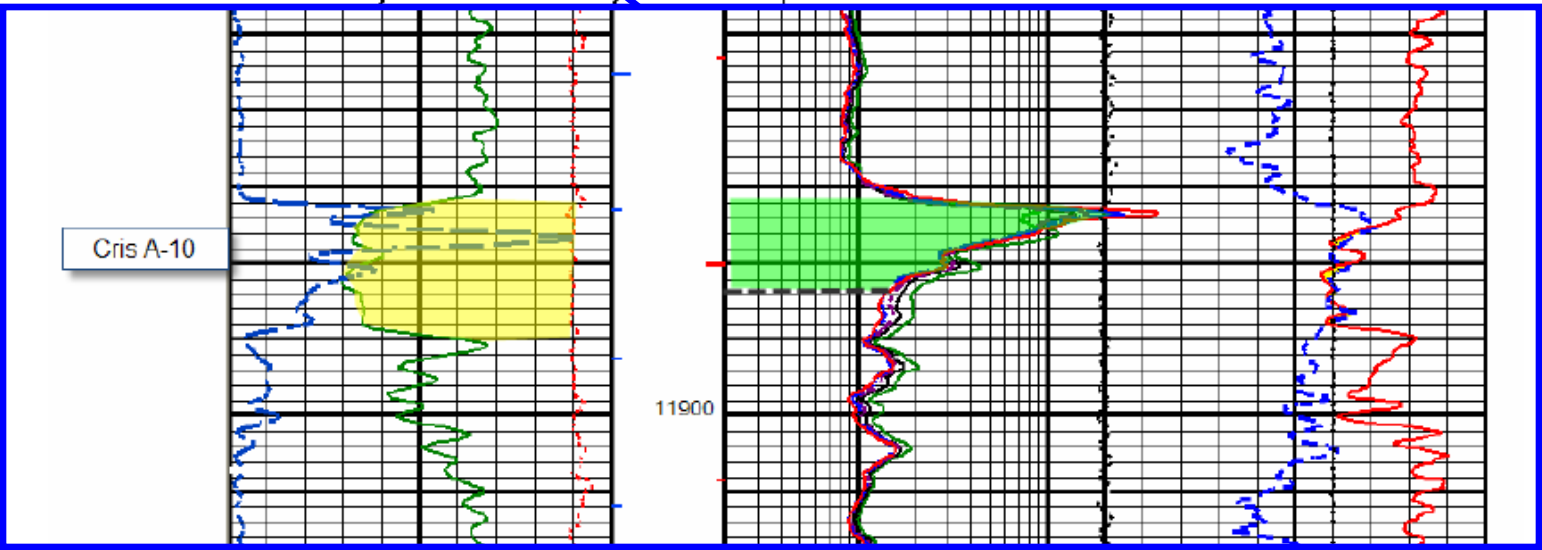


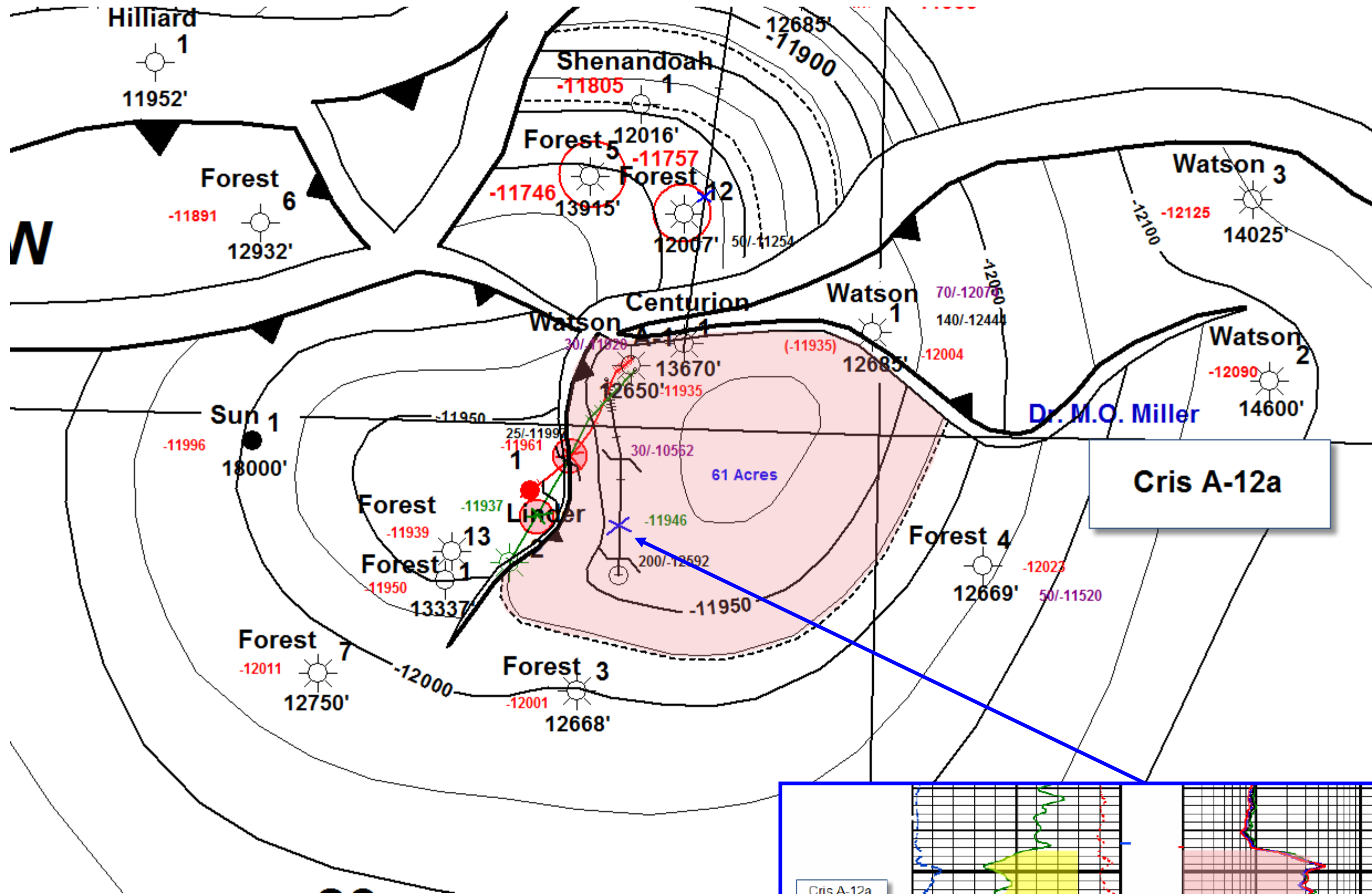
Cris A-9
 70 Acres x 3' x 400 BO/AF = 84,000 BO





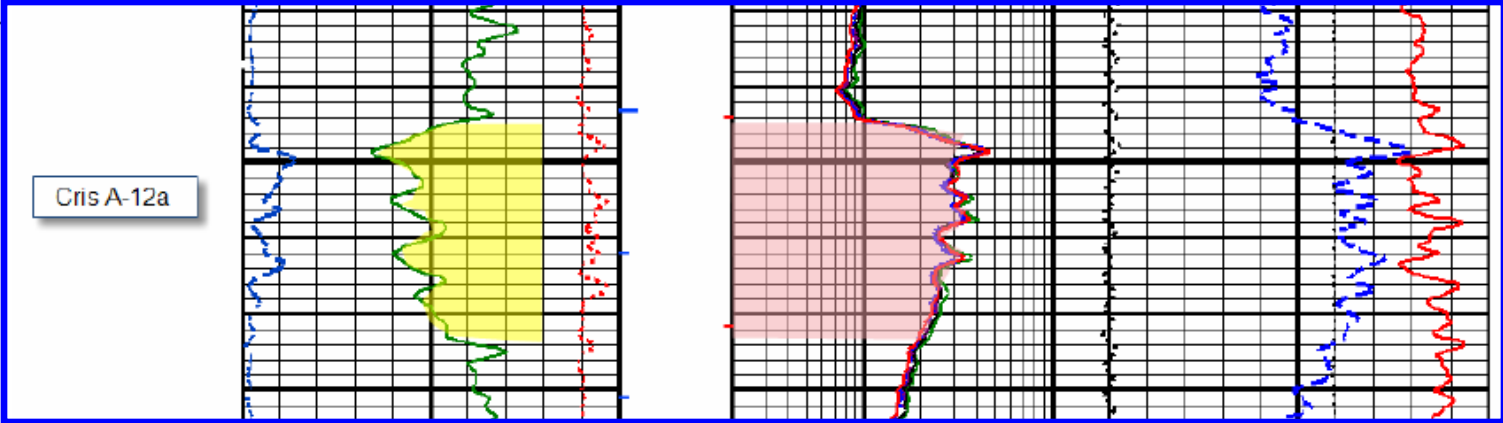
Cris A-10
 68 Acres x 7' x 350 BO/AF = 166,600 BO

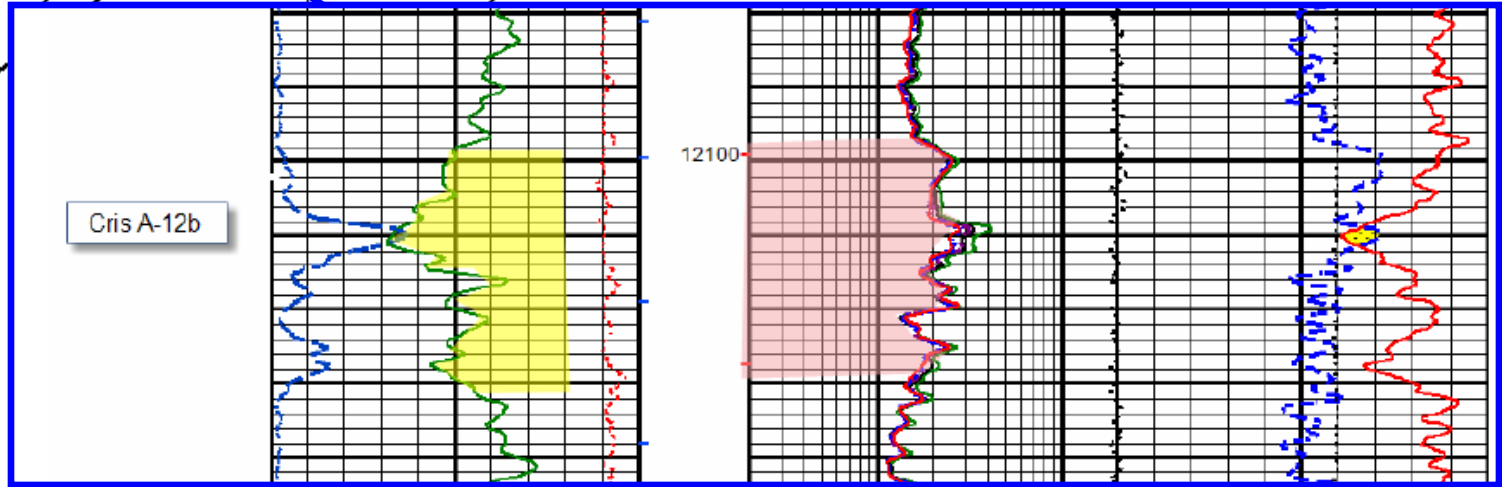
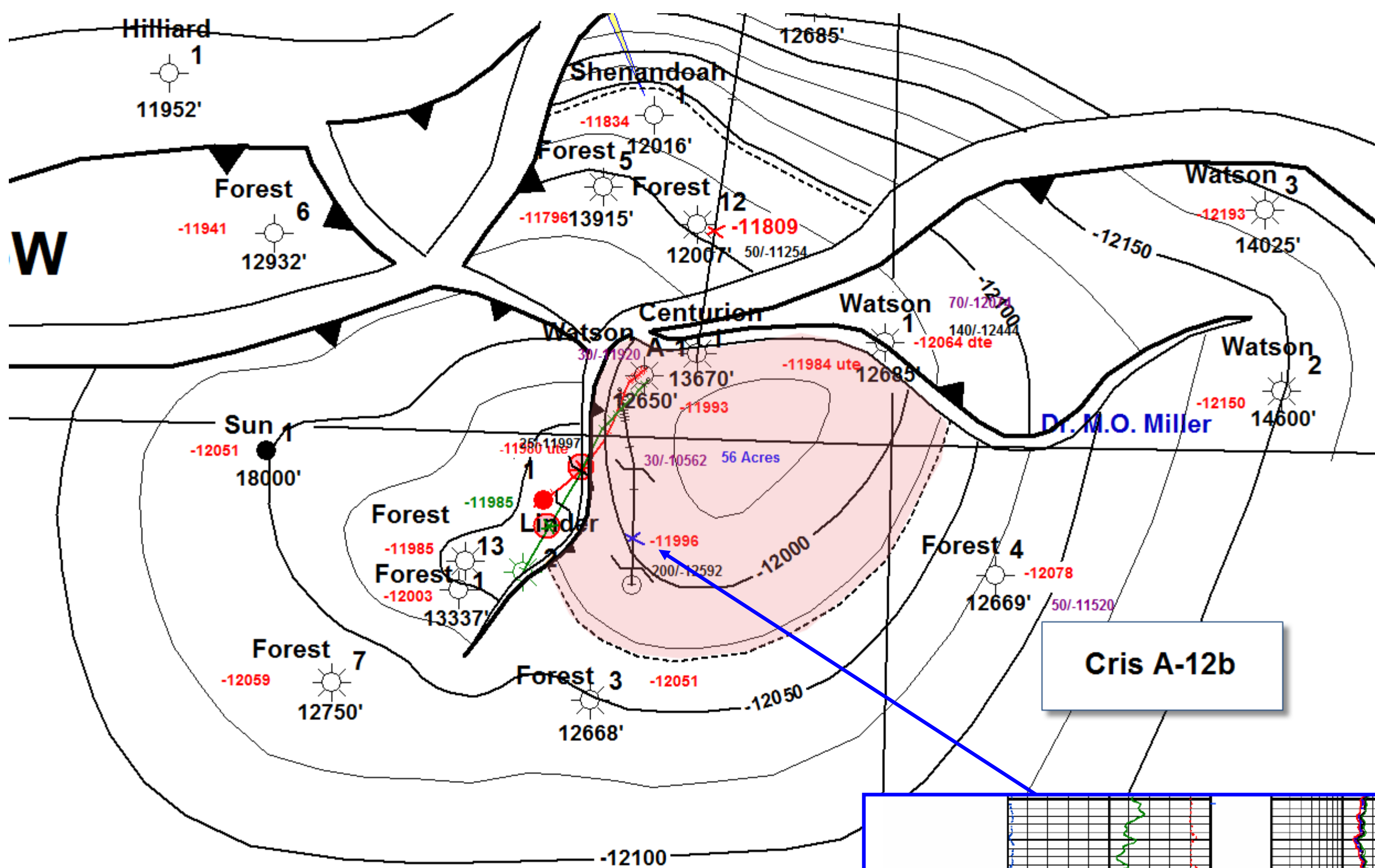




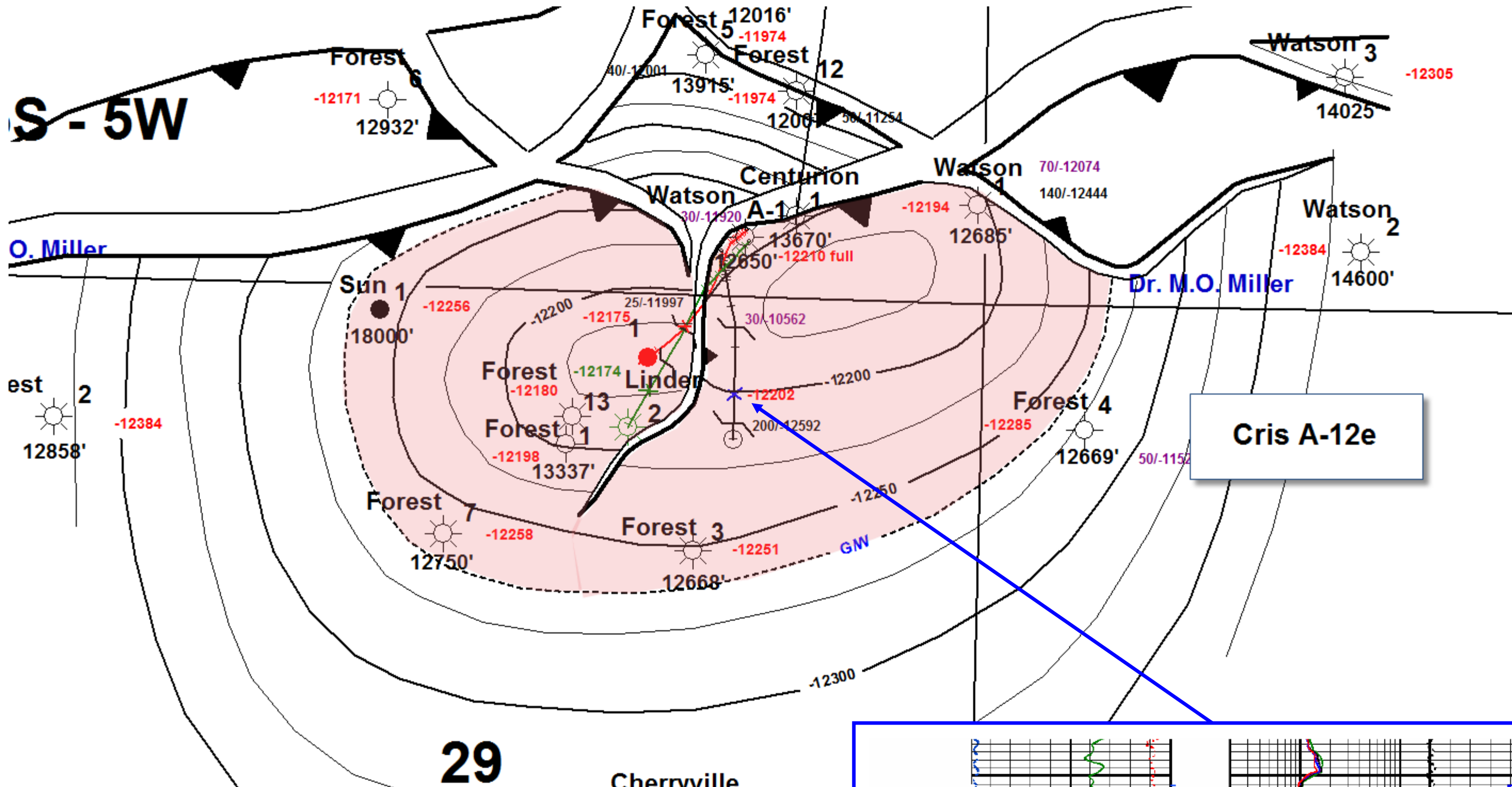
Cris A-12a

Cris A-12a
 61 Acres x 10' x 1000 MCF/AF = .610 BCF
 610 MMCF X 12 BC/MMCF = 7320 BC



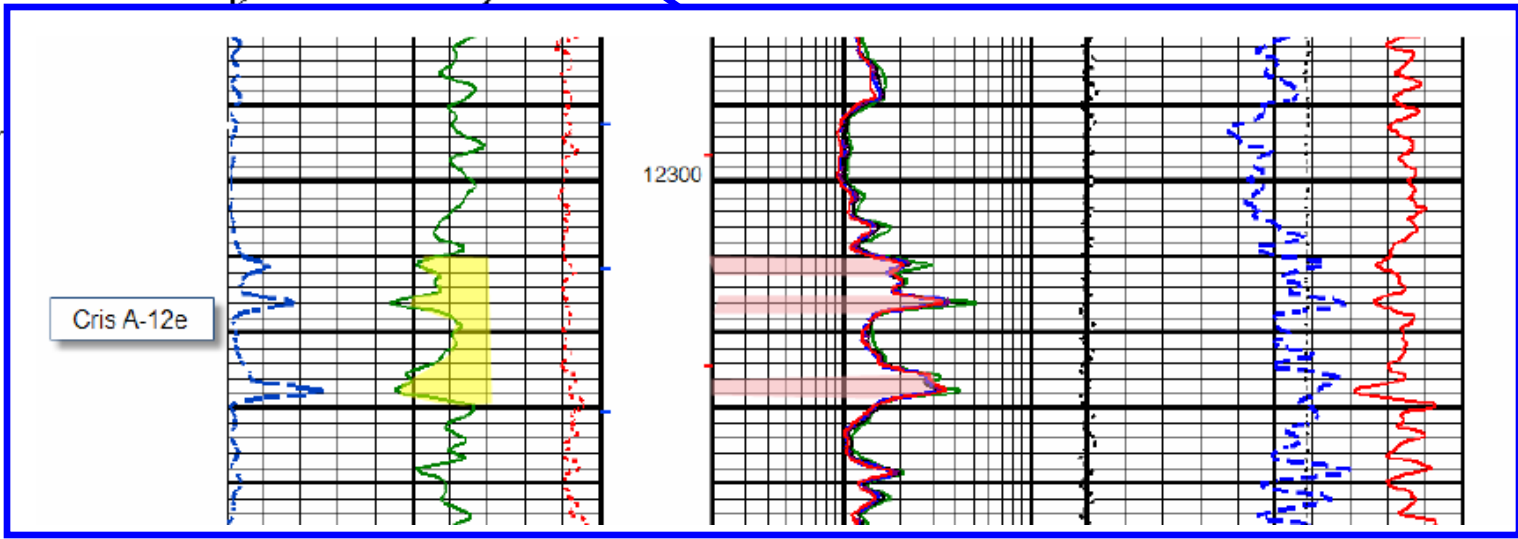


Cris A-12b
 56 Acres x 10' x 1200 MCF/AF = .672 BCF
 672 MMCF X 12 BC/MMCF = 8064 BC

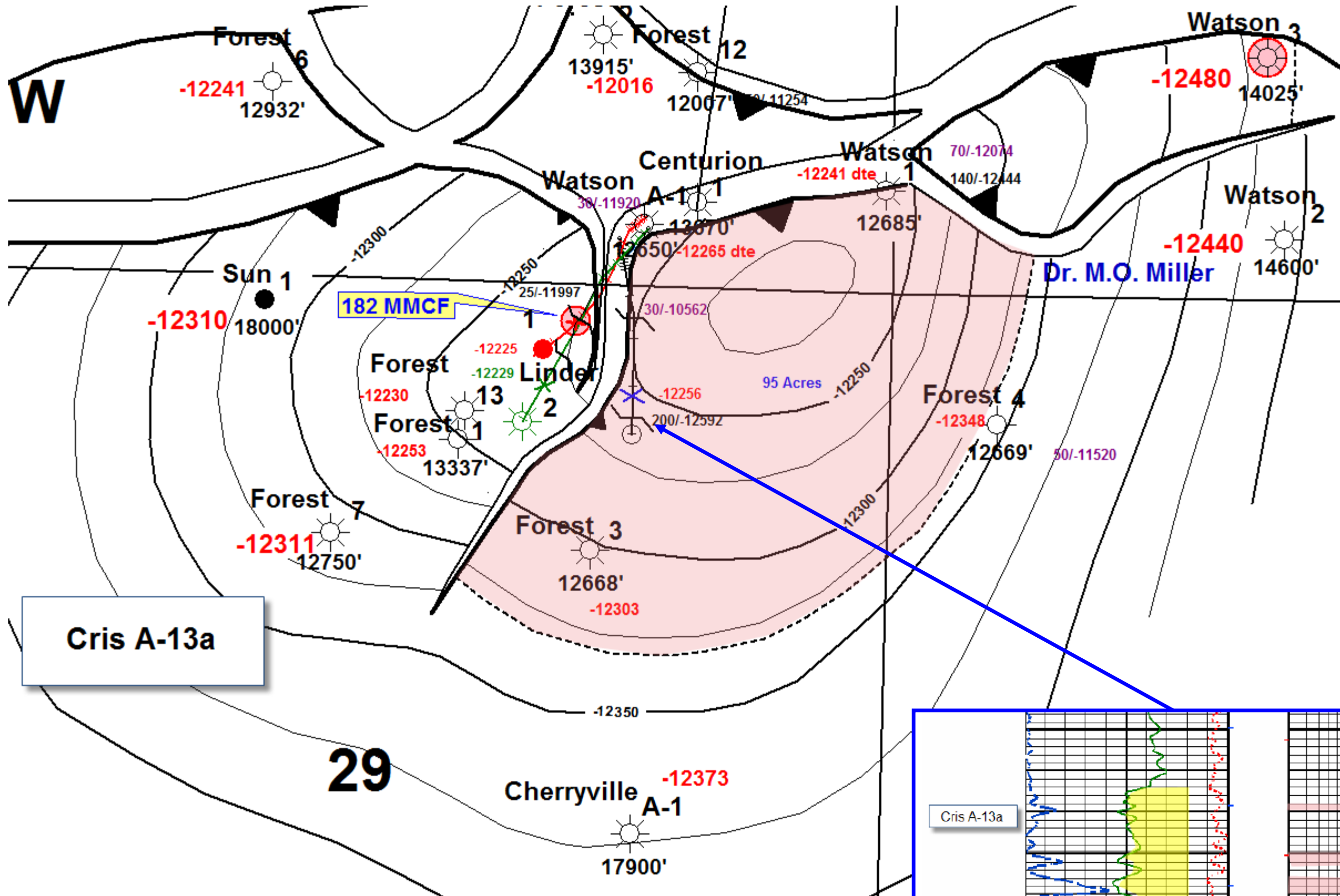


Cris A-12e

Cris A-12e
 (East 1/2) 84 Acres x 4' x 1000 MCF/AF = .336 BCF
 336 MMCF X 12 BC/MMCF = 4032 BC

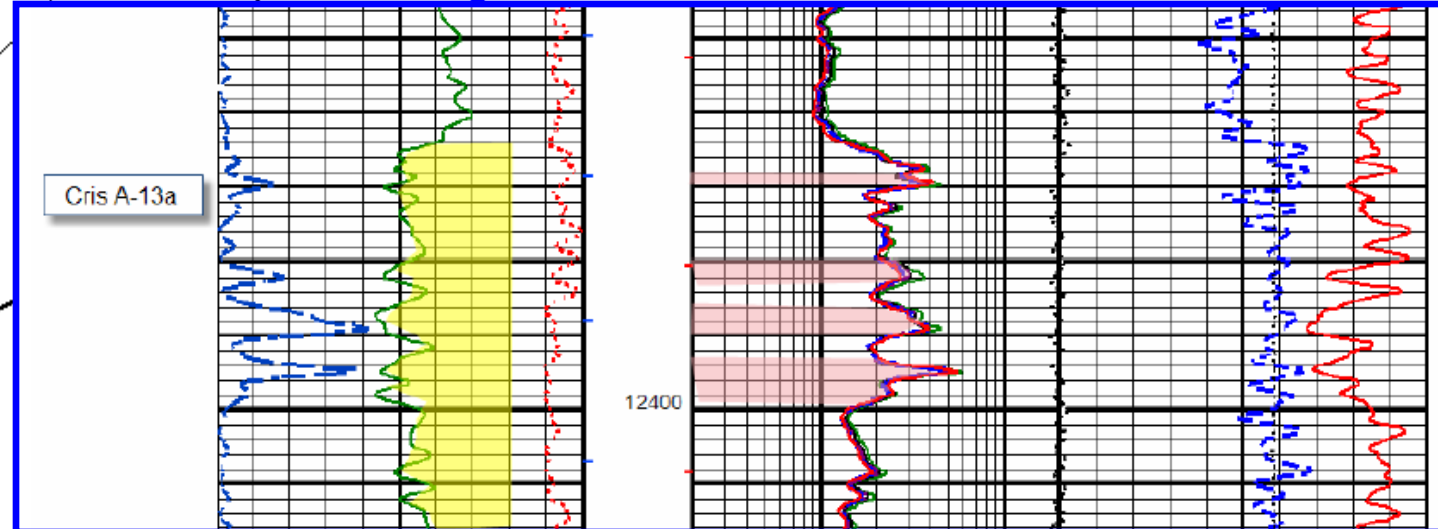


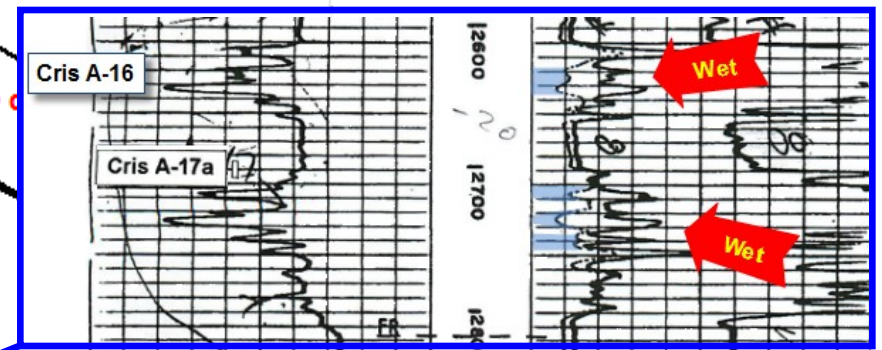
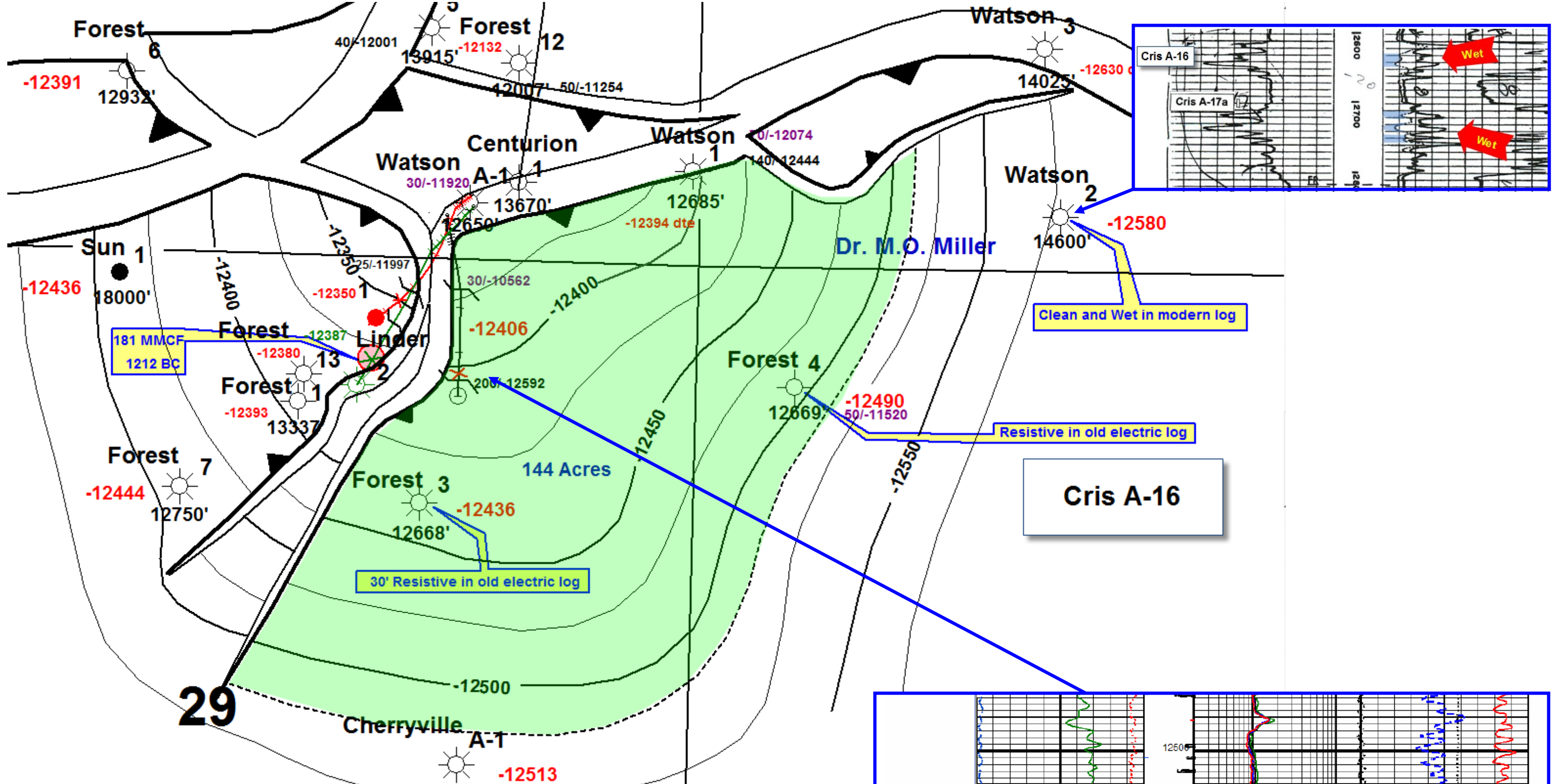
Cris A-12e



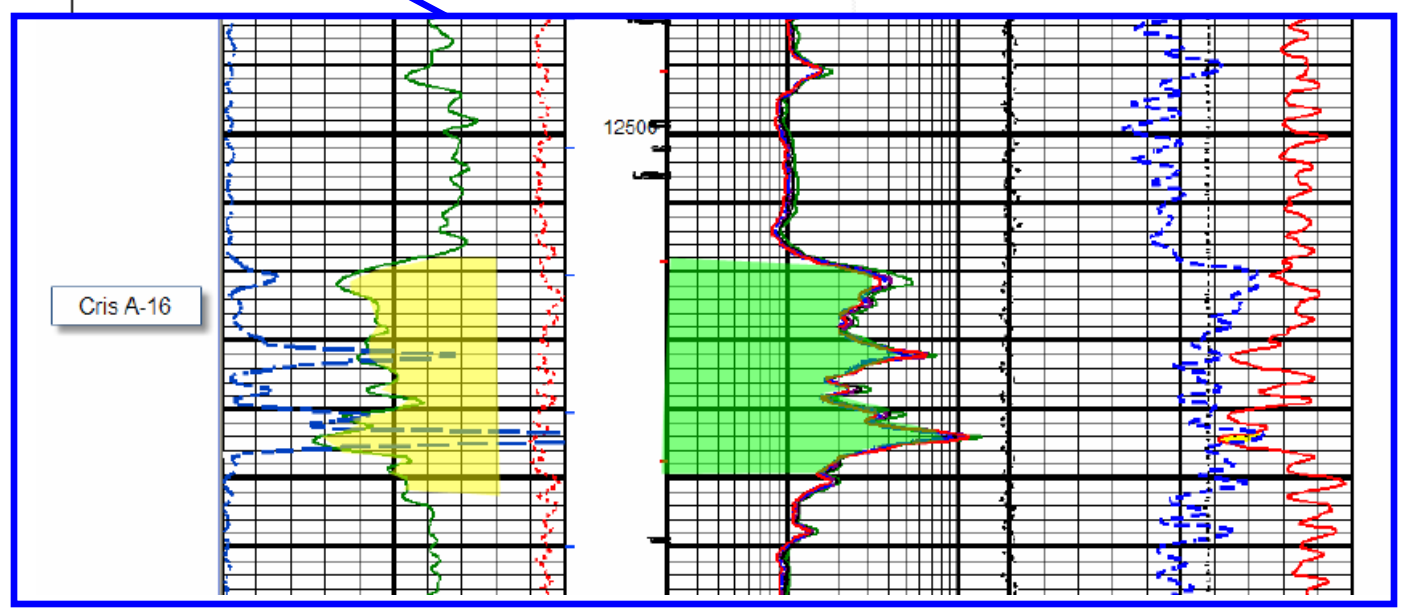
Cris A-13a

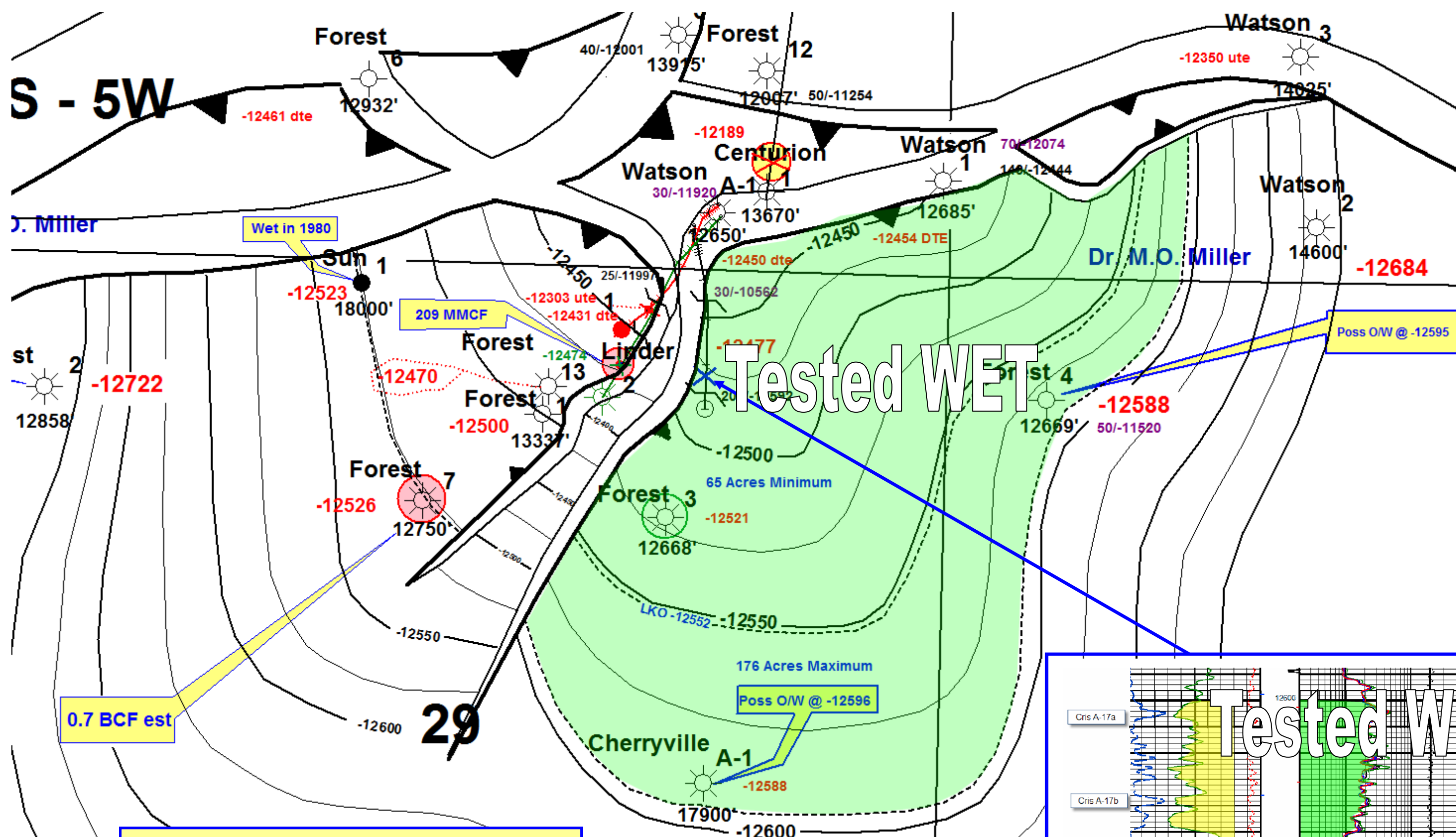
Cris A-13a
 95 Acres x 10' x 1200 MCF/AF = 1.14 BCF
 1140 MMCF X 12 BC/MMCF = 13,680 BC



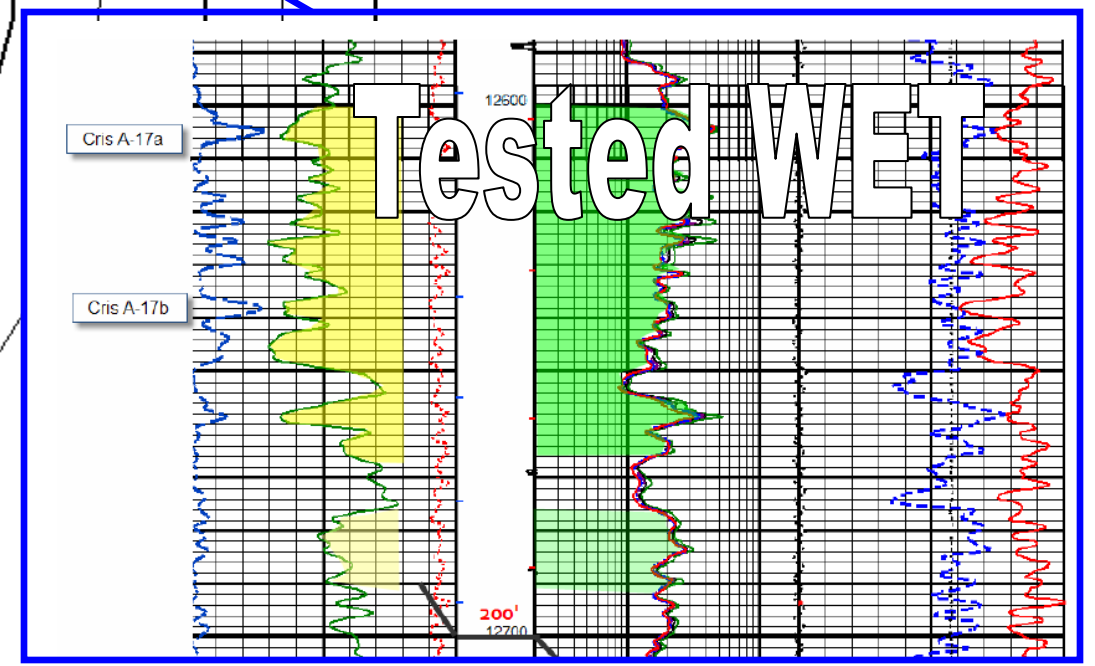


Cris A-16
 144 Acres x 16' x 300 BO/AF = 691,200 BO

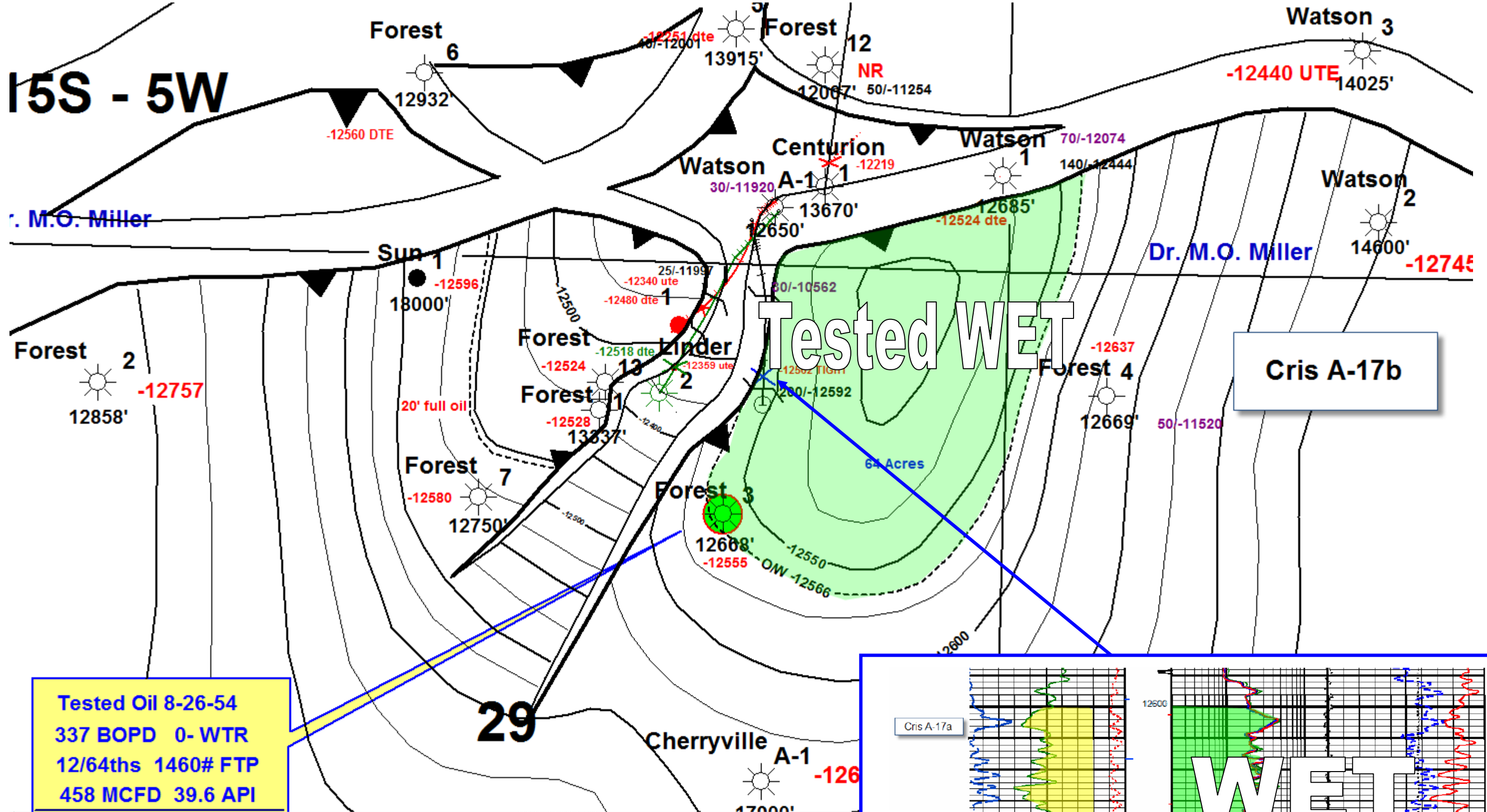




Cris A-17a
NO RESERVES

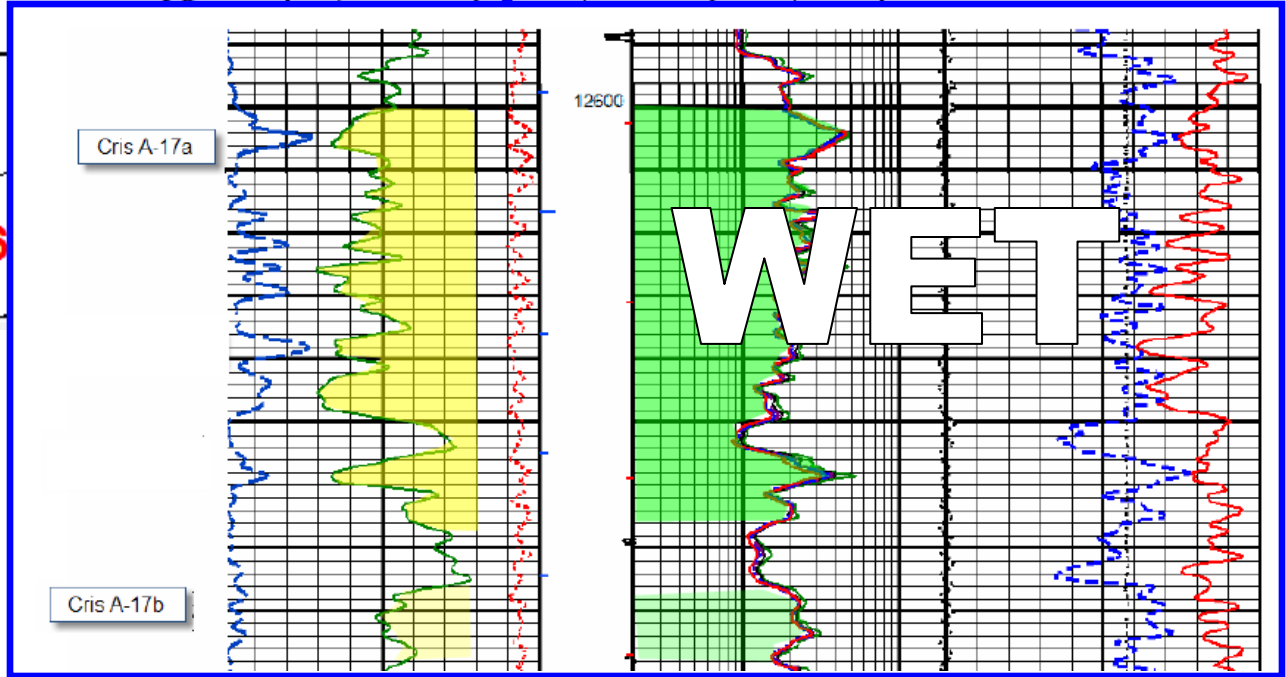


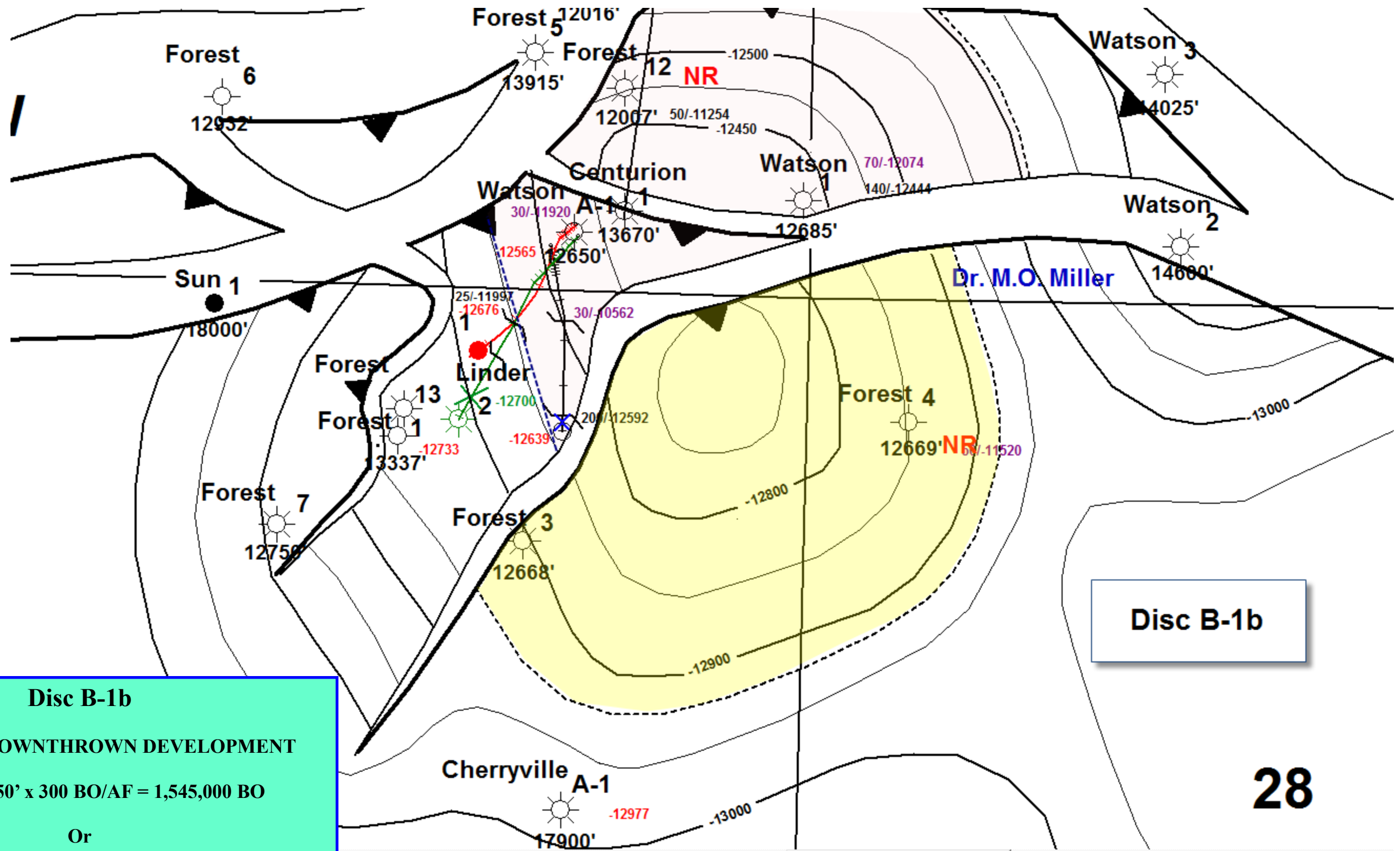
15S - 5W



Tested Oil 8-26-54
 337 BOPD 0- WTR
 12/64ths 1460# FTP
 458 MCFD 39.6 API

Cris A-17b
 NO RESERVES





Disc B-1b

Disc B-1b

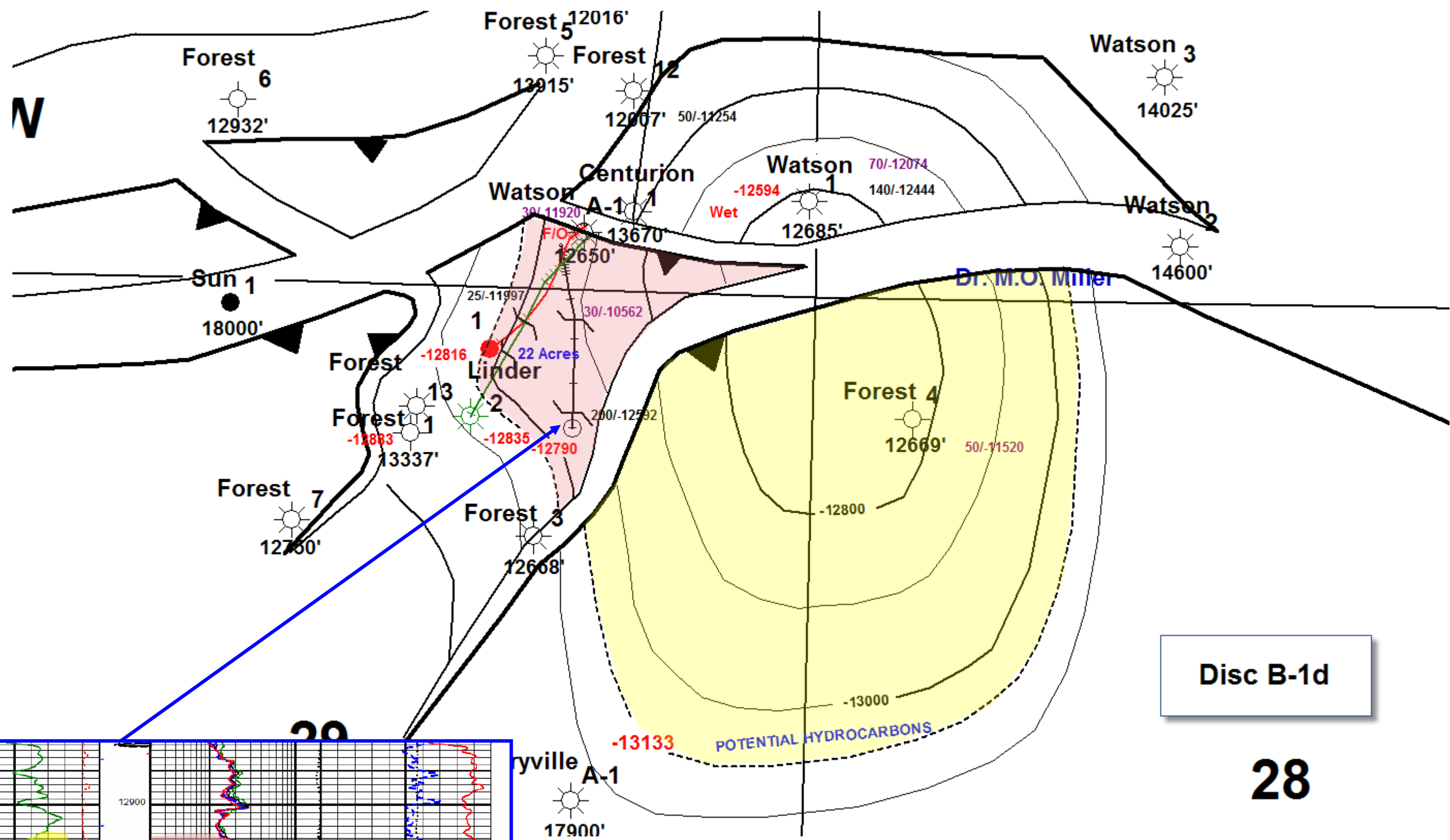
POTENTIAL DOWNTHROWN DEVELOPMENT

103 Acres x 50' x 300 BO/AF = 1,545,000 BO

Or

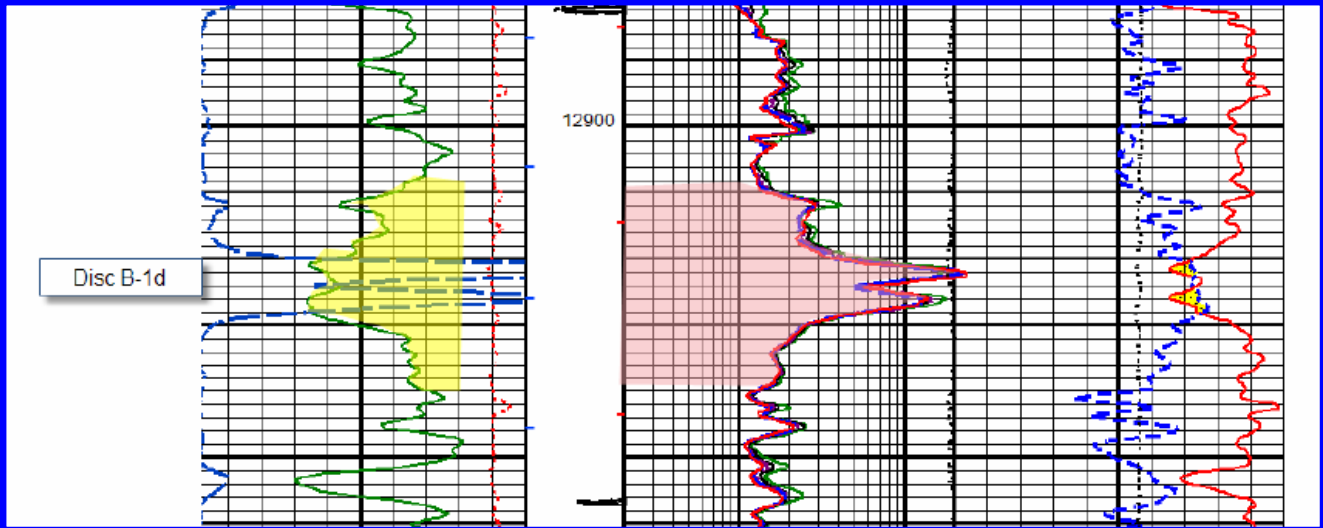
103 Acres x 50' x 1500 MCF/AF = 7.725 BCF

7725 x 12 BC/MMCF = 92,700 BC



Disc B-1d

28



Disc B-1d
 12 Acres x 13' x 1500 MCF/AF = 234 MMCF
 234 MMCF X 25 BC/MMCF = 5850 BC

Smith
Miller #1
6-2-11

Forest
Miller #4
9-7-54

Watson
Miller #2
6-12-75

