

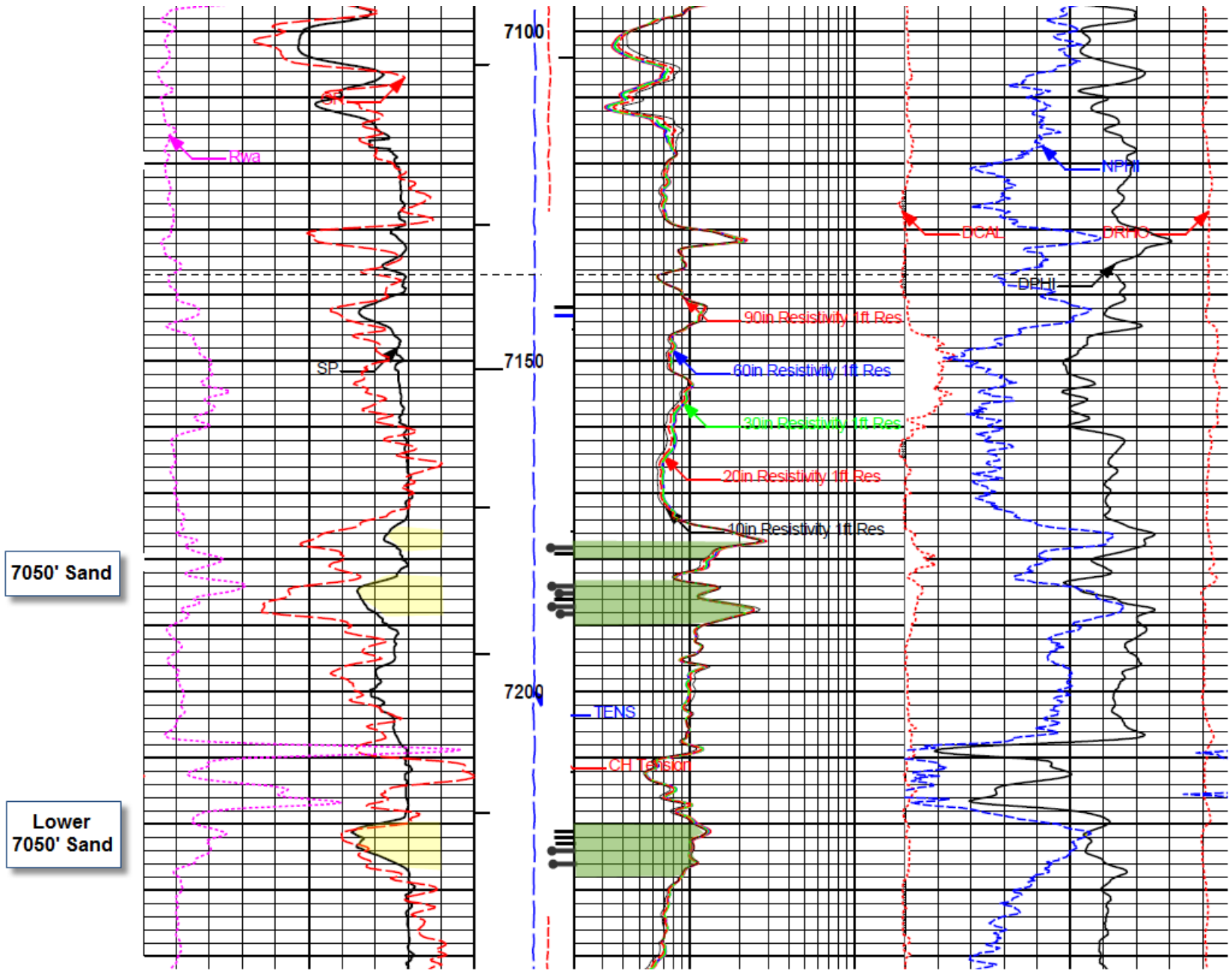
Mermentau Field (Fiddle Prospect)
 Cameron Parish, Louisiana
 Section 013, T14S-R06W
 API No.: 17023230860000

Weatherford[®]
 LABORATORIES

TECH: A. Broussard
 DATE: October 11, 2011
 CORES: Halliburton

PERCUSSION SIDEWALL CORE ANALYSIS

In. Rec.	Sample Depth Feet	Permeability mD	Porosity %	Pore Volume Saturation		Prob Prod	Bulk Volume Saturation		Comb. Gas	Crit. Water %	QA Factor	Core Lithology
				Oil %	Water %		Oil %	Gas %				
6900' Sand	2.0 7058.0	12.0	19.1	10.0	77.8	Oil	1.9	2.3	40	64	2m	Sd vf-fg slty shy foss ft yl-wh flu
	1.5 7060.0	350.0	27.6	13.9	68.0	Oil	3.8	5.0	77	41	2m	Sd vfg slty sshy scalc yl-wh flu 41° API
	2.0 7062.0	505.0	28.3	9.9	66.5	Oil	2.8	6.7	60	39	2m	Sd vfg slty sshy lam scalc stks yl-wh flu
	1.5 7064.0	485.0	27.7	10.0	65.1	Oil	2.8	6.9	100+	39	2m	Sd vfg slty sshy scalc yl-wh flu
	0.0 7066.0											Misfire
	0.0 7068.0											Empty Barrel
Lower 6900' Sand	1.5 7083.0	750.0	28.0	11.1	64.9	Oil	3.1	6.7	52	35	3m	Sd vfg slty sshy yl-wh flu 36° API
	1.0 7085.0	510.0	27.0	0.4	77.1	Wtr	0.1	6.1	22	38	3fm	Sd vfg slty sshy ft yl-wh flu
	1.0 7094.0	365.0	26.9	0.4	79.5	Wtr	0.1	5.4	13	41	2m	Sd vfg slty sshy vft flu
	2.0 7095.0	6.9	18.2	0.0	88.2	(6)	0.0	2.1	11	66	2m	Sd vfg slty vshy lam sfoss no flu
	2.0 7096.0	0.9	15.5	0.0	90.9	(6)	0.0	1.4	10	69	1	Sd vfg slty vshy vcalc no flu



In. Rec.	Sample Depth Feet	Permeability mD	Porosity %	Pore Volume Saturation		Prob Prod	Bulk Volume Saturation		Comb. Gas	Crut. Water %	QA Factor	Core Lithology
				Oil %	Water %		Oil %	Gas %				
1.0	7142.0	8.8	19.2	0.7	82.5	(6)	0.1	3.2	32	66	2m	Sd vfg slty vshy lam vft flu
1.5	7143.0	66.0	22.3	0.5	83.3	Wtr	0.1	3.6	35	52	2m	Sd vfg vsly shy lam stks ft yl flu
1.0	7178.0	23.0	20.8	7.2	77.8	Oil	1.5	3.1	100+	61	3fm	Sd vfg slty shy vcalc mott ft yl flu
1.5	7179.0	7.5	18.2	2.1	86.4	(6)	0.4	2.1	20	65	1	Sd vfg slty vshy scalc mott ft yl flu
2.0	7184.0	800.0	28.4	11.2	59.4	Oil	3.2	8.3	100+	35	2m	Sd vf-fg ssly sshy yl-wh flu 41° API
2.0	7185.0	105.0	25.1	7.1	70.5	Oil	1.8	5.6	58	51	2m	Sd vf-fg slty shy mott yl-wh flu
1.5	7186.0	8.1	18.3	2.5	83.6	(6)	0.5	2.6	15	65	2m	Sd vf-fg slty vshy mott ft yl-wh flu
1.0	7187.0	31.0	21.3	7.6	71.4	Oil	1.6	4.5	45	59	2m	Sd vf-fg slty shy mott yl-wh flu
1.0	7188.0	65.0	23.4	7.4	69.4	Oil	1.7	5.4	70	53	2m	Sd vf-fg slty shy mott vcalc yl-wh flu
0.0	7197.0											Pull Off
2.0	7215.0								43			Shale blk no flu
2.0	7218.0								2			Mudcake w/ trace sand
2.0	7221.0	4.5	16.0	0.0	82.8	(6)	0.0	2.8	10	63	4m	Sd vfg slty vshy vcalc no flu
2.0	7222.0	0.7	14.5	0.0	84.4	(6)	0.0	2.3	7	67	2m	Sd vfg slty vshy lam scalc no flu
0.0	7223.0											Empty Barrel
1.5	7224.0	560.0	27.1	3.4	80.9	Cond	0.9	4.3	13	36	3fm	Sd vfg slty sshy vft flu
0.0	7225.0											Empty Barrel
2.0	7226.0	15.0	20.8	8.2	74.1	Oil	1.7	3.7	65	65	2m	Sd vfg slty shy lam stks yl-wh flu 43° API