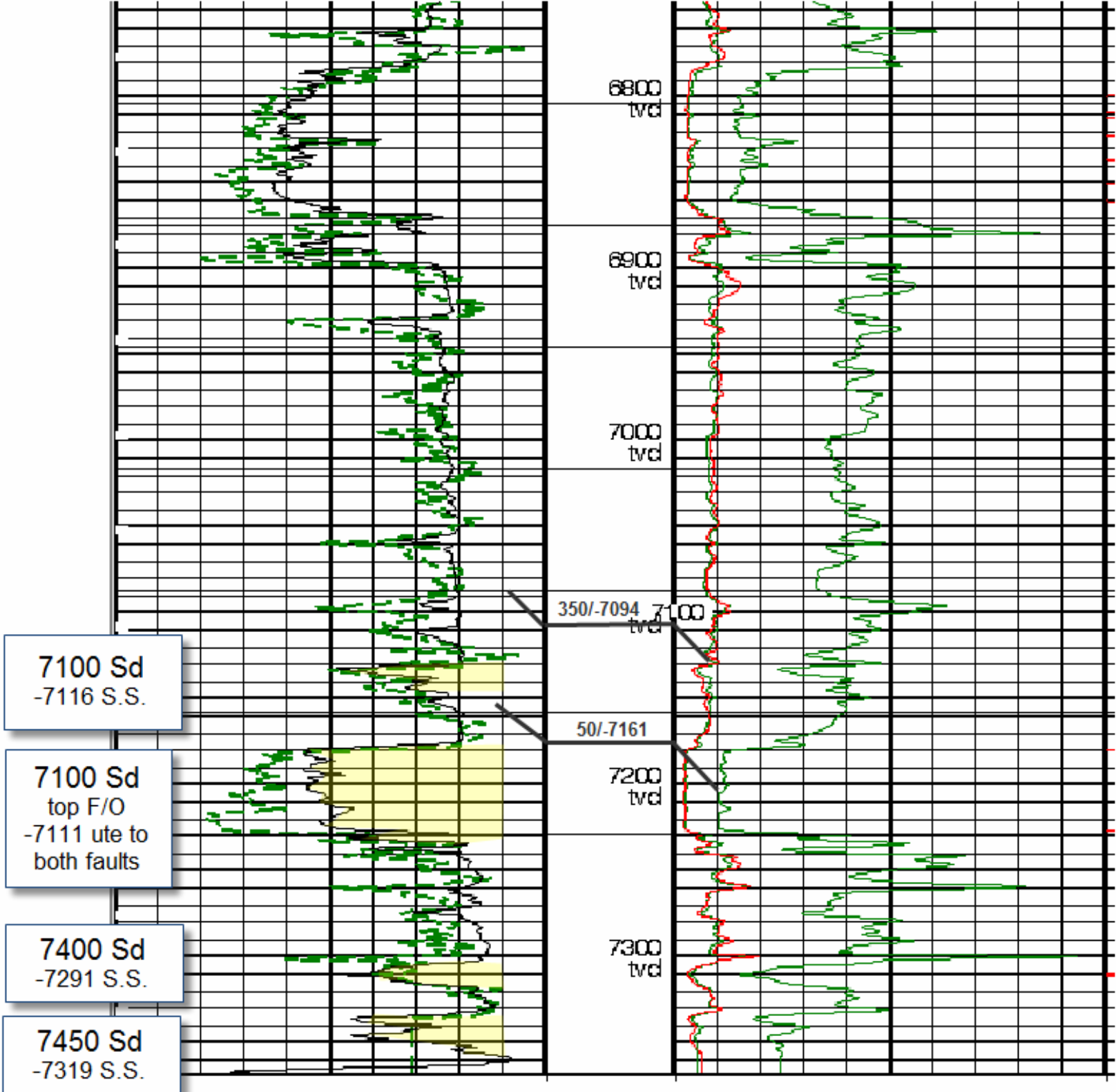
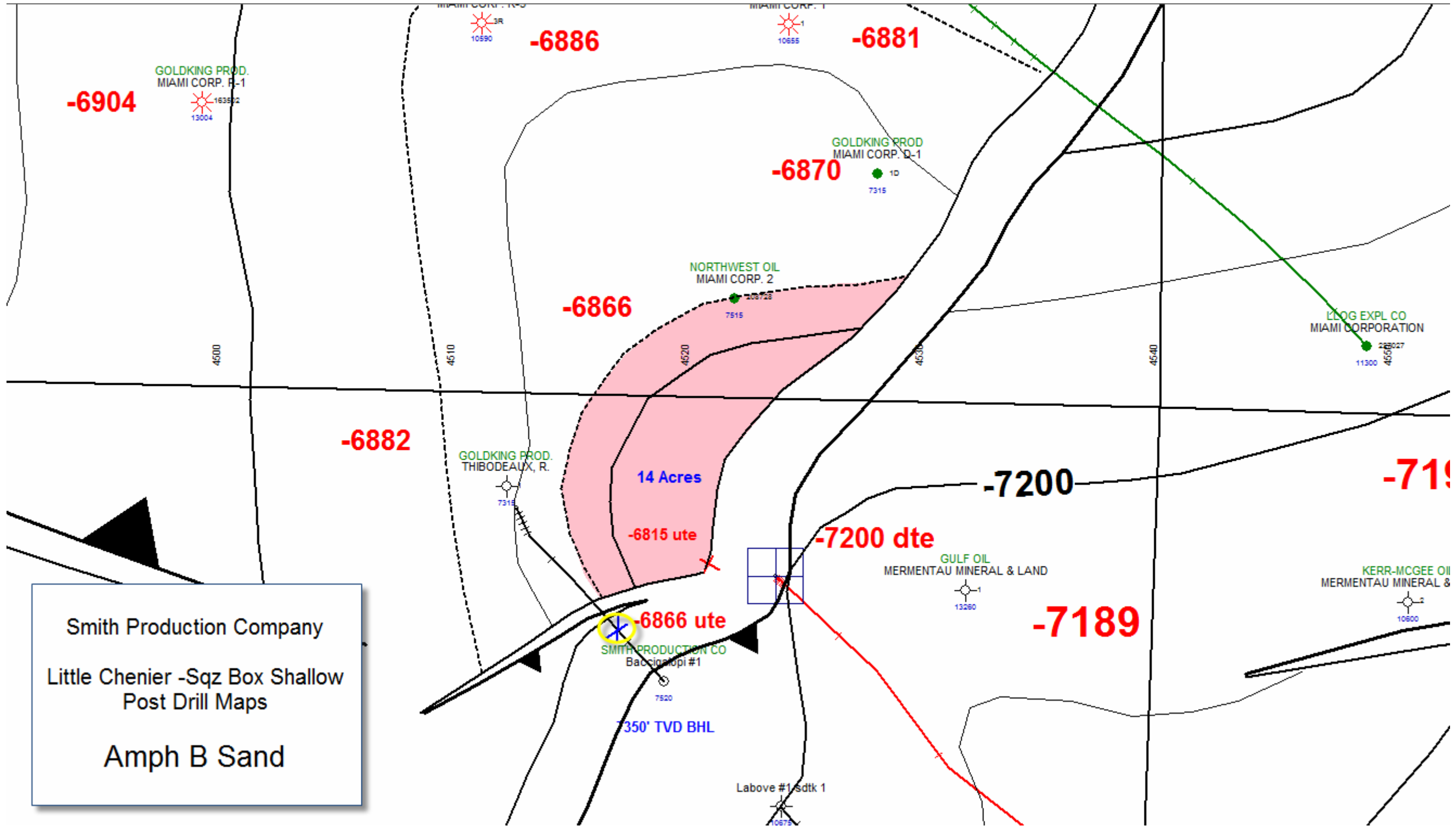
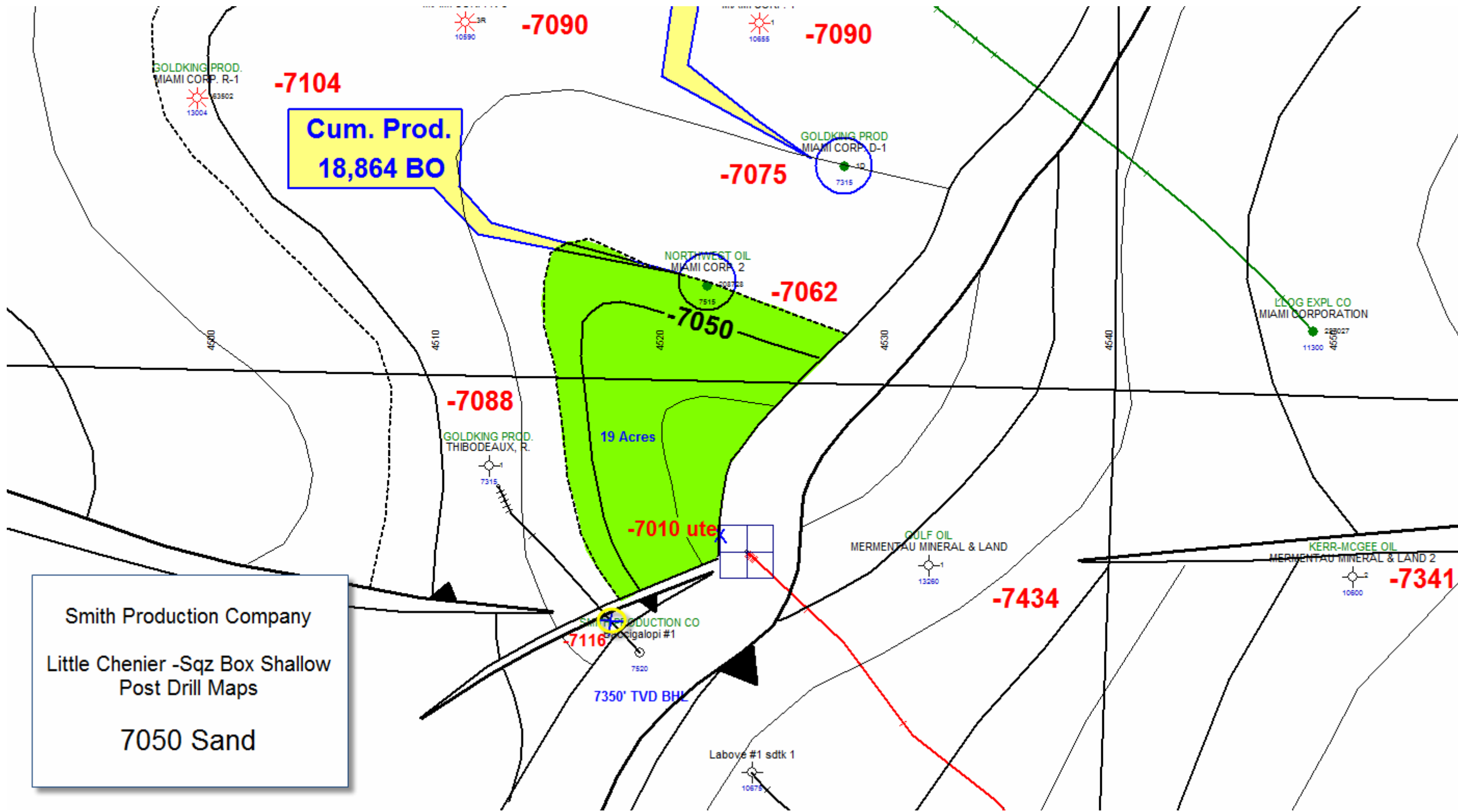


Smith
Baccigalopi #1
8-7-12
TVD

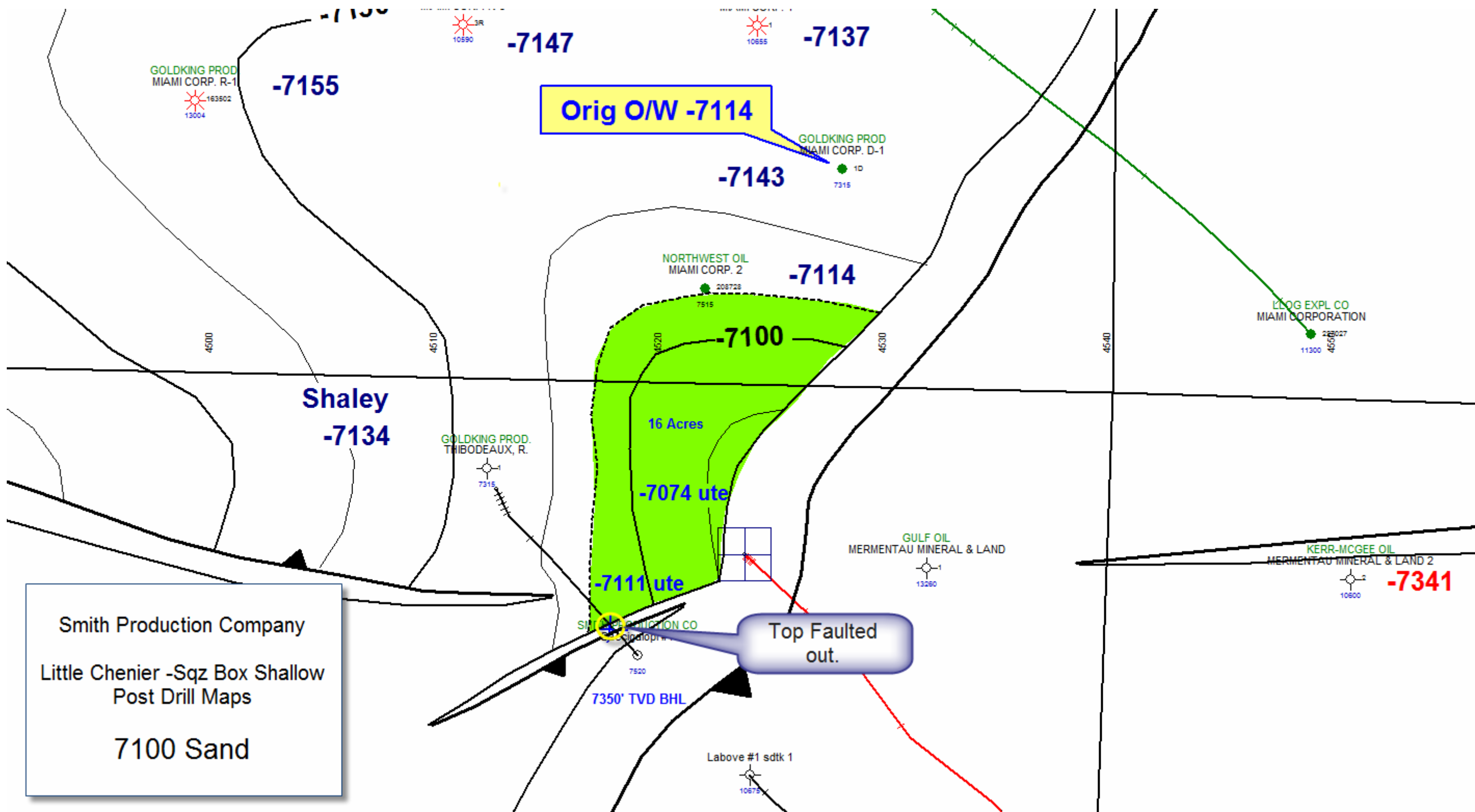




Smith Production Company
 Little Chenier -Sqz Box Shallow
 Post Drill Maps
 Amph B Sand



Smith Production Company
 Little Chenier -Sqz Box Shallow
 Post Drill Maps
 7050 Sand



Orig O/W -7114

GOLDKING PROD MIAMI CORP. D-1
7315

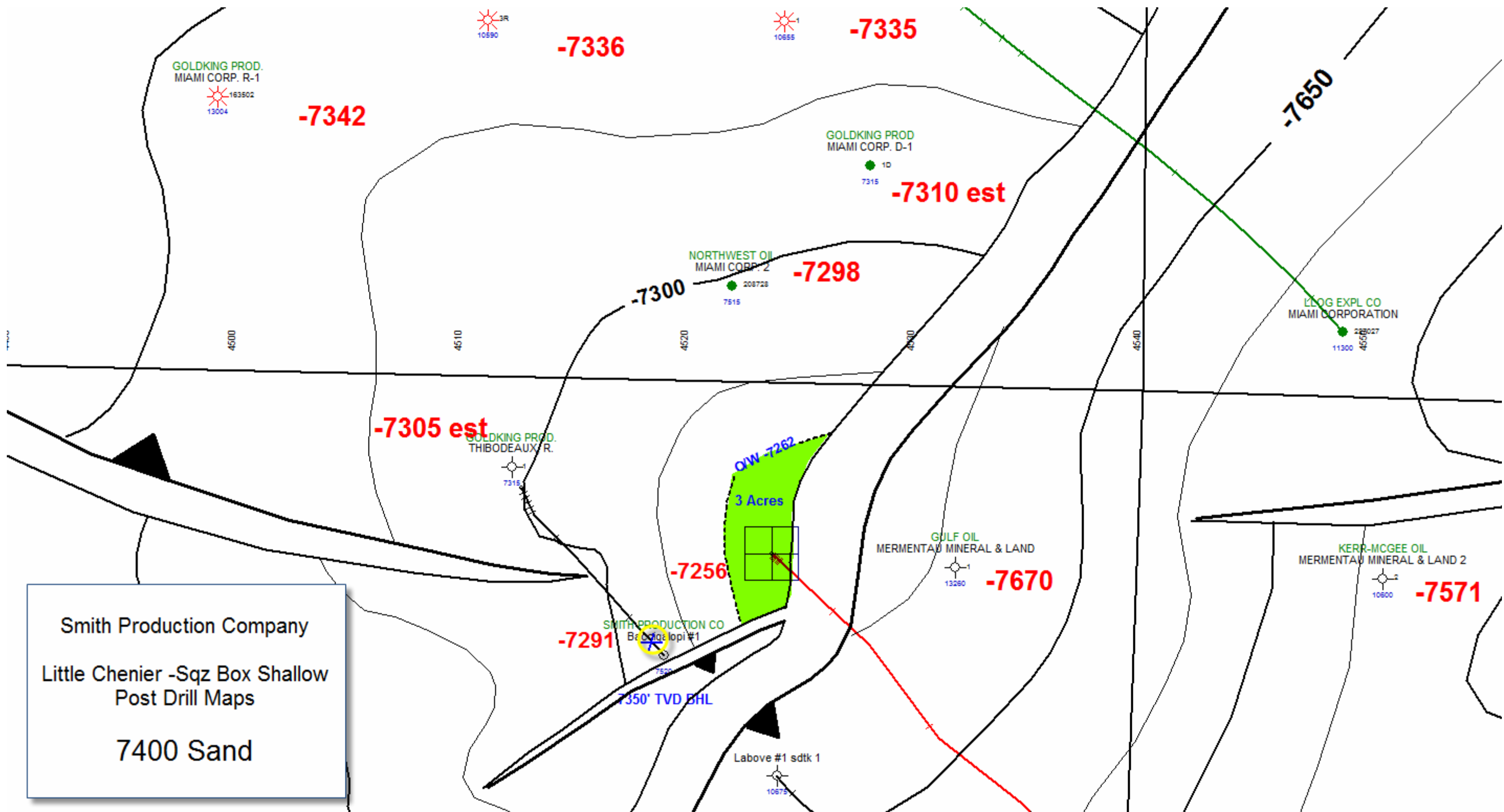
NORTHWEST OIL MIAMI CORP. 2
208728
7515

16 Acres
-7074 ute

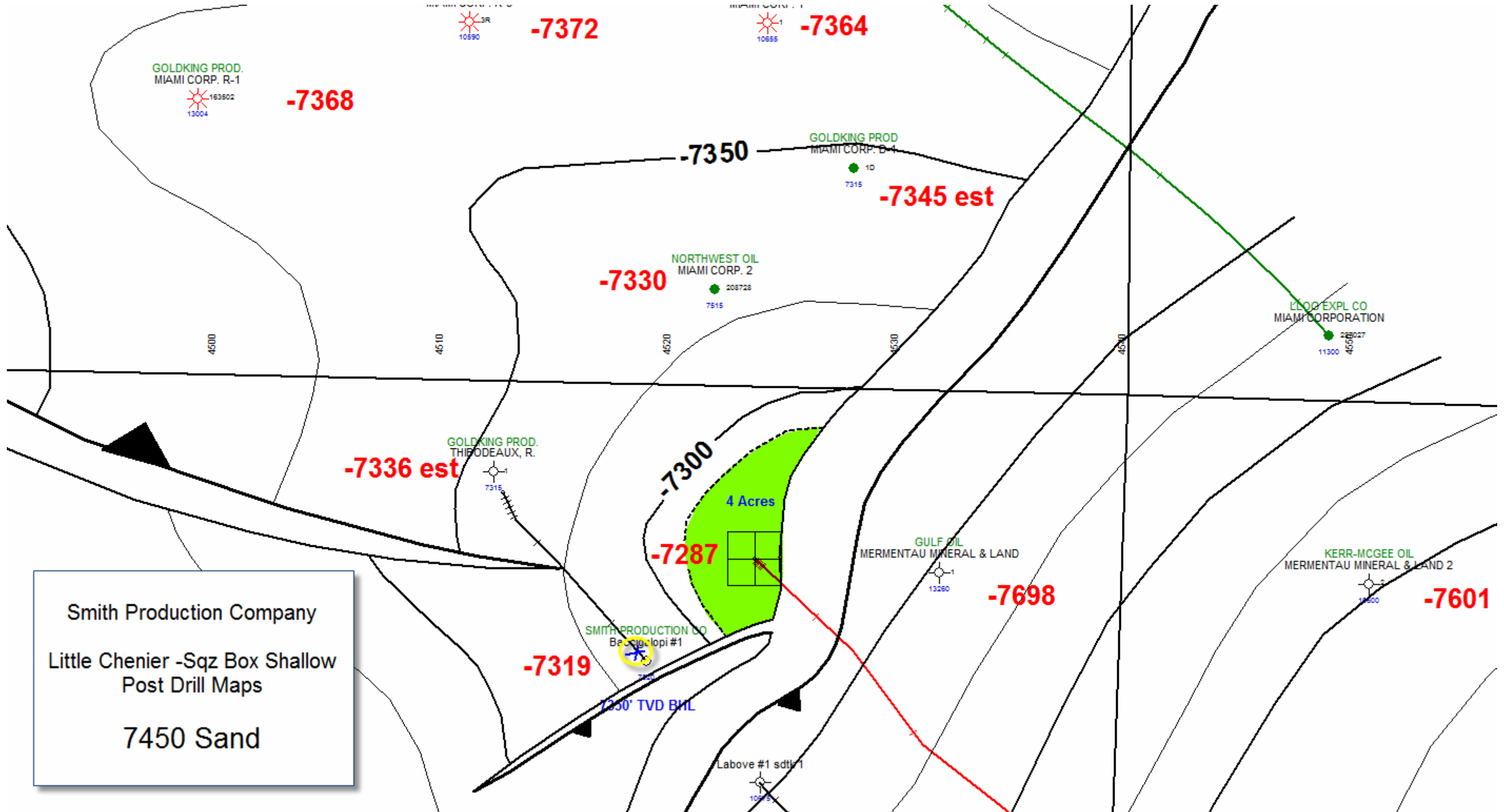
-7111 ute

Top Faulted out.

Smith Production Company
Little Chenier -Sqz Box Shallow
Post Drill Maps
7100 Sand



Smith Production Company
 Little Chenier -Sqz Box Shallow
 Post Drill Maps
 7400 Sand



Smith Production Company
 Little Chenier -Sqz Box Shallow
 Post Drill Maps
 7450 Sand

-7372

-7364

-7368

-7350

-7345 est

-7330

-7336 est

-7300

4 Acres

-7287

-7698

-7601

-7319

1250' TVD BHL

Labove #1 sdtl #1

GOLDKING PROD.
MIAMI CORP. R-1
163502
13004

3R
10590

1
10555

GOLDKING PROD
MIAMI CORP. B-4
10
7315

NORTHWEST OIL
MIAMI CORP. 2
208728
7515

LLOO EXPL CO
MIAMI CORPORATION
11300
455027

GOLDKING PROD.
THE ODEAUX, R.
7315

GULF OIL
MERMETAU MINERAL & LAND
1
13280

KERR-MCGEE OIL
MERMETAU MINERAL & LAND 2
5
17500

SMITH PRODUCTION CO
Basal Topi #1
725