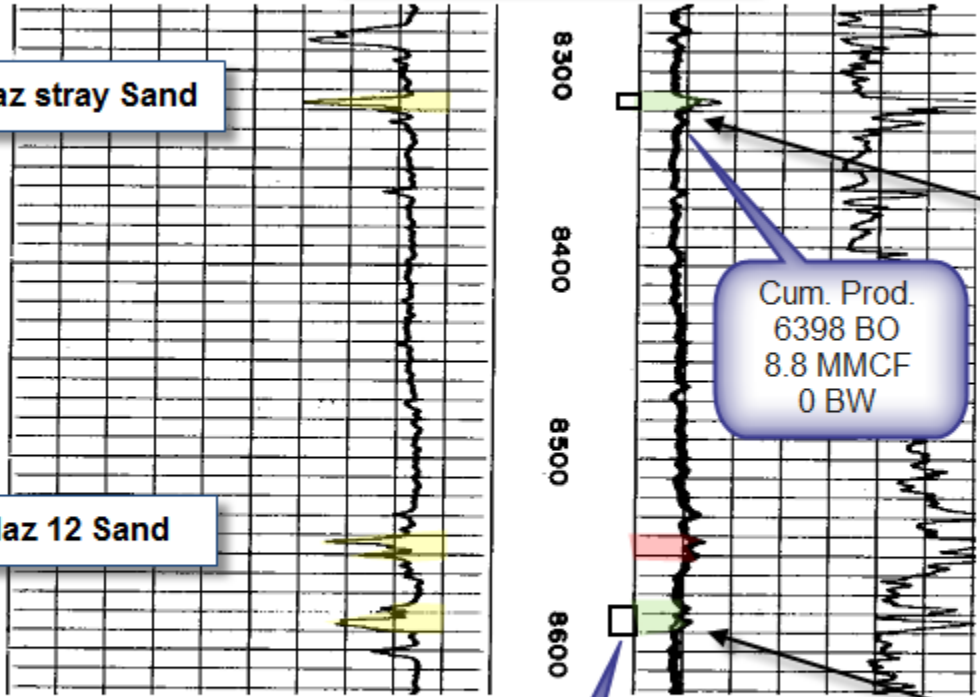


Texaco,  
Nickerson #23  
7-26-71

Cib Haz stray Sand

Cib Haz 12 Sand



3-6-87  
P&A

11-22-71  
8314'-27'  
204 BOPD 315 MCFD  
1000# FTP 0 BWD  
Grav 49.8

Cum. Prod.  
6398 BO  
8.8 MMCF  
0 BW

8-13-71  
8576'-90'  
120 BOPD 369 MCFD  
1270# FTP 6 BWD  
Grav 38.6

Produced  
short time no  
cum. prod.  
found.