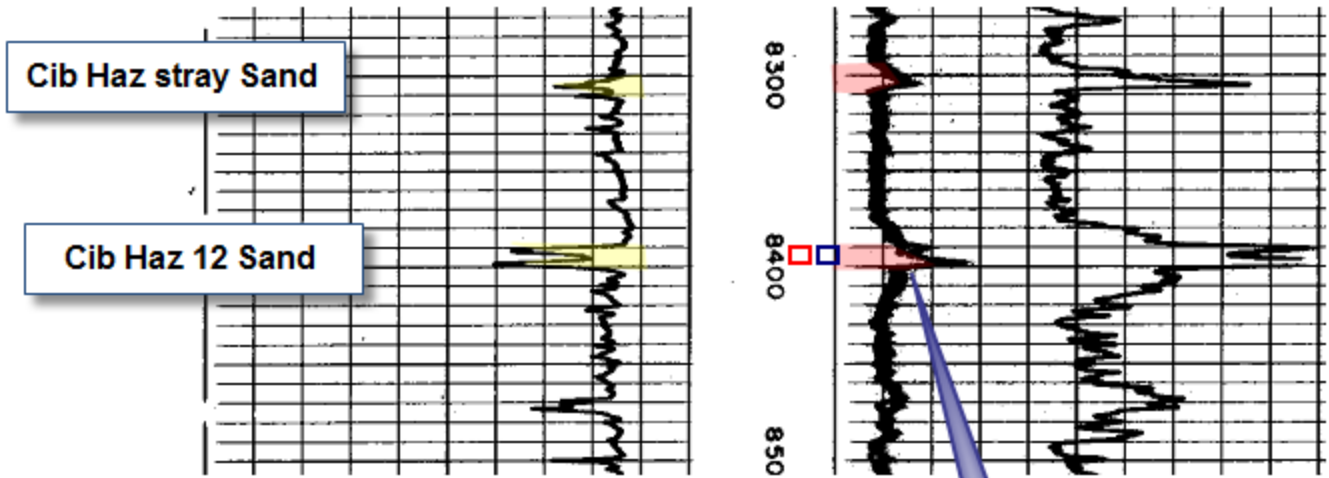


Texaco
Nickerson #24
10-13-71



Cib Haz stray Sand

Cib Haz 12 Sand

10-4-78
8387'-98'
18 BOPD 750 MCFD 0 BWD
2500# FTP Grav 55.0

10-21-71
8387'-98'
48 BOPD 2000 MCFD
3000# FTP Grav 57.6

3.83 BCF
43,012 BO
16,946 BW
Pressure depletion